



CITY OF NOVI CITY COUNCIL
APRIL 13, 2026

SUBJECT: Adoption of a Resolution to approve Amendment No. 7 to the Water Service Contract with the Great Lakes Water Authority to renew the contract.

SUBMITTING DEPARTMENT: Department of Public Works, Water & Sewer Division

KEY HIGHLIGHTS:

- Novi and the Great Lakes Water Authority have completed discussions related to Amendment No. 7 to the water service contract.
- Novi and GLWA have agreed to some operational adjustments that will result in a substantial reduction in revenue requirements.

BACKGROUND INFORMATION:

The City of Novi purchases their drinking water from the Great Lakes Water Authority (GLWA). GLWA member partner contracts are for 30 years and are on a 4-year review cycle to give opportunity to make any operational adjustments deemed appropriate. Following the review of Novi's water usage patterns, staff has determined that some adjustments to the contract are appropriate and will result in a reduction in revenue requirements (below table). The estimated reduction between \$800K to \$1M per year starts on July 1, 2027. The adjustments involve the reduction of the Maximum Day and Peak Hour values as reported in the attached administrative memo from April 2, 2026.

Amendment	Maximum Day Flow (MGD)	Peak Hour Flow (MGD)
Original Contract (2009)	18.6	34.5
Amendment No. 1 (2011)	16.8	24.5
Amendment No. 2 (2013)	17.5	28.0
Amendment No. 3 (2013)	17.9	28.6
Amendment No. 4 (2015)	19.0	19.0
Amendment No. 5 (2018)	17.0	19.0
Amendment No. 6 (2022)	17.0	19.0
Amendment No. 7 (2026) (currently proposed amendment)	15.3	16.5

MGD – Million Gallons Per Day

Amendment No. 7 to the Water Service Contract is also provided in the packet and has been reviewed by the City Attorney's office (Beth Saarela, March 19, 2026).

RECOMMENDED ACTION: Adoption of a Resolution to approve Amendment No. 7 to the Water Service Contract with the Great Lakes Water Authority to renew the contract.

CITY OF NOVI

COUNTY OF OAKLAND, MICHIGAN

RESOLUTION OF APPROVAL
AMENDMENT NO. 7 TO WATER SERVICE CONTRACT

Minutes of a Meeting of the City Council of the City of Novi, County of Oakland, Michigan, held in the City Hall of said City on April 13, 2026, at 7 o'clock P.M. Prevailing Eastern Time.

PRESENT: Councilmembers _____

ABSENT: Councilmembers _____

The following preamble and Resolution were offered by Councilmember _____ and supported by Councilmember _____.

WHEREAS Great Lakes Water Authority (GLWA) owns and operates a public water supply system that supplies potable water to the City of Novi; and,

WHEREAS on June 1, 2009, the City of Novi approved a Water Service Contract with the City of Detroit (which Detroit later assigned to GLWA) that reflects the terms and conditions governing the purchase and delivery of potable water to the City of Novi by GLWA; and,

WHEREAS the Water Service Contract has been amended by approval of the Novi City Council on November 22, 2010, January 7, 2013, and October 28, 2013, December 21, 2015, August 27, 2018; July 11, 2022 and,

WHEREAS GLWA has established a "reopener" schedule to review the Water Service Agreement on a four-year cycle to provide an opportunity for a periodic adjustment in the City of Novi's contract values to reflect the City's recent trends in water usage;

WHEREAS the Water Service Contract provides a means for all customers to have a long-term supply of potable water that meets or exceeds State of Michigan and federal regulatory requirements for drinking water quality and safety, and at the lowest reasonable rates; and,

WHEREAS proposed Amendment No. 7 to the Water Service Contract reviews three primary parameters (annual volume, maximum day usage, and peak hour usage) to reflect an accurate estimate of actual usage and flow rates; and,

WHEREAS Article 5, Section 5.07 of the Contract provides for periodic amendments to annual volume, maximum day usage, and peak hour usage values assigned to the City based on updated water usage data; and,

WHEREAS the Parties seek to amend the Contract by mutual agreement pursuant to Section 5.07 of the Water Service Contract.

NOW, THEREFORE, IT IS THEREFORE RESOLVED that the City Council and the City of Novi requests that the terms of the Water Service Contract with GLWA defines and includes Amendment No. 7.

AYES:

NAYES:

RESOLUTION DECLARED ADOPTED.

Cortney Hanson, City Clerk

CERTIFICATION

I hereby certify that the foregoing is a true and complete copy of a resolution adopted by the City Council of the City of Novi, County of Oakland, and State of Michigan, at a regular meeting held this 13th day of April, 2026, and that public office of said meeting was given pursuant to and in full compliance with Act No. 267, Public Acts of Michigan, 1976, and that the minutes of said meeting have been kept and made available to the public as required by said Act.

Cortney Hanson, City Clerk
City of Novi

MEMORANDUM



TO: VICTOR CARDENAS, CITY MANAGER
FROM: JEFFREY HERCZEG, DIRECTOR OF PUBLIC WORKS
SUBJECT: GLWA CONTRACT AMENDMENT
DATE: APRIL 2, 2026

In June 2009, Novi entered a 30-year contract with the Great Lakes Water Authority (GLWA), then the Detroit Water and Sewerage Department, for wholesale purchase of drinking water. GLWA assumed control in 2016 and scheduled all wholesale customers to a 4-year review cycle for water service contracts. This allows opportunity for member partners to make any operational adjustments deemed appropriate and acceptable by GLWA.

Following construction of the West Park Storage Facility, Novi was able to reduce its Peak Hour and Maximum Day volumes (which are drivers in rate methodology) and saw an immediate reduction in rates and revenue requirement. The Max Day value refers to the amount of daily water usage permitted per the GLWA contract and Peak Hour value refers to the maximum allowed rate of flow over a specific one-hour period (selected by GLWA in peak summer season).

Since 2015, negotiated values have remained constant based on historical data and the expectation of steady volume increases from development. However, staff have continued to refine the use of our water storage with advances in system monitoring technology, and improved operational efficiencies. Additionally, the anticipated volumes from development have not been as impactful and/or are offset by low-flow fixtures. Public awareness about irrigation and best practices for water use are now the norm and regional demand is down across the board.

Novi Data Summary

A Fiscal Year Ending ¹	B Charge Volume (MCF) ²	C Annual Billed Volume (MCF)	D Base Months Volume (MCF)	E Peak Months Volume (MCF)	F <i>Highest Demonstrated (MGD)</i>		G
					Max Day	Peak Hour	
2016	-	304,312	112,547	191,764	13.1	16.4	
2017	263,000	314,145	112,698	201,446	13.3	18.0	
2018	273,900	307,280	111,221	196,060	14.7	17.0	
2019	294,700	286,696	114,259	172,437	12.6	15.6	
2020	303,700	295,764	105,209	190,554	14.0	14.5	
2021	295,500	312,279	110,276	202,003	11.3	13.5	
2022	292,400	299,416	116,868	182,548	12.8	14.9	
2023	292,600	319,821	114,775	205,046	11.9	14.4	
2024	303,800	291,204	115,147	176,057	10.9	14.9	
2025	298,600	280,575	105,387	175,188	9.5	14.6	

Based on the historical values above, the approach to setting Max Day and Peak Hour contract values has been very conservative to avoid overages and incurring other costs or penalties just for a minor reduction in rates. However, the 10-year data used to calculate the reduction is directly from GLWA, who supports the proposed amendment summarized in the table below.

Historical Contract Values and Proposed Amendment

Amendment	Maximum Day Flow (MGD)	Peak Hour Flow (MGD)
Original Contract (2009)	18.6	34.5
Amendment No. 1 (2011)	16.8	24.5
Amendment No. 2 (2013)	17.5	28.0
Amendment No. 3 (2013)	17.9	28.6
Amendment No. 4 (2015)	19.0	19.0
Amendment No. 5 (2018)	17.0	19.0
Amendment No. 6 (2022)	17.0	19.0
Amendment No. 7 (2026) (currently proposed amendment)	15.3	16.5

MGD – Million Gallons Per Day

Staff will bring forward the **Contract Amendment to the City Council Meeting on April 13, 2026**, for City Council consideration. The rate adjustment takes **effect July 1, 2027** (FY 27-28) and is anticipated to be a significant reduction in revenue requirements for the City. Since the actual reduction is based on all the other member contract negotiations (which will be completed by fall 2026) and their impact on GLWA revenue, staff can only estimate the reduction amount to be between **\$800K - \$1M per year**.

ELIZABETH KUDLA SAARELA
esaarela@rsjalaw.com

27555 Executive Drive, Suite 250
Farmington Hills, Michigan 48331
P 248.489.4100 | F 248.489.1726
www.rsjalaw.com



ROSATI | SCHULTZ
JOPPICH | AMTSBUECHLER

March 19, 2026

Ben Croy, City Engineer
City of Novi
Field Services Complex
26300 Lee BeGole Drive
Novi, MI 48375

Re: *Amendment No. 7 to Water Service Agreement between Great Lakes Water Authority and City of Novi and Resolution of Approval*

Dear Mr. Croy:

We have received and reviewed Amendment No. 7 to Water Service Agreement between Great Lakes Water Authority and City of Farmington and the corresponding Resolution of Approval. The Amendment is for the purpose of updating the City's service area, distribution points, emergency connections to other communities, meter pit locations, annual volume requirements, pressure ranges, maximum flow rate, and split assumptions. These terms and conditions of the Agreement are set forth in Exhibits A and B to the Agreement and are reviewed and updated every 4 years to ensure that they are accurate and that the City's flow rate and volume requirements are consistent with recent historical use data. Except for the updates to the Exhibits, no other terms of the contract are changing. Subject to your review and approval of the Exhibits, we see no legal impediment to approval of Amendment No. 7.

Please feel free to contact me with any questions or concerns regarding this matter.

Very truly yours,

ROSATI SCHULTZ JOPPICH
& AMTSBUECHLER PC

Elizabeth Kudla Saarela

EKS

C: Cortney Hanson, Clerk
Jeff Herczeg, DPW Director
Thomas R. Schultz, Esquire

**AMENDMENT NO. 7 TO WATER SERVICE CONTRACT
BETWEEN
GREAT LAKES WATER AUTHORITY
AND
CITY OF NOVI**

This Amendment No. 7 (“Amendment”) is made between the Great Lakes Water Authority, a municipal authority and public body corporate (“GLWA”), and the City of Novi, a municipal corporation (“Member Partner”). GLWA and Member Partner are collectively referred to as the “Parties”.

RECITALS

- A. GLWA leases, operates, and maintains the public water supply system owned by the City of Detroit (“System”); and
- B. On July 21, 2009, the Parties entered a Water Service Contract (“Contract”) reflecting the terms and conditions governing the delivery and purchase of potable water, as subsequently amended and assigned; and
- C. The Contract provides for periodic reopening on a four-year schedule, of which the Parties wish to avail themselves; and
- D. Article 15 of the Contract permits the Parties to amend the Contract by mutual agreement; and
- E. In consideration of the mutual undertakings of the Parties and for the benefit of the public, it is the mutual desire of the Parties to enter this Amendment to amend the Contract as set forth in detail in the following sections.

ACCORDINGLY, THE PARTIES AGREE AS FOLLOWS:

- 1. Exhibit A of the Contract is amended by deleting in its entirety the existing Exhibit A and substituting the attached Exhibit A in its place.
- 2. Exhibit B of the Contract is amended by deleting in its entirety the existing Exhibit B and substituting the attached Exhibit B in its place.
- 3. Except for the provisions of the Contract specifically contained in this Amendment, all other terms, conditions, and covenants contained in the Contract shall remain in full force and effect and as set forth in the Contract.
- 4. This Amendment to the Contract shall be effective and binding upon the Parties when it is signed and acknowledged by the duly authorized representatives of both Parties and is approved by Member Partner’s governing body and the GLWA Board of Directors.

(Signatures appear on next page)

Accordingly, GLWA and Member Partner, by and through their duly authorized officers and representatives, have executed this Amendment.

City of Novi:

By: _____
Justin Fischer
Mayor

By: _____
Cortney Hanson
City Clerk

APPROVED BY
NOVI CITY COUNCIL ON: _____
Date

Great Lakes Water Authority:

By: _____
Suzanne R. Coffey, P.E.
Chief Executive Officer

Dated: _____

APPROVED BY
GLWA BOARD OF DIRECTORS ON: _____
Date

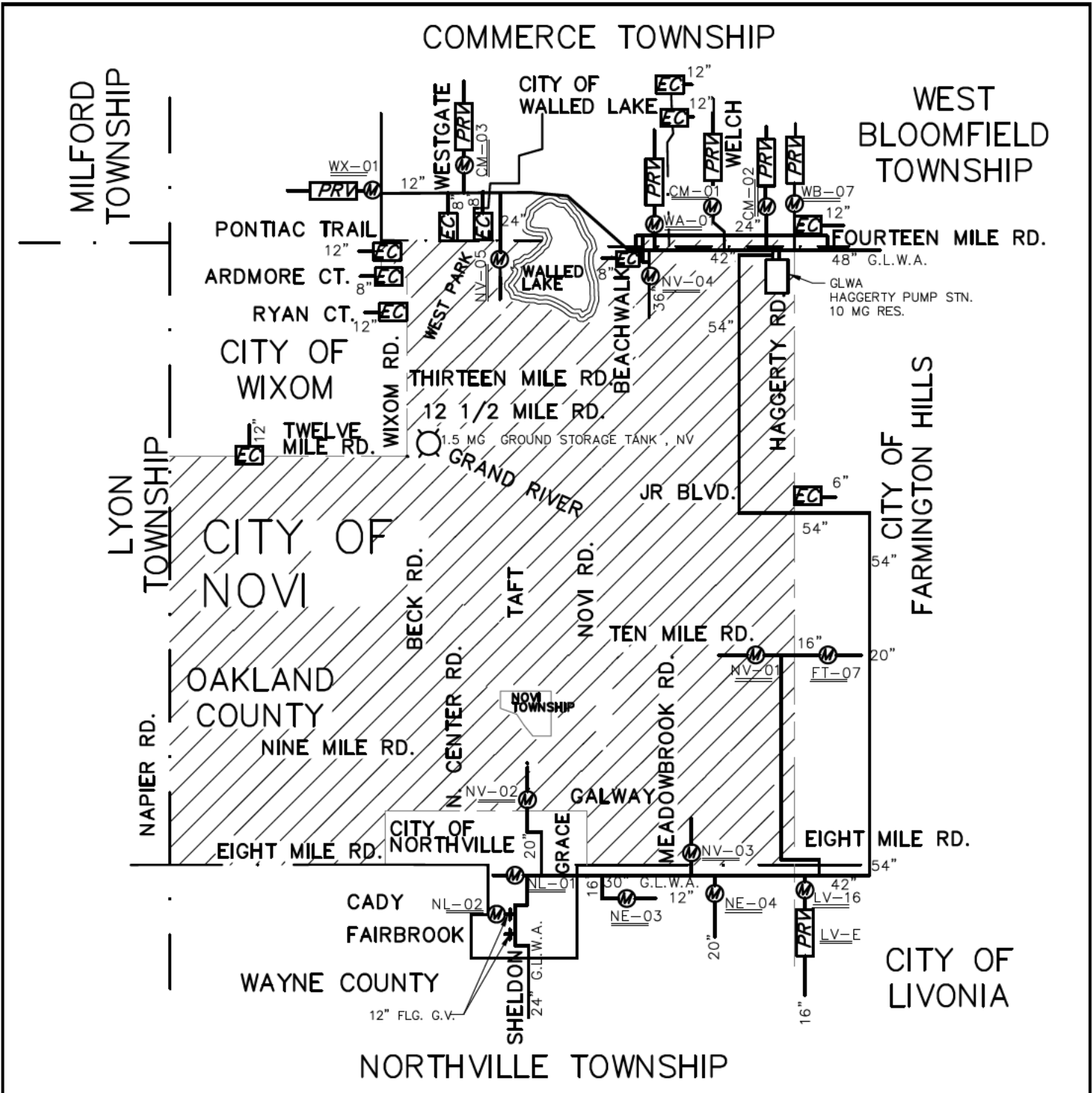
APPROVED AS TO FORM BY
GLWA GENERAL COUNSEL ON: _____
Signature/Date

EXHIBIT A

Customer's Water Distribution Points

This Exhibit contains the following information:

1. The corporate limits of Customer;
2. The agreed upon water Service Area of Customer which (a) may or may not be entirely within the corporate limits of Customer and (b) which may or may not include the entire area within the Customer's corporate limits;
3. The specific location of the Water Distribution Points, including any Board approved emergency connections;
4. The designation of appurtenances to be maintained by Customer and those to be maintained by the Board; and
5. A list of any closed meter locations.



LEGEND

SYMBOL	DESCRIPTION	SYMBOL	DESCRIPTION
	GLWA METER PIT		SERVICE AREA
	PRV		CITY-TWP LINE
	EMERGENCY CONNECTION		CITY OR TWP. LINE
	GROUND STORAGE TANK		



EXHIBIT-A SERVICE AREA LOCATION MAP
CITY OF NOVI

EXHIBIT A

City of Novi Emergency Connections:

Connection to Farmington Hills

6" GV&W at the intersection of Haggerty Road and JR Blvd

Connection to Walled Lake

8" GV&W at the intersection of Fourteen Mile Road and Beachwalk Drive

8" GV&W at the Windward Bay condominiums

8" GV&W at Pontiac Trail west of West Park Drive

Connection to Wixom

8" GV&W at the intersection of Beck Road and Ardmore Court

12" GV&W on Beck Road at Shoppes at The Trail

12" GV&W on Twelve Mile Road near Pinewood

12" GV&W on Ryan Court west of Hudson Drive

Connection to GLWA

16" GV&W at the intersection of Fourteen Mile Road and Decker between the GLWA

42" main and the Novi 16" main. Valve to operated only by GLWA staff.

City of Novi Water Customers Outside Municipal Limits:

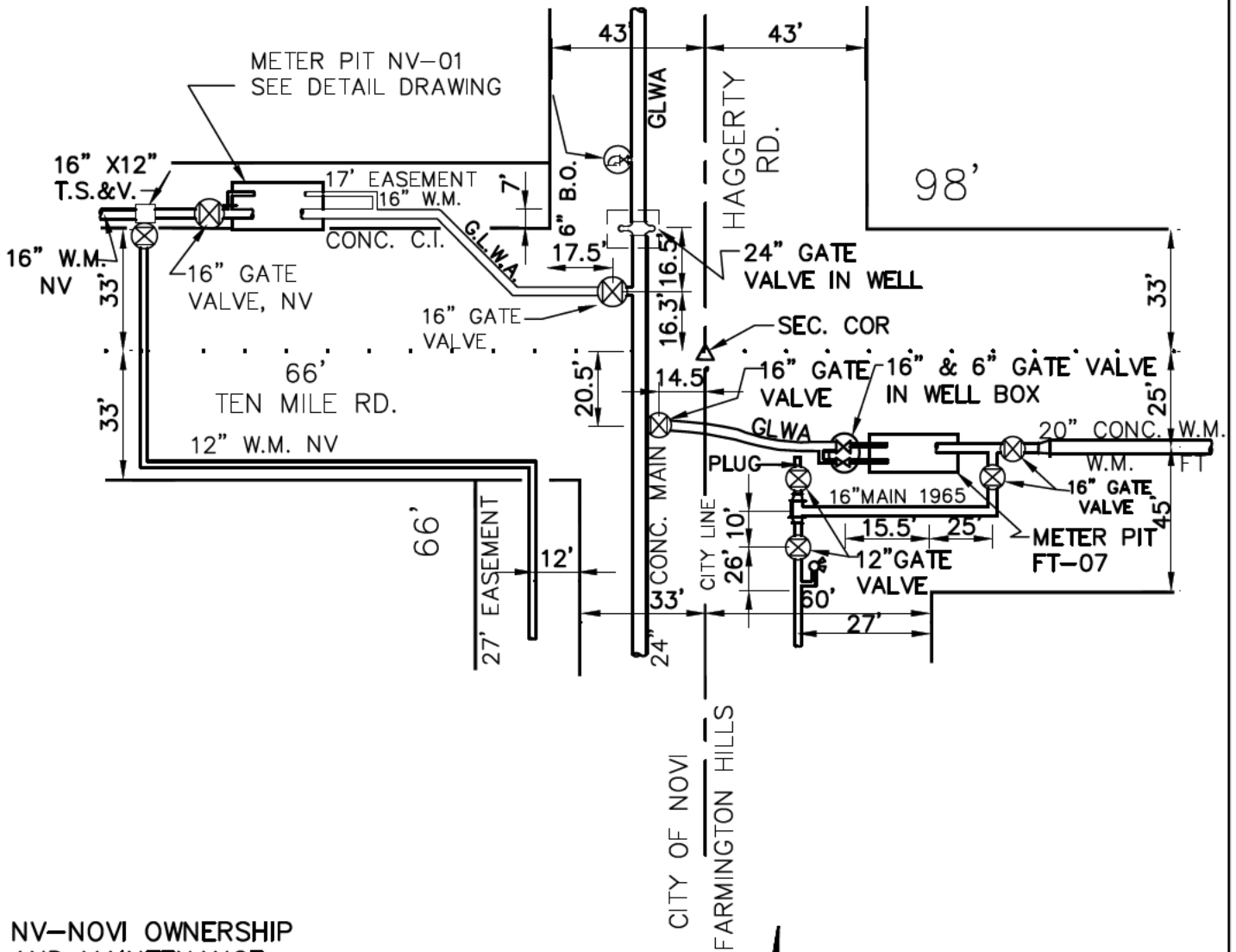
48385 Eight Mile Rd. Northville Twp.

48900 West 12 Mile Road Wixom

City of Novi Master Meters Not In Service:

None.

EXHIBIT-A NV-01 TEN MILE RD. AND HAGGERTY CITY OF NOVI



NV-NOVI OWNERSHIP
AND MAINTENANCE

FT-FARMINGTON HILLS
OWNERSHIP AND MAINTENANCE

GLWA- GREAT LAKES WATER AUTHORITY
OPERATION AND MAINTENANCE
(CITY OF DETROIT OWNERSHIP)

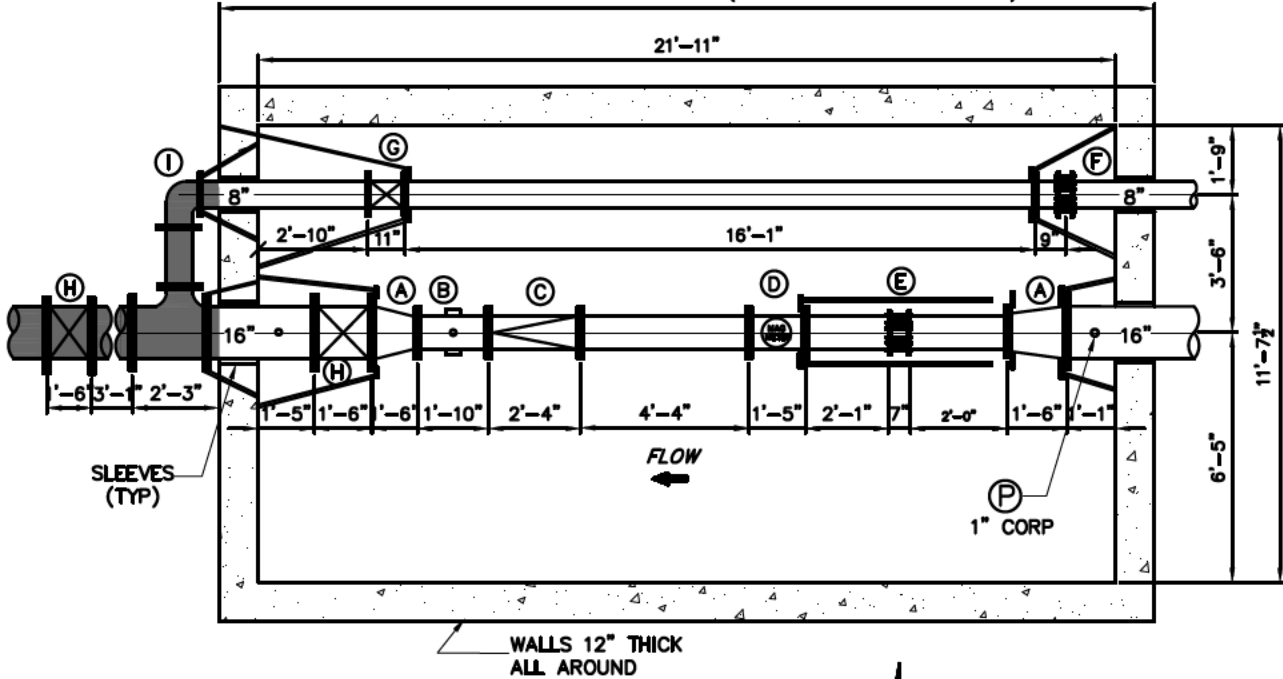
LOCATIONS SUBJECT TO
VERIFICATION IN THE FIELD.

SITE PLAN
NOT TO SCALE



EXHIBIT-A NV-01 TEN MILE RD. AND HAGGERTY CITY OF NOVI

GLWA OPERATION AND MAINTENANCE (CITY OF DETROIT OWNERSHIP)



CITY OF NOVI O&M

METER PIT DETAIL NOT TO SCALE



LEGEND			
TAG	QTY	DESCRIPTION	SIZE
A	2	CONCENTRIC REDUCERS, D.I.	16"X10"
B	1	DUCTILE IRON TEE	10"X3"
C	1	CHECK VALVE	10"
D	1	ABB MAG METER	10"
E	1	DRESSER STYLE 38 COUPLING	10"
F	1	DRESSER STYLE 38 COUPLING	8"
G	1	GATE VALVE	8"
H	2	GATE VALVE	16"
I	1	90° ELBOW	8"

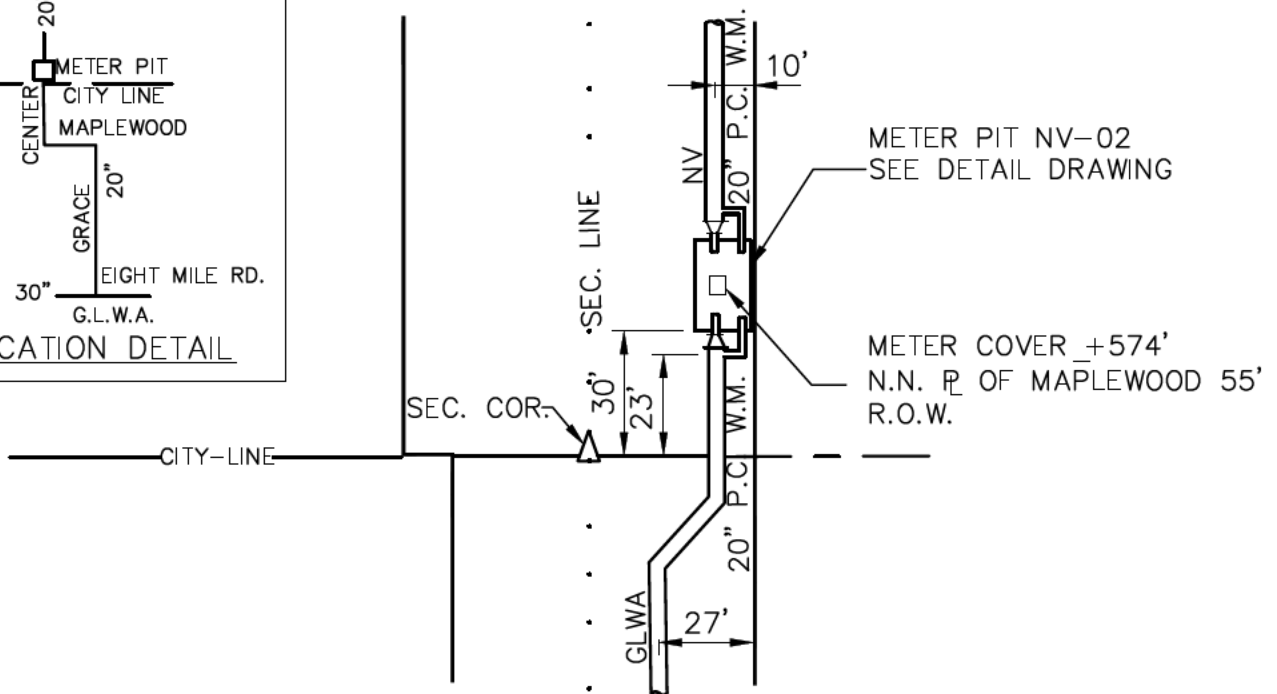
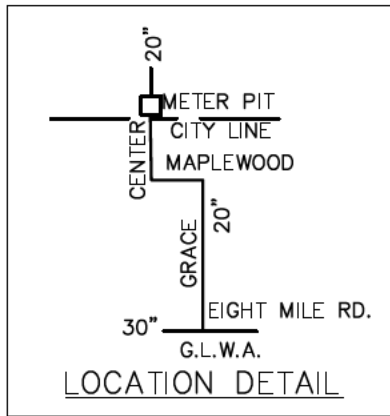
TYPICAL PRESSURE LOSS THRU METER	
METER TYPE	P.S.I. LOSS
VENTURI	1 - 2
MAG	0
TURBINE	4 - 6

(P) - UPSTREAM PRESSURE TRANSMITTER,
G.L.W.A. OPERATION & MAINTENANCE
(CITY OF DETROIT OWNERSHIP)

ADDRESS _____ 24200 HAGGERTY ROAD
 FEED TO _____ CITY OF NOVI
 FEED FROM _____ G.L.W.A. TRANS. MAIN
 TYPE OF METER _____ ABB MAG METER
 SIZE OF METER _____ 10"
 METER NUMBER _____ 3K6200067703
 DATE METER SET _____ DECEMBER 8, 2012
 METER PIT CONST & SIZE _____ REINFORCED CONCRETE 21'-11" X 11'-7.5" I.D.
 GATE BOOK No _____ W-1401
 REMARKS _____ NONE



EXHIBIT-A NV-02 NORTH CENTER STREET CITY OF NOVI



SITE PLAN
NOT TO SCALE



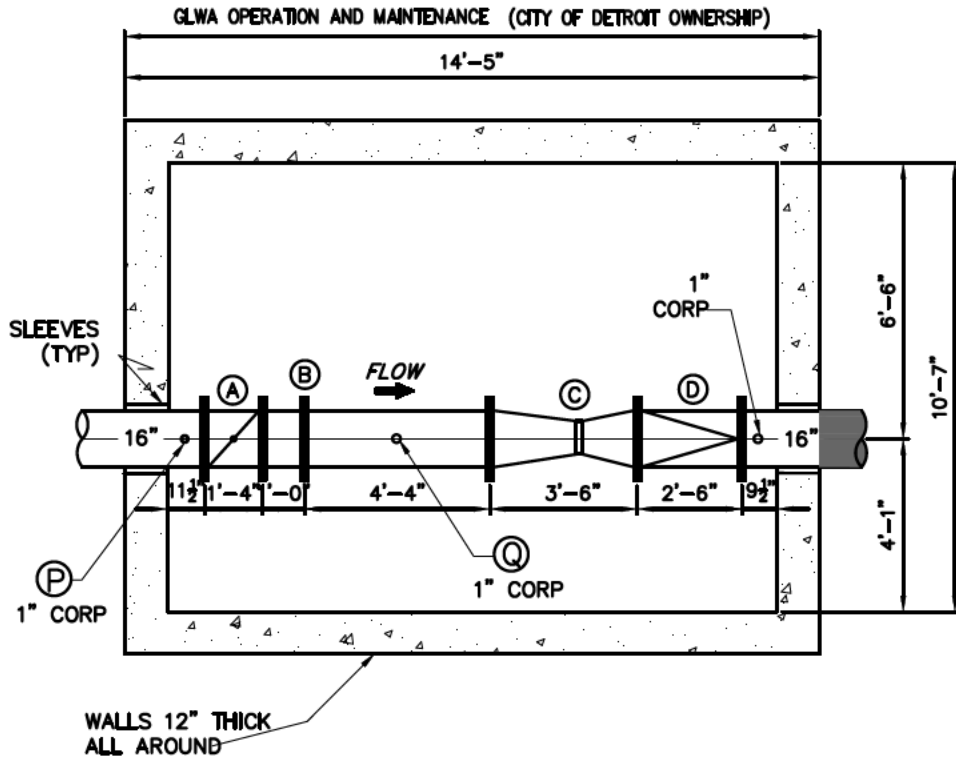
**NV-NOVI OWNERSHIP
AND MAINTENANCE**

**GLWA- GREAT LAKES WATER AUTHORITY
OPERATION AND MAINTENANCE
(CITY OF DETROIT OWNERSHIP)**

**LOCATIONS SUBJECT TO
VERIFICATION IN THE FIELD.**



EXHIBIT-A NV-02 NORTH CENTER STREET CITY OF NOVI



METER PIT DETAIL

NOT TO SCALE



█ CITY OF NOVI O&M

LEGEND			
TAG	QTY	DESCRIPTION	SIZE
A	3	GATE VALVE	12"
B	2	FXF DUCTILE IRON CONCENTRIC REDUCER	12"x10"
C	1	TEST TEE ASSEMBLY	3"
D	1	SENSUS FIRELINE METER W/ STRAINER & 2" BY-PASS	10"
E	1	DUCTILE IRON SPOOL PIECE	10"
F	1	DRESSER STYLE 128 FLANGE ADAPTER	10"

TYPICAL PRESSURE LOSS THRU METER	
METER TYPE	P.S.I. LOSS
VENTURI	1 - 2
MAG	0
TURBINE	4 - 6

Ⓟ - UPSTREAM PRESSURE TRANSMITTER,
G.L.W.A. OPERATION & MAINTENANCE
(CITY OF DETROIT OWNERSHIP)

Ⓠ - DOWNSTREAM PRESSURE TRANSMITTER,
G.L.W.A. OPERATION & MAINTENANCE
(CITY OF DETROIT OWNERSHIP)

ADDRESS _____ 21602 CENTER
 FEED TO _____ CITY OF NOVI
 FEED FROM _____ G.L.W.A. 20" TRANS. MAIN
 TYPE OF METER _____ SENSUS TURBO
 SIZE OF METER _____ 10" X 2"
 METER NUMBER _____ 10")1508467 & 2")1482108
 DATE METER SET _____ 4/11/1997
 METER PIT CONST & SIZE _____ REINFORCED CONCRETE 18'-0" X 9'-0" I.D.
 GATE BOOK No _____ NONE
 REMARKS _____ NONE

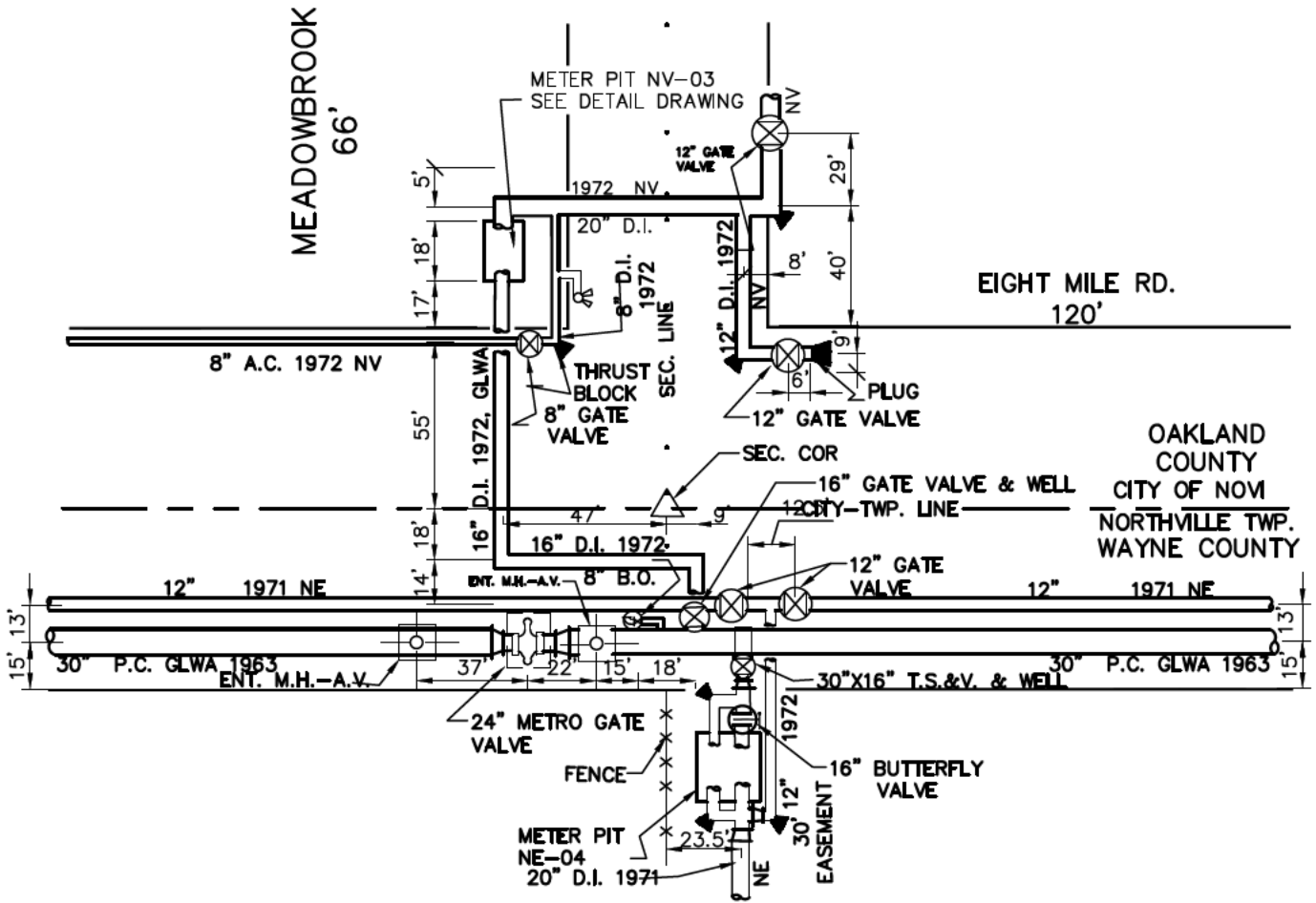


EXHIBIT-A

NV-03

EIGHT MILE AND MEADOWBROOK

CITY OF NOVI



NV- NOVI OWNERSHIP
AND MAINTENANCE

NE- NORTHVILLE TWP. OWNERSHIP
AND MAINTENANCE

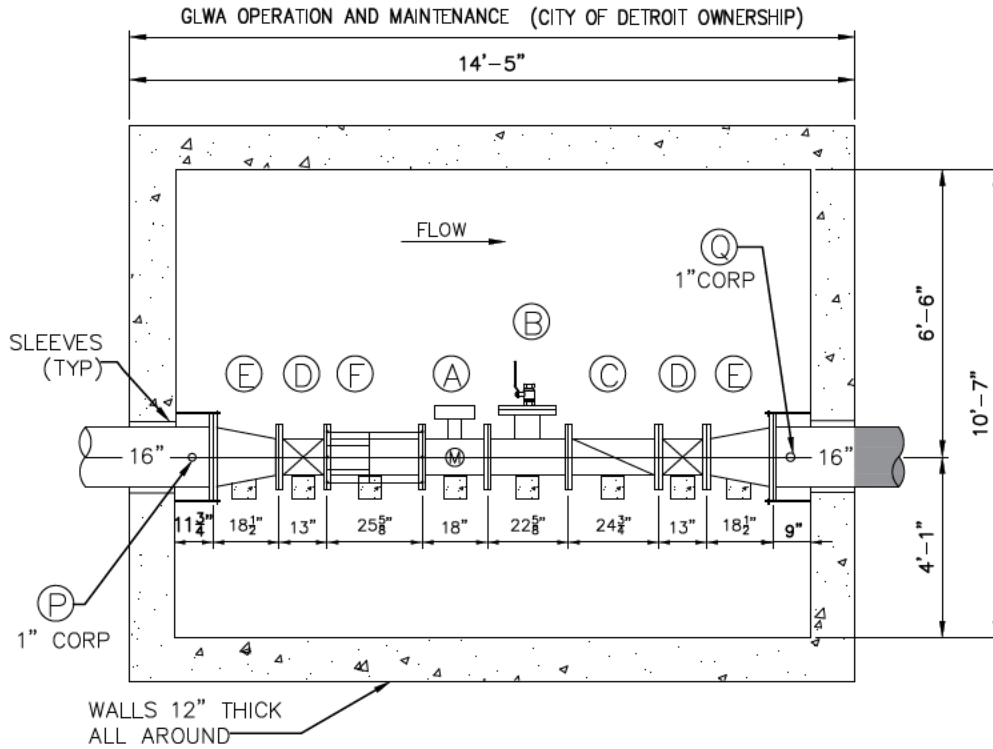
GLWA- GREAT LAKES WATER AUTHORITY
OPERATION AND MAINTENANCE
(CITY OF DETROIT OWNERSHIP)

LOCATIONS SUBJECT TO
VERIFICATION IN THE FIELD.

SITE PLAN
NOT TO SCALE



EXHIBIT-A NV-03 EIGHT MILE AND MEADOWBROOK CITY OF NOVI



METER PIT DETAIL
NOT TO SCALE

LEGEND			
TAG	QTY	DESCRIPTION	SIZE
A	1	MAG METER	10"
B	1	TEST TEE	10" X 8"
C	1	CHECK VALVE	10"
D	2	GATE VALVE	10"
E	2	REDUCERS	16" X 10"
F	1	RFCA	10"

CITY OF NOVI O&M

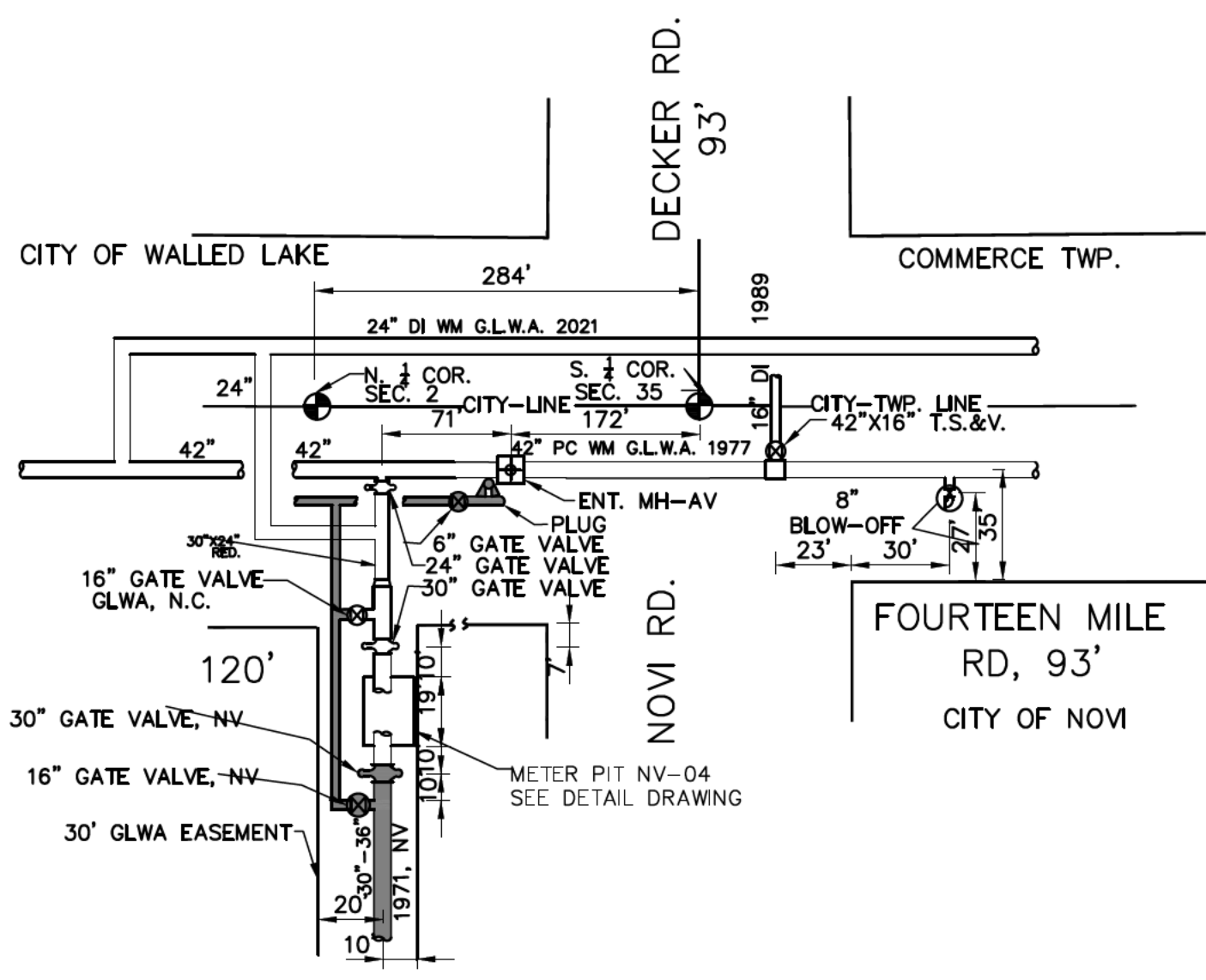
-UPSTREAM PRESSURE TRANSMITTER,
G.L.W.A. OPERATION & MAINTENANCE
(CITY OF DETROIT OWNERSHIP)

-DOWNSTREAM PRESSURE TRANSMITTER,
G.L.W.A. OPERATION & MAINTENANCE
(CITY OF DETROIT OWNERSHIP)

ADDRESS _____ 20707 MEADOWBROOK
 FEED TO _____ CITY OF NOVI
 FEED FROM _____ 30" G.L.W.A. TRANS. MAIN
 TYPE OF METER _____ SIEMENS MAG5100W
 SIZE OF METER _____ 10"
 METER NUMBER _____ PBD-L9064513
 DATE METER SET _____ 11/17/2019
 METER PIT CONST & SIZE _____ REINFORCED CONCRETE 14'-5" X 10'-7" I.D.
 GATE BOOK No _____ W-1375
 REMARKS _____ NONE



EXHIBIT-A NV-04 FOURTEEN MILE WEST OF DECKER RD. CITY OF NOVI



NV-NOVI OWNERSHIP
AND MAINTENANCE

SITE PLAN
NOT TO SCALE

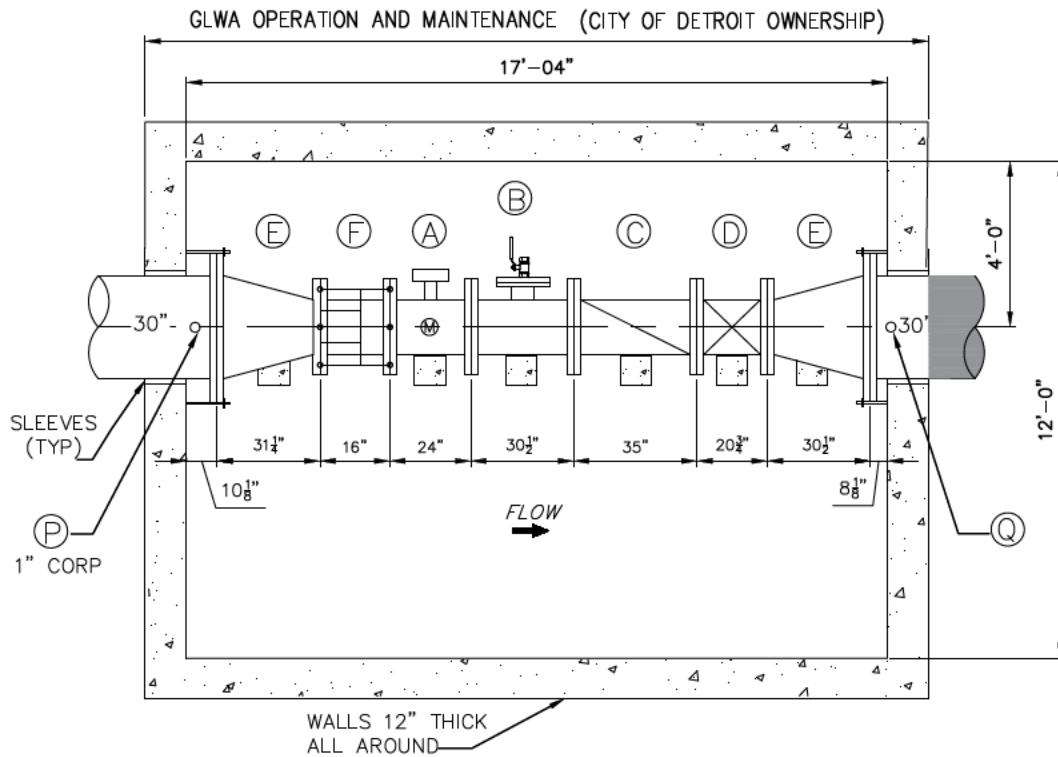


GLWA- GREAT LAKES WATER AUTHORITY
OPERATION AND MAINTENANCE
(CITY OF DETROIT OWNERSHIP)

LOCATIONS SUBJECT TO
VERIFICATION IN THE FIELD.



EXHIBIT-A NV-04 FOURTEEN MILE RD. WEST OF DECKER RD. CITY OF NOVI



METER PIT DETAIL
NOT TO SCALE

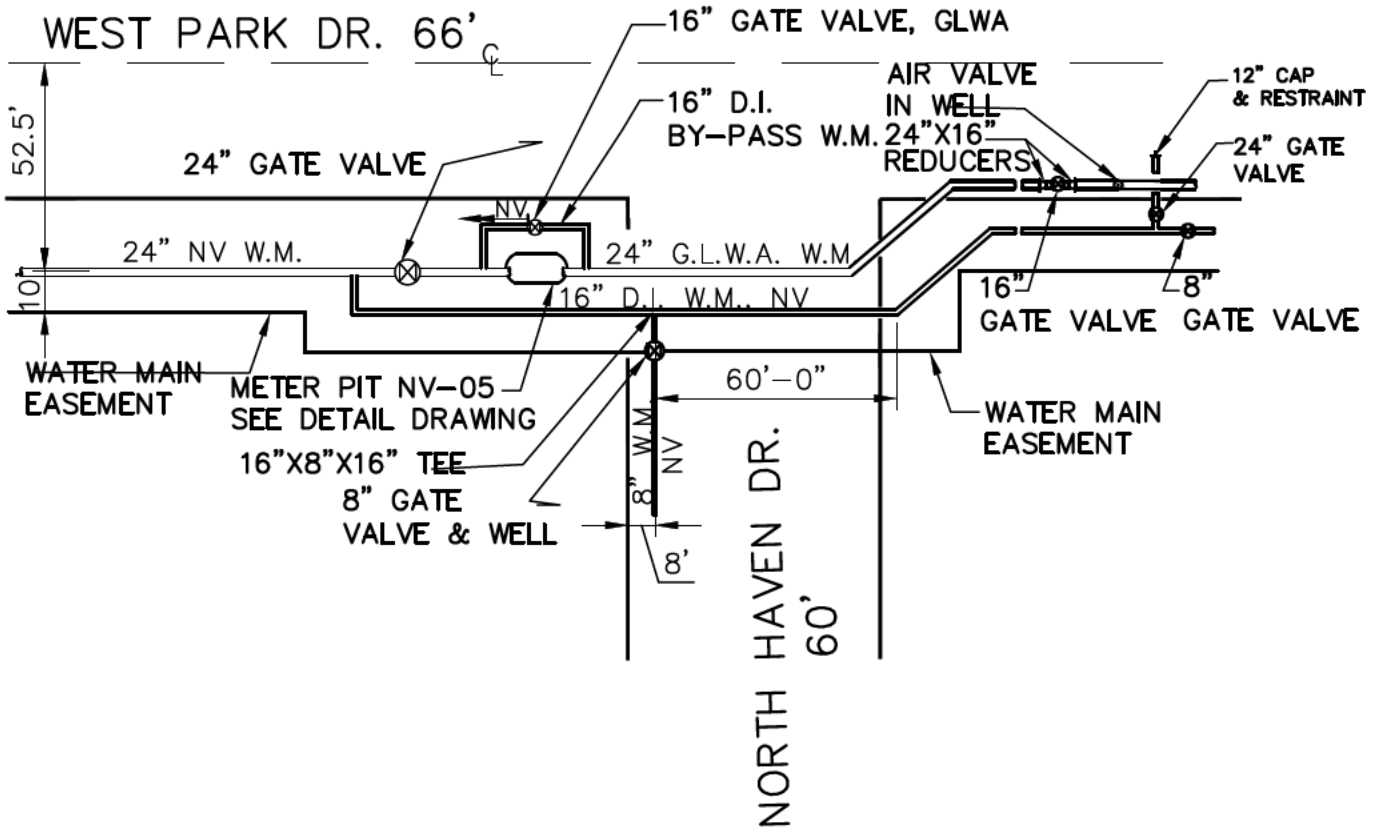
LEGEND			
TAG	QTY	DESCRIPTION	SIZE
A	1	MAG METER	16"
B	1	TEST TEE	16" X 8"
C	1	CHECK VALVE	16"
D	1	GATE VALVE	16"
E	2	REDUCERS	30" X 16"
F	1	RFCA	16"

- CITY OF NOVI O&M
- (P) - UPSTREAM PRESSURE TRANSMITTER, G.L.W.A. OPERATION & MAINTENANCE (CITY OF DETROIT OWNERSHIP)
- (Q) - DOWNSTREAM PRESSURE TRANSMITTER, G.L.W.A. OPERATION & MAINTENANCE (CITY OF DETROIT OWNERSHIP)

ADDRESS _____ 42351 FOURTEEN MILE RD.
 FEED TO _____ CITY OF NOVI
 FEED FROM _____ 42" G.L.W.A. MAIN
 TYPE OF METER _____ SIEMENS MAG5100W
 SIZE OF METER _____ 16"
 METER NUMBER _____ PBD-L0144507
 DATE METER SET _____ 02/20/2020
 METER PIT CONST & SIZE _____ REINFORCED CONCRETE 17' X 12' I.D.
 GATE BOOK No _____ N-517
 REMARKS _____ -



EXHIBIT-A NV-05 WEST PARK DR. AND NORTH HAVEN DR. CITY OF NOVI



NV-NOVI OWNERSHIP
AND MAINTENANCE

GLWA- GREAT LAKES WATER AUTHORITY
OPERATION AND MAINTENANCE
(CITY OF DETROIT OWNERSHIP)

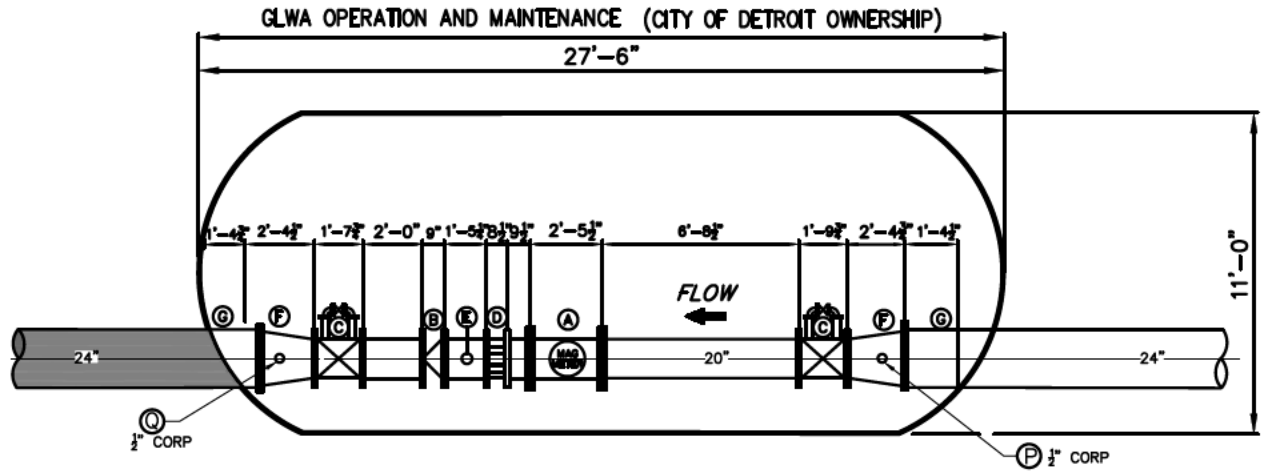
SITE PLAN
NOT TO SCALE



LOCATIONS SUBJECT TO
VERIFICATION IN THE FIELD.



EXHIBIT-A
 NV-05
 WEST PARK DR. AND NORTH HAVEN DR.
 CITY OF NOVI



METER PIT DETAIL
 NOT TO SCALE



LEGEND			
TAG	QTY	DESCRIPTION	SIZE
A	1	ABB MAG METER	20"
B	1	CHECK VALVE	20"
C	2	GATE VALVE	20"
D	1	MECHANICAL COUPLING	20"
E	1	TEST FITTING	16"
F	2	WELD IN REDUCER	24" X 20"
G	1	SLEEVE	10"

TYPICAL PRESSURE LOSS THRU METER	
METER TYPE	P.S.I. LOSS
VENTURI	1 - 2
MAG	0
TURBINE	4 - 6

Ⓟ - UPSTREAM PRESSURE TRANSMITTER,
 G.L.W.A. OPERATION & MAINTENANCE
 (CITY OF DETROIT OWNERSHIP)

Ⓠ - DOWNSTREAM PRESSURE TRANSMITTER,
 G.L.W.A. OPERATION & MAINTENANCE
 (CITY OF DETROIT OWNERSHIP)

ADDRESS _____
 FEED TO _____ CITY OF NOVI
 FEED FROM _____ 24" GLWA TRANSMISSION MAIN
 TYPE OF METER _____ ABB MAG
 SIZE OF METER _____ 20"
 METER PIT CONST & SIZE _____ STEEL VAULT 27'-6" X 11'-0" I.D.
 GATE BOOK No _____ -
 REMARKS _____ GLWA HAS ACCESS



EXHIBIT B

Projected Annual Volume and Minimum Annual Volume (Table 1)
Pressure Range and Maximum Flow Rate (Table 2)
Flow Split Assumptions (Table 3)
Addresses for Notice (Table 4)

Table 1 and Table 2 set forth the agreed upon Projected Annual Volumes, Minimum Annual Volumes, Pressure Ranges and Maximum Flow Rates for the term of this Contract provided that figures in bold type face are immediately enforceable pursuant to the terms of Section 5.07 and italicized figures are contained for planning purposes only but will become effective absent the negotiated replacements anticipated in Section 5.07.

The approximate rate of flow by individual meter set forth in Table 3 is the assumption upon which the Pressure Range commitments established in Table 2 have been devised. Should Customer deviate from these assumptions at any meter(s), the Board may be unable to meet the stated Pressure Range commitments in this Contract or in the contract of another customer of the Board and Section 5.08 of this Contract may be invoked.

EXHIBIT B

Table 1
 Projected Annual Volume and Minimum Annual Volume

Fiscal Year Ending June 30	Projected Annual Volume (Mcf)	Minimum Annual Volume (Mcf)
2010	325,000	162,500
2011	281,800	140,900
2012	281,800	140,900
2013	281,800	140,900
2014	303,000	151,500
2015	310,000	155,000
2016	311,000	155,500
2017	265,000	132,500
2018	265,000	132,500
2019	265,000	132,500
2020	315,000	157,500
2021	315,000	157,500
2022	315,000	157,500
2023	315,000	157,500
2024	315,000	157,500
2025	315,000	157,500
2026	315,000	157,500
2027	315,000	157,500
2028	315,000	157,500
2029	315,000	157,500
2030	315,000	157,500
2031	315,000	157,500
2032	<i>315,000</i>	<i>157,500</i>
2033	<i>315,000</i>	<i>157,500</i>
2034	<i>315,000</i>	<i>157,500</i>
2035	<i>315,000</i>	<i>157,500</i>
2036	<i>315,000</i>	<i>157,500</i>
2037	<i>315,000</i>	<i>157,500</i>
2038	<i>315,000</i>	<i>157,500</i>
2039	<i>315,000</i>	<i>157,500</i>

EXHIBIT B

Table 2
Pressure Range and Maximum Flow Rate

Calendar Year (Reopener Schedule in bold type)	Pressure Range (psi)		Pressure Range (psi)		Pressure Range (psi)		Pressure Range (psi)		Pressure Range (psi)		Maximum Flow Rate (mgd)	
	Meter NV-01		Meter NV-02		Meter NV-03		Meter NV-04		Meter NV-05		Max Day	Peak Hour
	Min	Max	Min	Max	Min	Max	Min	Max	Min	Max		
2009	54	82	52	79	55	82	81	109	72	100	18.57	34.53
2010	54	82	52	79	55	82	81	109	72	100	18.57	34.53
2011	54	82	52	79	55	82	81	109	72	100	17.30	25.50
2012	54	82	52	79	55	82	81	109	72	100	16.80	24.50
2013	54	82	52	79	55	82	81	109	72	100	17.5	28.0
2014	54	82	52	79	55	82	81	109	72	100	17.9	28.6
2015	54	82	52	79	55	82	81	109	72	100	17.9	28.6
2016	54	82	52	79	55	82	81	109	72	100	19.0	19.0
2017	54	82	52	79	55	82	81	109	72	100	19.0	19.0
2018	54	82	52	79	55	82	81	109	72	100	19.0	19.0
2019	54	82	52	79	55	82	81	109	72	100	17.0	19.0
2020	54	82	52	79	55	82	81	109	72	100	17.0	19.0
2021	54	82	52	79	55	82	81	109	72	100	17.0	19.0
2022	54	82	52	79	55	82	81	109	72	100	17.0	19.0
2023	54	82	52	79	55	82	81	109	72	100	17.0	19.0
2024	54	82	52	79	55	82	81	109	72	100	17.0	19.0
2025	54	82	52	79	55	82	81	109	72	100	17.0	19.0
2026	54	82	52	79	55	82	81	109	72	100	17.0	19.0
2027	54	82	52	79	55	82	81	109	72	100	15.3	16.5
2028	54	82	52	79	55	82	81	109	72	100	15.3	16.5
2029	54	82	52	79	55	82	81	109	72	100	15.3	16.5
2030	54	82	52	79	55	82	81	109	72	100	15.3	16.5
2031	54	82	52	79	55	82	81	109	72	100	15.3	16.5
2032	54	82	52	79	55	82	81	109	72	100	15.3	16.5
2033	54	82	52	79	55	82	81	109	72	100	15.3	16.5
2034	54	82	52	79	55	82	81	109	72	100	15.3	16.5
2035	54	82	52	79	55	82	81	109	72	100	15.3	16.5
2036	54	82	52	79	55	82	81	109	72	100	15.3	16.5
2037	54	82	52	79	55	82	81	109	72	100	15.3	16.5
2038	54	82	52	79	55	82	81	109	72	100	15.3	16.5

EXHIBIT B

Table 3
Flow Split Assumptions

Meter	Assumed Flow Split (2027-2030)
NV-01	0 – 5 %
NV-02	0 – 5 %
NV-03	0 – 15 %
NV-04	50 – 70 %
NV-05	20 – 45 %

Table 4
Addresses for Notice

If to the Board: General Counsel Great Lakes Water Authority 735 Randolph, Suite 1901 Detroit, Michigan 48226	If to Customer: City Clerk City of Novi 45175 West Ten Mile Road Novi, Michigan 48375 Cc: Director of Public Works 26300 Lee BeGole Drive Novi, Michigan 48375
--	--