



cityofnovi.org

CITY OF NOVI STRATEGIC COMMUNITY RECREATION & MASTER PARK PLAN

2025-2029



ACKNOWLEDGEMENTS

A public hearing on the 2025 - 2029 Strategic Community Recreation and Master Park Plan was held on Date. The Plan was adopted by Novi City Council on November 25, 2024.

COMMUNITY MEMBERS OF THE CITY OF NOVI

JUSTIN FISCHER - MAYOR

CITY COUNCIL

Justin Fischer, Mayor
Laura Marie Casey, Mayor Pro Tem
David Staudt, Council Member
Brian Smith, Council Member
Ericka Thomas, Council Member
Matt Heintz, Council Member
Priya Gurumurthy, Council Member

CITY STAFF

Jeff Muck, Parks, Recreation and Cultural Services Director
Tracie Ringle, Parks, Recreation and Cultural Services Deputy Director
Kit Kieser, Parks, Recreation and Cultural Services Older Adult Services Manager
Sandy Fisher, Parks, Recreation and Cultural Services Social Services Coordinator
Steve Fellhauer, Parks, Recreation and Cultural Services Recreation Supervisor (Sports Programs)
John Gillingham, Parks, Recreation and Cultural Services Recreation Supervisor (Youth Programming and Camps)
Madison Lachance, Parks, Recreation and Cultural Services Recreation Supervisor (Older Adult Services)
T. Chase Root, Parks, Recreation and Cultural Services Recreation Supervisor (Sports Programs)

PARKS, RECREATION AND CULTURAL SERVICE COMMISSION

Jay F. Dooley, Committee Member	Joe Tolkacz, Committee Member
Swaminathan Gopalakrishnan, Committee Member	Hideki (Harry) Torimoto, Committee Member
Ryan Joseph, Committee Member	Pietro DiDomenico, Student Representative
Salene Riggins, Committee Member	Ishaan Sid, Student Representative
Charles A. Staab, Committee Member	Jeff Muck, Staff Liason

PARKS, RECREATION AND CULTURAL SERVICE STAFF

Jeff Muck, Director of PRCS
Tracie Ringle, Deputy Director of PRCS
Kit Kieser - Older Adult Services Manager
Sandy Fisher - Social Services Coordinator
Steve Fellhauer - Recreation Supervisor (Sports Programs)
John Gillingham, Recreation Supervisor (Youth Sports and Camps)
Stella Johnstone - Recreation Supervisor (Arts and Events)
Madison Lachance - Recreation Supervisor (Older Adult Services)
T. Chase Root - Recreation Supervisor (Sports Programs)

PREPARED BY:
City of Novi
Parks, Recreation and Cultural Services
City of Novi, MI 48375
cityofnovi.org

WITH ASSISTANCE FROM:
Spicer Group, Inc
Saginaw, MI 48607
www.spicergroup.com
Project #: 135281SG2023

TABLE OF CONTENTS

1 INTRODUCTION	3
2 COMMUNITY PROFILE	5
Overview	6
Demographics	7
3 ADMINISTRATIVE STRUCTURE	11
Introduction	12
City Staff	12
Parks, Recreation and Cultural Services Commission	14
Older Adult Services	15
Park Maintenance	15
Community Events	16
Parks and Recreation Funding	17
4 RECREATION INVENTORY	22
Introduction	23
City Parks and Recreational Facilities	25
Regional Parks and Recreational Facilities	45
Natural Features	49
Walkability	53
Parks and Recreation Policies	55
5 COMMUNITY INPUT	56
Overview	57
Public Open Houses	57
Community Input Survey	58
6 GOALS, OBJECTIVES & ACTION PLAN	62
Introduction	63
Goals and Objectives	64
Action Plan	64
7 PLANNING PROCESS	65
Process	66
Review and Adoption	66
8 APPENDIX	67
Full Survey Results	
Active Mobility Plan 2023 Graphic	
Adoption Documentation	



1 INTRODUCTION

INTRODUCTION

The City of Novi (City) has developed this Strategic Community Recreation & Master Park Plan (Plan) to guide future decision-making regarding recreation facility development, improvements, and acquisitions for the next five years. This strategic plan will be the basis for new policy implementation of improvements and initiatives that will ensure the City of Novi can meet the recreational interests and goals of City residents.

Before any Parks and Recreation Plan can be adopted or enacted, it is critical to understand the needs of residents of all ages, specifically those most vulnerable, such as young children, older adults and individuals with disabilities. It is also important to understand the existing recreational opportunities, who they serve, program initiatives, and potential projects that best fit the residents of the City. This Plan was strategically put together based on community input, suggestions from residents, City officials, City staff, Parks, Recreation and Cultural Services staff, and Older Adult Services staff with assistance from Spicer Group. Voices from a variety of groups, including those representing different cultural backgrounds, ages, and abilities, within the City united to develop the Plan with the overall goal of enhancing the quality of life for residents within the City and its visitors.

The foundation for the development of the City of Novi Strategic Community Recreation & Master Park Plan was based on the following goals:

- Involve the community in the process of developing a five-year Parks and Recreation Strategic Plan
- Identify and inventory existing park and recreational facilities for the City
- Ensure eligibility of the City for financial assistance based upon the Strategic Parks and Recreation Master Plan
- Facilitate interagency collaboration between the Parks, Recreation and Cultural Services Commission; Staff; and City of Novi City Council in establishing recreational goals, objectives, and an action plan
- Continue to support and implement improvements for barrier-free, universal access to all parks and recreational facilities

This Plan is developed in accordance with the *Guidelines for the Development of Community Parks and Recreation Plans* published by the Michigan Department of Natural Resources (DNR). A five-year, DNR approved Parks and Recreation Master Plan is necessary for the City of Novi to pursue DNR-administered grants.

This Plan is a strategic document that articulates the specific goals and objectives related to development and improvements of parks and recreation in the City. It is intended to serve as a guiding framework for the future expansion of services, recreation programming, facility enhancements, and park and facility development projects. This Strategic Community Recreation & Master Park Plan is written for the City of Novi and covers all aspects of recreation within the City from 2025 to 2029.



2

COMMUNITY PROFILE

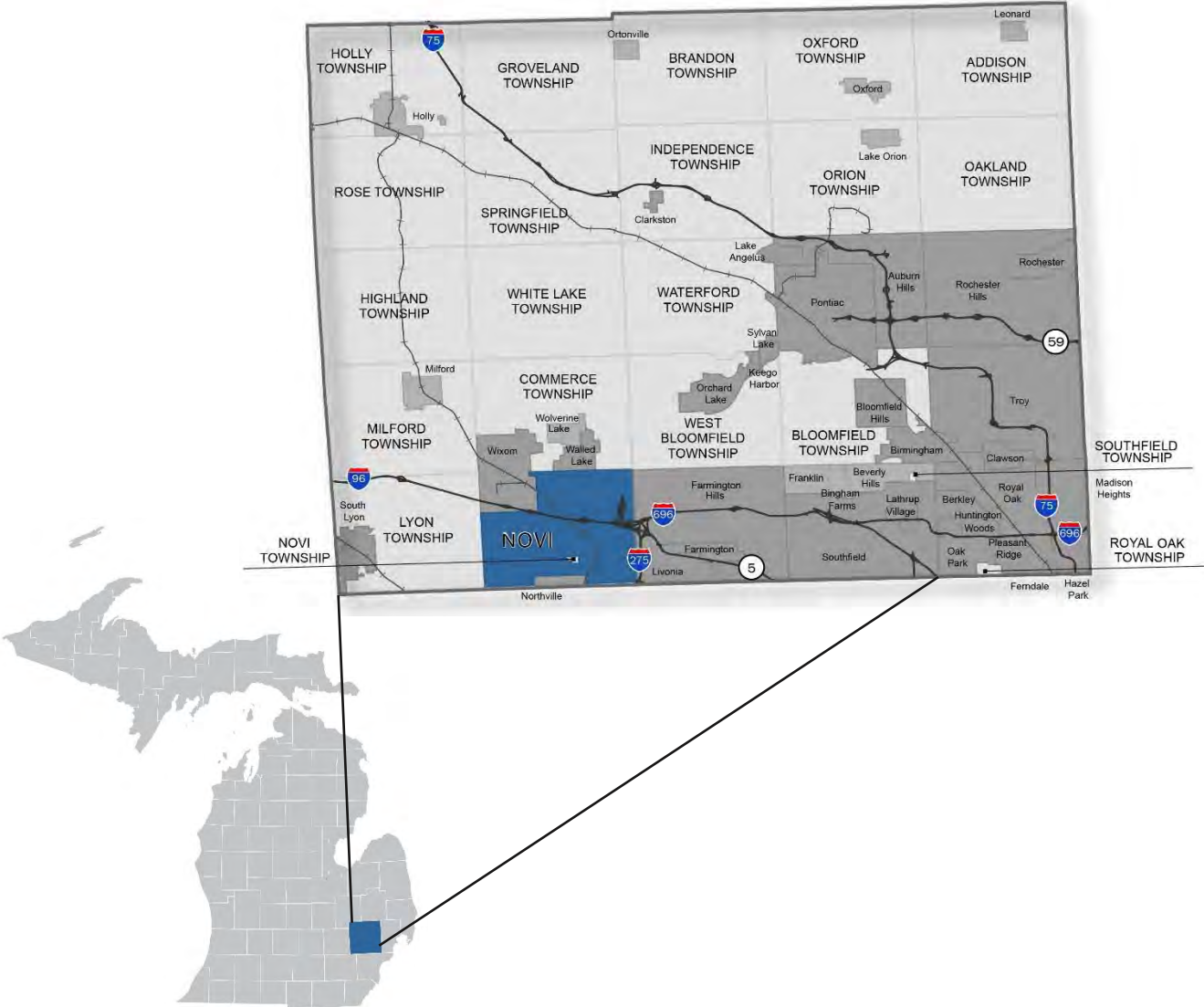
COMMUNITY PROFILE

OVERVIEW

This Plan covers the jurisdiction of the City of Novi. The City of Novi is located along the southern border of Oakland County. The City is a northwest suburb of Detroit, located approximately 25 miles from downtown Detroit. Novi is also located 25 miles northeast of Ann Arbor. The City is easily accessible with Grand River Avenue and I-96 crossing through the City east to west, and having easy access to I-275, I-696, and M-5.

The City is 31.29 square miles. Surrounding communities include Farmington Hills, Farmington, Livonia, South Lyon, Walled Lake, Wixom, Novi Township, Northville Township, Lyon Township, Commerce Township, and West Bloomfield Township.

MAP 1 – LOCATION OF THE CITY OF NOVI



DEMOGRAPHICS

Background information from the U.S. Census Bureau was used to analyze the City’s current demographic conditions. This section will examine Census-based data on overall population trends, education, housing characteristics, and economic information in the City to present an overall demographic condition analysis.

The information that is presented in this chapter uses the most recent Census data from 2010 and 2022 American Community Survey (ACS) data which is based on five-year estimates. Understanding the characteristics of the population is helpful when evaluating parks and recreation facilities and needs. An in-depth look at the demographics of the City of Novi compared to Oakland County and Michigan can be seen in Table 1.

TABLE 1 – CENSUS DATA FOR NOVI, OAKLAND COUNTY, AND MICHIGAN

Select Census Data for the City of Novi, Oakland County, and Michigan			
	City of Novi	Oakland County	Michigan
Population			
2010 Population	53, 823	1,203,012	9,877,574
2022 Population	66,375	1,269,431	10,034,118
Percent of Population 65 and Older	16.2%	18.5%	18.7%
Percent of Population Under 18	22.2%	20.0%	21.0%
Percent of Disabled Population	10.2%	11.2%	14.3%
Median Age	40.0	41.1	39.9
Education			
Percent with a Bachelor’s Degree or Higher	68.1%	50.6%	32.1%
Income			
Median Household Income	\$101,756	\$90,594	\$66,986
Per Capita Income	\$56,818	\$52,953	\$38,151
Percent of Population Below the Poverty Level	5.2%	8.1%	13.4%
Housing			
Average Household Size	2.44	2.37	2.40
Median Housing Values	\$439,900	\$250,000	\$244,000
Renter-Occupied Housing as a Percentage of Total Occupied Units	35.7%	27.5%	26.8%

CITY POPULATION

The City of Novi’s population in 2010 was 53,823. As of 2022, the population has grown to 66,375, for an increase of 12,552 (23.32%). According to the Southeast Michigan Council of Governments (SEMCOG) Regional Development Forecast, the City’s population is projected to increase to 74,081 by the year 2050, for a 37.63% increase in population from 2010.

TABLE 2 - POPULATION

U.S. Census		SEMCOG Projections		
2010	2022	% Change	2045	% Change
53,823	66,375	23.32%	74,081	37.63%

AGE CHARACTERISTICS

Age characteristics are important for communities when planning recreational offerings, as they help identify necessary facilities and areas for improvement. The types of facilities offered can change over time based on the population's age demographics. Additionally, the location of these facilities should consider the overall age distribution within the community.

TABLE 3 – AGE GROUPS

Age Group	Percent of Total Population
Under 5 years	5.5%
5-9 years	7.4%
10-14 years	8.0%
15-19 years	6.6%
20-24 years	4.8%
25-34 years	12.3%
35-44 years	16.4%
45-54 years	17.6%
55-59 years	5.8%
60-64 years	4.4%
65-74 years	4.9%
75-84 years	4.4%
85 years and older	2.0%

Median Age: 40.0 years

The median age within the City of Novi is 40 years. The City's median age is right on track with both Oakland County (41.1) and the State of Michigan (39.9). Novi's median age is up from 2010, when the median age in the City was 38.7. Additionally, in 1990 the City's median age was 32.5 and rose to 35.2 in 2000. This could suggest more needs for the older population in the future, as the median age has risen significantly since 1990. As of 2020, the median age has risen 7.5 years since 1990.

According to the SEMCOG 2050 Regional Forecast, the 65+ population made up 15.4% of the total population in the City of Novi in 2020. By 2050, it is estimated that the 65+ population will make up 19.3% of the total population. Due to the increasing 65+ population, the City should plan for necessary offerings and facilities. For instance, a community with a larger 65+ population may prioritize passive recreation options, such as paved walking trails and shaded seating areas outdoors, along with indoor spaces for casual socializing and unstructured gatherings.

Table 3 indicates the greatest need is for recreation facilities that serve residents aged between 25 and 54. While this includes many young and middle-aged adults, residents between these ages oftentimes have children of their own. Parks for middle aged and young adults, and children, could include both neighborhood parks and mini parks. Children often benefit from a wide range of programming, such as

activities and events. Providing organized sports leagues, such as basketball, baseball, softball, and soccer is a great way for children to learn the basics of sports and teamwork at a young age. Residents between the ages of 25 and 54 also need programming of their own. Popular adult activities in many communities involve softball leagues, basketball leagues, golf leagues, and pickleball. Additionally, as generations age into the 65+ demographic and are more physically active than before, the demand for programming and recreational activities has increased, reflecting their desire for both active engagement and passive indoor recreation. Developing multi-use paths is a great way to provide recreational assets for residents of all ages. Ensuring accessibility is essential throughout all City parks. This includes features such as closer parking, wayfinding signage, flat grading, ample seating, and plenty of shade to accommodate the diverse needs of the community.



PARTICIPANTS FROM CHAIR VOLLEYBALL PROGRAM

Photo Credits: Emily Elconin, AARP

UNIVERSAL DESIGN

According to the 2022 American Community Survey, 10.2% of the City of Novi's population has a physical, cognitive, or sensory disability, similar to the rest of Oakland County (11.2%) and slightly lower than the state average (14.3%). However, approximately 1 in 4 adults in the U.S. – or 25% - will experience a disability at some point in their lives, according to the Centers for Disease Control and Prevention (CDC). This highlights the importance of creating universally accessible parks to foster an inclusive community. Accessibility benefits everyone, as physical challenges can affect individuals at any stage of life. By ensuring that all parks and recreational spaces are designed without physical barriers, we enhance the quality of life for all residents and promote community engagement, social interaction, and active lifestyles.

CONNECTING CULTURES THROUGH RECREATION

The City of Novi is committed to being an inclusive community that welcomes individuals of all races, ethnicities, and backgrounds. The City recognizes and values the cultural diversity of all its residents and offers a variety of programs and events that celebrate this richness. For example, the library provides a collection of books and periodicals in 15 different languages. Additionally, the City supports activities that bring people together, such as cricket, soccer, and tennis. Novi also features a range of dance groups, including Ballet Folklorico Mexico Lindo and the Polynesian Dancers of Michigan, highlighting the vibrant cultural expressions within our community and creating opportunities for shared experiences. The City of Novi understands that reaching underserved populations is a continual effort and regularly strives to improve the recreation opportunities for all throughout the City.

TABLE 4 – RACE DEMOGRAPHICS

Race/Ethnicity	ACS 2010	Percent of Population	ACS 2022	Percent of Population	Percentage Point Change
White	40,098	74.5%	36,057	54.3%	-20.2%
Asian	8,201	15.2%	18,346	27.6%	12.4%
Black	2,810	5.2%	7,659	11.5%	6.3%
Hispanic	1,596	3.0%	2,796	4.2%	1.2%
Multi-Racial	873	1.6%	1,338	2.0%	0.4%
Other	245	0.4%	179	0.3%	-0.1%
Total	53,823	100%	66,375	100%	0%

EDUCATION AND INCOME

The City of Novi has a much higher percentage of residents with a bachelor's degree or higher (68.1%) compared to both Oakland County (50.6%) and the State of Michigan (32.1%). The City has a median household income of \$101,756. In comparison, this is slightly higher than Oakland County at \$90,594, and significantly higher than the State of Michigan at \$66,986. The poverty rate in the City, 5.2%, is also less than half of that of the state's (13.4%).

HOUSING

Housing statistics are valuable for communities when planning parks and recreation, as park usage can vary depending on where residents live. In the City of Novi, 35.7% of the population are renters. This is much higher than both Oakland County (27.5%) and the rest of the state (26.8%). It is important to keep renters in mind when it comes to parks and recreation, as they tend to have a greater need for open space and public park facilities. Renters are usually not offered large yards or open space in their rental units, so they take advantage of the City's parks and recreation offerings.



3

ADMINISTRATIVE STRUCTURE

ADMINISTRATIVE STRUCTURE

INTRODUCTION

The Novi Parks, Recreation, and Cultural Services was created at a Novi City Council Meeting on Monday, July 20, 1981, through the unanimous approval of Ordinance 81-36. In addition to the creation of the department, the Ordinance also gave authority to the City Manager to appoint a Director of Novi Parks. The Novi Parks, Recreation, and Cultural Services (PRCS) falls under the authority of the City of Novi. The government is a council-manager based entity that includes six elected officials and one mayor. The formation of the government is outlined in the City Charter Organization of Government. The City Council has the power to tax, approve the purchase or sale of park land, and is responsible for all policy-making decisions.

This chapter will take a look into how recreational activities and resources are governed and administered throughout the City. The facilities in the City are operated by Park Maintenance and Capital Projects.

The main bodies of the City of Novi Strategic Community Recreation and Master Plan are the City Council; the Parks, Recreation, and Cultural Services Commission; and City Staff.

CITY STAFF

The City Council serves the community of Novi. They work towards the betterment of the entire Novi community. City Council meetings are held twice a month on Mondays at 7:00 p.m. in the Civic Center Council Chambers. The Novi City Council consists of seven members including the Mayor and Mayor Pro Tem listed below. Also listed below are the City Manager, City Clerk, and City Attorney.

City Council/Elected Officials

Mayor – Justin Fischer

Mayor Pro Tem – Laura Marie Casey

Council Member – David Staudt

Council Member – Brian Smith

Council Member – Ericka Thomas

Council Member – Matt Heintz

Council Member – Priya Gurumurthy

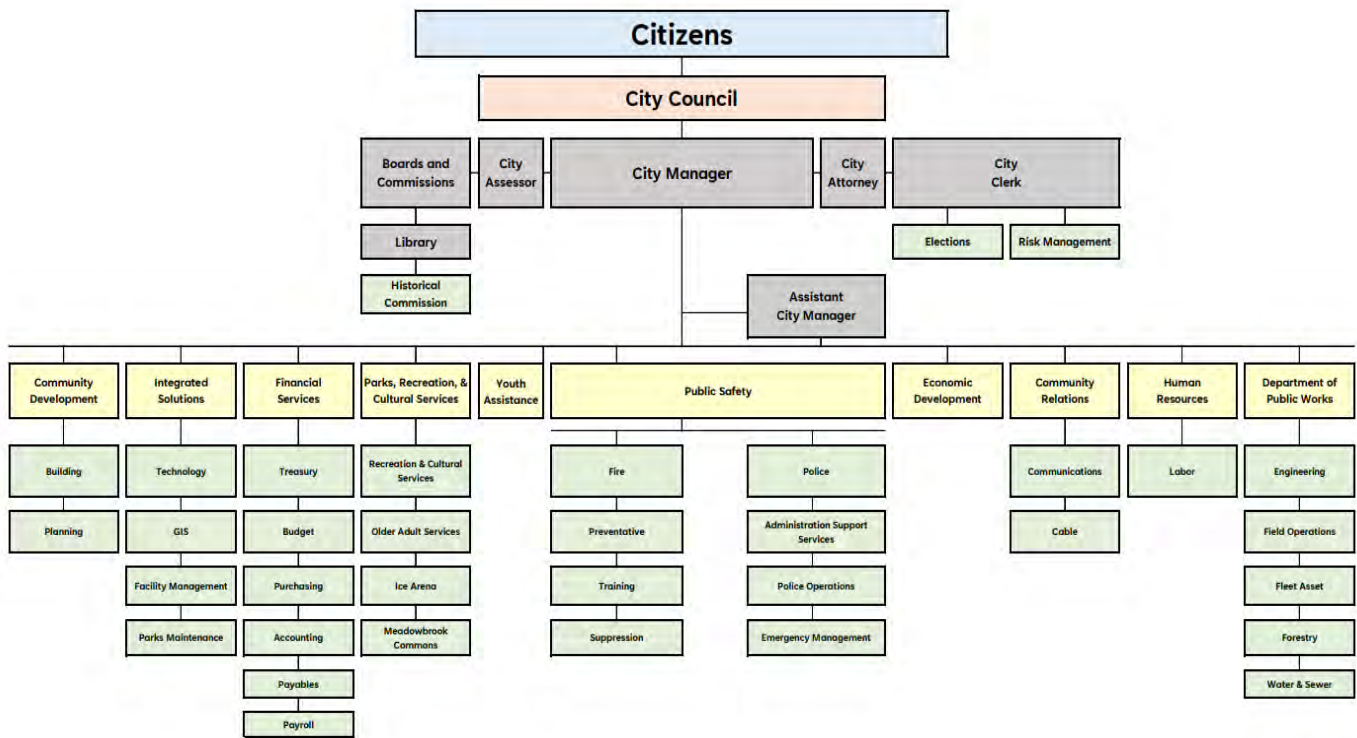
Appointed Officials

City Manager – Victor Cardenas

City Clerk – Cortney Hanson

City Attorney – Thomas Schultz

FIGURE 1 – ADMINISTRATIVE STRUCTURE CHART



NOVI PARKS AND RECREATION COMMISSION

PARKS, RECREATION, AND CULTURAL SERVICES COMMISSION

The Parks, Recreation, and Cultural Services Commission is comprised of seven members who are appointed by the City Council. There are two additional student representatives who are members of the Commission. The Commission’s main objectives are to set policy and make recommendations to the Parks, Recreation, and Cultural Services Department. The Commissioners work together with professional staff in the areas of programming, budgeting, facilities, planning, and public relations. The Commission is responsible for meeting community recreational objectives, and reflecting community needs to the Parks, Recreation, and Cultural Services Department and City Council. The Commission members can be seen below.

Commission Members

Jay F. Dooley

Swaminathan Gopalakrishan

Ryan Joseph

Salene Riggins

Charles A. Staab

Joe Tolkacz

Hideki (Harry) Torimoto

Pietro DiDomenico – Student Representative

Ishaan Sid – Student Representative

Jeffery A. Muck, CPRP – Parks, Recreation, and Cultural Services Director, Staff Liaison

VOLUNTEERS

The Novi Parks, Recreation, and Cultural Services (PRCS) Department uses volunteers to assist with a wide variety of programming such as coaching, Older Adult Services programs and activities, and special events and community events. Volunteers provide nearly 28,000 hours of service yearly to PRCS. Approximately 16,000 hours are completed in the area of youth sports programs, while nearly 12,000 hours are in the area of Older Adult Services and related programs.

ONGOING RELATIONSHIPS

PRCS has established several ongoing relationships, including a collaboration with Novi Schools to utilize their indoor facilities. PRCS also holds contracts with local youth organizations such as the Michigan Jaguars FC, Novi Youth Baseball Association, Madness Softball, and the Detroit Cricket Club. Additionally, PRCS has Memorandums of Understanding with the Motor City Mountain Biking Association and City of Northville Parks and Recreation.

OLDER ADULT SERVICES

The Older Adult Services Division provides a wide range of recreation opportunities and support services for adults and older adults. These include special events, fitness and wellness programs, social activities, travel trips, support groups, meals, evidence-based health programs, and more. Careful attention is given to the diverse needs and preferences of different generations, ensuring that programs remain inclusive and relevant as generations age. The division operates out of the Novi Civic Center, with the majority of programming taking place at the Civic Center and the Meadowbrook Activity Center. Programming and offerings for older adults, as well as other segments of the community including families and youth are discussed on pages 43 and 44.



PARKS, RECREATION AND CULTURAL SERVICES EMPLOYEES

PARK MAINTENANCE

The City of Novi parks are maintained by the Parks and Municipal Grounds Management Division. The Parks and Municipal Grounds Management Division, made up of eight full-time employees and 12 seasonal employees, provides seamless daily operations, maintenance, and strategic planning for City-owned parks and municipal grounds. Below is a list of their responsibilities.

- Utilize project management skills to deliver modern and safe park structures, facilities, and landscapes.
- Collaborate with all City departments to prepare for special events such as the Sizzling Summer Art Series in Fuerst Park, the Jack O’Lantern Jubilee in ITC Community Sports Park, and plenty of other special events throughout the City parks.
- Conduct inspections of park structures, playgrounds, parks, and municipal grounds to ensure safety and cleanliness.
- Develop and implement an innovative turf management strategy.
- Provide nationally recognized athletic fields for proper operation such as baseball fields in Ella Mae Power Park, ITC Community Sports Park, and Wildlife Woods Park; softball fields in Ella Mae Power Park and Wildlife Woods Park; soccer fields at Bosco Fields, ITC Community Sports Park, and Wildlife Woods Park; tennis courts at ITC Community Sports Park and Rotary Park, and pickleball courts at Wildlife Woods Park and Meadowbrook Commons.
- Procure and manage a variety of division assets to ensure inventory control and longevity.

COMMUNITY EVENTS

The City of Novi hosts numerous community events throughout its park system. Below is a list of some community events that are held in the City's parks.

- The International Society for Krishna Consciousness (ISKCON) Detroit's annual Festival of Chariots (Rath Yatra) parade and celebration, which also includes an exhibition showcasing India's spirituality and culture.
- The Novi Park Foundation's "Pour on the Shore", an annual beer and wine tasting event that raises funds for PRCS.
- The Motor City Mountain Biking Association (MCMBA) hosts an annual Tree Farm Relay mountain bike event that helps raise funds for trail maintenance.
- The Parks, Recreation, and Cultural Services Department hosts various events. Examples of these events include the Jack O'Lantern Jubilee, Sizzling Summer Concert Series, and the Detroit Institute of Art's Inside-Out Program.
- The City hosts an open house that is held on the grounds of the Novi Civic Center.



COMMUNITY GATHERING AT PAVILION SHORE PARK

PARKS AND RECREATION FUNDING

OPERATING BUDGET POLICIES

The City of Novi's financial policies set forth the framework for the City's overall fiscal management. The policies below assist in the decision-making process of both the City Council and City Administration. These policies provide guidelines for evaluating current activities and proposals for future programs, as well as to serve the administration in the preparation of a balanced operating budget and management of the City's financial affairs.

- The City will attempt to maintain its present level of service for all priority and essential services within the existing property tax millage limits.
- The City will maintain a budgetary control system to ensure adherence to the budget and will prepare periodic reports comparing actual revenues and expenditures with budgeted amounts.
- The City will emphasize efforts to reduce expenditures in major cost centers (i.e., energy, medical insurance premiums, street lighting, pension cost and workers' compensation payments).
- The Ice Arena, Senior Housing/Meadowbrook Commons and Water and Sewer Funds will be self-supporting.
- The City will protect against catastrophic losses through a combination of insurance and maintaining appropriate fund balance levels.

SPECIAL REVENUE FUNDS

A special revenue fund is a fund established to collect money that must be used for a specific purpose. These funds provide an extra level of transparency to the taxpayers that their tax dollars are being spent on an intended purpose. The City of Novi has a variety of special revenue funds which include Streets (major, local and municipal); Library; and Parks, Recreation, and Cultural Services. Projects in this fund have their own set of books for recording cash inflows and outflows.

PARKS, RECREATION, AND CULTURAL SERVICES FUND

The Parks, Recreation, and Cultural Services Fund is primarily funded through a millage and program fees. The divisions within this fund administer all Parks, Recreation, and Cultural Services operations, including strategic direction, policy development, resource identification, and serve as the liaison to the Parks, Recreation and Cultural Services Commission and the Novi Parks Foundation. Table 5 represents revenues and expenditures for Novi's Recreation, Parks, and Cultural Services system, including projected budgets from 2025-2027.

TABLE 5 – CITY OF NOVI PARKS, RECREATION, AND CULTURAL SERVICES FUND

Parks, Recreation, and Cultural Services Fund					
	Actual 2022-23	Estimated 2023-24	Budget 2024-25	Projected	
				2025-26	2026-27
Estimated Revenues					
Property tax revenue	\$1,590,121	\$1,681,110	\$1,771,762	\$1,832,220	\$1,872,991
Donations	\$3,600	\$102,150	\$500	\$500	\$500
Interest income	\$38,988	\$25,156	\$35,253	\$29,390	\$23,386
Older adult program revenue	\$282,137	\$222,600	\$222,600	\$222,600	\$222,600
Other revenue	\$652	\$1,000	\$1,000	\$1,000	\$1,000
Program revenue	\$1,754,477	\$1,475,745	\$1,564,770	\$1,464,770	\$1,544,770
Transfers in	\$25,000	\$250,000	\$25,000	\$220,000	\$200,000
Total Estimated Revenues	\$3,701,655	\$3,764,761	\$3,628,885	\$3,778,480	\$3,873,247
Appropriations					
Personnel services	\$1,474,368	\$1,488,077	\$1,516,426	\$1,579,851	\$1,636,333
Supplies	\$86,857	\$90,090	\$90,250	\$90,250	\$90,250
Other services and charges	\$1,600,033	\$1,647,169	\$1,615,599	\$1,613,599	\$1,667,324
Capital outlay	\$49,187	\$1,482,935	\$536,610	\$494,780	\$479,340
Total Appropriations	\$3,210,445	\$4,708,271	\$3,758,885	\$3,778,480	\$3,873,247
Net of revenues/appropriations – fund 208	\$491,210	(\$943,510)	(\$130,000)	-	-
Beginning fund balance	\$1,202,439	\$1,693,649	\$750,139	\$620,139	\$620,139
Ending Fund Balance	\$1,693,649	\$750,139	\$620,139	\$620,139	\$620,139
Fund balance as a percentage of total annual expenditures	53%	16%	16%	16%	16%
Ending Fund Balance (12% minimum)	\$385,253	\$564,993	\$451,066	\$453,418	\$464,790
Funds above / (below) 12% minimum	\$1,308,396	\$185,146	\$169,073	\$166,721	\$155,349
Ending Fund Balance (22% maximum)	\$706,298	\$1,035,820	\$826,955	\$831,266	\$852,114
Fund above / (below) 22% minimum	\$987,351	(\$285,681)	(\$206,816)	(\$211,127)	(\$231,975)
Estimated Change in Fund Balance	41%	-56%	-17%	0%	0%

ENTERPRISE FUND

Enterprise funds are used to account for continuing operations that provide services to the general public. They can fund parks and recreation by paying for maintenance, planning for future projects, and financing operations. Novi has two enterprise funds; the Ice Arena and Senior Housing/Meadowbrook Commons. Enterprise funds have no direct impact on the City's General Fund Budget. Financing for Meadowbrook Commons was provided through bonds issued by the Building Authority. The construction cost was \$12.5 million, and all expenses and the bond retirement are covered by rental revenue. The Ice Arena is self-sustaining. The revenue that is generated by operations covers operating expenses, including repayment of debt service.

MILLAGE

A property tax millage can be utilized to fund particular parks and recreation initiatives or to manage recreational facilities. Voter approval is necessary before a millage can be assessed and is subject to periodic renewals through resident voting. The City of Novi utilizes a millage of 0.3648 mills for the Parks, Recreation, and Cultural Services Fund, which has been reduced from the original 0.5 millage due to Headlee Rollback. This millage has been in effect since tax year 2017 and is assumed to continue at least through Fiscal Year 2026-2027. Funding for parks, open space, and cultural events is primarily from the Parks and Recreation dedicated millage that was established for maintaining parks and recreation purposes. The dedicated impact fees make up the main funding source for Parks, Recreation and Cultural Services. Parks, Recreation and Cultural Services is projected to receive over \$3 million over the next six years, or an average of just over \$500,000 per year from the Parks and Recreation dedicated millage.

USER FEES

The City charges fees to the users of certain recreation facilities, and for enrollment in many of the recreation programs that the City offers. User fees provide support for park facilities, and can be a reliable source of funding if used selectively.

BOND PROGRAMS

Bond programs may be used to finance the construction of parks and recreation facilities.

- **General Obligation Funds:** General obligation bonds are backed by the full faith and credit of a municipality and are typically paid back through property tax revenue. The proceeds of the bond are restricted to what they were issued for.
- **Revenue Bonds:** Revenue bonds are issued for construction of public projects that generate revenues. These bonds are paid back by generating income from the project. Revenue bonds may be issued for the construction of a concession facility in a community park.
- **Special Assessment Bonds:** Special assessment bonds are issued to pay for projects that benefit a particular area in a city. For example, recreation improvements in a certain neighborhood can be paid for by special assessment bonds. These bonds are paid back with taxes levied on those residents and properties that benefit from the project.

MICHIGAN DEPARTMENT OF NATURAL RESOURCES GRANTS

Michigan Spark Grants

Eligible projects may include the development, renovation, or redevelopment of public recreation facilities, and the provision of recreation-focused equipment and programs at public recreation spaces. Individual grant amounts range from \$100,000 to \$1 million. Funds may be used for project review, planning, architecture, engineering, and construction.

Natural Resources Trust Fund

Communities may use this grant to provide for natural resource protection and outdoor recreation. No less than 25% of the trust fund available for annual appropriation can be used for the acquisition of public land. Additionally, no less than 25% of the trust fund can be used for the development of public recreation facilities. Approximately \$15 - \$20 million will be available for grants each year. Development projects have a minimum of \$15,000 and a maximum of \$400,000 available per grant. There are no minimum/maximum grant amounts on land acquisition grants. Projects are evaluated based on natural resource access and conservation, proximity to population clusters, applicants committed matching funds and financial needs, and priority projects of the trust fund board. This grant requires a DNR-approved five-year recreation plan.

Land and Water Conservation Fund

The Land and Water Conservation Fund provides matching grants to states and local governments for the acquisition and development of public outdoor recreation areas and facilities. Any unit of government may apply for this grant. The minimum grant request amount is \$30,000, while the maximum grant amount is \$500,000. There is no minimum or maximum limit on land acquisitions, but the Department cannot award grants exceeding their annual apportionment from the National Parks Service. Projects are evaluated using established criteria and alignment with Michigan's Statewide Comprehensive Outdoor Plan (SCORP). The Michigan Department of Natural Resources makes recommendations to the National Parks Service on which applications to fund, while the National Parks Service gives final approval.

Recreation Passport Grant

The Recreation Passport Grant provides funding to local units of government to develop public recreation facilities. This would include the development of new facilities and the renovation of old facilities. Development grants of \$7,500 to \$150,000 are available to local governments. At least 25% of the total cost of the project is required as a match from the applicant. Projects are evaluated based on the need for the project, site quality, quality of the park design, and applicant history.

COMMUNITY DEVELOPMENT BLOCK GRANT (CDBG)

The Federal Community Development Block Grant (CDBG) program provides grant funding that can be used for a variety of community projects such as public facilities installation, community centers, and land acquisition for parks in low to moderate income neighborhoods that would qualify for the CDBG program.

DONATIONS/SPONSORSHIPS

Many communities will have businesses, clubs, and civic organizations make donations to the community or sponsor an event run by the community to benefit the community. These contributions may be in the form of money, the donation of land to expand parks, volunteering at events, or the contribution of equipment or facilities.

FOUNDATIONS

A foundation is a special non-profit legal entity that is established as a mechanism through which land, cash, and securities can be donated for the benefit of parks and recreation services. The foundation's board of directors disperses assets according to a predetermined plan. Funding for recreation facilities through foundations is very limited.

The Novi Parks Foundation supports the City of Novi Parks, Recreation, and Cultural Services. The Foundation raises money for the purpose of supporting park enhancements, recreational opportunities, and scholarship programs for local children. The Novi Parks Foundation's mission is to enhance the recreational, educational, and cultural life of the Novi community by encouraging and soliciting support for Novi Parks, Recreation and Cultural Services.

The Novi Parks Foundation is governed by a volunteer Board of Directors. The Board gives their time, talent, and financial resources unselfishly. Since the Foundation's inception in 2004, the Foundation has provided plenty to the City's Parks and Recreation. A complete list of this can be seen below:

- \$320,000 towards construction of Jessica's Splashpad
- \$80,000 towards construction of Wildlife Woods Park pickleball courts
- \$150,000 for the newly remodeled Tim Pope Playground
- \$118,000-contribution to Phase 1A of the ITC Corridor Pathway
- \$70,000 Villa Barr Art Park donation for artist-in-residency house renovations and support of parking, pathways and signage project
- \$51,800 in support of public art projects
- \$50,000 in contributions to Pavilion Shore Park development
- \$45,000 for Fuerst Park Gardens
- \$30,000 for the design of playground at Power Park
- \$14,650 for Parks & Recreation Needs Assessment Survey
- More than \$13,500 in youth recreation scholarships
- More than \$9,000 in soccer field improvements and lacrosse equipment purchases
- \$4,000 to the Artist in Residence program at Villa Barr
- \$3,400 to support the construction of the Gazebo at Meadowbrook Commons
- \$3,000 for Fate of Empires to install at Pavilion Shore Park

LEASE OR CONTRACTUAL AGREEMENTS

The City may consider contracts with private entrepreneurs. These private entrepreneurs could provide services within city-owned facilities, such as a food service, recreation programming apart from the City, and the maintenance of facilities. The privatization of some services may provide additional recreational opportunities to residents while maintaining the City's administrative costs.

ACQUISITION AND DEVELOPMENT

The Novi City Council approves the acquisition, maintenance, management and control of parkland throughout the City. The City of Novi’s policy for acquisition development is listed below:

The Michigan House Rule Cities Act, MCL 117.35, Section 35, Page 41, City of Novi Charter, Chapter 2, Page 5, Section 2.2, Municipal Powers, and the City of Novi Charter, Chapter 12, Page 35, Section 12.1, Purchases, Sales, Contracts and Leases, allows the City Council to approve the acquisition, maintenance, management and control of parks, beaches, facilities, structures for preservation purposes, and areas of recreation.



PAVILION SHORE PARK



4 RECREATION INVENTORY

RECREATION INVENTORY

INTRODUCTION

In order to plan for parks and recreation in the future, communities need to examine the types of parks and recreation facilities currently available within the area. It is also important to examine factors such as accessibility and park classification to better understand both current users and those who may benefit from these facilities in the future. This information, along with community input, helps the City better understand what future improvements or acquisitions are needed to enhance parks and recreation for Novi residents. The inventory presented in the chapter was updated by planning consultants in the summer of 2024 and verified by City staff. The text below includes a description of park classifications and Americans with Disabilities Act (ADA) accessibility ratings with a park amenities table later in the chapter that includes accessibility and park classifications for each park and recreation facility within the City. The analysis and inventory of Novi parks and recreational facilities, in conjunction with community input, provided a foundation for the formulation of the goals, objectives, and action plan provided in Chapter Six.

The City of Novi owns and manages over 1,500 acres of parkland ranging in size from under one acre up to 600 acres, including 28 miles of trails. The parks draw more than 140,000 users annually through a variety of programs and events offered.

PARK CLASSIFICATION AND SERVICE AREA

A recreation inventory provides an overview of all the available facilities within a community, along with details about the types of activities and features available. The following classification system is adapted from the National Recreation and Parks Association (NRPA) guide. The system is classified based on size, service area, facilities, and user groups. There are six classifications used for the City of Novi parks and recreation facilities. The NRPA classifies several other types of parks, but they are not applicable to the City of Novi.

Mini Park

A mini park, also known as a pocket park, is a small outdoor recreation space usually between 2,500 sq. ft. to one acre in size. These parks address limited, isolated, or unique recreational needs of concentrated populations. Mini parks serve an area within a ¼ mile radius of the park.

Neighborhood Park

Neighborhood parks are the most basic unit of the park system and serve a neighborhood's recreation and social focus. Neighborhood parks are easily accessible to neighborhood populations and geographically centered within a safe walking distance with bike access. These parks are typically five to ten acres in size and serve an area between ¼ mile to ½ mile distance to the park.

Community Park

Community parks are designed to provide recreational services to several neighborhoods and typically serve a broad range of uses based on community needs. They are usually 30 to 50 acres in size and

intended to serve two or more neighborhoods, making the service area anywhere from ½ mile to three miles.

Natural Resource Area

Natural resource areas are areas of natural quality for nature-oriented outdoor recreation such as viewing and studying wildlife, hiking, or general conversation and gathering. These lands aim at preserving significant natural resources, remnant landscapes, open space, and visual buffering.

Linear Park

Linear Parks are connections that link places or parks together. Linear parks are typically designed for multiple modes of recreational transportation such as walking, jogging, hiking, biking, or horseback riding. There are no specific standards for linear parks. These spaces should be sufficient to protect resources and provide recreational usage.

Special Use Facility

Special use facilities cover a broad range of parks and recreation facilities oriented toward a single-purpose use. There is no national standard for special-use facilities because each one caters to a different community need.

ACCESSIBILITY

It is essential to create a park system that is safe, accessible, and usable to all individuals, including those with disabilities. By designing and upgrading parks using the principles of universal design, Novi ensures that people of all abilities and experiences can fully engage in parks and recreation. This includes individuals with permanent, temporary, or evolving accessibility needs. Planning with universal design also ensures that, as the population ages and routine movements or tasks become more challenging, all individuals will continue to have access to the parks and recreation facilities. By prioritizing accessibility through universal design in all future developments, the City is fostering a park system that supports the diverse needs of the entire community, regardless of age, ability, or background.

A grading system has been developed by the Michigan Department of Natural Resources (DNR) to easily identify those parks and facilities that are most and least accessible, based on the Americans with Disabilities Act (ADA) Guidelines. The accessibility grading system uses a five-point system ranging from one (none of the facilities/park areas meet accessibility guidelines) to five (the entire park was developed/renovated using principles of universal design). See Table 6 below for the full grading system. Accessibility grades for each park and recreation facility can be seen in Table 7 later in the chapter.

TABLE 6 – DNR ACCESSIBILITY GRADING SYSTEM FOR PARKS AND RECREATION FACILITIES

Accessibility Grade	Definition
1	None of the facilities/park areas meet accessibility guidelines
2	Some of the facilities/park areas meet accessibility guidelines
3	Most of the facilities/park areas meet accessibility guidelines
4	The entire park meets accessibility guidelines
5	The entire park was developed/renovated using the principles of universal design

CITY PARKS AND RECREATIONAL FACILITIES

The City of Novi owns and manages twenty-nine parks and recreation facilities for residents and guests of Novi to use. Below is the list of these parks and facilities as well as descriptions detailing each. Map 2 on page 40 displays each of the parks and recreation facilities within the City. A full table of the parks and recreation facilities within the City and their amenities can be found on page 41 in Table 7.



YOUTH SOCCER LEAGUE

PARKS AND RECREATIONAL FACILITIES

Beacon Hill Trail Head Park

Location: 41300 Twelve Mile Road, Novi

Acres: 3.2

ADA Accessibility: 1

Classification: Neighborhood Park

Beacon Hill Trail Head Park is located next to the Michigan State University (MSU) Tollgate Farm. This park is currently undeveloped open green space owned by the City. No plans have been created for the future development of this park space yet.



Bosco Fields & Jessica's Splash Pad

Location: 47481 Eleven Mile Road, Novi

Acres: 81.2

ADA Accessibility: 3

Classification: Community Park

Bosco Fields opened in the spring of 2022 and is home to multi-purpose sports fields. The park includes thirteen fields of four sizes, including 4v4, 7v7, 9v9, 11v11, and open green space areas. Parking areas are available off Beck Road and off 11 Mile Road, and restrooms are available seasonally. Jessica's Splash Pad is also within the park. The splash pad was built in honor of former FOX 2 Meteorologist Jessica Starr-Rose and opened in the summer of 2024. The splash pad is open 10 am to 8 pm from the Saturday of Memorial Day Weekend through Labor Day, weather permitting. The splash pad contains weather themed features and is accessible for visitors of all ages and abilities.



Brookfarm Park

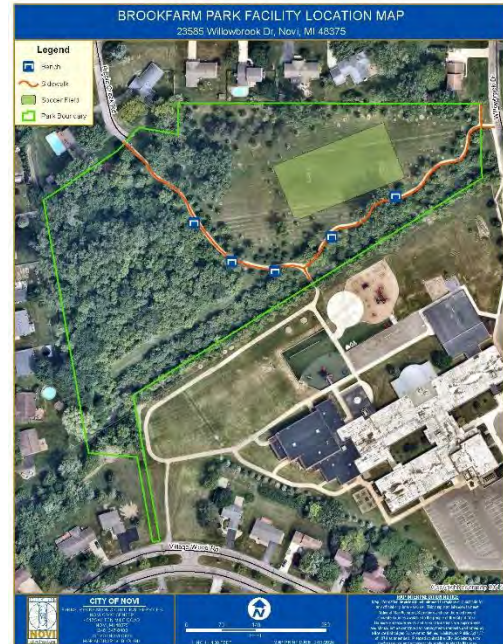
Location: 23585 Willowbrook Drive, Novi

Acres: 7.7

ADA Accessibility: 3

Classification: Neighborhood Park

Brookfarm Park is a neighborhood park located next to Village Oaks Elementary School. The park features a .2-mile paved walking path with five benches placed along the path. Open green space is located throughout the park with a soccer field available for sports. The park also contains a small stream and bridge that was installed in 2014.



Ella Mae Power Park

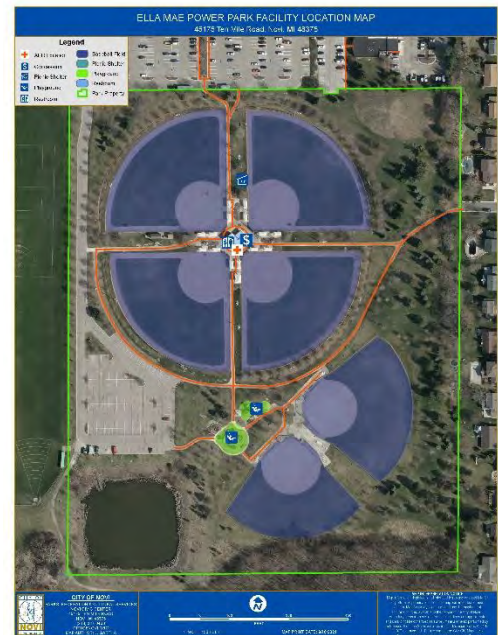
Location: 45175 Ten Mile Road, Novi

Acres: 45.1

ADA Accessibility: 3

Classification: Community Park

Ella Mae Power Park is an athletic complex located at the Civic Center Campus. The site shares parking with that of the Civic Center. Part of the park serves primarily to softball leagues. This space includes six softball diamonds, restrooms, a concessions stand, and a picnic shelter. The softball fields are available to rent. Also within this area are two play structures. One of the two structures was redesigned to include 100% inclusive play equipment for children ages 2 to 12. This play structure opened in the summer of 2021 and was designed to match the colors and style of the other inclusive play structure installed in 2014. In 2022, a cabinet with an AED was placed in the park. The cabinet also provides automatic calls to 911 when accessed, video surveillance, temperature control, and real-time information concerning incidents or events.



Fuerst Park

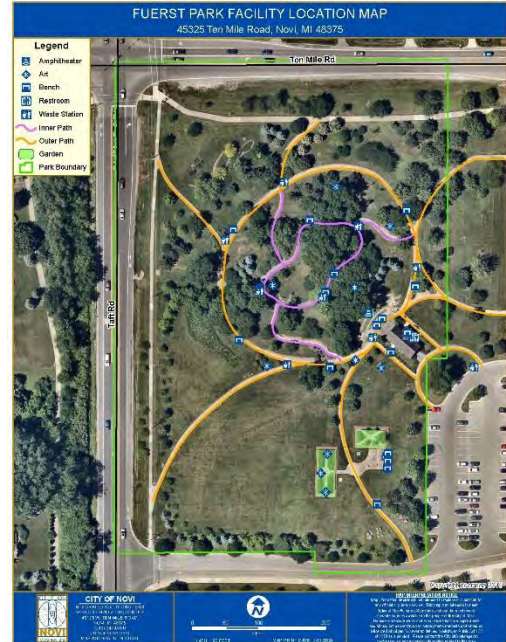
Location: 45325 Ten Mile Road, Novi

Acres: 8.4

ADA Accessibility: 2

Classification: Community Park

Fuerst Park is located adjacent to the Novi Public Library and Novi High School. This park includes paved walking trails, open green spaces, and sculptural art pieces that visitors can enjoy. A 150-seat amphitheater located within the park hosts family-friendly performances from May to October. The park also features the historic Novi Township Hall, which was restored and completed in October of 1990. The park includes WIFI access as long as visitors have a valid Novi Public Library card, and restrooms are available during the school summer break. The Township Hall and Amphitheatre are available to reserve for small gatherings, making the park a welcoming gathering space for the community.



Grand River Fields

Location: 46479 Grand River Avenue, Novi

Acres: 8.5

ADA Accessibility: 2

Classification: Neighborhood Park

Grand River Fields is an eight-acre park that is used mainly for soccer. The park has a parking area and four soccer fields of two different sizes that are available for use.



ITC Community Sports Park

Location: 51000 Eight Mile Road, Northville

Acres: 73.8

ADA Accessibility: 3

Classification: Community Park

ITC Community Sports Park is an athletic complex located in the far southwest corner of Novi. This park includes fourteen soccer fields of four sizes, including 11v11, 9v9, 7v7, 4v4, and ten baseball diamonds. Tournaments are hosted on these fields throughout the year. Also included are two basketball courts and two tennis courts that are also used as pickleball courts on Tuesday, Thursday, and Friday from 8 am to 1 pm. Two concession stands and three restrooms are available throughout the park. Two play structures are available in the park for children to use. One is located at the north end of the park, and the other is located at the south end. The North play structure was replaced in 2021 to feature an inclusive design for children ages five to 12 to use. Also included are independent pieces designed for those ages two to five. A picnic structure is available within the park and can be reserved to host gatherings and events. The park also features open spaces and eight commemorative trees. Throughout the park are paved sidewalks and the ITC trail runs north to south through the east side of the park.



ITC Community Sports Park Expansion

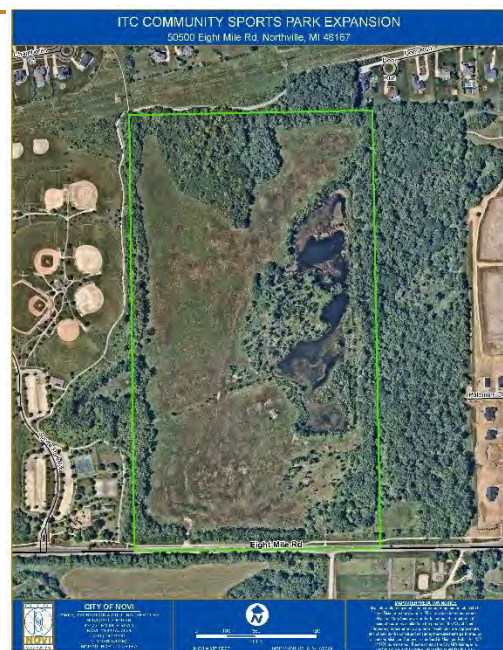
Location: 50500 Eight Mile Road, Northville

Acres: 88.32

ADA Accessibility: 1

Classification: Community Park

The ITC Community Sports Park Expansion is a recently acquired piece of park land that will be an extension on the ITC Community Sports Park. This expansion is 88.32 acres located next to ITC Community Sports Park. The land is currently open green space and wooded areas. Also on the property is West Novi Lake.



ITC Corridor Trail

Trailheads: 51000 Eight Mile Road, Novi; 49272 Nine Mile Road, Novi; 26442 Wixom Road, Novi

Length: 4.66 miles

ADA Accessibility: 5

Classification: Linear Park

The ITC Corridor Trail is a 4.66-mile paved multi-use trail that runs north to south in the City of Novi. This trail links together two of the City’s other parks, Wildlife Woods Park and ITC Community Sports Park. The trail is open from dawn to dusk, and restrooms are available seasonally at the three trailheads. Along the trail are two bike repair stations and the trail contains a boardwalk and scenic overlook. In the future the trail will link to other regional recreation opportunities such as Maybury State Park, the I-275 Corridor Trail, and other neighboring communities.



ITC Trail Comfort Station

Location: 49272 Nine Mile Road, Novi

Acres: 0.2

ADA Accessibility: 3

Classification: Mini Park

The ITC Comfort Station is a mini park located along the ITC Corridor Trail. The comfort station provides parking, a small pavilion, bike repair station, and benches to use while taking a break while using the trail.



ITC Trailhead Park

Location: 22475 Garfield Road, Northville

Acres: 13.3

ADA Accessibility: 3

Classification: Special Use Facility

In 2018, the City of Novi acquired this land with the help of a Michigan Natural Resources Trust Fund Grant for the future development of a trailhead park. This park features open greenspaces that include both woodlands and wetlands. A shelter including benches and a bike repair station was constructed in 2023.



ITC Trailhead Park Expansion

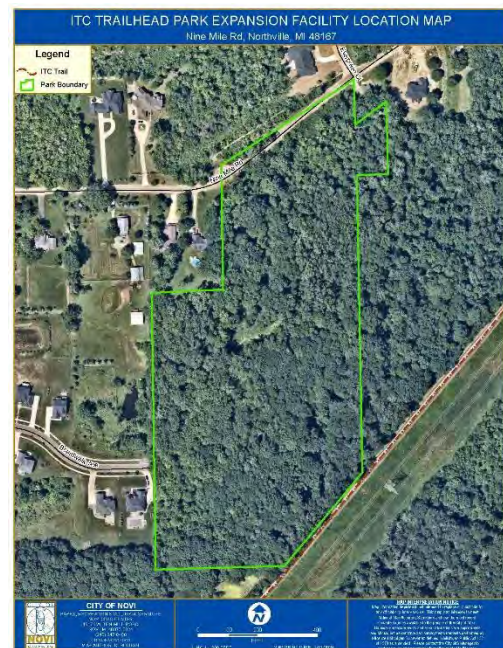
Location: 50500 Eight Mile Road, Northville

Acres: 20.31

ADA Accessibility: 1

Classification: Community Park

The ITC Trailhead Park Expansion was property acquired in 2019 to be an expansion of ITC Trailhead Park. This park contains woodlands and wetlands and remains undeveloped open space.



Lakeshore Park

Location: 601 South Lake Drive, Novi

Acres: 600.6

ADA Accessibility: 3

Classification: Community Park

Lakeshore Park is the largest park owned and managed by the City of Novi. It offers a variety of passive and active recreation options ensuring all residents can enjoy the space. The park includes a swimming beach on Walled Lake, three picnic shelters with grills, an area to play horseshoes, two multi-use fields, sand volleyball court, and restrooms. The park also provides two play structures for children to use. Lakeshore Park has a multi-use trail system visitors can utilize as well as ten miles of mountain bike trails. In 2023, the pedestrian beach tunnel at Lakeshore Park was improved. This included a new pre-cast tunnel, improved drainage, and reconstruction of South Lake Drive. Other site improvements included new fencing, guardrail, sidewalk, signage, and lockable gates on both sides of the tunnel. Pavilion Shore Park is located nearby and provides additional amenities to residents and visitors.



Novi Civic Center

Location: 45175 Ten Mile Road, Novi

Acres: 11.1

ADA Accessibility: 4

Classification: Special Use Facility

The Novi Civic Center is located adjacent to the Novi Police Department and shares parking facilities with Ella Mae Power Park. This building is home to the City Offices and there are a number of meeting rooms available for residents to rent. Other rooms such as the atrium, council chambers, multi-use quad, activities room, kitchen, and fitness studios can be rented out to use as well. The City hosts some of its fitness classes such as cardio drumming, Morning Tone and Stretch fitness, and run team at the Civic Center. This space is often used to hold community events as well.



Meadowbrook Commons/Activity Center

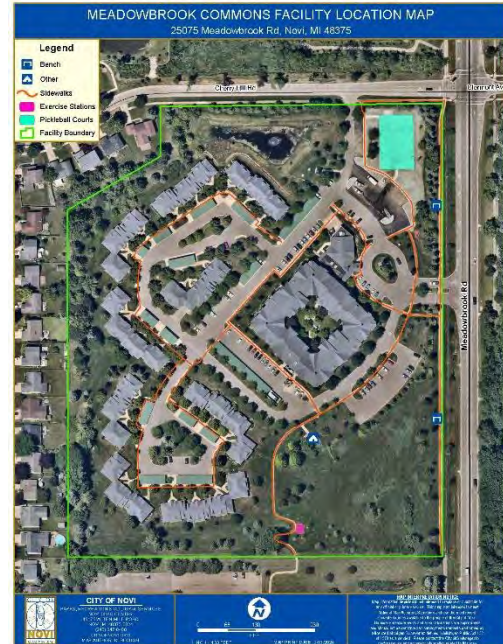
Location: 25075 Meadowbrook Road

Acres: 18.6

ADA Accessibility: 5

Classification: Special Use Facility

Meadowbrook Commons is an independent senior living facility that is home to over 200 older adults living in one- or two-bedroom apartments. Meadowbrook Commons opened in 2001 with the assistance from a 1999 senior housing facility bond. A pond was added to the north end of the site near the road entrance in the fall of 2008. An outdoor exercise equipment station that focuses on mobility instead of strength training was added in 2016. In 2024 four pickleball courts were added at Meadowbrook Commons. This contributes to the City of Novi's goal of providing active recreational opportunities for all residents no matter of age or ability. The site also features a gazebo that was installed in 2014. Also located on site is the Meadowbrook Commons Activity Center. The activity center hosts fitness programs for those 50 years and older such as chair yoga, Tai Chi, Stretch and Strength, Zumba Gold, Keep on Movin', and Zumba. Other activities, events, and groups are hosted at the activities center such as bingo, support groups, and daily lunch.



Novi Dog Park

Location: 42390 Nick Lidstrom Drive, Novi

Acres: 7.6

ADA Accessibility: 3

Classification: Special Use Facility

Novi Dog Park is located behind the Novi Ice Area. This park provides designated off-leash space for dogs to come and play. Three-quarters of an acre is designated for small and timid dogs, while approximately one and a half acres is allocated for all other dogs. A membership is required to use the park and there is a key fob entry at the entrance gate. Within the park there are benches, drinking fountains for humans and pets, and dog waste stations.



Novi Ice Arena

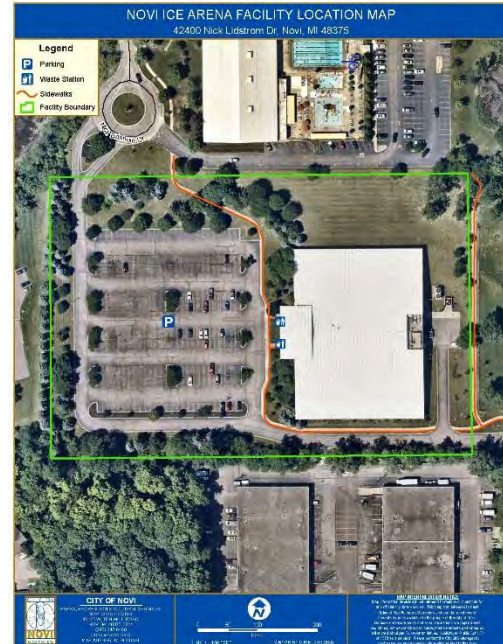
Location: 42400 Nick Lidstrom Drive, Novi

Acres: 7.6

ADA Accessibility: 4

Classification: Special Use Facility

The Novi Ice Arena was opened in September of 1998. This facility offers two NHL regulation size ice rinks with seating capacities of 750 and 250 people. The facility also offers heated viewing areas, a pro shop, two cafes, skate rental, and space for meetings and parties. Also provided are eight large locker rooms, an officials room, a figure skating dressing room and coaches dressing room. A number of programs are hosted here such as the Novi Youth Hockey Association, Skating Club of Novi, Novi High School and Northville High School hockey teams. The Novi Ice Arena is managed by Suburban Ice of Farmington Hills.



Novi Northwest Park

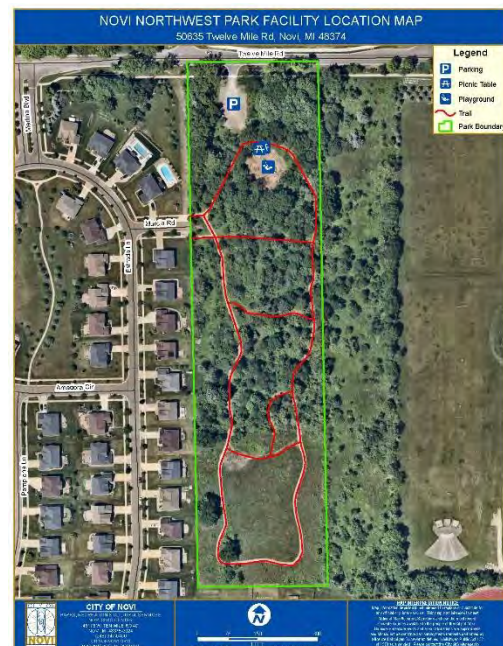
Location: 50635 Twelve Mile Road, Novi

Acres: 9.9

ADA Accessibility: 2

Classification: Neighborhood Park

The City of Novi acquired this land in 2015 through a Michigan Natural Resources Trust Fund Grant, and in 2017, the land was officially designated as parkland. In April of 2022, the City was awarded \$100,000 from Oakland Parks and Recreation Park Improvement Grant Program for the development of the parkland. The park was opened in late summer 2024 with a .5-mile ADA pathway traversing the site, a custom nature-based playground, and a parking lot. The park also features an open prairie area.



Pavilion Shore Park

Location: 43390 Thirteen Mile Road, Novi

Acres: 11.5

ADA Accessibility: 4

Classification: Community Park

Pavilion Shore Park is located along the southern shore of Walled Lake and is a short walk away from Lakeshore Park. The park has crisscrossed paved walking paths throughout that take visitors to one of three scenic lookouts over the lake. A fishing pier and waterfront seating are available. Also within the park is a picnic pavilion, play structure, historical markers, and restrooms. The restrooms are available seasonally from May 1st to November 1st. This park is on the former site of the Walled Lake Amusement Park and the Walled Lake Casino. The picnic pavilion is shaped and colored in reference to the former Casino building.



Rotary Park

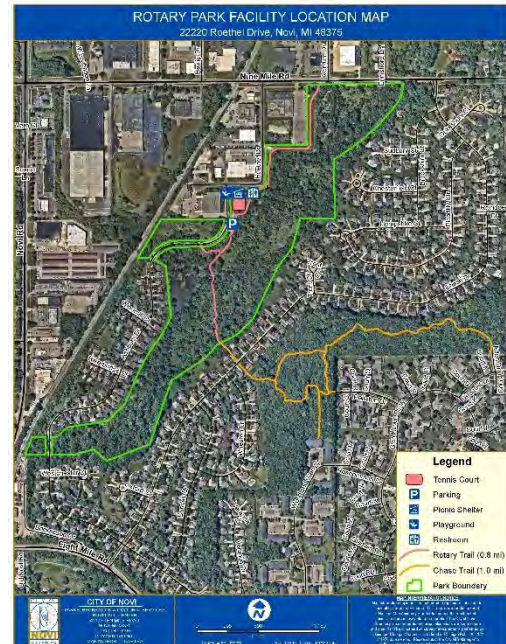
Location: 22220 Roethel Drive, Novi

Acres: 66.1

ADA Accessibility: 3

Classification: Community Park

Rotary Park follows along a portion of the Middle Rouge River and consists of woodlands and wetlands. Nature trails and benches are located throughout the park and are surrounded by open greenspace for visitors to enjoy. Also located within the space are two tennis courts, a picnic shelter, restrooms, and a play structure. The picnic shelter is available to reserve for gathering and events. This park was developed through donations from the Rotary Club and a Michigan Land and Water Conservation Fund Grant.



Villa Barr Art Park

Location: 22600 Napier Road, Novi

Acres: 4.0

ADA Accessibility: 2

Classification: Special Use Facility

The Villa Barr Art Park was previously owned by David Barr and Beth Dwaihy Barr. Now it is a park space within Novi that focuses on enhancing art within the City. In the park is a home, studio, and multiple art sculptures for visitors to enjoy. The park also features a pathway and interpretive signage that takes visitors through the park. The park features resident artists who create works that are then donated or loaned to the City for up to five years. Artists also lead discussions, tours, and programs for visitors of the park. The park has been awarded a Keep Michigan Beautiful Award in 2019 and a grant from the Michigan Council for the Arts and Cultural Affairs.



Village Wood Lake Park

Location: 40944 Village Wood Road, Novi

Acres: 14.3

ADA Accessibility: 4

Classification: Neighborhood Park

Village Wood Lake Park is located adjacent to Meadowbrook Lake. This park features a natural walking trail and open greenspaces for sports and gatherings. Throughout the park there are benches and picnic tables for visitors to use.



Water Tower Park & R/C Raceway

Location: 25460 Novi Road, Novi

Acres: 3.64

ADA Accessibility: 2

Classifications: Special Use Facility

The property for this park was purchased by the City in 2017. Since then, the water tower on the property has been restored, and the R/C Raceway Track has been constructed. The track allows for 1/8 scale and smaller battery powered R/C models to race. The track can be used from dawn to dusk from May 1st till November 1st. Restrooms are available seasonally at the track.



Wildlife Woods Park

Location: 26600 Wixom Road, Novi

Acres: 28.5

ADA Accessibility: 3

Classification: Community Park

Wildlife Woods Park is a mix of sports fields and woodlands located adjacent to Novi Middle School. The park has two baseball or softball fields, multi-use field, and four pickleball courts. In November of 2021, shaded outdoor exercise equipment stations were installed. These stations were designed to allow 18 people to exercise at one time. The stations are for people ages 14 years and older and are designed to include wheelchair users. The park also includes a paved path and provides a connection to the ITC Corridor Trail. The park has restrooms and a picnic shelter. 2024 updates to the park include a parking lot expansion and the addition of another four pickleball courts. Sidewalks connect Wildlife Woods Park to the adjacent Novi Middle School. The school provides amenities such as three basketball courts, twelve tennis courts, and a track and field. These amenities expand upon the recreational uses within the park.



NATURAL RESOURCE AREAS

The City of Novi owns six parcels of undeveloped parkland that is used for conservation spaces within the City. The intent of these parks is to preserve the natural features available on the land and ensure natural spaces remain for residents in years to come. The six natural resource areas are presented below.

Garfield Road Conservation Area

Location: Garfield Road and Nine Mile Road, Novi

Acres: 106.7

Garfield Road Conservation Area is a recreation space owned by the City of Novi that aims to conserve the natural habitat that exists on the site. The land is primarily wooded with some open green spaces, and three small lakes.

Novi Core Habitat

Location: Nine Mile/Napier

Acres: 102.4

Novi Core Habitat is an undeveloped conservation area owned by the City. This property is primarily made up of woodlands and wetlands.

Orchard Hills West Park

Location: Marlott Drive, Novi

Acres: 40.6

Orchard Hills West Park remains undeveloped as a conservation area within the City. The Park has the Middle Rouge River winding through half of the park. Within the park there are open green spaces, mature trees, flowers, a river, and an abundance of wildlife to view. This park is open for visitors to observe nature and explore.

Ten Mile North Boardwalk

Location: Ten Mile Road and Novi Road, Novi

Acres: 8.0

The Ten Mile North Boardwalk was acquired by the City of Novi in recent years and remains an undeveloped green space. Although no formal plans have been made, the City is considering future development. Current ideas for the space include nature trails and a wetland overlook.

Ten Mile South

Location: Ten Mile Road Between Napier Road and Beck Road, Novi

Acres: 90.9

Ten Mile South is a space owned by the City of Novi that is used as a conservation area. The space is located off of Ten Mile Road between Napier and Beck Road. The space primarily consists of woodlands and wetlands. There are no plans to develop this into a usable space in the future, the City plans to keep this as a conservation area.

Terra Park

Location: Nine Mile Road between Napier Road and Beck Road, Novi

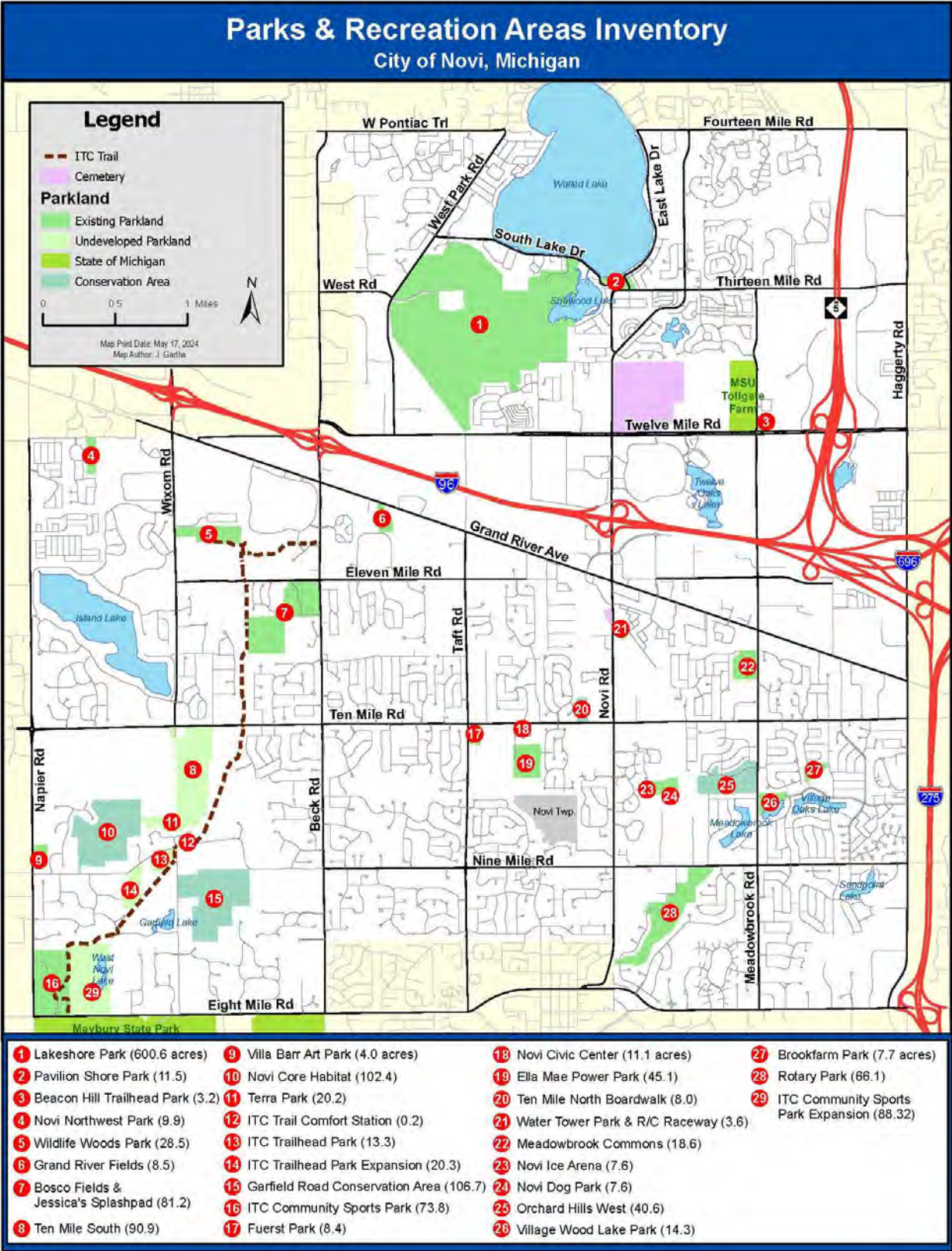
Acres: 20.2

Terra Park is a space owned by the City of Novi that is used for a conservation area. The park is located off of Nine Mile Road between Napier Road and Beck Road. Terra Park abuts the southern portion of Ten Mile South and together forms a larger conservation area in the southwestern portion of the City. The City does not have plans to develop this property, but instead let it remain conservation space.



ITC CORRIDOR TRAIL AND NATURAL AREAS

MAP 2 – PARK AND RECREATION INVENTORY MAP



COMPARISON TO STANDARDS

The National Recreation and Park Association (NRPA) annually gathers data from parks and recreation agencies nationwide to provide an overview of parks and recreation agencies' performance. With this data the NRPA publishes an NRPA Agency Performance Review that provides jurisdictions and agencies with reports, tables, graphs, and other data visuals that provide an idea of a "typical" agency within a given population. The purpose of this performance review is to provide agencies with a tool to compare their own performance with that of comparable US agencies. This helps identify areas where the agency is performing well and identify areas where improvement could be made. The 2024 NRPA Agency Performance Review presents data from approximately 1,000 park and recreation agencies across the Country.

Based on the 2024 NRPA Agency Performance Review a typical agency that serves a population size of 50,000 to 99,999 has 3,344 residents per park. The City of Novi, who maintains 29 parks and recreation spaces, has 2,288 residents per park. This is lower than the median number for this population size and about even with the lower quartile number of 2,173 residents per park. This means that the City of Novi is providing a larger number of parks for its residents than other agencies serving a similar population. In addition to the parks and recreation spaces provided by the City, the City of Novi maintains 28 miles of trails. For agencies with a similar population size, the median was 18.1 miles of trails. The City is providing residents with more trails than cities of a comparable size. The upper quartile for this population range was 37 miles. With additional planning and development, the City of Novi could reach the upper end of trail mileage for its population size.

For parks and recreation agencies with a population similar to Novi's size, the median annual operating expenditures was \$7,710,075. The City of Novi's Department of Parks, Recreation, and Cultural Services has an annual operating budget of \$3,758,885 for 2024. This falls within the lower quartile of comparable cities, as it is below \$5,348,266. This, considered with the trails and park space provided to residents, could lead to the conclusion that the City of Novi is working more efficiently than other agencies serving this population range. When broken down the median operating expenditure per capita for parks and recreation agencies of this size is \$120.72. The City of Novi has a median operating expenditure per capita of \$56.6. This number is lower than that of the lower quartile which is \$74.14. The median amount of parks and recreation revenue per capita for agencies serving similar population sizes is \$33.17. The City of Novi has a parks and recreation revenue per capita of \$54.7. This is greater than that of the median.

The 2024 NRPA Agency Performance Review also provides an abundance of information of parks and recreation facilities and amenities based on population. For agencies of similar size, there are typically 1 play structure for 3,707 residents. The City of Novi has 7,375 residents per play structure. The median number of rectangular fields for other agencies of this size is 4,070 residents per rectangular field. The City of Novi has only 1,896 residents per rectangular field. This signifies that the City has a larger number of these facilities available than that of comparable agencies. Other agencies have a median of 3,675 residents per diamond field. The City of Novi is right on par with that of other agencies with 3,687 residents per diamond field. When compared to all agencies, only 40% have a performance amphitheater. This is a unique feature that the City of Novi provides for its residents since only 40% of other agencies also have one. Looking towards improving access to recreational facilities, 62% of comparable agencies have a recreation center and 59% have community centers. The City should see

this as an opportunity. While Novi currently does not have a community center or recreation center the establishment of one is listed as a goal, within Chapter 6 of this Plan.

While these metrics are helpful, it is critical to remember that there is no one size fits all when it comes to solutions for maintaining and improving a parks and recreation agency. The 2024 NRPA Agency Performance Review does not provide standards for parks and recreation agencies to strive for but instead serves to inform as a guideline based on evidence from other agencies. In order to be successful, an agency should customize its offerings based on the needs and wants of its community members and their unique characteristics such as age, interests, backgrounds, and economic means.

PROGRAM INVENTORY

The nationally accredited Novi Parks, Recreation, and Cultural Services Department provides facilities, programs, classes, and opportunities where memories are created, skills developed, and quality of life and relationships with friends and families are enhanced. Quality parks and recreation programs invite and retain business, generate retail sales, improve property values, provide economic impact, and attract citizens to the community. The Vision of Novi PRCS is “To be seen as an essential service whose benefits are recognized and valued in the Novi community.”

The Recreation Division engages more than 140,000 users annually with a variety of programs. Recreation programs are offered based on national accreditation guidelines, citizen survey data, and partnerships. Prices range for these services, with some being free and others costing a fee to participate. Residents can register online, through the mail, or in person. The City also releases the Engage Recreation Guide several times a year that details all the City is offering during that period of time.

Youth and Families

Novi residents understand and appreciate the importance of recreation for children and families alike. Special events provide families with the chance to explore unique celebrations, traditions, and experiences. The City offers a wide range of youth sports leagues, including both recreational and select options in soccer, archery, basketball, volleyball, cornhole, t-ball, baseball, tennis, lacrosse, karate, flag football, and ice hockey.

Beyond sports, Novi also provides a variety of programs such as dance, theater, nature activities, and camps. Parent and adult involvement is essential to the success of these programs, as they not only contribute as coaches and mentors, but also create meaningful opportunities for families to build relationships and strengthen the community.

Adult

The City of Novi offers a wide range of recreational opportunities for adults to stay active and engaged. Community events, such as the Memorial Day Run, Fuerst Field of Honor, and various nature programs like the Arbor Day event, Perennial Exchange, and Garlic Mustard Pull, provide meaningful ways to connect with the community. Adult sports leagues include basketball, cricket, cornhole, golf, softball, volleyball, pickleball, table tennis, and tennis. In addition to sports, the City offers fitness programs such as the Happy Trails walking group, Novi Run team, Zumba, yoga, and cardio drumming catering to

diverse fitness interests and levels. The City also hosts rotating art shows in the Atrium of the Civic Center and an artist-in-residence program at Villa Barr, highlighting local and regional talent.

Older Adult

The City of Novi is dedicated to promoting active and engaged lifestyles for residents of all ages. The Older Adult Services Division provides a wide range of programs and services tailored to meet the needs of older adults in the community, offered at both the Novi Civic Center and Meadowbrook Activity Center. Fitness options include low-impact cardio, strength training, chair yoga, Tai Chi, chair volleyball, as well as softball and golf leagues. Social activities such as card games, hobby groups, bingo, and book clubs, and special events offer opportunities for connection and fun. Support services include a durable medical equipment loan closet, technology assistance, Medicare counseling, legal consultations, health screenings, and essential nutrition programs like Meals on Wheels, the Daily Lunch program, and food assistance. This diverse array of programs is intent on fostering support, lifelong learning, wellness, and social engagement for older adults and the broader community.



CHAIR VOLLEYBALL LEAGUE

DNR GRANT HISTORY

Previously, the City of Novi has received eleven grants for parks and recreation. These include seven Natural Resources Trust Fund grants, three Land and Water Conservation Fund Grants, and one Recreation Bond Fund. Table 8 below provides detail on each of the past 11 grants.

TABLE 8 – CITY OF NOVI GRANT HISTORY

Project Title	Project Number	Project Year	Grant Amount	Status	Description
Ella Mae Power Park	26-01060 V2	1978	29,000	Closed	Development of two softball fields
Ella Mae Power Park	26-01110	1980	27,500	Closed	Development of a playground, a concession/storage building, and LWCF sign
Brookfarm Park	26-01235	1981	16,000	Closed	Development of two tennis courts
Novi Nature Area	TF88-078	1988	166,350	Withdrawn	To acquire approximately 100 acres of natural area adjacent to the City's park on South Lake Road
Rotary Park Development	BF-93-168	1993	75,000	Withdrawn	Development of natural trails, tennis courts, playground areas, and picnic facilities
Village Wood Lake/Orchard Hills West Acquisition	TF05-165	2005	846,400	Closed	Acquisition of 51 acres containing 5,200 acres of frontage on the Middle Rouge River, Village Wood Lake, and wetlands
Novi Core Habitat Reserve Property Acquisition	TF07-017	2007	281,300	Closed	Acquisition of 16.2 acres of wooded wetland adjacent to Singh Trail Parkland
Landings Park Trailhead / Waterfront Development	TF10-043	2010	437,500	Closed	Development of trailhead for existing and future non-motorized regional pathway system within the 11-acre Landings Parkland and create accessible waterfront park with 835 feet of naturalized shoreline
Novi Northwest Neighborhood Park	TF14-0235	2014	385,000	Closed	Acquisition of 10 acres for potential parkland near the City's western border for citywide uses
ITC Regional Trailhead Park	TF16-0111	2016	402,500	Closed	Acquisition of 13 acres located on Nine Mile Road, adjacent to the planned ITC Corridor Trail
ITC Trailhead Park Expansion	TF17-0162	2017	367,500	PA Executed	Preserve 20 acres of natural woodland and wetland habitat adjacent to the ITC Corridor Trail

DEPENDENCE ON SCHOOL FACILITIES

The City of Novi Parks, Recreation, and Cultural Services relies on school facilities for certain activities as well as additional park land throughout the City. Some of the City parks are located adjacent to Novi schools. All schools located within the City of Novi are listed below with the park facilities that they offer:

- Novi High School is located at 24062 Taft Road and offers a baseball field, softball field, football stadium, soccer field, tennis courts, gymnasium, and an open field that is used as a practice field for the High School's athletic teams. Novi High School is adjacent to Fuerst Park and Ella Mae Power Park.
- Detroit Catholic Central High School is located at 27225 Wixom Road and offers a baseball field, tennis courts, and a multi-use field that is used for football, soccer, and lacrosse.
- Novi Christian Academy is located in the Brightmoor Christian Church at 40800 W 13 Mile Road and offers a baseball field, softball field, soccer field, basketball hoops, and a small playground.
- Novi Middle School and Deerfield Elementary School are located next to each other, with Novi Middle School being located at 49000 W 11 Mile Road and Deerfield Elementary School being located at 26500 Wixom Road. These locations offer a football and soccer field, tennis courts, a nature plaza, basketball hoops, and two playgrounds. These two schools are adjacent to Wildlife Woods Park.
- Novi Woods Elementary School, Novi Meadows Elementary School, and Parkview Elementary School are all located next to each other, with Novi Woods Elementary being located at 25195 Taft Road, Novi Meadows Elementary located at 25299 Taft Road, and Parkview Elementary located at 45825 W 11 Mile Road. These schools offer multiple soccer fields, multiple parks, three baseball fields, and a basketball court.
- Orchard Hills Elementary School is located at 41900 Quince Street and offers multiple small playgrounds, a basketball court, and an open field that can be utilized for baseball, soccer, or lacrosse.
- Village Oaks Elementary School is located at 23333 Willowbrook Drive and offers a playground, basketball court, and soccer field.
- Thornton Creek Elementary School is located at 46180 W 9 Mile Road and offers multiple playgrounds, a baseball field, and basketball court.
- Hickory Woods Elementary School is located at 30655 Novi Road and offers a small playground and an open field that can be utilized as a soccer field.
- Meadowbrook Elementary School is located at 29200 Meadowbrook Road and offers basketball hoops, a playground, and a baseball field. The school is also located next to a trail loop.
- The Michigan State University Tollgate Farm and Education Center is located at 28115 Meadowbrook Road. The Tollgate Farm and Education Center provides non-formal learning for children, families, and adults by offering the experience of agriculture hands-on. The Center hosts a variety of educational programs and classes which include 4-H youth programs, homeowner horticulture, school and community programs, community food system education, woodlot management, and agriculture and natural resources.

REGIONAL PARK AND RECREATIONAL FACILITIES

Residents of the City of Novi not only have a number of different recreational opportunities within the City, but the residents also have a vast variety of recreational opportunities within the surrounding areas. Within Oakland County there are a number of County owned parks for residents to use and enjoy. The County is also home to two of the Huron Clinton Metropolitan Authority Metroparks, and the County offers a number of recreation land owned by the State of Michigan. The text below inventories those other recreational opportunities offered within Oakland County.

OAKLAND COUNTY PARKS

Oakland County owns and maintains thirteen parks, eighty miles of paved and natural trails, and a farmers' market for residents and visitors of the area. Below are descriptions of four parks within the Oakland County Parks system that are the closest and most convenient for City of Novi residents to use for recreational purposes.

Lyon Oaks Park

Lyon Oaks Park is a 1,041-acre park that aims at preserving 800 acres of environmentally sensitive wetlands. The park features a number of amenities that include picnic shelters, playgrounds, horseshoe pits, a dog park, and an 18-hole golf course and driving range. Also within the park are a variety of different fields and courts for sports such as volleyball, pickleball, soccer, and cricket. The park features six miles of natural trails visitors can use for hiking and biking in the summer and cross-country skiing in the winter.

Catalpa Oaks County Park

Catalpa Oaks County Park is a park consisting of 24 acres of open green space. In this green space, there are one youth soccer field, four full-size soccer fields, play structures, a walking path around the perimeter, and a picnic pavilion. This park has modern bathrooms that are open from April to October.

Highland Oaks County Park

Highland Oaks County Park is 302 acres consisting of rolling hills, wetlands, and pastures. Visitors can fish from an accessible floating dock within the park, and hunting is allowed within designated areas. The park offers 2.5 miles of trails that can be used for hiking, horseback riding, and cross-country skiing.

Waterford Oaks County Park

Waterford Oaks County Park is 199 acres and is the headquarters of the Oakland County Parks and Recreation Commission. Waterford Oaks County Park is also home to the Waterford Oaks Wave Pool and Waterford Oaks Bicycle Motocross (BMX) Track. This park provides a vast variety of recreation opportunities to visitors that include a universally accessible play structure, platform tennis courts, sand volleyball courts, sledding hill, and outdoor fitness equipment. The park also offers three miles of hiking trails throughout the park. The Park hosts the Oakland County Farmer's Market, which is open year-round.

HURON CLINTON METROPOLITAN AUTHORITY

The Huron Clinton Metroparks is a regional park system that covers Livingston, Macomb, Oakland, Washtenaw, and Wayne counties. The park system includes 13 parks spanning nearly 25,000 acres of parkland. While none of the Metroparks are within City boundaries, three of the parks are located within Oakland County. These parks include a variety of passive and active recreation options and nearly 400 miles of trails.

Indian Springs Metropark

Indian Springs Metropark is over 2,000 acres with a number of lakes and the Huron River winding through it. The park consists of prairies, woodlands, wetlands, and meadows and provides a variety of amenities to its users. Available are an environmental discovery center, picnic areas, splash pad, playgrounds, native plant gardens, and a golf course. In winter, visitors can cross-country ski, snowshoe, and go sledding down the park's sledding hill. The park contains a number of trails. Within the park is 2.5 miles of equestrian trails that connect to more than 17 miles within the Pontiac Lake Recreation Area. There are five different nature trails within the park varying in length from as little as .25 miles to 3.25 miles. The park also includes eight-mile paved multi-use trail typically used for hiking and biking.

Kensington Metro Park

Kensington Metropark is 4,481 acres surrounding Kent Lake. This Metropark is located in both Livingston County and Oakland County. The park consists of wooded and hilly terrain that is home to an abundance of wildlife. This park features a variety of trails; paved and unpaved, mountain biking, water trails, four equestrian trails, and four nature trails. It also includes a beach, boat launch, camping area, golf course, disc golf course, splash pad, waterslide, volleyball courts, baseball diamonds, and many picnic areas. The park also offers a large variety of winter activities to ensure participation year-round.

Stoney Creek Metropark

Stoney Creek Metropark is 4,435 acres that surrounds the 500-acre Stoney Creek Lake. This Metropark is located in both Oakland and Macomb counties. The landscape of the park consists of woodlands, wetlands, prairies, and fields. This park features an impressive trail system for hikers, bikers, and skiers. Boat and bike rentals are available. A number of water amenities are available in the park that include, beaches, a boat launch, fishing, a waterslide, and paddling opportunities. Other amenities include basketball courts, volleyball courts, golf course, disc golf course, playgrounds, baseball fields, sledding hills, nature center, campgrounds, and more. The park provides ample opportunities for parks and recreation year-round.

STATE

Near the City of Novi, the State of Michigan owns and manages ample parks and recreation opportunities. Within the area there are a multitude of state parks and recreation areas. Below are descriptions of some of the recreation opportunities offered by the State near Novi.

Dodge #4 State Park

Dodge State Park is 139 acres and popular for its location on the shore of Cass Lake. The park includes a variety of water based recreational opportunities such as swimming, fishing, and paddling, as well as access to the boat launch, kayak launch, beach, beach house, and kayak and boat rentals. Hiking and biking are also available within the park.

Highland Recreation Area

Highland Recreation Area is approximately 5,900 acres and is home to over 10 inland lakes. The recreation area provides amenities such as a designated swimming beach, boat launches, playground, picnic areas, volleyball courts, dog trial areas, and restrooms. A modern lodge, campground, rustic, and equestrian camping options are available for guests. The recreation area is home to miles of trails. Thirteen miles of equestrian trails, 16 miles of mountain biking trails, and 2.75 miles of hiking trails are available within the recreation area. In the winter, the park can be used for cross-country skiing, snowshoeing, and snowmobiling.

Island Lake Recreation Area

Island Lake Recreation Area is approximately 4,000 acres that remains mostly undeveloped to provide a natural feel with a mix of open brush, mature hardwood forests, and open meadows. The recreation area consists of four inland lakes and is located along the Huron River making the park a prime location for water recreation opportunities like fishing, swimming, and canoeing/kayaking. The area offers four trails ranging from four miles in length to almost 10 miles, one of which connects to the Kensington Metropark Bike Trail, and the area provides water trail opportunities. The area also provides a few camping opportunities.

Maybury State Park

Maybury State Park has 944 acres of open meadows, mature forests, and rolling terrain. The park provides a variety of activities for guests to do, such as hiking, biking, fishing, and riding. The park has an accessible playground for children to use as well as a riding stable. Four types of trails are provided at the park: equestrian, hiking, mountain biking, and paved bicycle trails. The Maybury equestrian trails are eight miles of looped trails that are open year-round. Maybury hiking trails consist of six miles of interconnecting loops that spread all throughout the park. Snowshoeing and cross-country skiing are available to do on the hiking trails in winter. Also offered are seven miles of single-track mountain biking trails and four miles of paved bicycle trails. The City of Novi could collaborate with the MDNR on connecting the ITC Corridor Trail to the trail systems within the park. This would provide access for Novi residents to Michigan State Park land through the use of the Novi Park System.

Pontiac Lake Recreation Area

Pontiac Lake Recreation Area is 3,745 acres that offers a variety of recreation opportunities for visitors. The park includes marshes, ponds, forests, fields, and Pontiac Lake as a backdrop for the opportunities offered. The park offers a variety of camping options, including rustic campgrounds, cabins, and a modern campground. Amenities include playgrounds, boat launches, swimming areas, ranges, and trails. The Recreation Area has 17 miles of equestrian trails, 1.9 miles of hiking trails, and 11 miles of mountain biking trails. In the winter, the hiking trails can be used for snowshoeing and cross-country skiing.

Proud Lake Recreation Area

Proud Lake Recreation Area is approximately 3,300 acres located on the Huron River and Proud Lake. The recreation area has a variety of active and passive recreation options available to visitors. The area provides a variety of camping opportunities for visitors, from cabins and lodges to camping sites. Four boat launches are available within the area as well as canoe and kayak rental options. Two trails are located within the area. The Proud Lake Recreation Area provides a trail system that offers walking trails, equestrian trails, and biking trails.

NON-MOTORIZED TRAILS

Regionally there are a number of non-motorized trail systems that residents of Novi can use. The City can work with surrounding jurisdictions to build connections to these trail systems to then help serve larger regions. These connections can also be connected back to other parks and recreational facilities such as parks and recreation centers to continue to expand access to parks and recreation. The City should continue its plan for active transportation options like those of non-motorized trails by continuing to implement the strategies, designs, and long-term plans outlined in the City's 2023 Active Mobility Plan which, includes expanding non-motorized paths to create connections with others in the region ultimately creating a larger regional trail network. A summary graphic of the Plan can be found in Appendix B.

I-275 Metro Trail

The I-275 Metro Trail is a 31.7-mile paved trail. The trail starts at the northern end in Novi along Meadowbrook Road. The trail follows along I-275 south until it gets to M-14 and stops along Edward N Hines Drive. The trail then picks up again after a break back along I-275. The trail continues south until it ends in New Boston next to Willow Metropark and Oakwoods Metropark.

M-5 Metro Trail

The M-5 Metro Trail is a 2.2-mile paved trail that follows M-5 between Commerce Township and the City of Novi. The southern portion of the trail ends at 13 Mile Road. It is here that there is a connection to the I-275 Metro Trail that users of the trail can continue onto.

Hines Park Trail/Rouge River Gateway Greenway Trail

This Trail is comprised of two trails that connect to one another. The Rouge River Gateway Greenway Trail starts in Dearborn and continues north for two miles through the University of Michigan – Dearborn Campus. From there the trail turns into the Hines Park Trail. The Hines Park section of the trail is 17.5 miles long and ends in Northville. Much of this stretch of the trail runs through Wayne County's linear trail, Hines Park. Just over halfway through, the trail intersects with that of the I-275/M-5 Trail. Views of the Rouge River are available throughout the trail as one travels along.

Huron Valley Trail

The Huron Valley Trail is a 13.2-mile paved rail trail that forms a Y-like shape. The trail follows the former Grand Trunk Railroad. The southernmost section of the trail starts in South Lyon and extends north. Once the trail reaches New Hudson, it splits in two. The first continues north and follows along the same path and ends just before it reaches Wixom. The other branch turns west and follows along I-96. This branch

of the trail ends at the Island Lake Pathway, which extends into Kensington Metropark to the north and Island Lake Recreation Area to the west.

WATER TRAILS

Another form of trail is becoming popular within the State of Michigan that is not on land but instead utilizes Michigan's vast water resources, water trails. These are trails through lakes, rivers, canals, and bays designed for people to canoe or kayak through. The National Water Trails Program is a subset of the National Recreation Trails Program provided through the National Park Service. These trails are established as a way to protect and restore rivers, shorelines, and waterways throughout the Country. The State of Michigan has several nationally designated water trails as well as many state designated trails.

Huron River Water Trail

One National Water Trail System runs through Oakland County, the Huron River Water Trail. The Huron River Water Trail is 104 miles long and starts at Proud Lake in Commerce Charter Township and end when the river empties into Lake Erie south of Detroit. The trail offers a variety of paddling experiences from flat, still water to some rapids. Everyone can use the water trail because a few universally accessible kayak launches are available along the route.

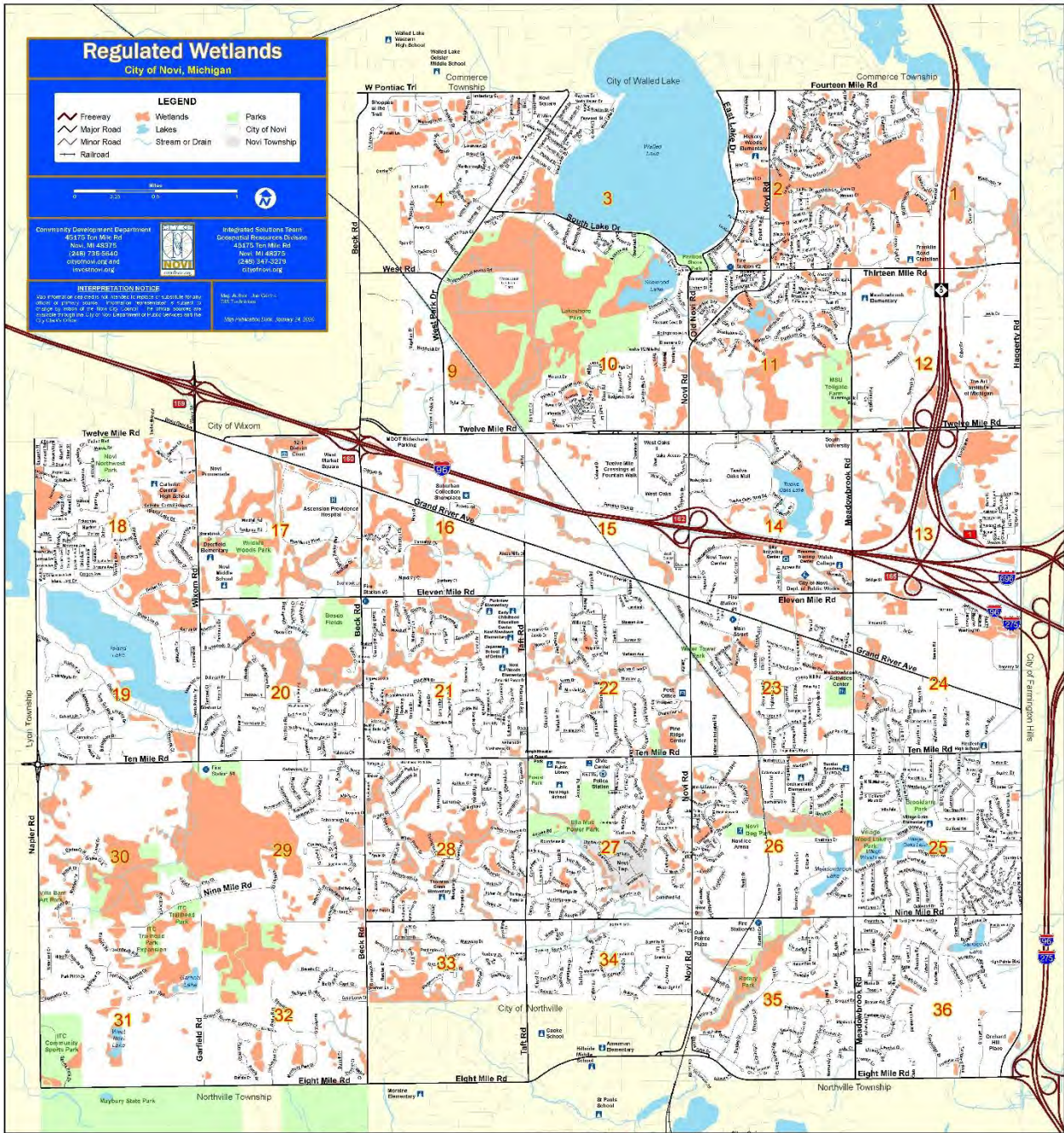
NATURAL FEATURES

When investigating parks and recreation within a community, it is critical to look at what natural features the community has available to them. These features include wetlands, woodlands, floodplains, and bodies of water such as rivers, streams, and lakes. Often, communities look to preserve and protect these features to ensure resources are protected and open space remains for future generations of residents.

WETLANDS

The City of Novi contains three large wetland areas with many small pockets of wetlands spread throughout the City. Oftentimes, the wetlands surround areas of residential development, creating pockets of greenspace throughout the City. The wetlands also follow streams, creeks, drains, and lakes. Areas of wetlands and woodlands can coincide with areas of parkland. The City of Novi has previously done this by overlapping many of the City parks with wetland areas. The first major area of wetlands is located in the southwest portion of the City near Ten Mile and Beck Road. These wetland spaces overlap with that of four of the City's conservation areas and many more of the City's developed park spaces. The other two large wetland areas within the City are both located within the northern portion of the City near Walled Lake. The first of those two areas is located southwest of Walled Lake. This wetland area overlaps with Lakeshore Park. The second wetland area is located to the east of Walled Lake and provides green space between much of the residential development on that side of the lake.

MAP 4 - NOVI WETLANDS MAP



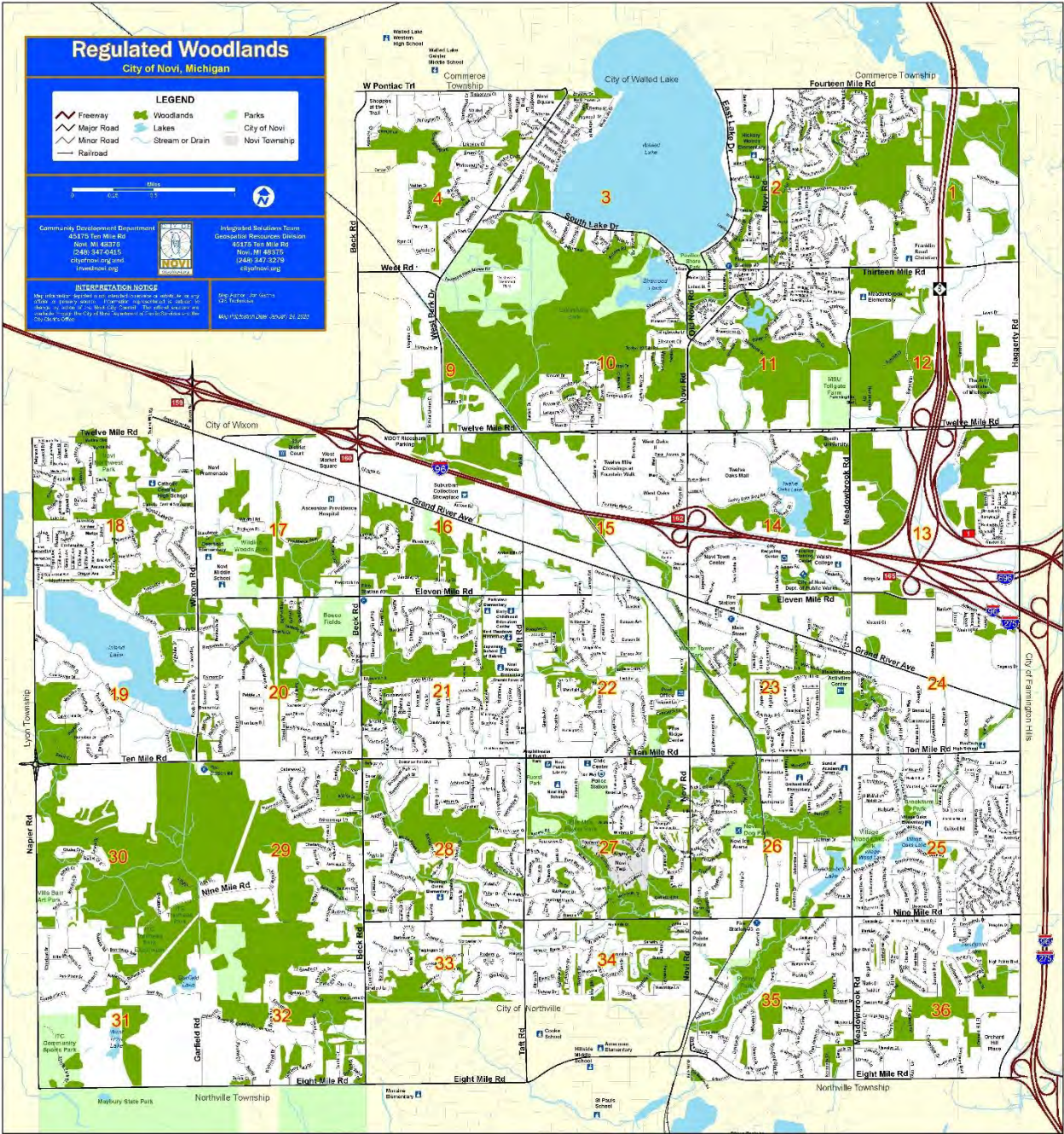
WOODLANDS

Similar to wetland areas within the City of Novi, woodlands are primarily spread throughout the City in small pockets with two larger areas of woodlands. Many of the woodland areas coincide with the areas of wetlands in the City and generally fill in sections between residential developments. The first larger area of woodlands within the City of Novi is within the southwest portion of the City near Ten Mile and Beck Road. This section of woodlands covers the four conservation areas within this region of the City and the developed park spaces in the area as well. The second larger section of woodlands covers portions of the northern section of the City. This area of woodlands covers portions of Lakeshore Park and in between the surrounding residential developments near Walled Lake.



ITC CORRIDOR TRAIL SURROUNDED BY WOODED LANDS

MAP 5 – NOVI WOODLANDS MAP



WALKABILITY

The 10-Minute Walk Initiative was created and led by The Trust for Public Land (TPL) in partnership with NRPA and the Urban Land Institute. This effort is dedicated to improving access to safe, quality parks and green spaces within a ten-minute walk from homes. The ability to walk to a park and recreation space from one's home ensures that equal access to park spaces is available, and transportation does not cause a barrier to access for individuals. Map XXX below displays the City of Novi parks and recreation spaces with a ten minute or .5-mile walking buffer around them. Many portions of the City of Novi are able to walk to a park or recreation space within that ten-minute buffer. There are a few clusters of residential areas that lack walkability access to parks. The first is located in the southern portion of the City near Beck and Nine Mile Road going both north and to the east. The second section is in the northern part of the City on the eastern side of Walled Lake. The City of Novi could look to acquire portions of land near these areas and develop them into park spaces to help improve the walkable access to parks and recreation spaces within the City. In doing so, the City is helping to remove barriers to use for residents of the City and, in turn, should help these recreation spaces get enjoyed more by residents.

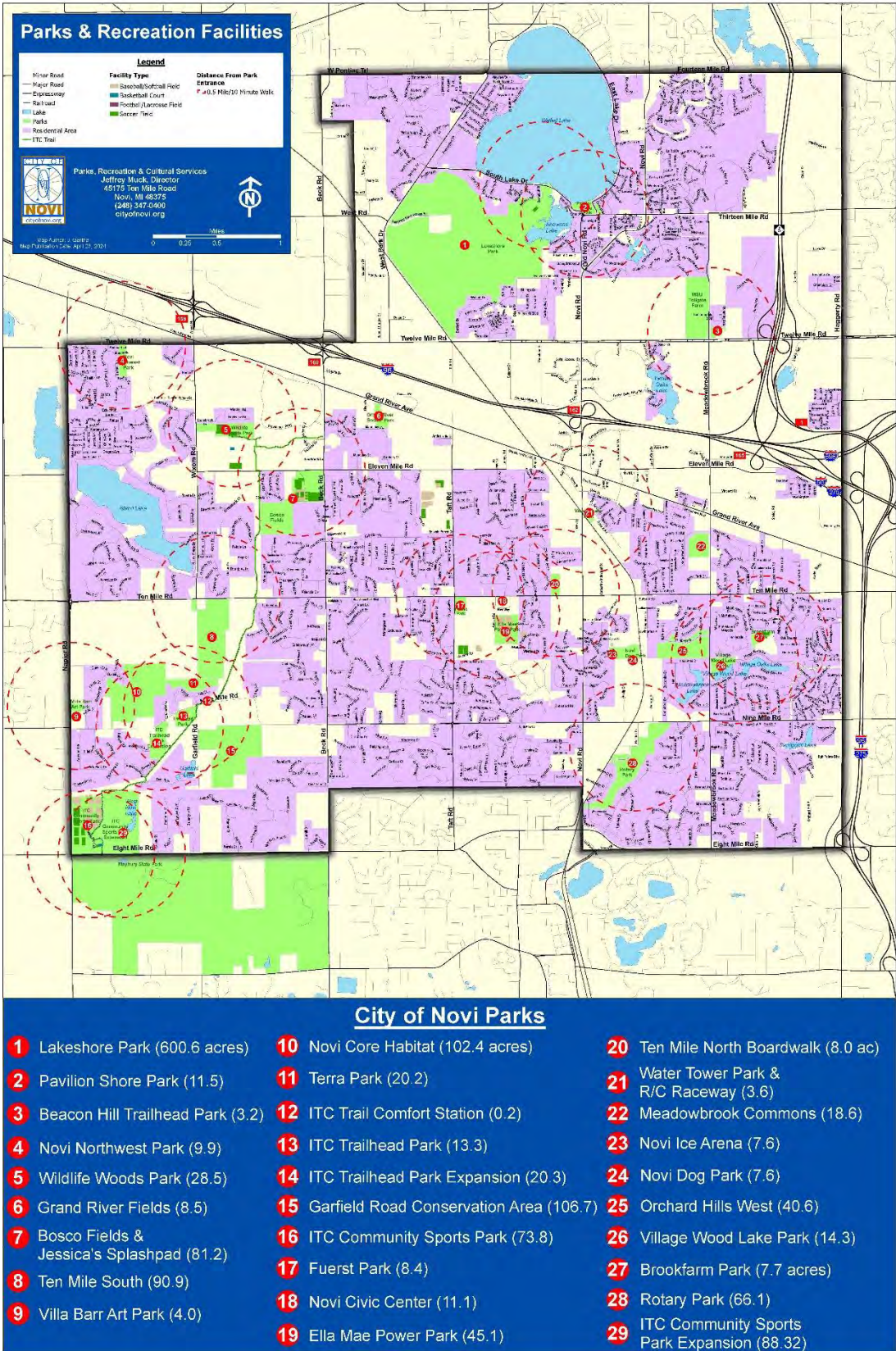


ITC CORRIDOR TRAIL SIGNAGE



ELLA MAE POWER PARK PLAY STRUCTURE

MAP 6 – NOVI WALKABILITY MAP





5 COMMUNITY INPUT

COMMUNITY INPUT

OVERVIEW

The City of Novi values strong community input as a foundation for making decisions about capital improvement projects. Public input allows community leaders to identify residents' needs and establish a framework for parks and recreation goals and objectives. In alignment with the Michigan Department of Natural Resources Guidelines for developing the Plan, the City provided several opportunities for public input, including online community surveys, open houses, and a 30-day public review period for feedback on the draft plan.

The Plan was available for public comment during the 30-day public review period held between October 2024 to November 2024, concluding with a public hearing on November 25th, 2024, and adoption by the Novi City Council on November 25th, 2024.

PUBLIC OPEN HOUSES

Three public open houses were held to gather community input, with each event tailored to engage various segments of the population, including older adults and other diverse community groups. The first event, the City Superhero Showcase, took place on June 6, 2024, at the Novi Civic Center, followed by two additional open house sessions at the Novi Civic Center on June 18th—one in the morning and one in the evening. At these events, consultants and City staff interacted with community members, seeking their feedback on Novi's parks and recreation system, including suggestions for improvements, additions, and what aspects of the Parks, Recreation, and Cultural Services Department they believe are working well.

The feedback gathered reflected a very positive outlook toward the Novi Park system. Among the most common suggestions was the desire for a community center that could provide additional spaces for expanded programs for all age groups, but specifically for the Older Adult Services. Participants also expressed interest in expanding youth team sports and enhancing park amenities, such as adding shade structures, lounge areas, and natural/earthen playgrounds.



CITY OF NOVI PUBLIC OPEN HOUSES

COMMUNITY INPUT SURVEY

In the spring of 2024, City Officials conducted online surveys to gather residents' input on parks and recreation in Novi. The survey process included three targeted surveys and one general survey. The targeted surveys, consisting of 4-5 questions each, were distributed during the public open houses and made available 24 hours after the events. Additionally, a general survey with five questions was conducted, attracting 386 participants. This general survey was conducted from July 9 to July 11. Respondents were asked about Novi's parks, recreational facilities, programs, and services. The surveys were administered through FlashVote, which directly reaches FlashVote participants, and were also promoted on the City of Novi's website, Facebook page, and through local flyers placed around the City. Key points of the survey are summarized below, and a complete tabulation of the response data developed for the report can be found in Appendix A.

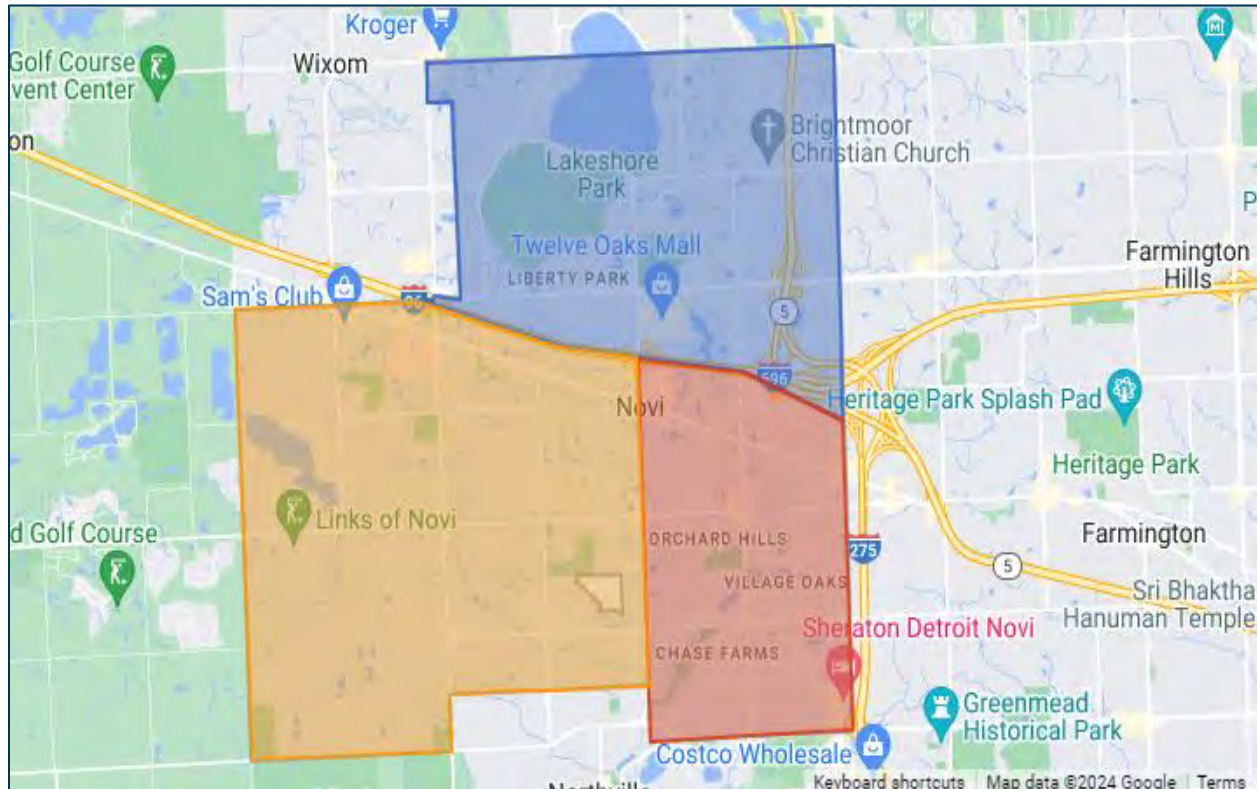


NOVI CIVIC CENTER

ABOUT THE RESPONDENTS

Of the 386 participants, 90% lived in the city of Novi. Map 6 below illustrates sections where respondents of the survey were from. Blue illustrates the north section of the City, orange is the southwest, and red is the southeast.

MAP 6 – SURVEY RESPONSE LOCATIONS



Every age cohort participated in the survey. The responses below are from the highest percentage to the lowest percentage.

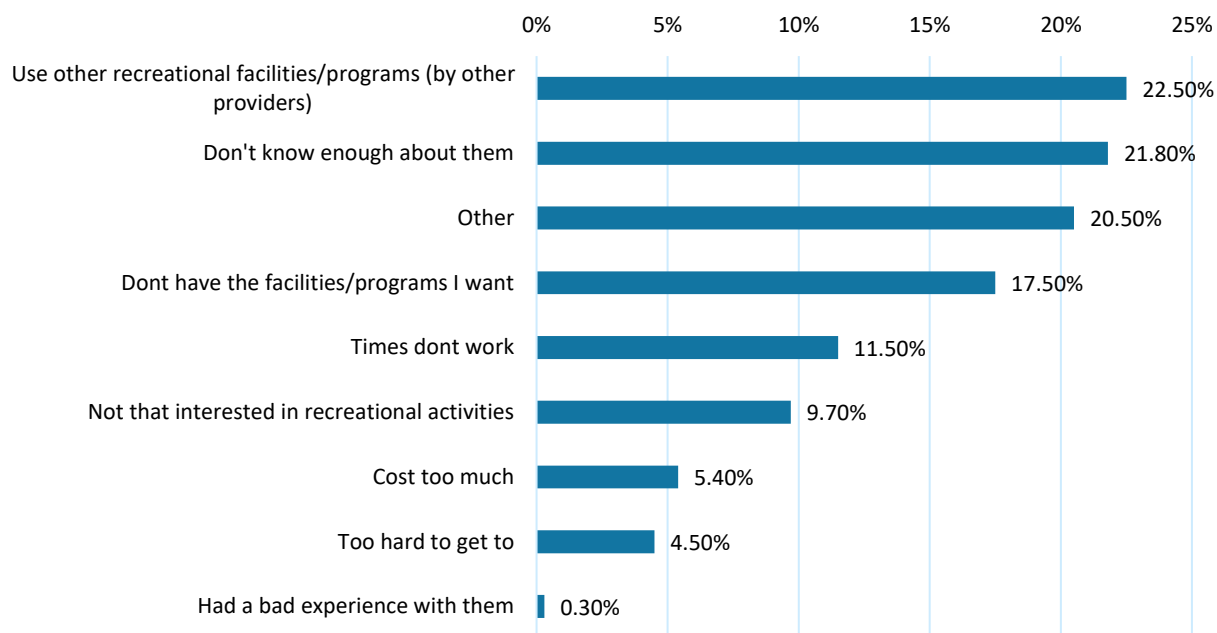
- Age 61+: 45%
- Age 46-60: 36%
- Age 31-45: 18%
- Age 30 and under: 1%

PARK VISITATION

Respondents were asked what, if anything, prevented them from using existing City of Novi parks, recreational facilities, programs, and services or from using them more.

The top three responses were: "Use other recreational facilities/programs (provided by other organizations)," "Don't know enough about them," and "Other." A full list of responses is below:

FIGURE 2 – FULL SURVEY QUESTION RESPONSE LIST

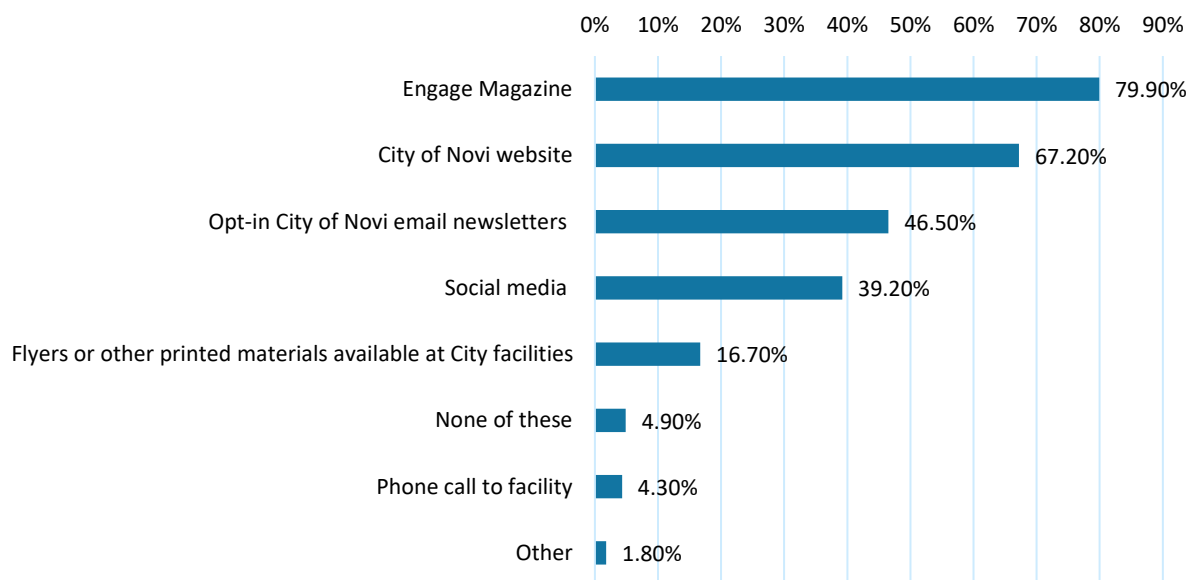


OUTREACH

Respondents were asked how they received information about City of Novi parks, recreational facilities, programs, services, or events within the last few years.

The top three responses were: “Engage Magazine,” “City of Novi website,” and “Opt-in City of Novi email newsletters (like e-Engage). A full list of responses is below:

FIGURE 3 - FULL SURVEY QUESTION RESPONSE LIST



ADDITIONAL SERVICES

Respondents were asked if there were any new park amenities, recreational facilities, programs, or services they would want to see the city of Novi provide.

Of the respondents, 20% answered "No," 33% were "Not Sure," and 46% selected "Yes," providing additional written feedback. These written responses have been visually represented in the form of a word cloud, highlighting common themes and key suggestions from the participants.

FIGURE 4 – SURVEY QUESTION WORD CLOUD





6 GOALS AND OBJECTIVES

GOALS AND OBJECTIVES

INTRODUCTION

The mission, vision, and values of the City of Novi's Parks, Recreation, and Cultural Services Department (PRCS) were thoughtfully developed based on the agency's purpose to serve the community's recreational and cultural needs. Rooted in the City's commitment to enhancing the quality of life for its residents, the agency's leadership engaged in a collaborative process that involved community input, internal evaluations, and alignment with broader citywide goals. The mission and vision statement for the Parks, Recreation, and Cultural Services Department are:

Mission: Provide exceptional park, recreational and cultural opportunities that are diverse and enhance lives.

Vision: The City of Novi aims to lead in innovation, excellence, and outstanding service through a culture of trust, respect, and continuous improvement.

Along with a mission and vision statement, the City of Novi's Parks, Recreation, and Cultural Services Department is committed to the following values. Values reflect what a community stands for, shaping its identity and fostering a sense of unity among residents.

Team - We work together to achieve collective success. Being a team is central to our organization. We value diversity, inclusivity, and respect for everyone's contributions. By recognizing each member's unique skills and perspectives, we foster a culture of collaboration, trust, and mutual respect, encouraging everyone to do their best and feel a sense of belonging.

Commitment - We are dedicated and passionate about delivering the highest quality of service. Commitment is key to our culture. We focus on collaboration, innovation, and being forward-thinking. We encourage creativity, adaptability, and resilience to achieve our goals. With a positive mindset, we explore options and overcome obstacles, fostering optimism, determination, and a can-do attitude for our success and growth.

Innovation - We are driven by a relentless curiosity to explore new possibilities. Innovation is at our core. We embrace new ideas and technologies to tackle challenges and improve services. Through collaboration and continuous improvement, we find efficient solutions to meet our failures to drive positive change and enhance residents' quality of life.

Trust - We are transparent, clear, and involve citizens in our community. Trust reflects our commitment to transparency with the public about policies, actions, and outcomes. We build trust by ensuring citizens understand government operations, decision-making, and use of taxpayer resources. By encouraging public participation, we give citizens the chance to hold the government accountable and actively engage in democracy.

Taken together, these values, vision, and mission statements create a culture that encourages collaboration, dedication, progress, and trustworthy relationships. The goals and objectives written for this plan also takes into account the demographic characteristics of the City of Novi, its physical and environmental characteristics and the valuable input from the community.

GOALS AND OBJECTIVES

Goals represent the broadest level of planning, serving as general statements that outline what the community hopes to achieve over the lifespan of the Plan. Objectives provide a more focused approach by detailing how these goals will be accomplished. The action program is the most specific planning component, outlining the projects and initiatives to be pursued over the next five years. This program may include organizational improvements, staffing needs, programming initiatives, public information efforts, and operational and maintenance tasks. The following goals and objectives have been developed by the City of Novi's Parks, Recreation, and Cultural Services Department, reflecting the community's unique characteristics, feedback from residents, and input from staff and the City Council. The following list includes three (3) core goals developed by City Council: Operate, Build, and Invest. Each core goal contains a list of objectives developed both by the Novi City Council and by PRCS staff to align with the City's strategic priorities, mission and vision. Objectives specifically developed by City Council that directly address PRCS initiatives are identified by (CC):

OPERATE a World-Class, Sustainable Local Government

1. Increase engagement and outreach efforts with Novi's diverse populations (CC).
2. Utilize the most effective methods of communication to engage all segments of the community.
3. Grow volunteer participation for City programs and initiatives, particularly within the older adult community.
4. Continue to make improvements to parks and facilities addressing accessibility needs (including sensory-inclusive facilities and amenities) in order to meet all current ADA Compliance Standards. Universal design and access will be considered in project planning.
5. Utilize the most effective marketing strategies to communicate with an aging population.
6. Capitalize on park space to bring nature recreation and education programming to residents.
7. Enhance arts & culture within the City through additional classes, events, & park displays.
8. Continually explore new technology to increase operational efficiency.
9. Explore opportunities for partnerships with the Novi Community School District to develop operational space (performing arts, aquatics, gyms).

BUILD a Desirable and Vibrant Community for Residents and Businesses

1. Build a Community Facility that serves and connects all our residents (CC).
2. Develop walkable 'Pocket Parks' in areas of the city where there are no walkable parks (CC).
3. Pursue a partnership with Northville for a Trail connection from Novi-Northville, possibly near the railroad bridge on 8 mile (CC).
4. Work with neighboring communities to complete connections through Novi to local trail systems (Airline/Huron Valley, Hines Drive, I-275) w to make Novi businesses an appealing rest stop for cyclists using the trails (CC).

5. Increase access and awareness to available City resources through a robust marketing program that understands the community and connects with the appropriate audiences.
6. Actively grow program participation through increased outreach and effective marketing campaigns.
7. Regularly evaluate park amenities to continually look for new ways to improve park infrastructure.
8. Monitor and pursue properties to acquire land to put into park use, and for conservation purposes.
9. Leverage grant funding opportunities to facilitate park improvements and align with the capital improvement plan schedule.

INVEST Properly in Being a Safe Community for All

1. Complete CAPRA re-accreditation and communicate its meaning and benefits to the community.
2. Complete a community needs assessment to properly allocate resources towards improvements and programming where the community needs it most.
3. Support aging in place for older adults within the community by providing opportunities for fitness, wellness, life-long learning, social enrichment, and support services.
4. Provide access for emergency vehicles in parks and trail systems.
5. Evaluate, update, and install wayfinding and mile marker signage on all City-owned trails.
6. Maintain park maintenance staff certification records for Playground Safety Inspection and other necessary certificates.
7. Improve parks and facility amenities for both the public and staff, including improvements for park shelters and office environments.

ACTION PLAN

The following action plan was developed based upon information gathered from public input, demographic data, land use trends and efforts of adjacent communities. Each proposed action item is reflected within the City's Capital Improvement plan to clearly identify the target year of the project, project location, a description, an estimated range of cost to complete the project, and its revenue source. The plan covers improvements to be completed over the next five years.

These projects may be funded through grant sources such as those provided through the Michigan Department of Natural Resources (MDNR) Land and Water Conservation Fund, Michigan Natural Resources Trust Fund, Recreation Passport Grants, Waterways Program Grants, Michigan Habitat Improvement Fund Program Grants, Invasive Species Grant Program, or Wildlife Habitat Grant Program. There may also be grants available through private corporations, non-profit organizations, and other state and federal agencies.

TABLE 9 – CAPITAL IMPROVEMENT PLAN SCHEDULE

Target Year	Project Location	Project Description	Estimated Costs	Revenue Source
24-25	Ella Mae Power Park	Reconstruction of asphalt pathways throughout Ella Mae Power Park. Replacement of some concrete near the pavilion is included along with the additional drainage structures to address issues with standing water.	\$380,000	Parks, Recreation & Cultural Services Fund
24-25	Meadowbrook Commons	Installation of four pickleball courts on un-used space at Meadowbrook Commons for community use. The courts will also serve as an additional amenity for Meadowbrook Commons residents.	\$593,370	Senior Housing Fund
24-25	Novi Civic Center	Enhancing the stage lighting and replacing the stage.	\$116,120	Parks, Recreation, & Cultural Services Fund
25-26	Ella Mae Power Park	Reconstruction of asphalt pathways throughout Ella Mae Power Park. Replacement of some concrete near the pavilion is included along with the addition of drainage structures to address issues with standing water.	\$380,000	Parks, Recreation, & Cultural Services Fund
26-27	Wildlife Woods Park	Adding on pickleball courts to the existing courts, parking lot expansion to accommodate an additional 40 vehicles, and adding stairs as an alternate connection from the parking lot to the pavilion.	\$600,200	Parks, Recreation, & Cultural Services Fund
26-27	Bosco Fields	Paving the entrance/access roads and parking lot with hot-mix asphalt (HMA). The parking lot would accommodate 248 vehicles plus 9 ADA accessible spaces. Additionally, existing pathways around the fields would be paved with concrete.	\$1,468,200	Parks, Recreation, & Cultural Services Fund

Target Year	Project Location	Project Description	Estimated Costs	Revenue Source
26-27	Ella Mae Power Park	Rehabilitation of the parking lot. Proposed fix is 1.5" mill and resurface with 15% of the parking lot area requiring base repairs. The size of the dumpster pad in the southwest corner of the lot would be increased, removing three parking spaces.	\$290,270	Parks, Recreation, & Cultural Services Fund
26-27	ITC Community Sports Park	Renovation plans expected to incorporate a variety of elements including, but not limited to, soccer fields, baseball/softball diamonds, tennis/pickleball courts, playgrounds, and redesigned parking and pathways.	\$10,000,000	General Fund
26-27	ITC Park & Rotary Park	Crack seal and fill, as well as re-painting, are required approximately every 3 to 5 years on tennis courts.	\$79,930	Parks, Recreation, & Cultural Services Fund
27-28	ITC Trail & Bosco Fields	Construction of a 10-foot wide asphalt pathway and 14-foot wide boardwalk to serve as a connection between the ITC Trail and Bosco Fields	\$1,374,490	Parks, Recreation, & Cultural Services Fund
27-28	Wildlife Woods Park	Installation of an underdrain in the field west of the parking lot to allow the field to be used for sports. A new pavilion is also proposed at the south end of the field.	\$630,790	Parks, Recreation, & Cultural Services Fund
27-28	Rotary Park	Replacement of the parking lot in-kind and maintained on an annual basis.	\$167,930	Parks, Recreation, & Cultural Services Fund
28-29	Novi Cemetery	Installation of approximately 987 feet of 4-foot high black Washington aluminum fence.	\$72,730	Parks, Recreation, & Cultural Services Fund
28-29	Water Tower Park	Repaving Area 1 of the Remote Control (RC) Raceway under the Novi Water Tower.	\$161,700	Parks, Recreation, & Cultural Services Fund
28-29	ITC Park & Rotary Park	Reconstruction of 4 tennis courts: 2 located at Rotary Park and 2 located at ITC Park.	\$350,000	Parks, Recreation, & Cultural Services Fund



7

PLANNING PROCESS

PLANNING PROCESS

PROCESS

To ensure ongoing high-quality recreational opportunities for its residents, the City of Novi has created this Strategic Community Recreation & Master Park Plan to direct the development of its community parks, recreational facilities, and programming over the next five years. This plan represents the latest initiative by City officials to set recreational goals and objectives for the community. Additionally, it makes the City eligible for grants from the Michigan Department of Natural Resources, aiding in achieving its recreational objectives.

The City of Novi partnered with Spicer Group to assist in completing the Strategic Parks and Recreation Master Plan. Throughout the development process, the consultant collaborated closely with City staff and the Parks and Recreation Department.

During the development of this plan, three opportunities for input, participation, and review were provided.

- Online community surveys:
 - General Survey – July 9th, 2024 – July 11th, 2024
 - Targeted Survey – July 6th, 2024; (2) July 18th, 2024
- Open Houses and Community Events:
 - Superhero Showcase – July 6th, 2024
 - Open House – (2) July 18th, 2024
- 30-day review period and a public hearing held on November 25th, 2024

Using the existing information and public input gathered on the dates mentioned above, the City established its parks and recreation goals and objectives for the next five years. The City then updated its action plan to achieve these goals and objectives.

REVIEW AND ADOPTION

The consultant completed the draft of the Strategic Parks and Recreation Master Plan in September. The document was made available for public review both online and at the City of Novi Civic Center for 33 days, from October 18th to November 20th, 2024. This review period was promoted through a local press release, the city's website, and the Recreation Department's Facebook page. The final opportunity for community input was at a public meeting on November 25, 2024, at 7:00 p.m. at the Novi Civic Center, 45175 Ten Mile Road, Novi, Michigan 48375. On the same day, the Novi City Council passed a resolution recommending the adoption of the plan.

On November 25, 2024, the Novi City Council adopted the resolution for the Strategic Parks and Recreation Master Plan. Copies of the advertisement and resolution can be found in Appendix C. In January 2025, copies of this plan were submitted to SEMCOG, the Oakland County Planning Commission, and the Michigan Department of Natural Resources (MDNR).



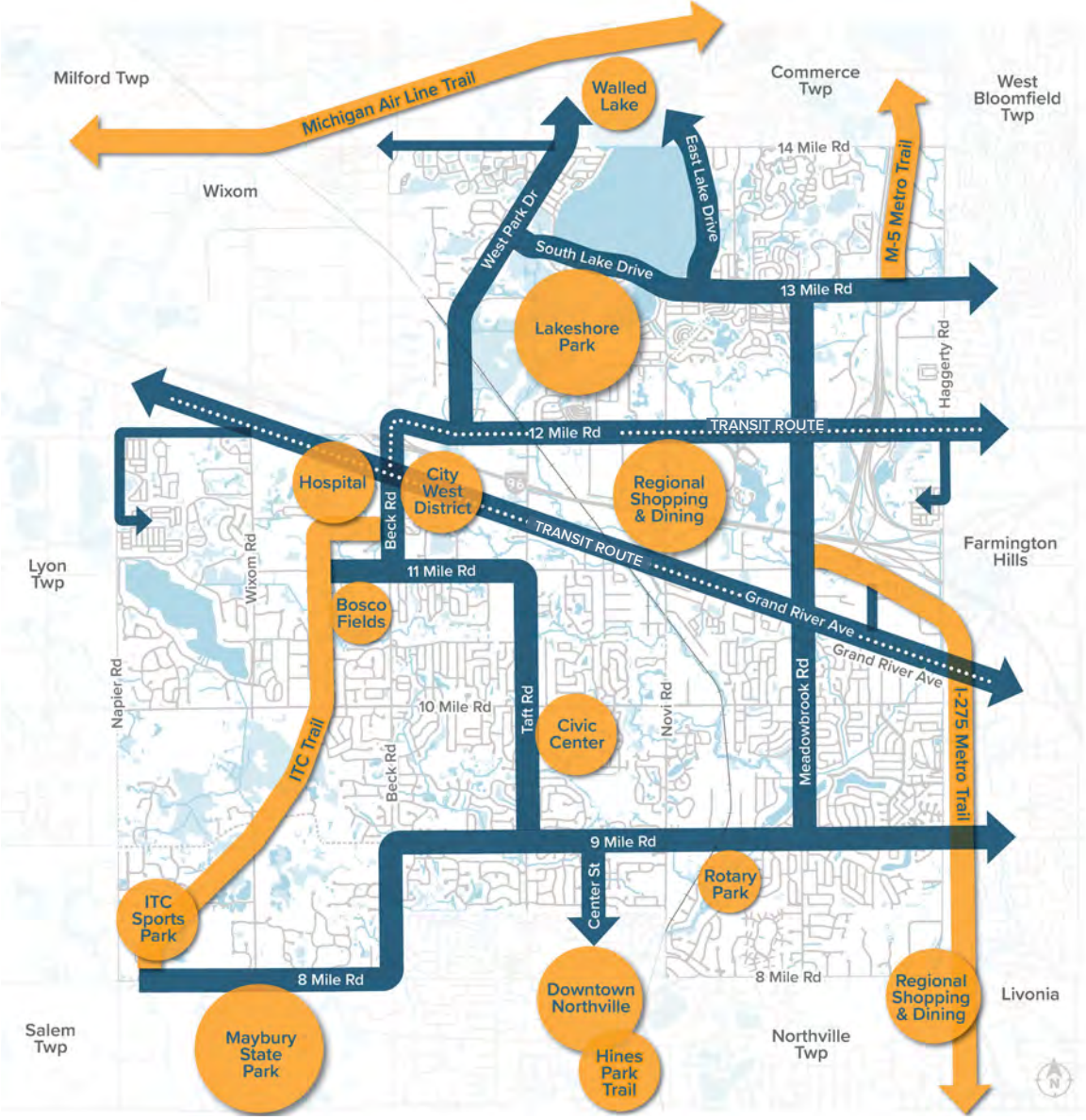
8 APPENDIX



Active Mobility Plan 2023



Adopted March 18, 2024



Near-Term Network

The Near-Term Network is a set of projects within public areas, requiring minimal road changes, aimed at creating a continuous network for reaching key destinations and trails in the city. It emphasizes walking and biking using existing facilities and consists of three main components:



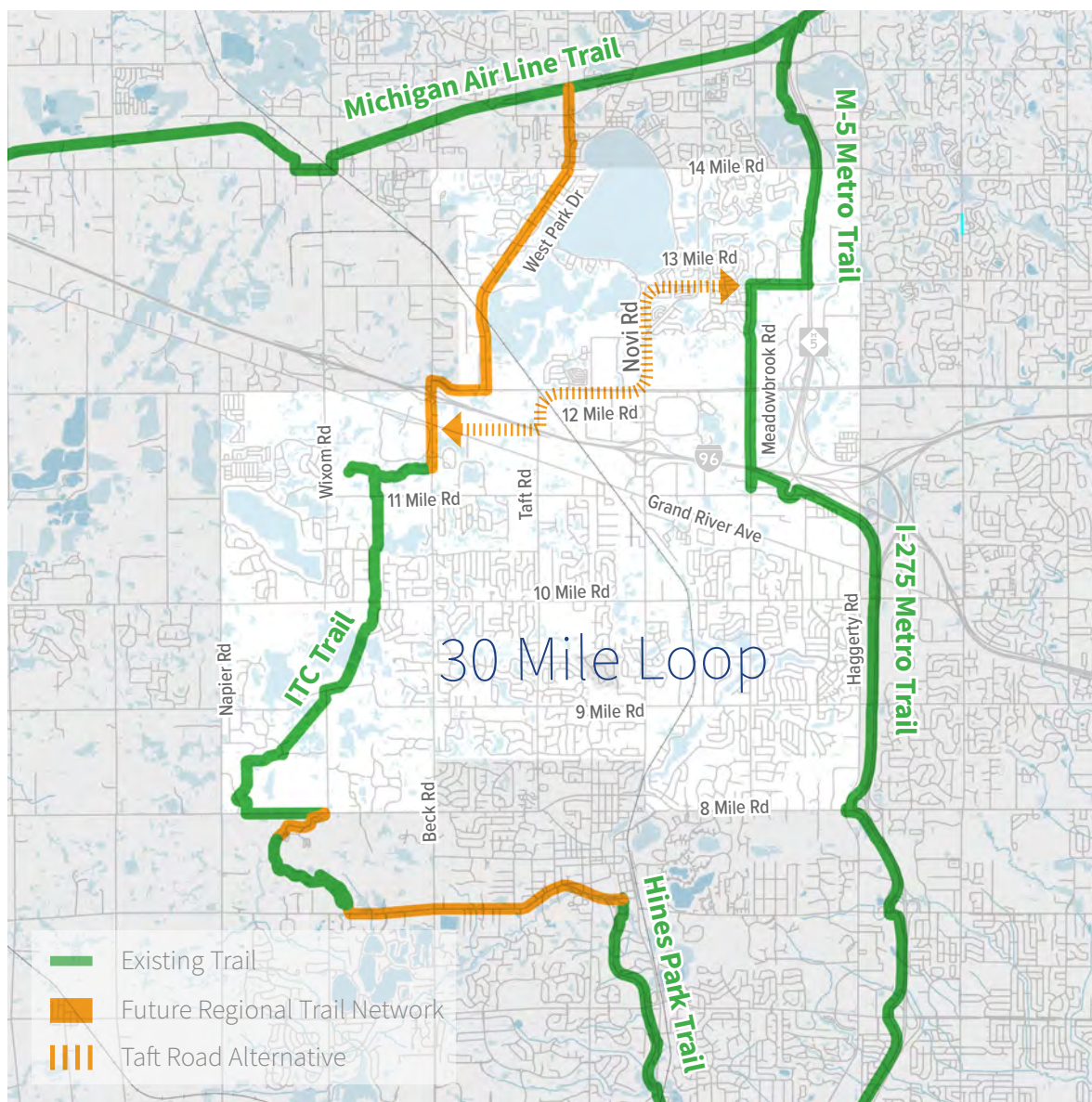
Neighborhood Greenway Network
A seamless walking and biking path with added features for a better experience.



Connecting to Transit
Making it safe and easy for pedestrians and cyclists to reach new transit routes.

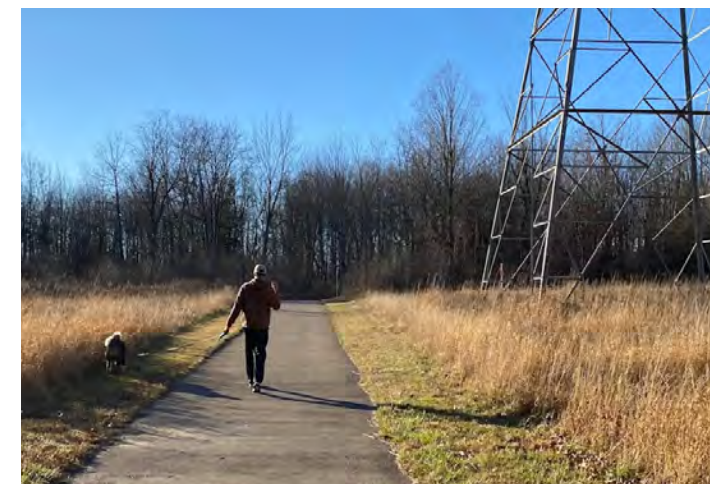


Improved Access to Shopping and Dining
Creating a friendly environment that lets people easily walk or bike to businesses from the street.



Regional Trail Network

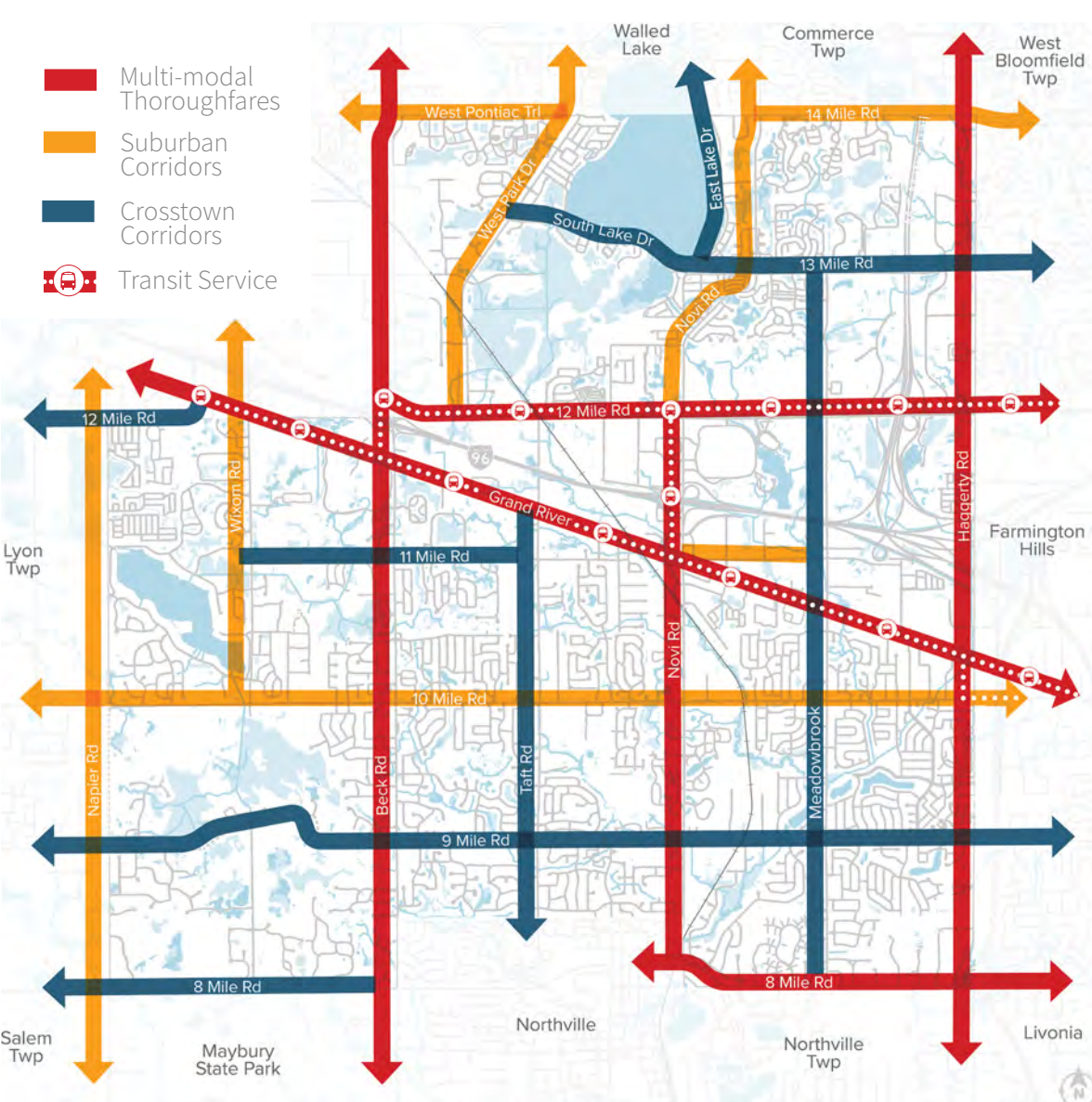
The Active Mobility Plan aims to connect Novi to the broader regional trail network, potentially creating a 30-mile trail loop. These connections include creating a trail link across the I-96 interchange at Beck Road with Wixom, closing sidepath gaps along 12 Mile Road and West Park Drive to West Pontiac Trail, and collaborating with Walled Lake to connect to the Michigan Air Line Trail. Additionally, coordination with Maybury State Park and support for pathway connections along 7 Mile Road to Hines Park Trail are emphasized, along with actively seeking opportunities for non-motorized connections across I-96 at Taft Road with future development.



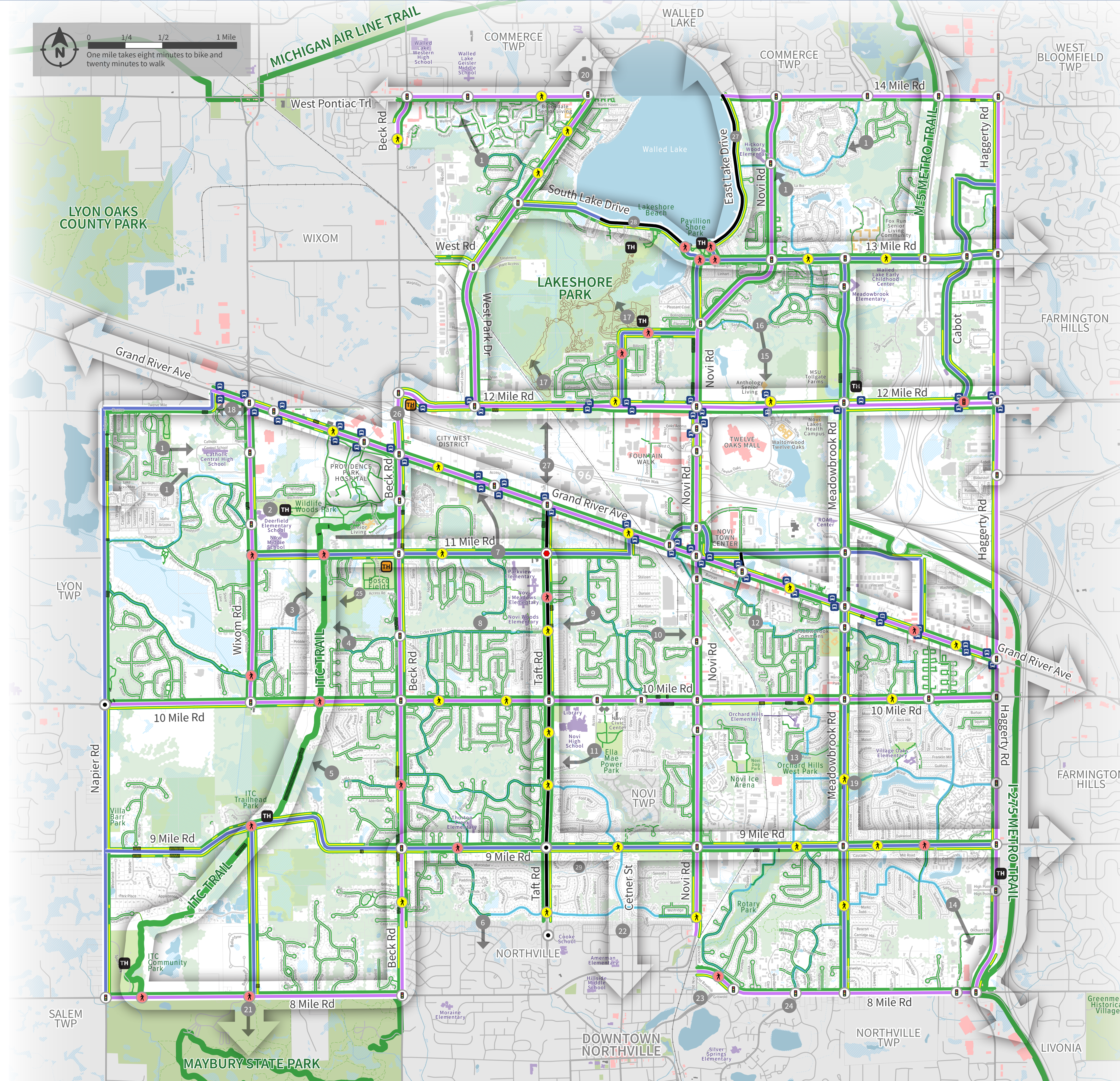
Major Corridor Classifications

Major Roadway Classifications help determine the features to enhance active mobility on different road types in Novi. They serve as a framework for applying current best practices to enhance safety and promote bicycle and pedestrian mobility. These classifications should be consulted when a road is undergoing reconstruction or widening to ensure that it operates as a complete street.

- Crosstown Corridors**
These roads have moderate speeds and traffic volumes, primarily providing access to residential areas.
- Suburban Corridors**
These roads are characterized by higher-speed and greater traffic volumes. They serve as access routes to a combination of local commercial and residential areas.
- Multi-Modal Thoroughfares**
These are the highest-speed and highest-volume roads within the city, primarily serving as through routes and providing access to regional commercial areas.



- Legend:**
- Signalized Intersection
 - Stop-controlled Intersection
 - Roundabout
 - Mid-block Crosswalk
 - Upgrade Existing Crosswalk
 - New Crosswalk Location
 - Existing Trailheads
 - Proposed Trailheads
 - SMART Transit Stops
 - Sidewalks and Pathways
 - Regional Trails
 - Mountain Bike Trails
 - Hiking/Natural Trails
 - Bike Lanes
 - Boardwalk
 - Sidewalk and Pathway Gaps
 - Proposed Local Road Routes
 - Proposed Bike Lane
 - Proposed Separated Bike Lane or Shared Use Path
 - Near-Term Network
 - Retail and Dining
 - Schools and Libraries
 - Senior Living
 - Government Buildings
 - Wetlands
 - Lakes, Rivers and Streams
 - Woodlands
 - Parks



Map Notes:

- Provide direct pathway connections between adjacent neighborhoods and school.
- Trail ends abruptly into parking lots at Deerfield Elementary and Wildlife Wood Park. Continue trail so it links into the City's pathway network.
- Explore neighborhood nature trail to ITC Trail from Woodworth Drive through community open space.
- Connect neighborhood to ITC Trail from Sandpiper Court.
- Connect neighborhood to ITC Trail from Cheltenham Drive or Heartwood Street.
- Connect adjacent neighborhoods between Galway Drive and Coldspring Drive.
- Explore options for a direct pathway connection to anticipated City West district from 11 Mile Road.
- Connect adjacent neighborhood between Arcadia Drive and Cider Mill Road.
- Formalize pathway connection between Taft Road and Kerri Court.
- Add pathway through city owned parcel between Thatcher Drive and Novi Road.
- Extend existing pathway all the way to Taft Road from Ella Mae Power Park.
- Add pathway between Fountainpark Drive and Highland Drive.
- Explore optional pathway through city owned parcel between Chattman St/ Balcombe Dr to Malott Drive.
- Explore options for a direct pathway connection between neighborhoods and the commercial area at Eight Mile Road and Haggerty Road.
- Explore options for a direct pathway connection to Twelve Mile Road from Sandstone Drive and Steinbeck Glen.
- Extend pathway between Sandstone Drive and Steinbeck Glen.
- Add pathway connection to Lakeshore Park Mountain Bike Trails from W 12 Mile Road and improve access from 12 1/2 Mile Road.
- Extend sidewalk from 12 Mile Road to Wixom Road.
- Add sidewalk connection from Meadowbrook to existing path in Village Wood Lake Park as part of upcoming CIP project.
- Collaborate with Walled Lake to provide a trail connection to the Michigan Air Line Trail from Pontiac Trail and W Park.
- Coordinate with Maybury State Park to provide trail connection at park entrance at 8 Mile Road.
- Coordinate with the City of Northville to provide a safe route to Amerman Elementary and Downtown Northville.
- Multi-jurisdictional coordination is required for Griswold Road, Old Novi Road, Baseline Road, and 8 Mile Road due to the complexity of transportation issues involving different jurisdictions and to plan for future connections to Northville's Riverwalk.
- Coordinate with Northville Township to provide a connection to Legacy Park on 7 Mile Road following Silver Spring Drive.
- Add pathway connection between ITC Trail and Bosco Fields.
- Establish a trail connection across the I-96 interchange at Beck Road with the City of Wixom.
- Recognizing the strong desire to establish a non-motorized connection across I-96 at Taft Road, linking the northern and southern parts of the city, it is recommended that the city actively seek opportunities for its construction as City West develops.
- A traffic study is recommended for East Lake Drive and South Lake Drive to analyze traffic patterns, safety issues, and necessary infrastructure changes for bicyclists and pedestrians.
- For the south side of Nine Mile Road, some sections of the proposed sidepaths were previously deferred.

