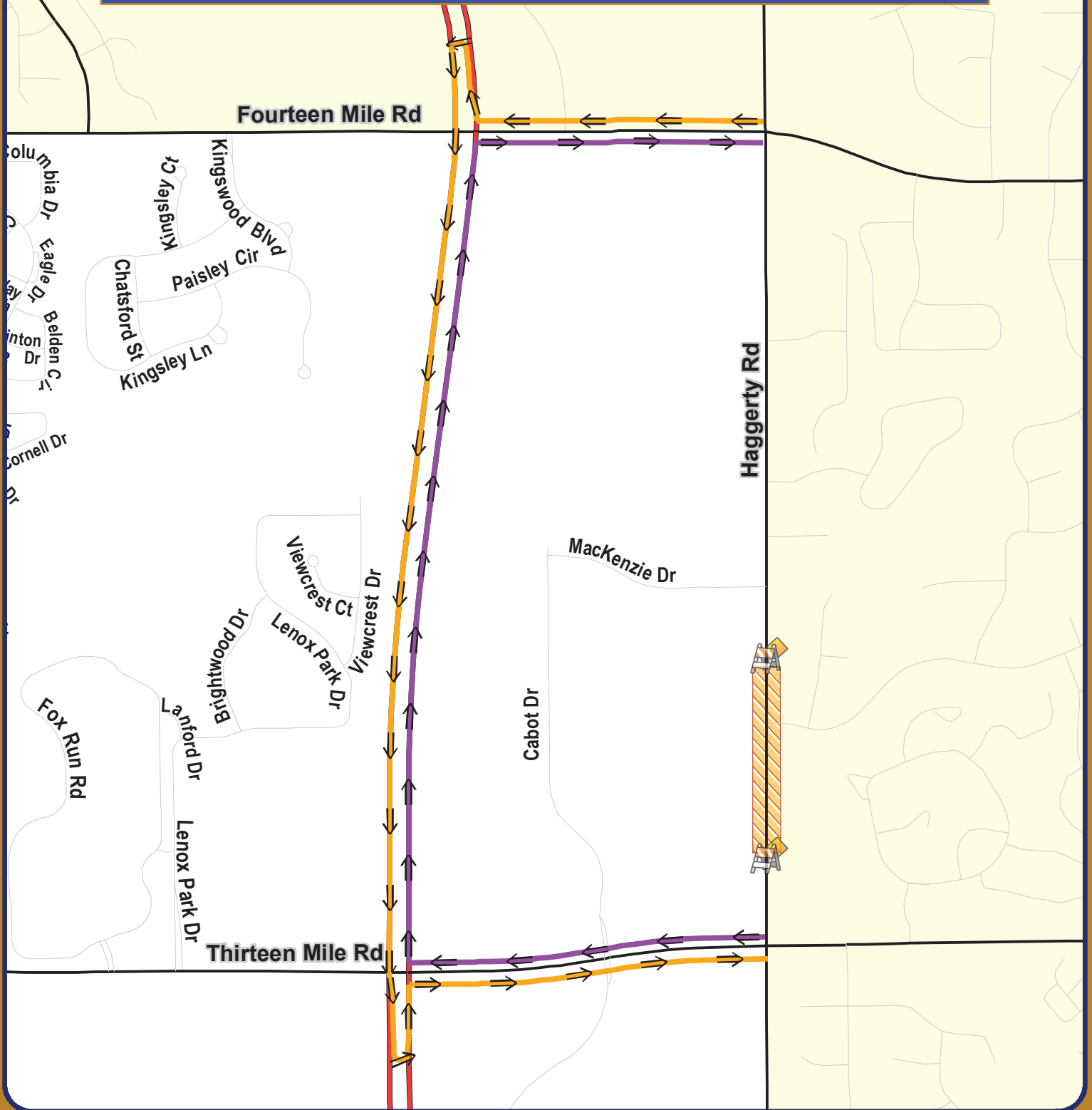


Seeley Drain Culvert Replacement Designated Detour

City of Novi and City of Farmington Hills



Map Author: Keri Blough
 Date: April 18, 2019
 Project: Haggerty Rd Detour
 Version #: 1.0

Amended By:
 Date:
 Department:

MAP INTERPRETATION NOTICE






Map information depicted is not intended to replace or substitute for any official or primary source. This map was intended to meet National Map Accuracy Standards and use the most recent, accurate sources available to the people of the City of Novi. Boundary measurements and area calculations are approximate and should not be construed as survey measurements performed by a licensed Michigan Surveyor as defined in Michigan Public Act 332 of 1970 as amended. Please contact the City GIS Manager to confirm source and accuracy information related to this map.

Haggerty Rd will be closed at the culvert locations throughout the duration of the project. Residential and commercial streets north of the culverts will be accessed from 14 Mile Road and the streets south of the culverts will be accessible from 13 Mile Road.

Designated detour for northbound Haggerty Rd: 13 Mile Rd, west to M-5, north to 14 Mile Rd and east to Haggerty Rd.

Designated detour for southbound Haggerty Rd: 14 Mile Rd, west to M-5, south to 13 Mile Rd and east to Haggerty Rd.

Map Legend

-  Road Closure
-  Northbound Detour
-  Southbound Detour
-  Road CLOSED
-  Road OPEN



City of Novi

Engineering Division
 Department of Public Services
 26300 Lee BeGole Drive
 Novi, MI 48375
cityofnovi.org



1 inch = 950 feet

