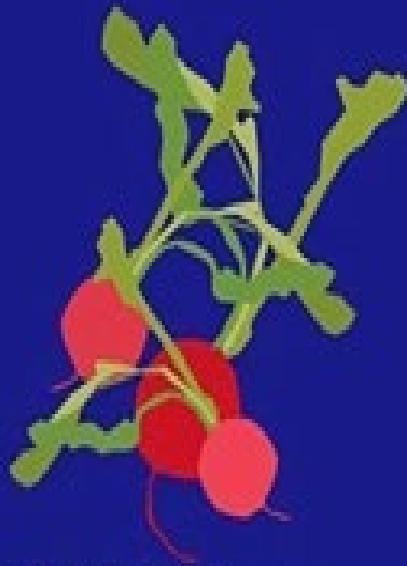


# VEGETABLES THAT GROW IN LESS THAN 2 MONTHS



**RADISHES** (most varieties such as: French Breakfast, Sora, Purple Plum, Cherry Belle, Pink Beauty, etc.)

**DAYS TO HARVEST:**  
25-35



\* **KALE** (most varieties such as: Red Russian, Lacinato, Blue Scotch, etc.)

**DAYS TO HARVEST:** 30 (baby) -  
60 (full)



**TOKYO  
MARKET  
TURNIPS**

**DAYS TO  
HARVEST:** 30-35



\* **ARUGULA**

**DAYS TO HARVEST:**  
25 (baby) - 40 (full)



\* **SPINACH**

**DAYS TO  
HARVEST:** 40-50



\* **LETTUCE**

**DAYS TO HARVEST:**  
28 (baby) - 50 (full)

\* = "Cut and Come Again Vegetable": can be harvested 3+ times every 1-2 weeks

*yiza*