

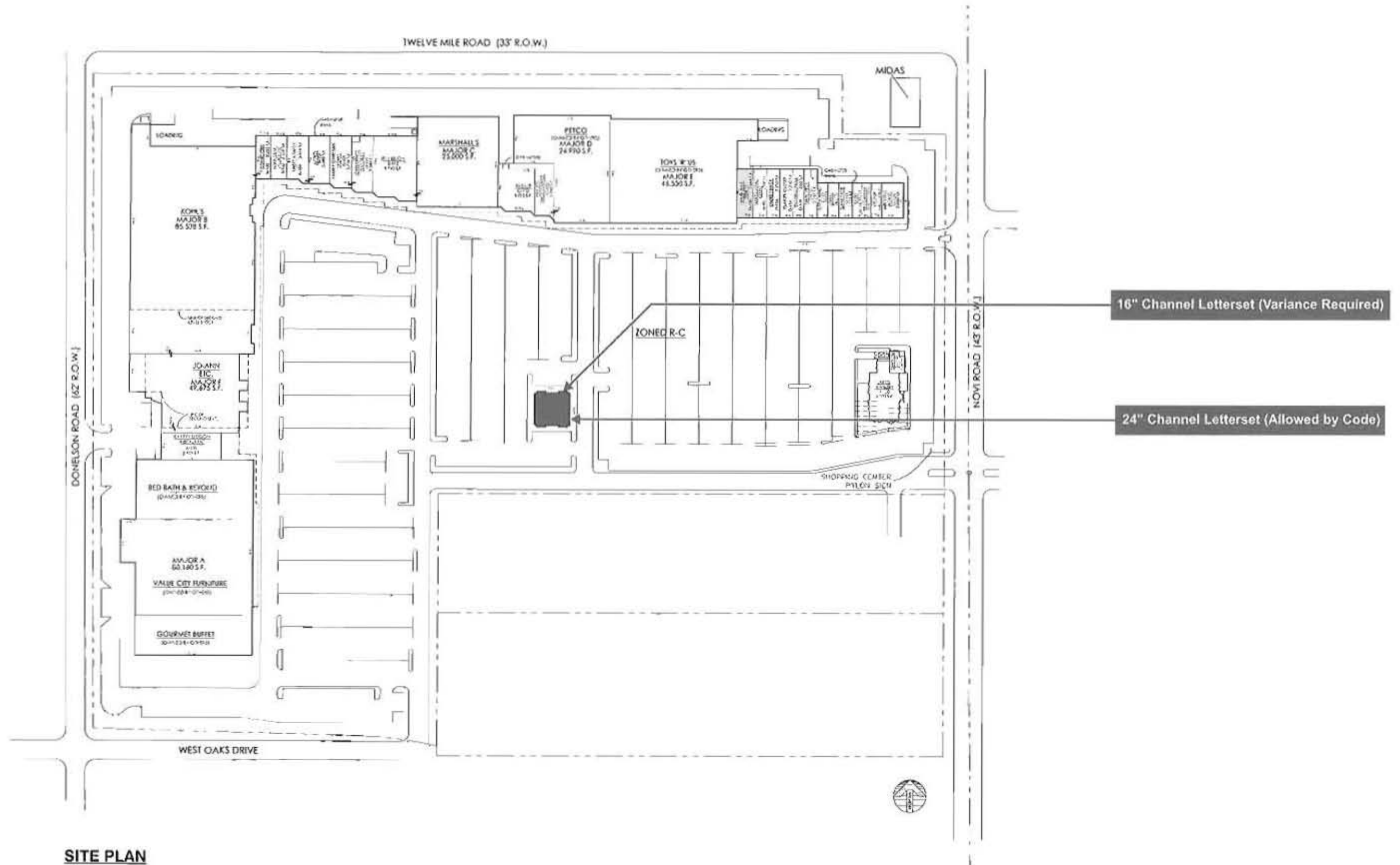


## Variance Submittal

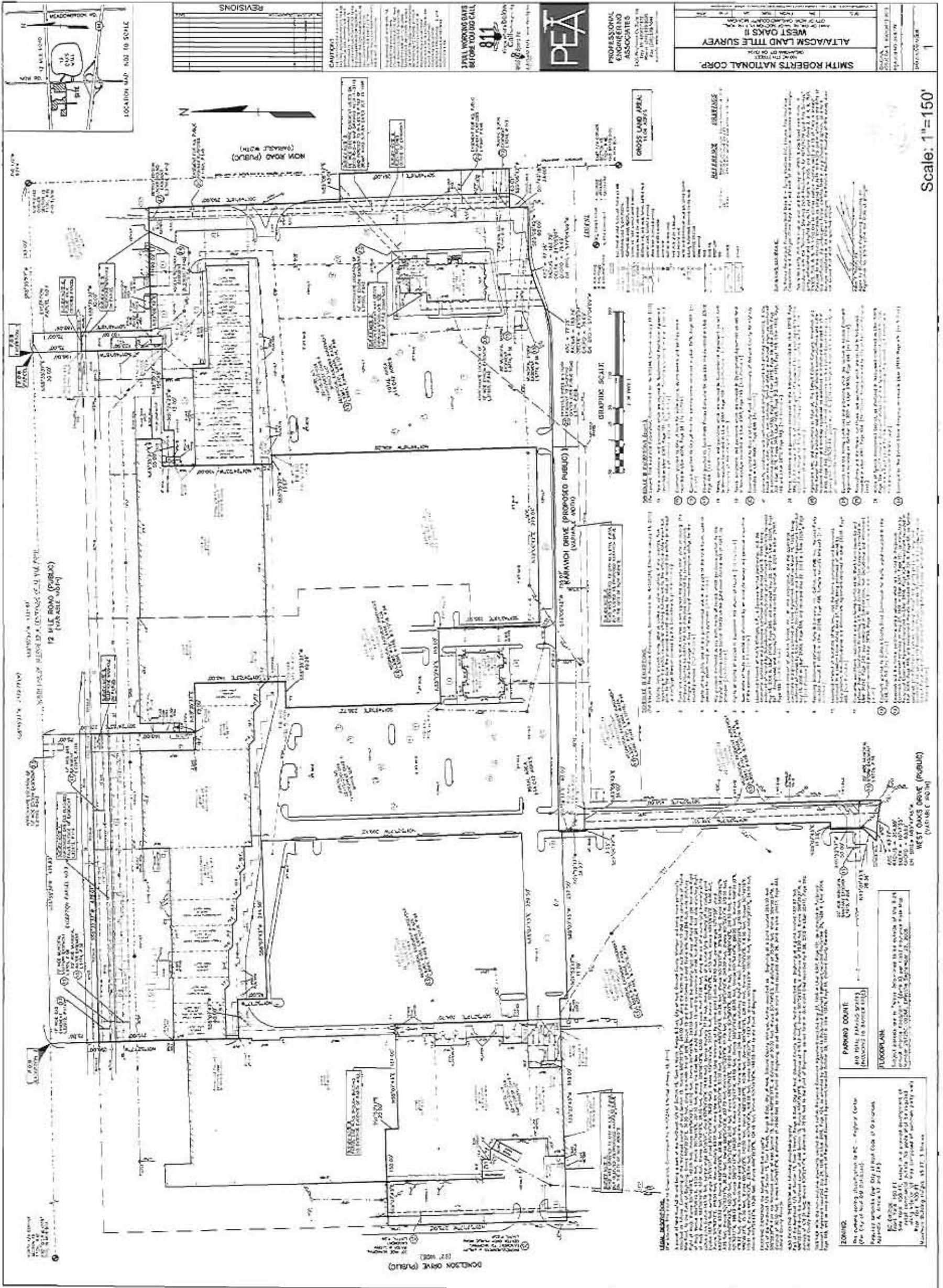
27793 Novi Road

Novi, MI

October 29, 2013



**SITE PLAN**  
NTS

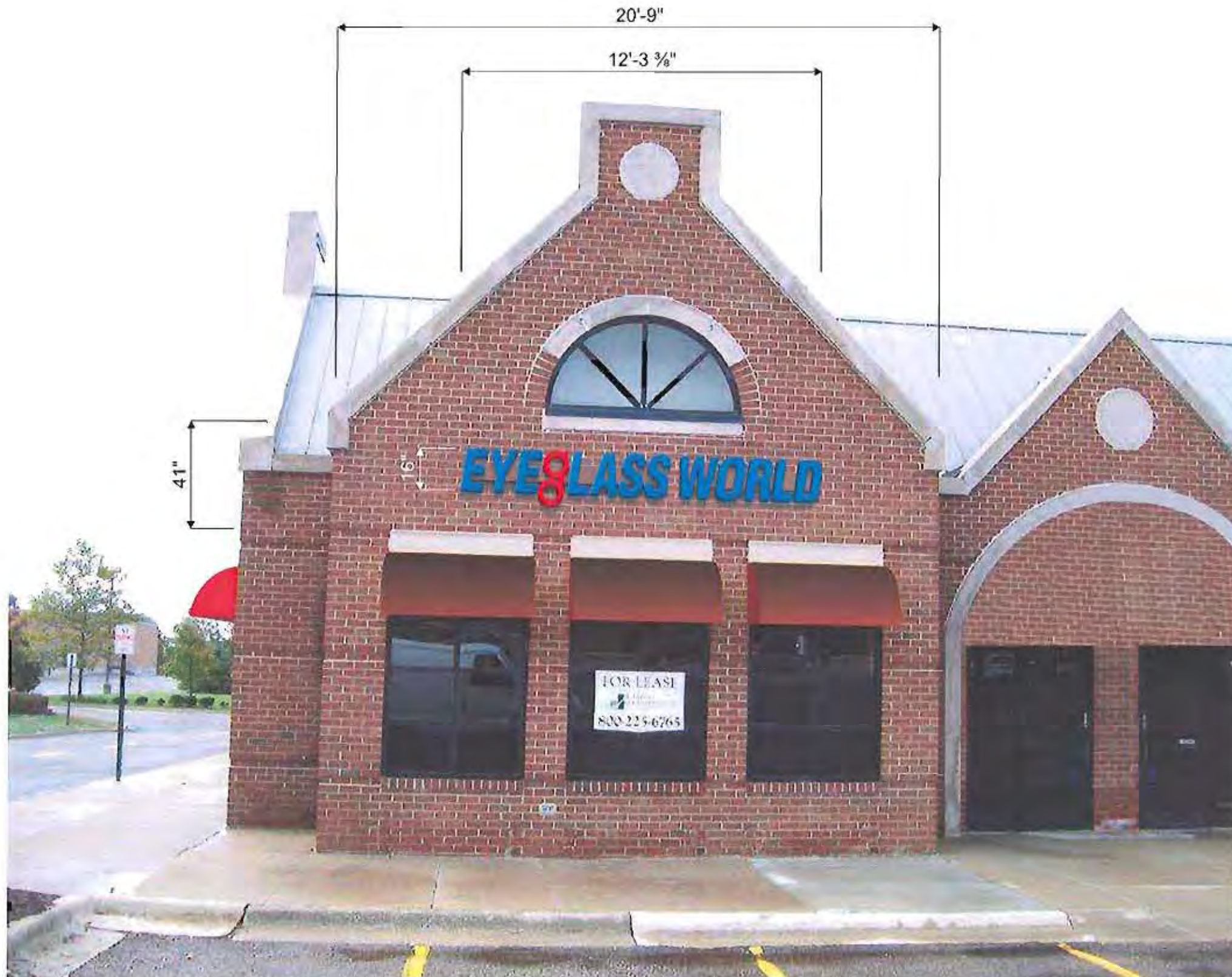






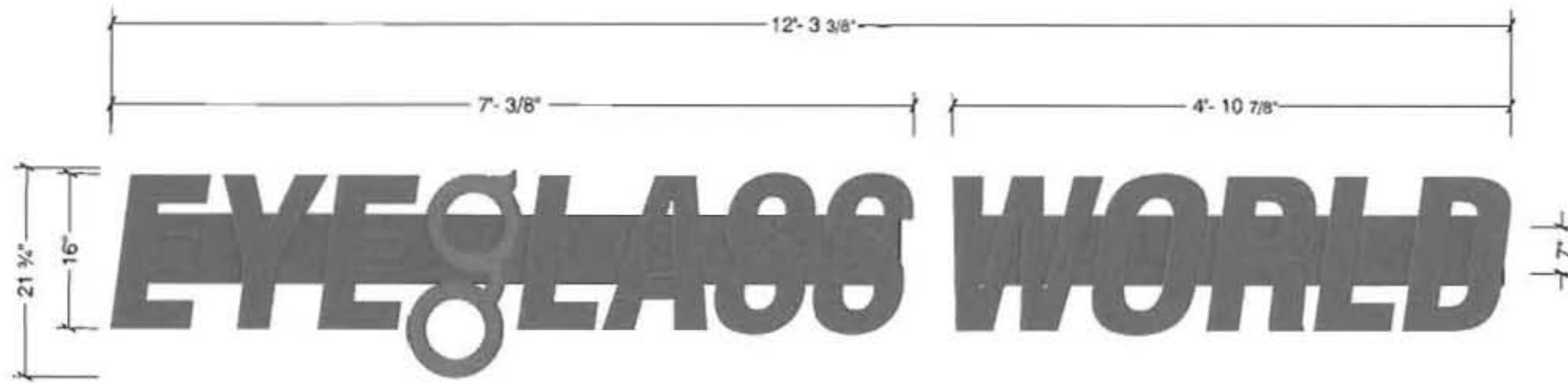
★ - Location of Proposed Sign      ■ - Parking Spaces Adjacent to Building





**PROPOSED NORTH ELEVATION**  
NTS

SIGN CENTERED VERTICALLY &  
HORIZONTALLY WITHIN SIGN BAND.



**FACE-LIT CHANNEL LETTERS**

SCALE: 3/4" = 1'-0"

SQ FT: 22.25

QTY: 1

**ILLUMINATION**

LETTERS: BLUE GOQ-3B LEDs,  
GLASSES LOGO: RED GOQ-3R LEDs,  
12V REMOTE POWER SUPPLY.

**FACES**

LETTERS: 807-1 BLUE PLEX,  
GLASSES LOGO: 278-0 RED PLEX.

**RETURNS**

5" x .040 ALUMINUM,  
LETTERS: PRE-PAINTED BLUE,  
GLASSES LOGO: PRE-PAINTED RED.

**TRIM CAPS**

LETTERS: 1" BLUE  
GLASSES LOGO: 1" RED

**LETTER BACKS**

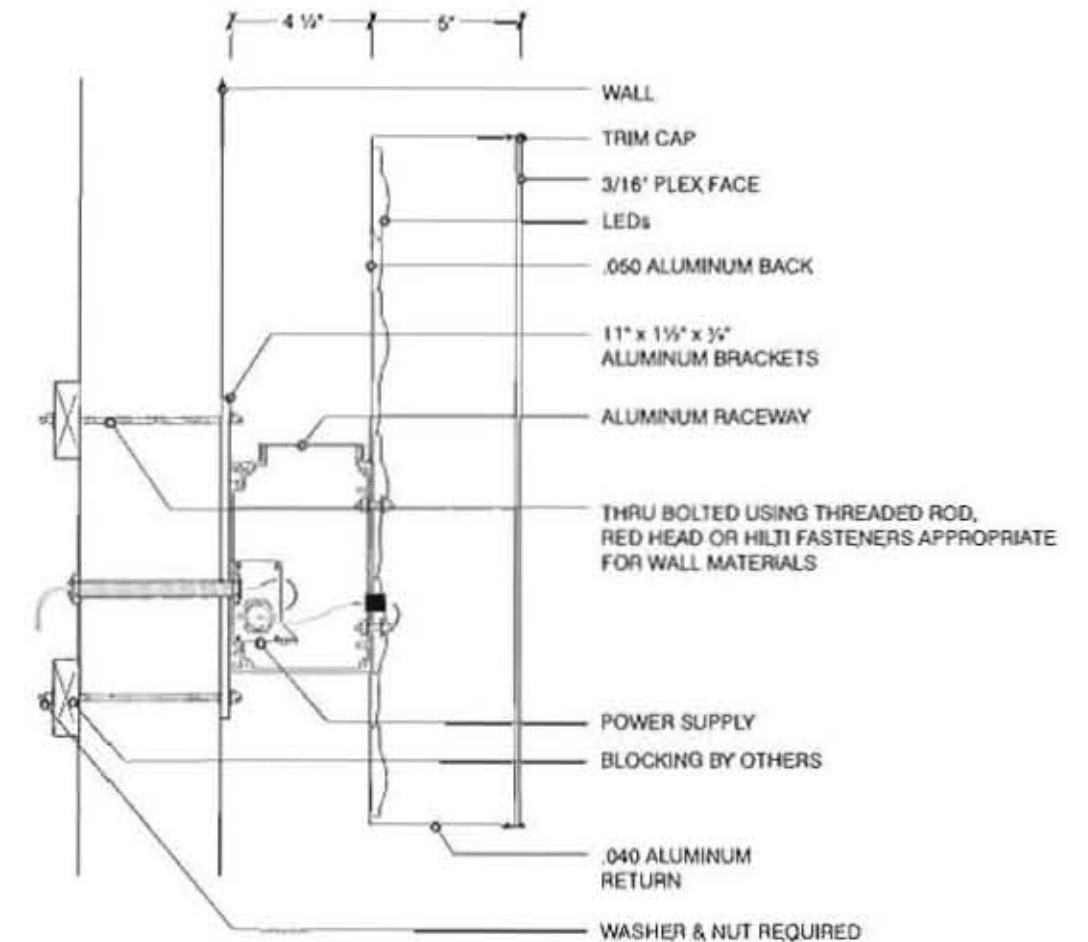
.050 ALUMINUM.

**MOUNTING**

7" x 4 1/2" ALUMINUM RACEWAYS,  
RACEWAYS MOUNTED TO  
11" x 1 1/2" x 1/4" THICK ALUMINUM  
MOUNTING BRACKETS,  
THRU BOLTED USING THREADED ROD,  
RED HEAD OR HILTI FASTENERS  
APPROPRIATE FOR WALL MATERIAL.  
WASHER & NUT REQUIRED ON BACK  
OF FASTENERS.  
RACEWAYS & BRACKETS PAINTED TO  
MATCH PMS 7517C.  
IF FACADE IS EIFS, PROVIDE SLEEVES TO  
PREVENT EIFS MATERIAL FROM CRUSHING.

**ELECTRIC**

RACEWAY TO CONTAIN POWER SUPPLY.  
UL LISTED / EXTERIOR.



**CROSS SECTION**  
NTS