

Wireless Zone: Novi, MI



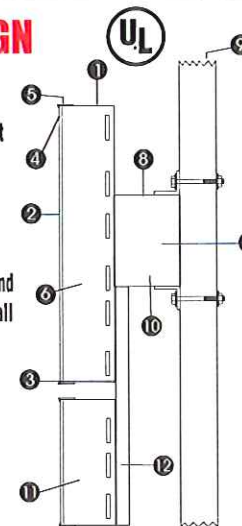
Store Frontage: 18'



New set of internally illuminated channel letters on raceway
 Need to cut drywall in interior to access 2' overhang
 Raceway Color: SW6335

LED ILLUMINATED CHANNEL LETTERS & CLOUD SIGN

- | | |
|--------------------------------|---|
| 1 Return Material | .040 Aluminum BLACK |
| 2 Face Material | 3/16" Acrylite Acrylic sheet with matte black HP vinyl on lower cabinet |
| 3 Letter Backs | 1/8" Aluminum |
| 4 Face Detail | Check & Z Acrylite red 211-1 all others Acrylite white 015-2 |
| 5 Face Retainer | 1" Trimcap Black and Red for the check and Z |
| 6 LIGHTING | US LED white/Red LEDs |
| 7 Remote Power Supply | Sloan 12 Volt power supply mounted in raceway, disconnect switch on raceway end |
| 8 Raceway/Mounting | 1/8" thick, 8" x 8" extruded aluminum Raceway with fasteners through wall |
| 9 Existing facade | Brick or block |
| 10 Electrical Source / Voltage | Behind Facade 120 volts |
| 11 Channel Cloud Sign | Same specs as letters |
| 12 Mounting Bar | 2"x 2" x 1/4" Aluminum Angle-Iron painted to match raceway |



UL Listed sign with UL label on end of raceway

Folder Name: Drawings\Verizon Wireless Master Folder\Novi Pavillion 2-22-11\Drawings

THIS DRAWING IS PROVIDED & INTENDED FOR CONCEPTUAL PURPOSES ONLY. THE FINISHED PRODUCT MAY BE SUBJECT TO MINOR & NECESSARY MODIFICATIONS TO AID OR ENABLE FABRICATION PROCEDURES
 DESIGNS INCLUDED ON THIS SHEET ARE THE SOLE PROPERTY OF MLS SIGNS INC. REPRODUCTION OR ALTERATION IN ANY FORM IS FORBIDDEN WITHOUT WRITTEN PERMISSION FROM THE OWNER.

W.O# # Here

DWG# Channel Letters.cdr

SIGN LOCATION ADDRESS

SITE CONTACT PERSON

Customer Signature:

Date:

Time: 10 20 30 40 50 60/30 60 90 120 150

Scale: Custom 1" = 60' 452"

Designer: S. Guilmet

Date: 3/2/11

Revision #: 0

MLS
 (S-I-G-N-S)

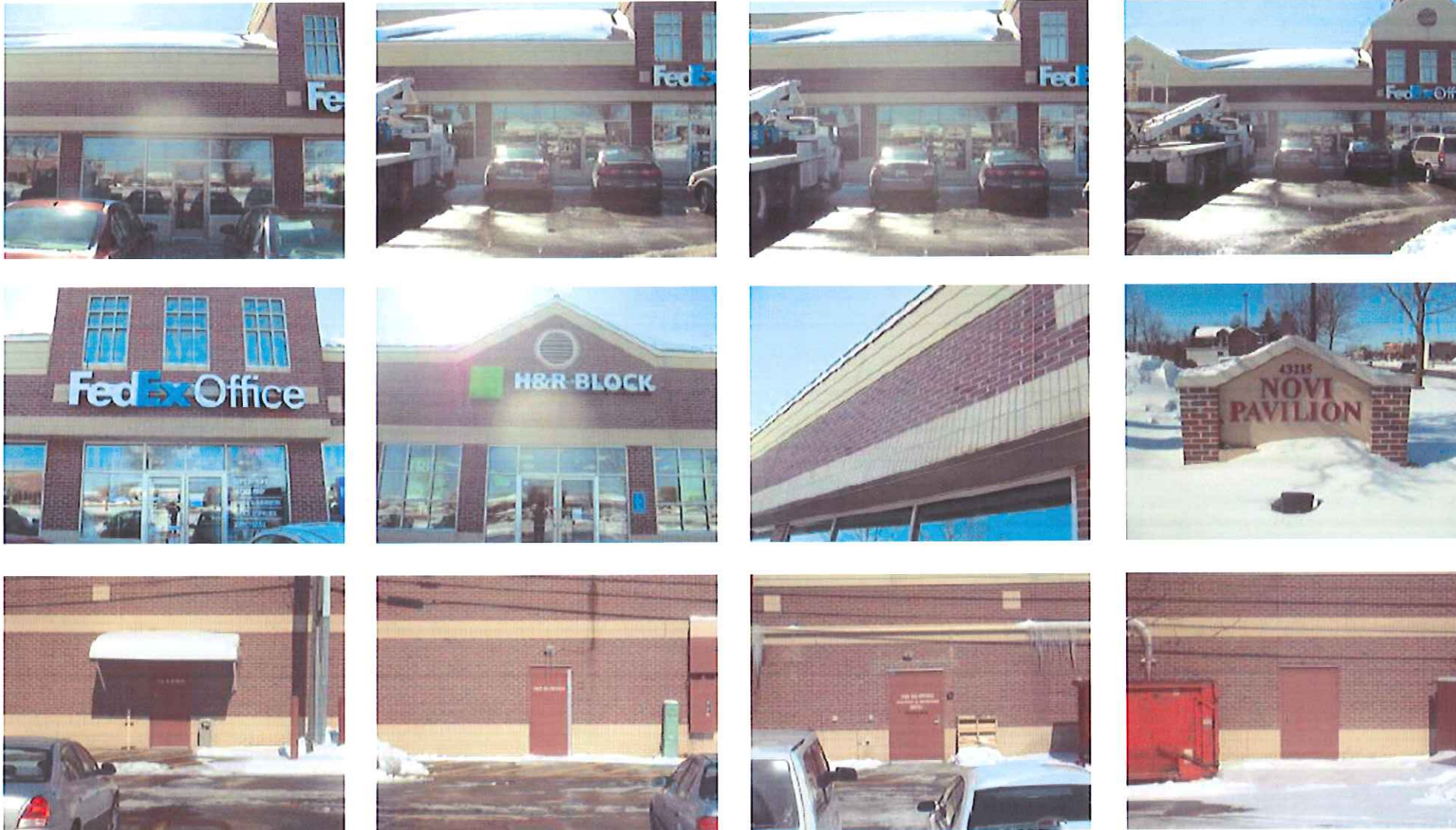
25733 D'Hondt Court
 Chesterfield Twp., MI. 48051

Ph# 586-948-0200 Fax# 586-948-0300



Wireless Zone: Novi, MI

Survey Photos:



Folder Name: Drawings\Verizon Wireless Master Folder\Novi Pavillion 2-22-11\Drawings

THIS DRAWING IS PROVIDED & INTENDED FOR CONCEPTUAL PURPOSES ONLY. THE FINISHED PRODUCT MAY BE SUBJECT TO MINOR & NECESSARY MODIFICATIONS TO AID OR ENABLE FABRICATION PROCEDURES.
DESIGNS INCLUDED ON THIS SHEET ARE THE SOLE PROPERTY OF MLS SIGNS INC. REPRODUCTION OR ALTERATION IN ANY FORM IS FORBIDDEN WITHOUT WRITTEN PERMISSION FROM THE OWNER.

W.O#	#	H	e	r	e				
DWG# Channel Letters.cdr									
SIGN LOCATION ADDRESS _____									
SITE CONTACT PERSON _____									

Customer Signature: _____

Date: _____

Time: 10 20 30 40 50 60/30 60 90 120 150 ()

Scale: NTS

Designer: S. Guilmet

Date: 3/2/11

Revision #: 0



25733 D'Hondt Court
Chesterfield Twp., MI. 48051

Ph# 586-948-0200 Fax# 586-948-0300



Underwriters Laboratories Inc.
MLS SIGNS INC. 2005