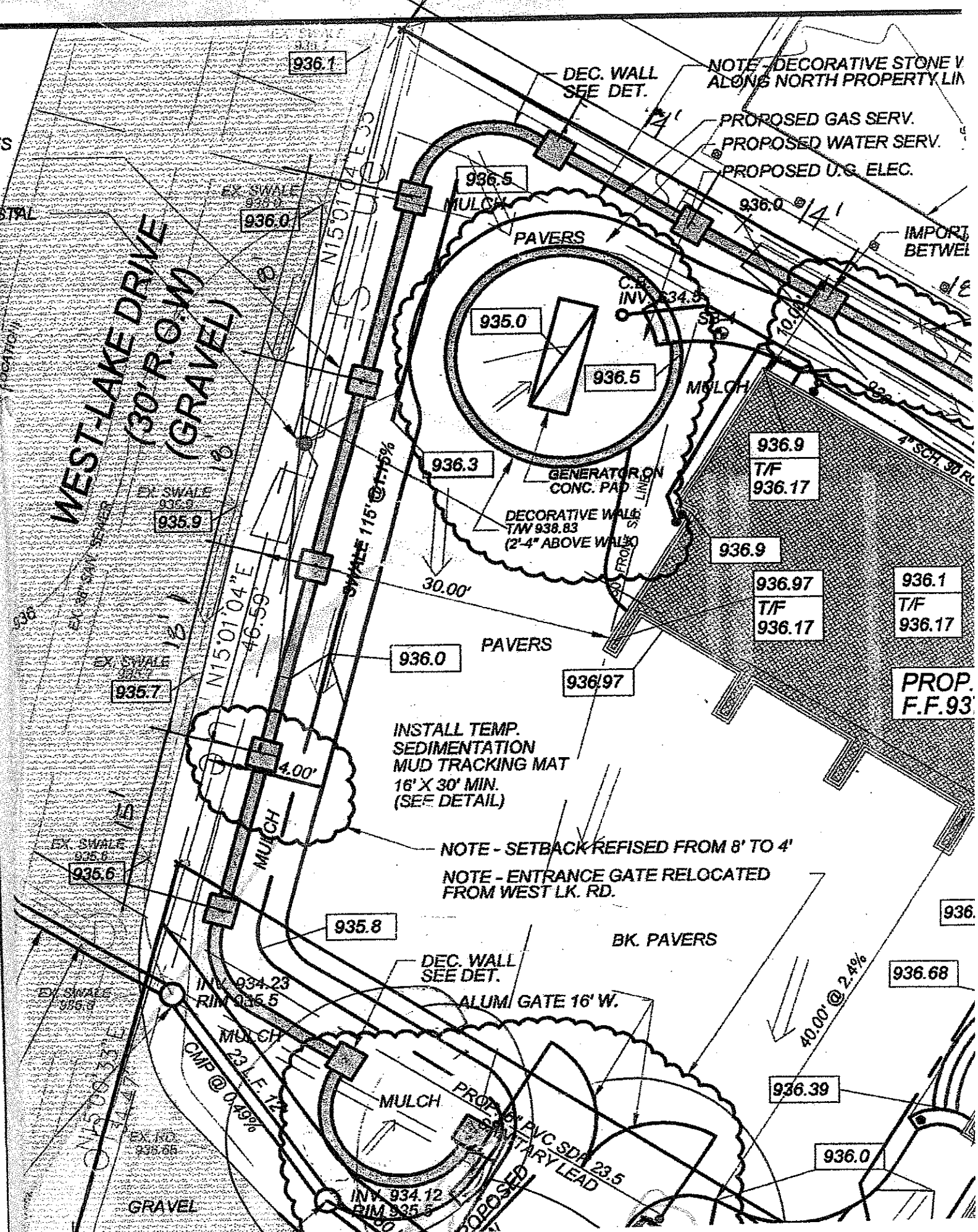


Complete construction of the unpermitted decorative stone wall approved accessory structure.

This structure ~~sits~~ sits in the open in the front yard and looks from a decorative stand point incomplete. From a landscape perspective, adding the ornamental limestone would help complete this, enhance and beautify the front yard and its surrounding landscape instead of blending in with the surrounding perimeter walls.

Adding this gazebo ornamental structure will give the existing stone wall access structure a meaning of purpose and not just a wall enclosing a generator.



NOTE - DECORATIVE STONE V ALONG NORTH PROPERTY LINE

PROPOSED GAS SERV.  
PROPOSED WATER SERV.  
PROPOSED U.G. ELEC.

WEST LAKE DRIVE  
(30' R.O.W.)  
(GRAVEL)

DEC. WALL  
SEE DET.

IMPORT  
BETWEL

PAVERS

935.0

936.5

936.3

GENERATOR ON  
CONC. PAD

DECORATIVE WALL  
T/W 938.83  
(2'-4" ABOVE WALL)

936.9

T/F  
936.17

936.9

936.97

T/F  
936.17

936.1

T/F  
936.17

PROP.  
F.F. 93

936.0

PAVERS

936.97

INSTALL TEMP.  
SEDIMENTATION  
MUD TRACKING MAT  
16' X 30' MIN.  
(SEE DETAIL)

NOTE - SETBACK REVISED FROM 8' TO 4'

NOTE - ENTRANCE GATE RELOCATED  
FROM WEST LK. RD.

BK. PAVERS

DEC. WALL  
SEE DET.

ALUM. GATE 16' W.

40.00' @ 2.4%

936.

936.68

MULCH

MULCH

MULCH

936.39

936.0

GRAVEL

INV. 934.12  
RIM 935.5

PROPOSED  
PVC SD  
TARY LEAD

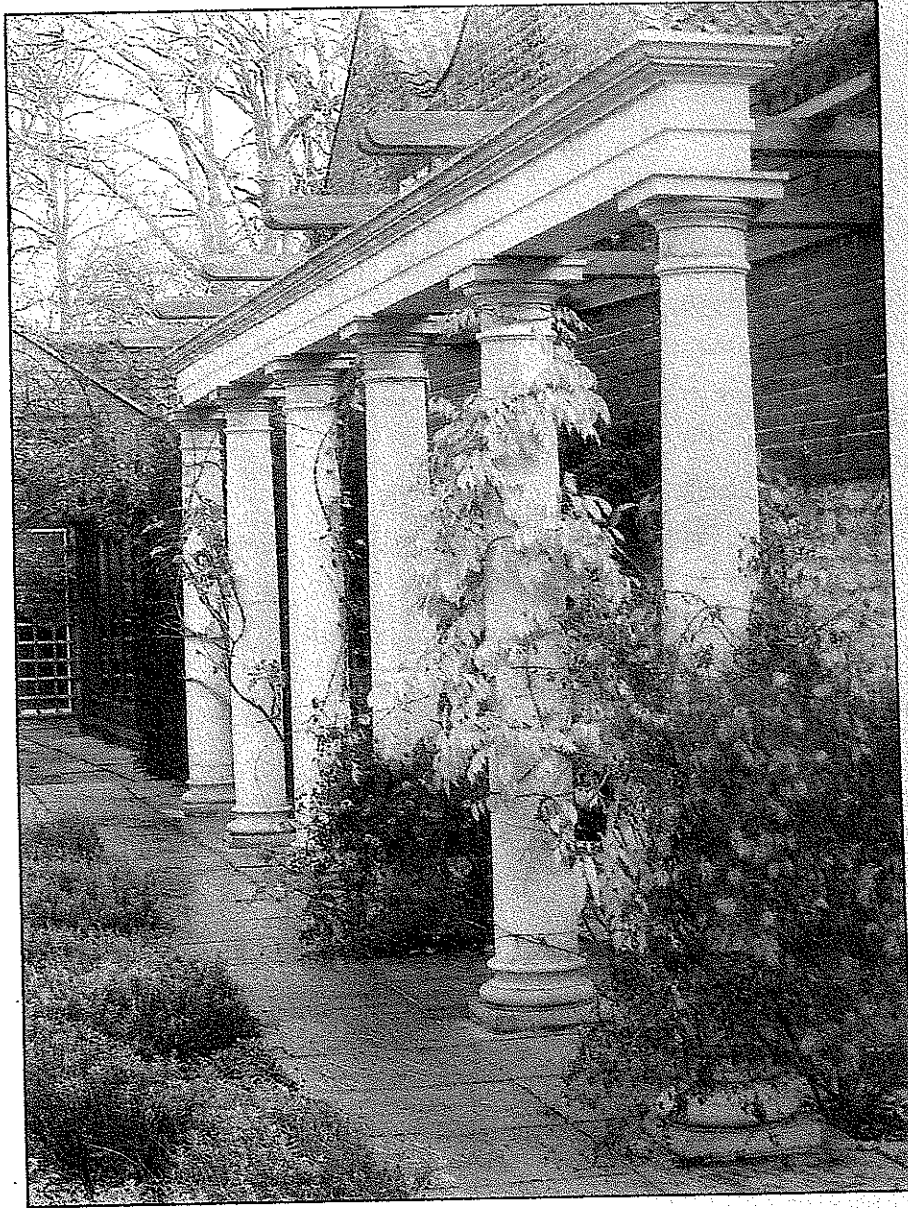
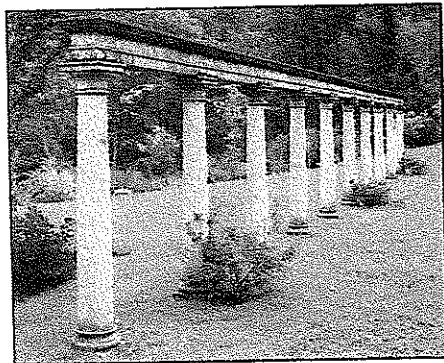
# Pergola

## Pergola L900

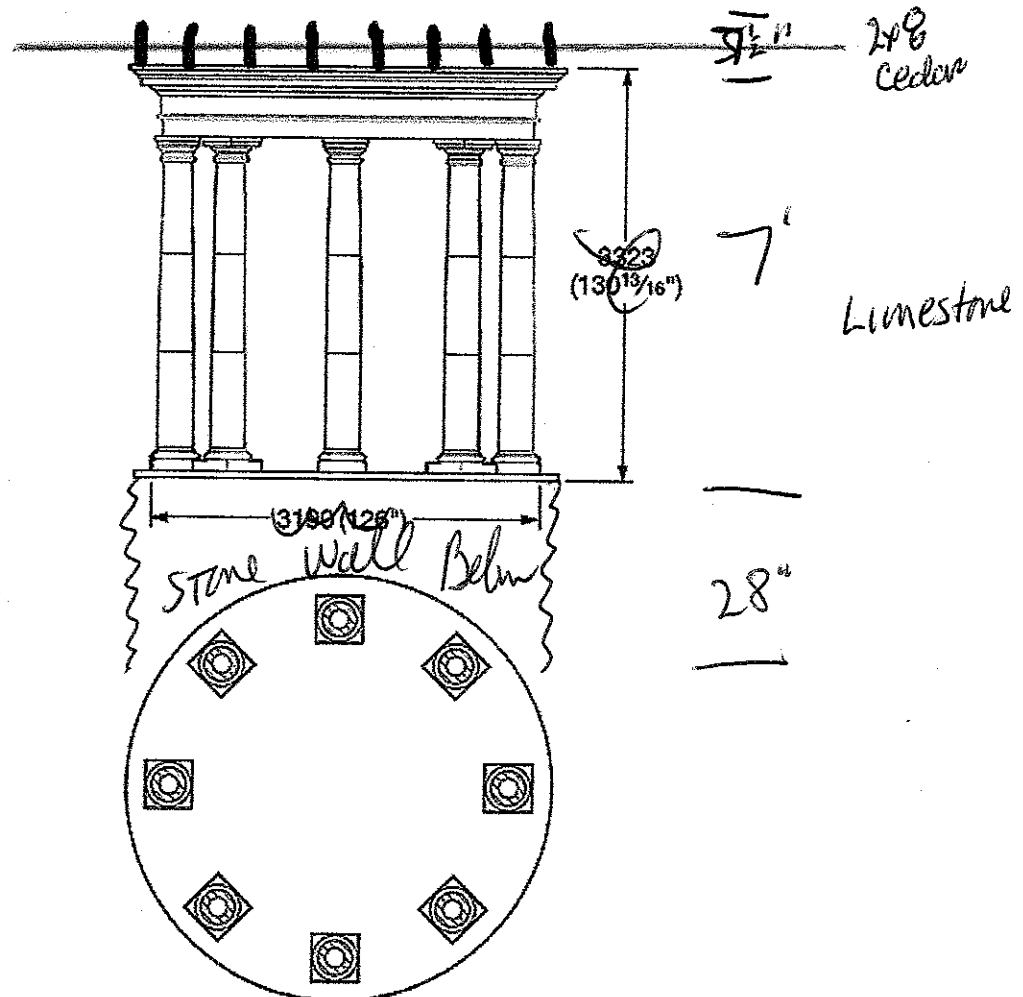
The pergola is designed for the M7 Tuscan Column range and can be supplied for column spacings of up to 1829mm (72") centres.

TS Tech Sheet No. PG10

TS CAD1 Column Assembly Details



Just an idea of what the proposed pergola would look like but setting on a radius wall.



TS Tech Sheet No. T20 & T21  
 TS CAD1 Column Assembly Details

10/8/2007

GUDAITIS RESIDENCE  
(PROPOSED)

ROSENTHAL RES.  
(EXISTING)

WEST LAKE DR  
2' GAS (APPROX. LOCATION)

SOUTH LAKE CT.

EX. 36" SAN. SEWER

EXIST. 18" CONC. SIM.

EX. 36" SAN. SEWER

EX. 36" SAN. SEWER

EX. 12" SAN. SEWER

935

es:\dncs\My Documents\A

