



South on Cabot Drive

**SIGN**graphix

39255 Country Club Drive, Suite B-35,  
Farmington Hills, Michigan 48331-3490  
Ph. 248-848-1700 Fax 248-848-1722  
www.signgraphix.net

**Mercantile Bank of Michigan**

DRAWING: 9-25-07  
**13151.1** 10-5-07  
JOB:  
15561

CLIENT SIGNATURE:  
DATE:  

**28350 Cabot Drive Novi, MI**

These designs, details and plans represented herein are the property of SignGraphix, Inc; specifically developed for your personal use in connection with the project being planned for you by SignGraphix, Inc. It is not to be shown to anyone outside your organization, nor is it to be used, reproduced, exhibited or copied in any fashion whatsoever all any part of this design (excepting registered trademarks) remain the property of SignGraphix, Inc.



North on Cabot Drive

**SIGN**graphix

39255 Country Club Drive, Suite B-35,  
Farmington Hills, Michigan 48331-3490  
Ph. 248-848-1700 Fax 248-848-1722  
www.signgraphix.net

**Mercantile Bank of Michigan**

DRAWING: 9-25-07  
**13151.3** 10-5-07  
JOB: 10-8-07  
15561

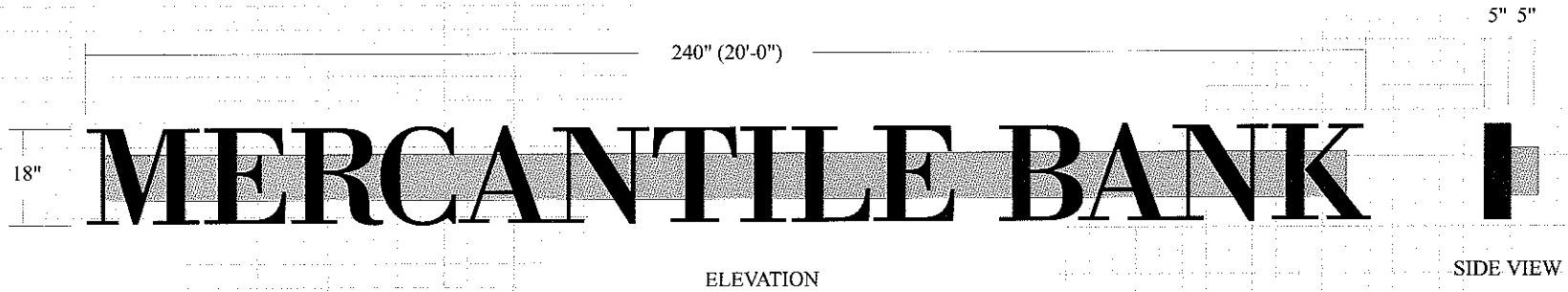
**28350 Cabot Drive Novi, MI**

CLIENT SIGNATURE:

DATE:

These designs, details and plans represented herein are the property of SignGraphix, Inc; specifically developed for your personal use in connection with the project being planned for you by SignGraphix, Inc. It is not to be shown to anyone outside your organization, nor is it to be used, reproduced, exhibited or copied in any fashion whatsoever all any part of this design (excepting registered trademarks) remain the property of SignGraphix, Inc.





**CONSTRUCTION:**  
 Internally illuminated aluminum channel letters with  
 Black / White acrylic faces. Illuminated with White LED  
 modules. Low voltage transformers mounted in fabricated  
 aluminum raceway. Raceway to painted to match building.

MERCANTILE BANK

30 Sq. Ft.

ONE (1) SET OF INTERNALLY ILLUMINATED WALL LETTERS ON A RACEWAY  
 Scale: 1/2" = 1'-0"

**SIGN**graphix

39255 Country Club Drive, Suite B-35,  
 Farmington Hills, Michigan 48331-3490  
 Ph. 248-848-1700 Fax 248-848-1722  
 www.signgraphix.net

**Mercantile Bank of Michigan**

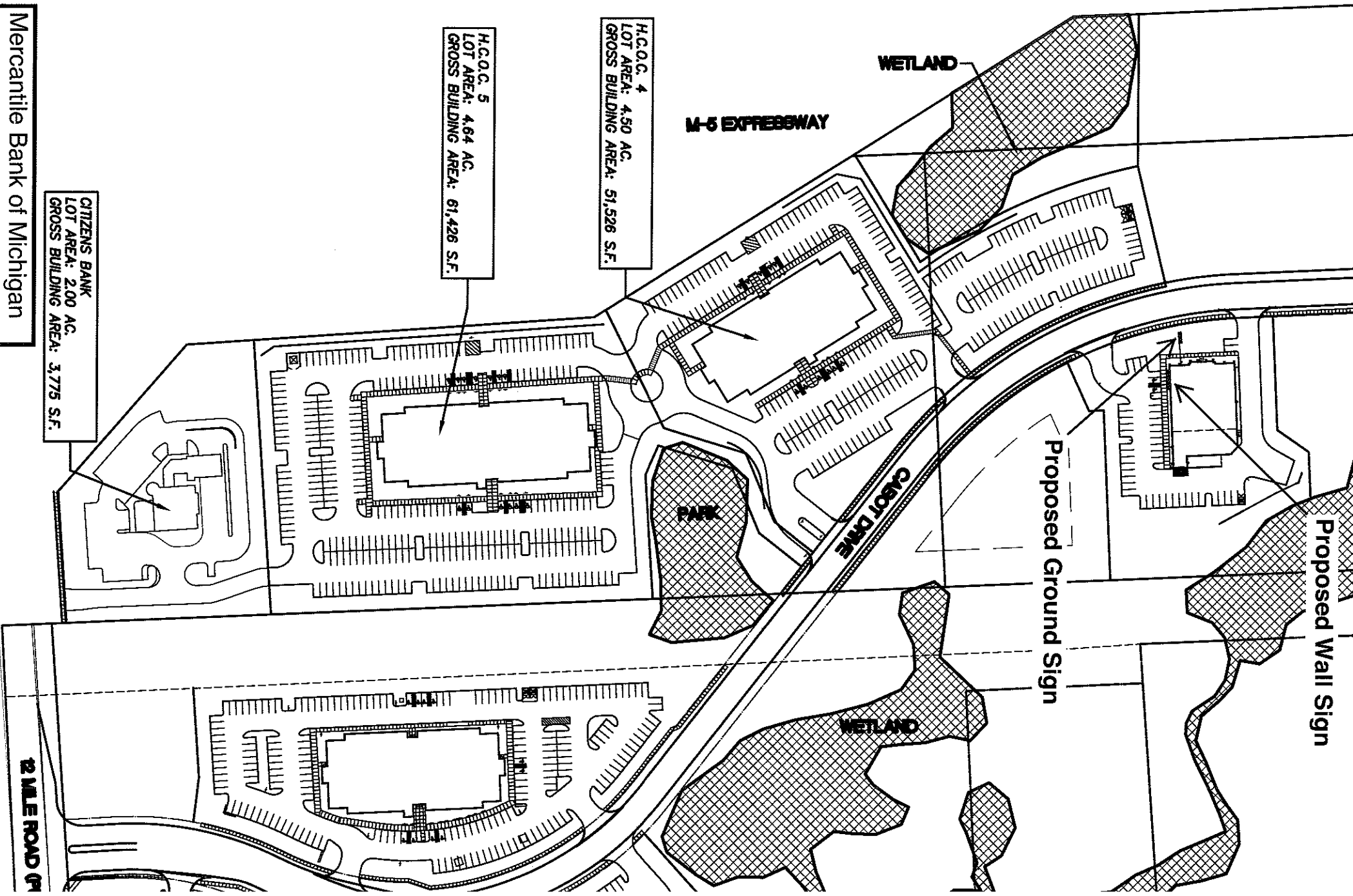
28350 Cabot Drive Novi, MI

DRAWING: 10-8-07  
**13182**  
 JOB:  
 15561

CLIENT SIGNATURE:

DATE:

These designs, details and plans represented herein are the property of SignGraphix, Inc; specifically developed for your personal use in connection with the project being planned for you by SignGraphix, Inc. It is not to be shown to anyone outside your organization, nor is it to be used, reproduced, exhibited or copied in any fashion whatsoever all any part of this design (excepting registered trademarks) remain the property of SignGraphix, Inc.



Mercantile Bank of Michigan  
 28350 Cabot Drive  
 Novi, MI

Applicant:  
 Sign Graphix  
 39255 Country Club Drive  
 Suite B-35  
 Farmington Hills, MI 48331

09/13/07

**HCOC 4/HCOC 5**  
 A NORTHERN EQUITES  
 GROUP DEVELOPEMENT



12 MILE ROAD (M)