



CITY of NOVI CITY COUNCIL

Agenda Item E
May 9, 2011

SUBJECT: Approval to award an amendment to the engineering services agreement with Orchard, Hiltz & McCliment for additional design engineering services related the Nine Mile Road Pathway (Meadowbrook Road to Haggerty Road) project in the amount of \$25,401.

SUBMITTING DEPARTMENT: Department of Public Services, Engineering Division *BSC*

CITY MANAGER APPROVAL: *[Signature]*

EXPENDITURE REQUIRED	\$25,401
AMOUNT BUDGETED	\$46,500 (Engineering and Easements)
APPROPRIATION REQUIRED	\$9,500
LINE ITEM NUMBER	204-204.00-974.421

BACKGROUND INFORMATION:

The engineering design was awarded to Orchard, Hiltz & McCliment (OHM) in September 2010 for the Nine Mile Road Pathway project (Meadowbrook Road to Haggerty Road). The original scope of the project included a 10-foot wide (as required by the Transportation Enhancement Grant) along the north side of Nine Mile Road between Meadowbrook Road and Haggerty Road. There were several changes made to the project scope as it evolved based on resident feedback and direction from City Council. On April 18, 2011 City Council approved a motion to decrease the width of the proposed pathway from 10 feet to 6 feet wide requiring a redesign of the pathway and making the project ineligible for grant funding.

The engineering scope changes are discussed in detail in the attached memo from Brian Coburn dated April 28, 2011. Staff recommends \$25,401 (out of a requested \$39,161) in additional out of scope work relating to additional easement exhibits, alternative review of an 8-foot wide pathway, some redesign to remove easements and address residents' concerns, and the additional effort required to redesign and bid the six-foot wide pathway.

As a result of the scope change, the existing 5-foot wide path segment along the frontage of Pavilion Court Apartments and Trillium Village will now remain in place, and will not be removed and replaced as previously designed. The attached map shows the location of the existing 5-foot wide segment and the proposed 6-foot wide segments. Additionally, the scope change will allow staff to review and make changes to the pathway alignment where possible since the City's design standards will now be used instead of the MDOT standard.

Like the original design for the 10-foot wide pathway, the six-foot wide pathway will be aligned completely within the City's Nine Mile Road right-of-way or in recently-acquired easements. Work is anticipated to begin in late summer and be completed in late fall. Landscaping, including tree planting as needed, will likely be deferred until spring 2012; however, our plan is to save costs by having City staff prepare the landscape plan and oversee its implementation. It is anticipated that the Tree Replacement Fund could be used to fund the replacement trees and landscaping for this project.

RECOMMENDED ACTION: Approval to award an amendment to the engineering services agreement with Orchard, Hiltz & McCliment for additional design engineering services related the Nine Mile Road Pathway (Meadowbrook Road to Haggerty Road) project in the amount of \$25,401.

	1	2	Y	N
Mayor Landry				
Mayor Pro Tem Gatt				
Council Member Fischer				
Council Member Margolis				

	1	2	Y	N
Council Member Mutch				
Council Member Staudt				
Council Member Wrobel				



MEMORANDUM

TO: ROB HAYES, P.E.; DIRECTOR OF PUBLIC SERVICES
FROM: BRIAN COBURN, P.E.; ENGINEERING MANAGER *B/C*
SUBJECT: NINE MILE PATHWAY ENGINEERING FEES
DATE: APRIL 28, 2011

4/28/2011
To: Mayor and City
Council members
FYI upcoming for May 9 consideration.
Clay

On April 18, 2011, City Council approved a motion to decrease the width of the proposed pathway along the north side of Nine Mile Road from 10 feet (as required by the Transportation Enhancement Grant) to six feet to match the master planned pathway width for arterial roads in the recently adopted Non-Motorized Master Plan. Staff has been working with Orchard, Hiltz & McCliment (OHM), the consulting engineers for the project, since September 2010 to develop construction plans for the 10-foot wide pathway with the intent to construct the path in summer 2011.

At the initiation of every project, staff works with the consulting engineer to determine a project scope that is included in the agreement. There were several changes made to the original scope of this project as it evolved that were based on resident feedback and policy direction. The scope changes outlined in the attached requests from OHM dated April 14, 2011 and April 21, 2011 were not anticipated at the start of the project and were therefore not included in the original scope or the awarded design fee. Staff has reviewed OHM's change request and the following scope changes are recommended:

- Thirteen additional easements were required for the project, each requiring a legal description and exhibit be drafted by the engineering consultant at a total cost of \$5,900 (five exhibits were included in the original scope, 18 were drafted).
- In advance of the discussion by City Council on January 24, 2011 regarding a narrower pathway, staff requested an alternative analysis by the consultant to assist with the discussion at a cost of \$1,200.
- There was some additional redesign of the pathway near Haggerty Road that was directed by staff to better utilize a larger easement granted by the owner of the vacant parcel, eliminate several easements from the project, and to alleviate the residents' perceived safety concerns regarding the intersection crosswalks at a cost of \$3,700.
- As a result of the policy direction provided on April 18, the change in the pathway width will require some additional design effort resulting in a fee increase of \$5,151.
- A number of residents have expressed concerns about the existing pathway alignment, which can be adjusted in some cases based on the decreased width and changed design standard for the pathway (city standard versus MDOT). Staff recommends a fee increase of \$4,500 to review and make changes to the pathway alignment where possible. Doing so would better address residents' desires to preserve as much of the existing landscaping as practical.

- Since the project will no longer be funded by the grant (which requires that MDOT prepare the bid documents, advertise the project for bidding, and award the project on our behalf), the preparation of bid documents and other bidding phase tasks must be added to OHM's scope. Staff recommends a fee increase of \$4,950 for these out-of-scope bidding tasks.

While the consultant has requested \$39,161 in additional fees, staff is recommending only \$25,401 for completed out-of-scope tasks related to the design of the 10-foot wide pathway, and for additional tasks related to modifying the design for a six-foot wide pathway that have yet to be done. Of the \$25,401 recommended by staff, \$10,800 is for out-of-scope work that was in review prior to April 18, and \$14,601 is related to decreasing the pathway width to six feet wide.

Like the original design for the 10-foot wide pathway, the six-foot wide pathway will be aligned completely within the City's Nine Mile Road right-of-way or in recently-acquired easements. Work is anticipated to begin in late summer and be completed in late fall. Landscaping, including tree planting as needed, will likely be deferred until spring 2012; however, our plan is to save costs by having City staff prepare the landscape plan and oversee its implementation.

If this approach is satisfactory, we will prepare an amendment to the engineering contract for consideration on a future City Council agenda.

cc: Clay Pearson, City Manager
Victor Cardenas, Assistant City Manager
Kathy Smith-Roy; Finance Director
Ben Croy, P.E.; Civil Engineer

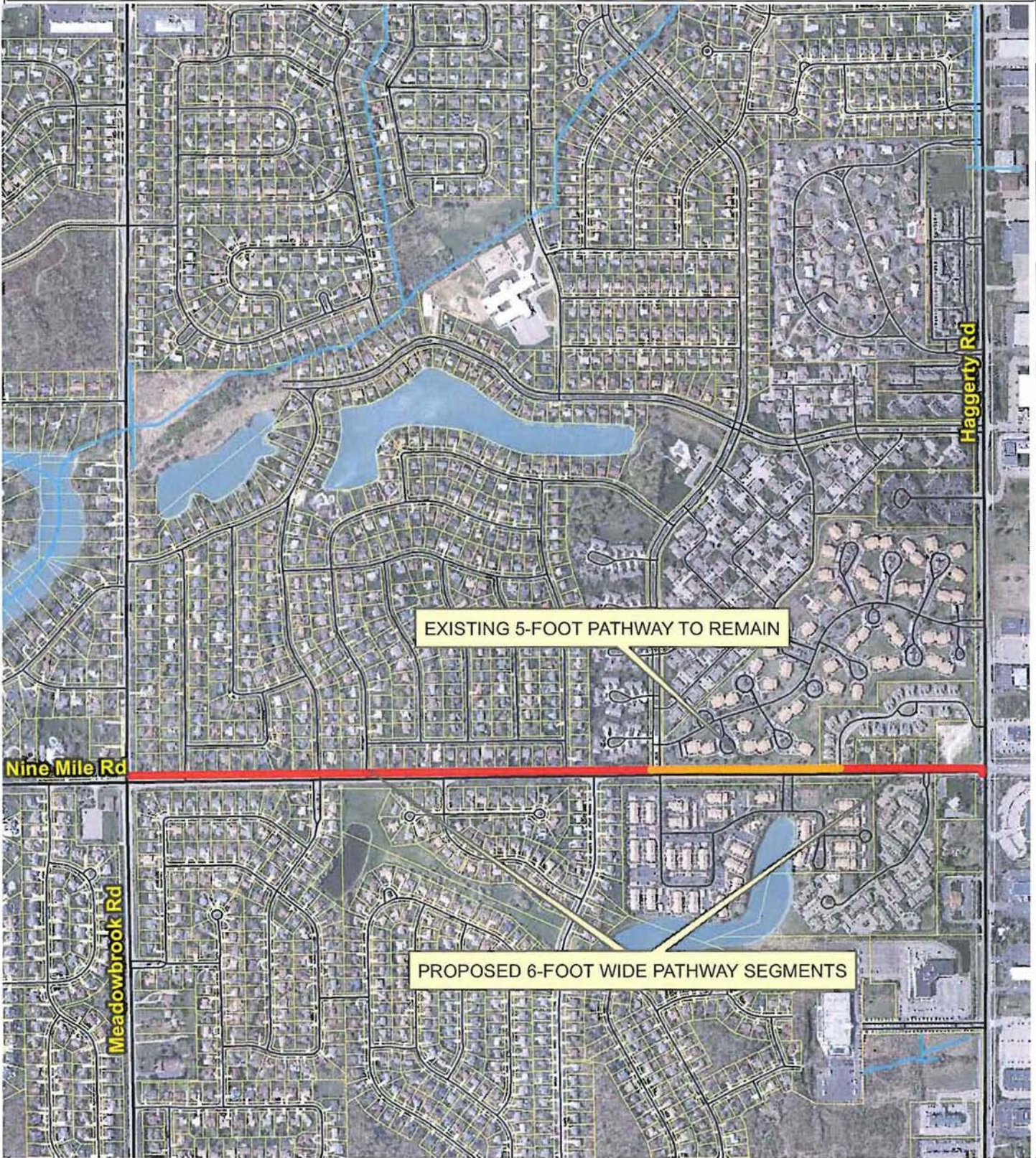
MAP INTERPRETATION NOTICE

Map information depicted is not intended to replace or substitute for any official or primary source. This map was intended to meet National Map Accuracy Standards and use the most recent, accurate sources available to the people of the City of Novi. Boundary measurements and area calculations are approximate and should not be construed as survey measurements performed by a licensed Michigan Surveyor as defined in Michigan Public Act 132 of 1970 as amended. Please contact the City GIS Manager to confirm source and accuracy information related to this map.

City of Novi



NINE MILE ROAD PATHWAY PROJECT (6-FOOT DESIGN) Meadowbrook Road to Haggerty Road



Nine Mile Pathway





Location Map

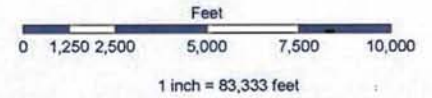


Map Legend



Legend

-  Proposed 6' Pathway
-  Existing 5' Sidewalk
-  Existing 8' Pathway
-  275 Pathway (10')



City of Novi
Engineering Division
Department of Public Services
45175 W Ten Mile Rd
Novi, MI 48375
cityofnovi.org

Map Author: Brian Coburn
Date: 4/2/11

MAP INTERPRETATION NOTICE

Map information depicted is not intended to replace or substitute for any official or primary source. This map was intended to meet National Map Accuracy Standards and use the most recent, accurate sources available to the people of the City of Novi. Boundary measurements and area calculations are approximate and should not be construed as survey measurements performed by a licensed Michigan Surveyor as defined in Michigan Public Act 132 of 1970 as amended. Please contact the City GIS Manager to confirm source and accuracy information related to this map.



Authorization for Additional Services

Project: Engineering Services for
9 Mile Road Non-motorized Pathway
Meadowbrook Road to Haggerty Road

Date: April 14, 2011

The 9 Mile Pathway project consists of a one-mile segment of non-motorized pathway on the north side of 9 Mile Road between Meadowbrook and Haggerty. The following is a detailed description of additional services required or requested along with a comparison to the original scope of work, where applicable.

Probable Construction Cost

The scope of work has increased due to the extent of grading required to meet existing conditions of the surrounding ditches, side streets, and adjacent properties. These conditions have resulted in an increase in the probable construction costs by approximately 10%. The current estimate is approximately \$295,000 and therefore resulted in an increased design effort.

Additional Work Required or Requested:

- Current Engineer's Opinion of Probable Construction Cost is \$295,000.
- Standard fee of \$29,500. Request an additional compensation of \$2,790.

Original Scope of Work

- Standard fee of \$26,710 was based on estimated construction cost of only \$267,092.

Easement Acquisitions

The original pathway alignment was designed based on topographic information and site visits with the city. The alignment was discussed with the City and a determination was made based on cost effective considerations, such as ditch enclosures, significant drainage improvements, tree removals, and utility relocations. The extent of grading required to meet existing conditions resulted in the need for multiple temporary and permanent easements to properly construct the pathway. This easement work was largely outside of the original design scope.

Additional Work Required or Requested:

- Preparation of 18 easement documents (sketch and legal description) for 13 separate properties. \$3,900.
- Required significant coordination with the City and Attorney to create these documents and make adjustments as requested. \$1,200.
- Modifications to both the temporary grading and permanent easements were requested by the City for the corner parcel at Haggerty Road. \$800.

Original Scope of Work

- 2-5 easement documents are included in the standard fee.

Pathway Alignment Redesign

Redesign of the pathway alignment from the original determined location was requested by the City to reduce the number of easements required to construct the path as obtaining some of these easements proved difficult. The alignment was originally designed to avoid significant ditch enclosures, drainage system improvements, tree removals and utility relocations. These design changes to eliminate the need for easements required revisions to the pathway cross sections, detailed grading plans, ramp/crossing designs, and pedestrian signal layout (at Haggerty Road). The revised pathway alignment was ultimately moved further from property lines (closer to the road), required additional ditch enclosures, and increased the construction costs.

Additional Work Required or Requested:

- Redesign of pathway to avoid easements in rear yards of five properties on Oakwood. \$3,100
- Redesign of pathway to avoid easement for the property at the corner of Cranbrooke. \$1,800
- Redesign of pathway to avoid easements from the Trillium development. \$2,600
- Redesign of the pathway across the property at the corner of Haggerty Road. \$3,700

Original Scope of Work:

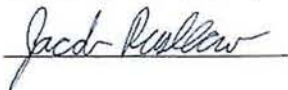
- Pathway redesign after the alignment was determined was not anticipated or included.

Proposed budget amount for additional services:

Basic Fee amendment	\$ 2,790
Easement documents	\$ 5,900
<u>Redesign of pathway alignment</u>	<u>\$11,200</u>
Total	\$19,890

Based upon the increase in the scope of work we respectfully request a budget amendment in the amount of \$19,890.

Sincerely,
Orchard, Hiltz & McCliment, Inc.



Jacob Rushlow, P.E.

Approved By:
City of Novi

Date:

Cc: James Stevens, P.E., OHM
File

**Proposal for
9 Mile Sidewalk Change
Professional Services Cost Estimate
April 21, 2011**

Tasks	Associate	PE III	PE II	PE I	Technician IV	Technician III	Technician II	Professional Surveyor	Surveyor III	Surveyor II	Administrative Support	Totals
	\$145.00	\$120.00	\$115.00	\$100.00	\$103.00	\$93.00	\$80.00	\$110.00	\$88.00	\$85.00	\$50.00	
Task # 1 - Contract Book												
Prepare Specifications	2		0	28			4					34
QA/QC	4											
Bidding Support			0	4								4
Bid Tab			0	1	0		2					3
Recommendation for award				3				0	0	0		3
TOTAL HOURS	6	0	0	36	0	0	6	0	0	0	0	44
TOTAL COSTS	\$870	\$0	\$0	\$3,600	\$0	\$0	\$480	\$0	\$0	\$0	\$0	\$4,950
Task # 2 - 6' Wide Sidewalk Change												
Plan Changes	2		0	16	0	12						30
Quantity calcs				8		0						8
Cost Estimate	1		0	4								5
QA/QC	4		0		0			2				6
TOTAL HOURS	7	0	0	28	0	12	0	2	0	0	0	49
TOTAL COSTS	\$1,015	\$0	\$0	\$2,800	\$0	\$1,116	\$0	\$220	\$0	\$0	\$0	\$5,151
Task # 3 - Change Alignment												
Change Horizontal and Vertical Alignments and associated details and notes	10		0	40	0	40						90
TASK HOURS	10	0	0	40	0	40	0	0	0	0	0	90
TASK COSTS	\$1,450	\$0	\$0	\$4,000	\$0	\$3,720	\$0	\$0	\$0	\$0	\$0	\$9,170
TOTAL HOURS	23	0	0	104	0	52	6	2	0	0	0	183
TOTAL COSTS	\$3,335	\$0	\$0	\$10,400	\$0	\$4,836	\$480	\$220	\$0	\$0	\$0	\$19,271
PERCENTAGE OF PROJECT	17.31%	0.00%	0.00%	53.97%	0.00%	25.09%	2.49%	1.14%	0.00%	0.00%	0.00%	

PROJECT GRAND TOTAL	\$19,271.00
----------------------------	--------------------