

- [Home](#)
- [About Us](#)
- [Join / Sign in](#)
- [Your Account](#)
- [Help](#)

# Invasive and Exotic Species



Search: [Advanced Search](#) First time visitor? Please [sign up](#) for free membership!

- [Insects](#)
- [Weeds](#)
- [Diseases](#)
- [Other Invasives](#)
- [Publications](#)
- [Collections](#)
- [Contribute](#)

## Japanese pine sawyer beetle

Coleoptera > Cerambycidae > *Monochamus alternatus* (Hope)

*Synonym(s)*: pine sawyer beetle

### Identification, Biology, Control and Management Resources

- [Monochamus alternatus Hope \(Coleo: Cerambycidae\), the Pine Sawyer](#) - University of Massachusetts Amherst Campus  
<http://www.people.umass.edu/baodew/monochamusA.htm> - Jul 12, 2006

### Selected Images

[View All Images](#)



**Number:** 2160031  
**Description:** Adult(s); dorsal view; female antenna is about one third longer than its body; pinned specimen; China, May 2001, 2386 QA  
**Photographer:** Pest and Diseases Image Library,  
[Additional Resolutions and Image Usage](#)



**Number:** 2160030  
**Description:** Feature(s); thorax ventral view; pinned specimen; China, May 2001, 2386 QA  
**Photographer:** Pest and Diseases Image Library,  
[Additional Resolutions and Image Usage](#)



**Number:** 2160026  
**Description:** Feature(s); head front; pinned specimen; China, May 2001, 2386 QA  
**Photographer:** Pest and Diseases Image Library,  
[Additional Resolutions and Image Usage](#)



**Number:** 2154051  
**Description:** Adult(s); delete  
**Photographer:** Christopher Pierce, USDA APHIS PPQ  
[Additional Resolutions and Image Usage](#)



**Number:** 2154047  
**Description:** Adult(s); dorsal view  
**Photographer:** Christopher Pierce, USDA APHIS PPQ  
[Additional Resolutions and Image Usage](#)



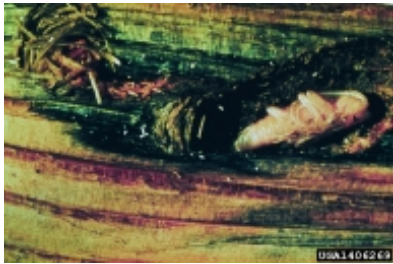
**Number:** 2131029  
**Description:** Larva(e);  
**Photographer:** Jijing Song and Juan Shi, Beijing Forestry University  
[Additional Resolutions and Image Usage](#)



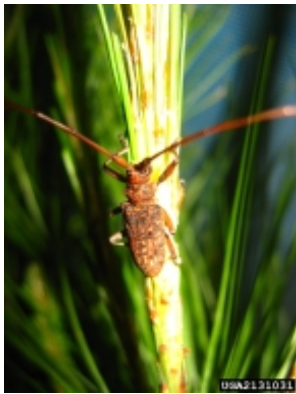
**Number:** 2131030  
**Description:** Pupa(e);  
**Photographer:** Jijing Song and Juan Shi, Beijing Forestry University  
[Additional Resolutions and Image Usage](#)



**Number:** 1442029  
**Description:** Adult(s); The adult emerges from a dead pine and prepares to fly to a healthy pine.  
**Photographer:** USDA Forest Service - Rocky Mountain Region Archive, USDA Forest Service  
[Additional Resolutions and Image Usage](#)



**Number:** 1406269  
**Description:** Pupa(e);  
**Photographer:** USDA Forest Service - North Central Research Station Archive, USDA Forest Service  
[Additional Resolutions and Image Usage](#)



**Number:** 2131031  
**Description:** Adult(s);  
**Photographer:** Jijing Song and Juan Shi, Beijing Forestry University  
[Additional Resolutions and Image Usage](#)



**Number:** 2160029  
**Description:** Feature(s); tarsi; pinned specimen; China, May 2001, 2386 QA  
**Photographer:** Pest and Diseases Image Library,  
[Additional Resolutions and Image Usage](#)



**Number:** 2160035  
**Description:** Feature(s); lateral view; pinned specimen; China, May 2001, 2386 QA  
**Photographer:** Pest and Diseases Image Library,  
[Additional Resolutions and Image Usage](#)



**Number:** 3943059  
**Description:** Trap(s); Trap baited with alpha pinene and ethanol for trapping adults to determine if they are infected with pinewood nematode.  
**Photographer:** William M. Ciesla, Forest Health Management International  
[Additional Resolutions and Image Usage](#)

## Invasive Reference(s)

- 

## Subject Reference(s)

- -
- 
- The Exotic Forest Pest Information System for North America (EFPISNA) is a joint project of the member organizations of the Insect and Disease Study Group of the North American Forest Commission. - <http://www.exoticforestpests.org/>



Invasive.org is a joint project of [The Bugwood Network](#), [USDA Forest Service](#) and [USDA APHIS PPQ](#).  
[The University of Georgia](#) - [Warnell School of Forestry and Natural Resources](#) and  
[College of Agricultural and Environmental Sciences](#) - [Dept. of Entomology](#)

[Home](#) | [Image Usage](#) | [Accessibility Policy](#) | [Privacy Policy](#) | [Disclaimers](#) | [Contact Us](#)

Last updated on Monday, August 25, 2008 at 03:43 PM  
[www.invasive.org](http://www.invasive.org) [version 2.0](#), [XHTML 1.1](#), [CSS](#), [508](#).