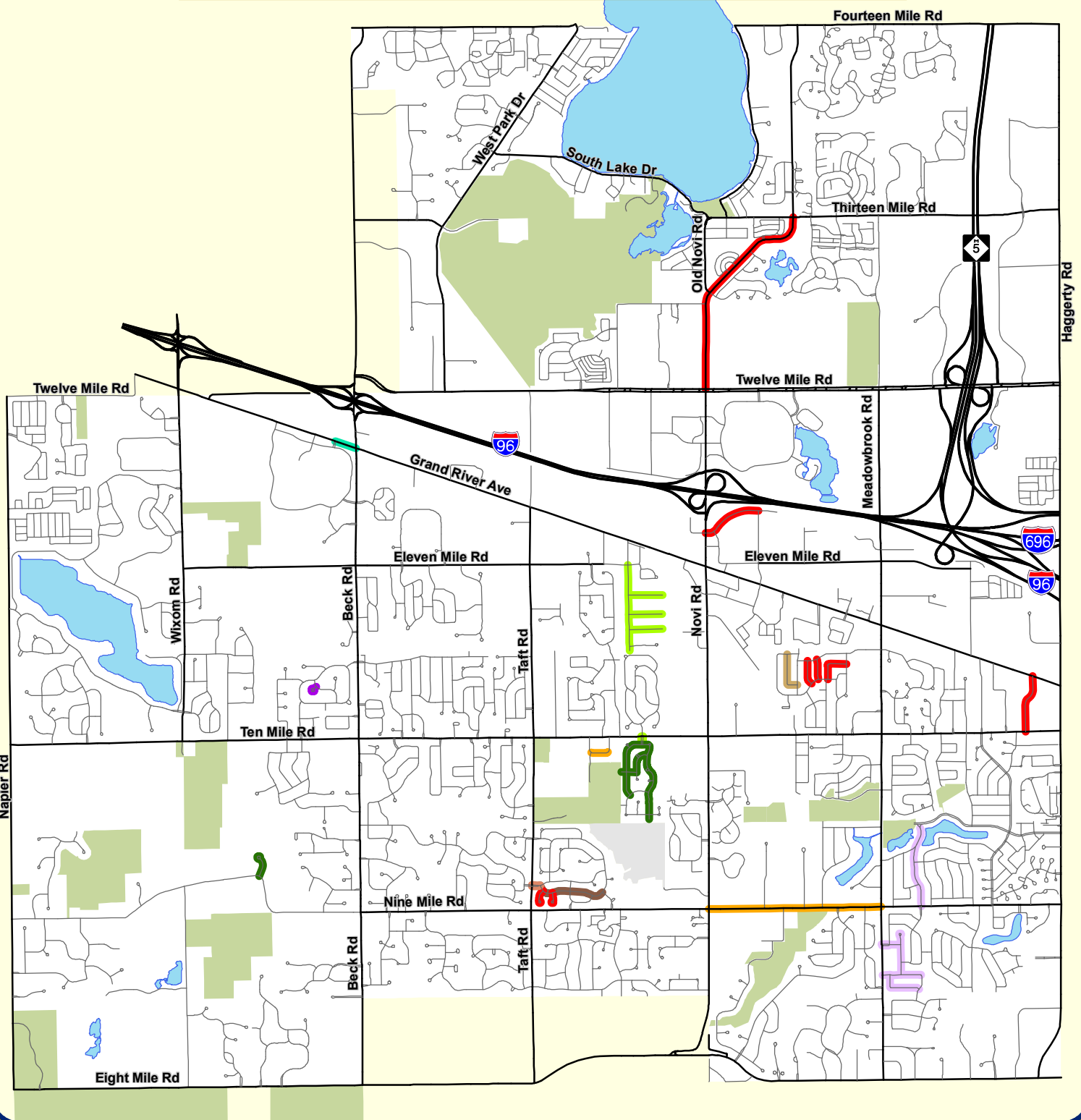


# Neighborhood Road Construction 2016

City of Novi, Michigan



Map Author: Jon Gartha  
 Date: May 4, 2016  
 Project: Neighborhood Road Construction  
 Version #: 1.0

**MAP INTERPRETATION NOTICE**  
 Map information depicted is not intended to replace or substitute for any official or primary source. This map was intended to meet National Map Accuracy Standards and use the most recent, accurate sources available to the people of the City of Novi. Boundary measurements and area calculations are approximate and should not be construed as survey measurements performed by a licensed Michigan Surveyor as defined in Michigan Public Act 132 of 1970 as amended. Please contact the City GIS Manager to confirm source and accuracy information related to this map.

## Road Construction Projects

- Reconstruction
- Reconstruction/Pavement Repairs
- Pavement Repairs
- Repair
- Rehabilitation
- Duel Left Turn

## HMA Asphalt

- Priority 1
- Priority 2
- Priority 3
- Priority 4



## City of Novi

Engineering Division  
 Department of Public Services  
 26300 Lee BeGole Drive  
 Novi, MI 48375  
[cityofnovi.org](http://cityofnovi.org)



1 inch = 4,236 feet

