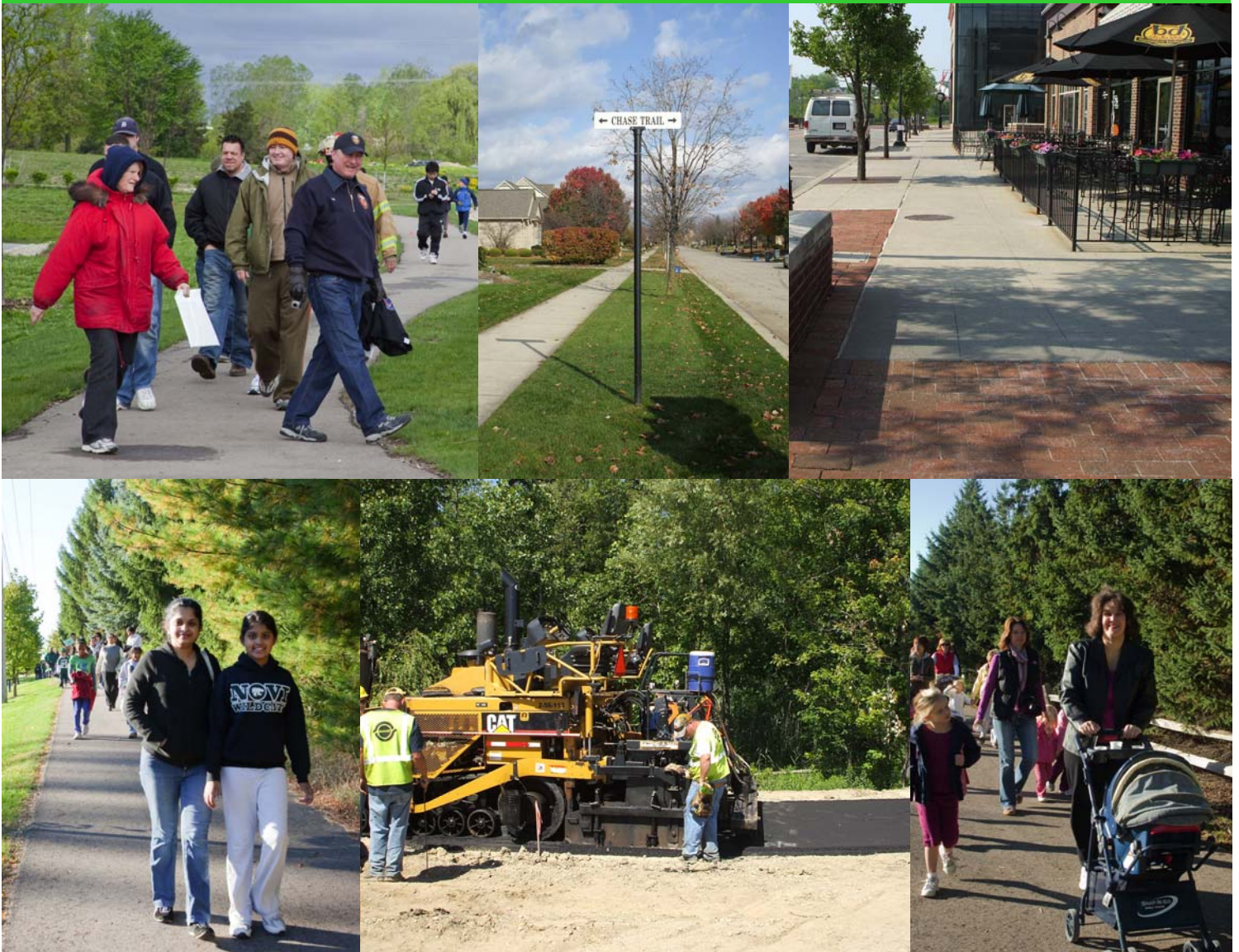


# Pathway and Sidewalk Prioritization Analysis and Process 2011 Update

Draft - Approved by the Walkable Novi Committee November XX, 2011



# City Council

David B. Landry, Mayor (update after elections)

Bob Gatt, Mayor Pro Tem

Kathy Crawford, Council Member

Justin Fischer, Council Member

Terry Margolis, Council Member

Andrew Mutch, Council Member

David Staudt, Council Member

## City Administration

Clay J. Pearson, City Manager

Victor Cardenas, Assistant City Manager

Charles Boulard, Community Development Director

Barbara McBeth, Deputy Community Development Director

## Walkable Novi Committee

### Council Members

Andrew Mutch

David Staudt

### Planning Commission Environmental Committee Members

Tony Anthony

David Baratta

David Greco

### Parks, Recreation & Cultural Services Commission Members

Paul Policicchio

Hideki Torimoto

### Novi Parks Foundation Members

Linda Blair

Charles Staab

### Support Staff

P. Mark Spencer, AICP, Planner

Jason Magnum, Director Parks, Recreation & Cultural Services

# *2011 UPDATE - PATHWAY AND SIDEWALK PRIORITIZATION ANALYSIS AND PROCESS*

**Pathway and Sidewalk Prioritization Analysis and Process Update Overview.....2**

**Pathway and Sidewalk Prioritization Worksheets**

All Segments.....3

Top 20 Ranked Segments.....13

Off Road Recreational Pathways and On-Road Regional Pathways.....14

Short Segments.....16

Completed Segments.....17

Crossings.....19

Bike Routes.....21

**Pathway and Sidewalk Prioritization Analysis and Process Map**

Existing, Scheduled and Top 20 Proposed Pathway and Sidewalk Segments, Crossings and Bike Routes

## **Pathway and Sidewalk Prioritization Analysis and Process Update Overview**

The City of Novi Pathway and Sidewalk Prioritization Analysis and Process (PSPAP) was approved by City Council on November 13, 2006 which includes a provision for the annual updating of the PSPAP.

The PSPAP was last updated by the Walkable Novi Committee in November 2010. The Community Development Department's Planning Staff prepared updated Prioritization Analysis and Process worksheets and maps for review and approval by the Walkable Novi Committee using data collected through October 2011. In February 2011, the City adopted a Non-Motorized Master Plan that incorporated the PSPAP. Recommended off road pathways, bike routes and crossings from the Non-motorized Master Plan were added to the PSPAP to provide a consolidated tabular and graphic non-motorized planning document. The previous PSPAP data was amended to include a new set ranking points based on the segment's ranking in the Non-Motorized Master Plan. As with previous updates, completed segments were identified, new segments were added and segment ranking was recalculated. The Committee approved the update on **November XX, 2010**.

Since October 2006, over 28,000 feet of pathways and sidewalks were constructed by the public in the City of Novi and developers completed over 10,000 feet of pathways and sidewalks in the City of Novi. Currently an additional 7,000 feet of pathway and sidewalk segments are under construction in the City.

The updated Pathway and Sidewalk Prioritization Analysis and Process include the following changes:

- Revised "All Segments" worksheets
- Revised "Top 20 Ranked Segments" worksheets
- Revised "Proposed Off-Road Recreational Pathways & On-Road Regional Pathways" (Recreational Trails) worksheets
- Revised "Short Segments" worksheets
- Revised "Completed Segments" worksheet
- New "Crossings" worksheet
- New "Bike Routes" worksheet
- New Map depicting the location of existing and planned non-motorized facilities
- Park facilities maps removed (see Parks and Recreation web pages)

Please refer to the Pathway and Sidewalk Prioritization Analysis and Process approved by the City Council at its November 13, 2006 meeting for analysis and process details.



**Proposed Pathway and Sidewalk Segments  
in right-of-way 2011 Update  
(data through 11/1/11)**

pathways outside of road right of ways not included

**Pathway/Sidewalk Analysis/Prioritization Worksheet**

printed 11/03/2011

| Segment Item Number | OVERALL SEGMENT RANK | Located in Section Number | Side of Street Location | Street that segment is adjacent to | From                 | To                   | Number of pieces in segment | Segment Length (feet) excluding completed pieces and developer planned pieces | notes                         | TIER 1 CATEGORIES   |                                      |   |  |  |  |   |   |   |  |                    |                     |  |  |   | Total Tier 1 Points | Tier 1 Ranking |
|---------------------|----------------------|---------------------------|-------------------------|------------------------------------|----------------------|----------------------|-----------------------------|---|-------------------------------|---|--------------------------------------|---|--|--|--|---|---|---|--|--------------------|---------------------|--|--|---|---------------------|----------------|
|                     |                      |                           |                         |                                    |                      |                      |                             |   |                               | BICYCLE AND PEDESTRIAN ACCIDENTS (intersection accidents only included when sidewalk or pathway connection is missing -1/98 to 12/10) | TRAFFIC COUNTS (Average Daily Trips) | ACCESS TO SCHOOLS - (number elementary & intermediate schools within 1 mile ) | ACCESS TO SCHOOLS - (number of middle & high schools within 2 miles) | ACCESS TO SCHOOLS - (number of private schools over 100 students within 2 miles) | ACCESS TO PARKS (number within 1 mile) | ACCESS TO LIBRARY & CITY HALL (connected continuously by sidewalk or pathway) | ACCESS TO SHOPPING (number of shopping areas within 1 mile) | ACCESS TO PLACES OF WORSHIP (number of places of worship within 1 mile) | CONNECTED TO NEIGHBORING SIDEWALK or REGIONAL TRAIL SYSTEM | POPULATION SERVED  | SEGMENT COMPLETION  | CONSIDERABLE PUBLIC INTEREST   | NonMotorized Master Plan Recommendation                          | Novi Wixom Transportation Study Recommendation                          |                     |                |
|                     |                      |                           |                         |                                    |                      |                      |                             |   | points available per category | 5 points = 1 accident   | 0 = <10K ADTs                        | 4.5 = 1 school  | 4.5 = 1 school   | 4.5 = 1 school   | 4 = 1 park                             | 9 = connected to Library/City Hall  | 3.5 = 1 shopping area                                       | 3.5 = 1 places of worship   | 3.5 = connected to neighboring sidewalk system             | 0 = low density    | 3.5 = 1/2 to 1 mile | 10 = top 15 survey responses, resident petitions and documented segments requested by groups and government agencies | 20 = initial investment<br>15 = major corridor                   | Recommended Timeframe 15 = 2012-2016<br>10 = 2017-2020<br>5 = 2021-2024 |                     |                |
|                     |                      |                           |                         |                                    |                      |                      |                             |   | CIP sched current budget      | 10 = 2 accidents  | 5 = 10K-20K ADTs                     | 9 = 2 or more schools   | 9 = 2 or more schools  | 9 = 2 or more schools  | 8 = 2 or more parks                    |   | 7 = 2 or more shopping areas                                | 7 = 2 or more places of worship   | 7 = connected to regional trail system                     | 8 = medium density | 7 = over 1 mile     |  | greater of either NoMo Recommendation or Novi Wixom Trans. Study |   |                     |                |
| 65                  | 1                    | 23                        | p east                  | Novi Rd.                           | Grand River          | Ten Mile             | 1                           | 3,500   | Under Construction            | 10  | 10                                   | 4.5   | 4.5  | 4.5  | 4                                      | 9   | 7   | 0   | 0  | 16                 | 7                   | 0  | 20   | 0   | 96.5                | 13             |
| 92                  | 2                    | 27                        | s west                  | Novi Rd.                           | Ten Mile             | Nine Mile            | 2                           | 2,135   | 12-13 CIP                     | 15  | 5                                    | 9   | 9  | 4.5  | 8                                      | 9   | 7   | 3.5   | 0  | 16                 | 7                   | 10   | 20   | 0   | 123                 | 1              |
| 61                  | 3                    | 22                        | s west                  | Novi Rd.                           | Cemetery             | Pine Ridge Center    | 1                           | 3,600   | Under Construction            | 0   | 10                                   | 0   | 4.5  | 4.5  | 4                                      | 9   | 7   | 0   | 0  | 16                 | 7                   | 10   | 20   | 0   | 92                  | 16             |
| 81                  | 4                    | 25                        | p south                 | Ten Mile                           | Meadowbrook          | Haggerty             | 1                           | 5,300   | Sched.                        | 10  | 10                                   | 9   | 4.5  | 4.5  | 4                                      | 0   | 7   | 7   | 3.5  | 16                 | 3.5                 | 10   | 20   | 0   | 109                 | 3              |
| 145                 | 5                    | 23                        | s north                 | Ten Mile                           | Catherine Ind. Park  | Brookhaven           | 1                           | 1,143   | 2011/2012                     | 5   | 5                                    | 4.5   | 4.5  | 4.5  | 8                                      | 9   | 7   | 7   | 0  | 16                 | 7                   | 10   | 20   | 0   | 108                 | 4              |
| 90                  | 6                    | 26                        | p south                 | Ten Mile                           | Novi Rd.             | Chipmunk             | 1                           | 2,400   | 15-16 CIP                     | 5   | 5                                    | 4.5   | 4.5  | 4.5  | 8                                      | 9   | 7   | 3.5   | 0  | 16                 | 7                   | 10   | 20   | 0   | 104                 | 8              |
| 9                   | 7                    | 4                         | s south                 | Pontiac Trail                      | West Park            | Beck                 | 3                           | 5,000   |                               | 20  | 5                                    | 0   | 9  | 0  | 4                                      | 0   | 7   | 3.5   | 3.5  | 16                 | 7                   | 10   | 20   | 0   | 105                 | 6              |
| 80B                 | 8                    | 24                        | s north                 | Ten Mile                           | Meadowbrook          | Willowbrook Estates  | 1                           | 189   |                               | 10  | 10                                   | 9   | 4.5  | 4.5  | 4                                      | 0   | 7   | 7   | 3.5  | 8                  | 7                   | 10   | 20   | 0   | 105                 | 7              |
| 89                  | 9                    | 26                        | p east                  | Novi Rd.                           | Ten Mile             | Ice Arena            | 1                           | 500   | 12-13 CIP                     | 5   | 5                                    | 4.5   | 9  | 4.5  | 4                                      | 9   | 7   | 7   | 0  | 16                 | 7                   | 0  | 20   | 0   | 98                  | 12             |
| 93                  | 10                   | 27                        | s north                 | Nine Mile                          | Novi Rd.             | Taft                 | 3                           | 3,300   | 13-14 CIP                     | 5   | 0                                    | 9   | 9  | 0  | 8                                      | 9   | 3.5   | 0   | 0  | 16                 | 7                   | 10   | 20   | 0   | 96.5                | 13             |
| 119                 | 11                   | 36                        | s east                  | Meadowbrook                        | Eight Mile           | Nine Mile            | 2                           | 3,800   | 15-16 CIP                     | 5   | 5                                    | 9   | 4.5  | 0  | 8                                      | 9   | 0   | 7   | 0  | 16                 | 7                   | 10   | 20   | 0   | 101                 | 11             |
| 62                  | 12                   | 22                        | s north                 | Ten Mile                           | Eaton Center         | Churchill Crossing   | 1                           | 400   | 14-15 CIP                     | 0   | 10                                   | 9   | 9  | 4.5  | 8                                      | 9   | 3.5   | 3.5   | 0  | 16                 | 7                   | 10   | 20   | 0   | 110                 | 2              |
| 121                 | 12                   | 36                        | p south                 | Nine Mile                          | Meadowbrook          | Haggerty             | 1                           | 5,280   |                               | 5   | 5                                    | 9   | 4.5  | 0  | 8                                      | 9   | 3.5   | 7   | 3.5  | 16                 | 7                   | 10   | 20   | 0   | 108                 | 4              |
| 54                  | 14                   | 20                        | s north                 | Ten Mile                           | Beck                 | Greenwood Oaks       | 1                           | 935   | 16-17 CIP                     | 0   | 5                                    | 9   | 9  | 4.5  | 0                                      | 9   | 3.5   | 7   | 0  | 8                  | 7                   | 10   | 20   | 0   | 92                  | 16             |
| 55                  | 14                   | 20                        | p west                  | Beck                               | Ten Mile             | Greenwood Oaks       | 1                           | 470   | 16-17 CIP                     | 0   | 5                                    | 9   | 9  | 4.5  | 0                                      | 9   | 3.5   | 7   | 0  | 8                  | 7                   | 10   | 20   | 0   | 92                  | 16             |
| 99                  | 16                   | 29                        | p south                 | Ten Mile                           | Beck                 | Wixom                | 2                           | 4,000   | 10-11 CIP                     | 0   | 5                                    | 4.5   | 9  | 4.5  | 4                                      | 9   | 3.5   | 7   | 0  | 8                  | 7                   | 10   | 20   | 0   | 91.5                | 19             |
| 144                 | 17                   | 23                        | p west                  | Meadowbrook                        | Grand River          | Cherry Hill          | 1                           | 700   |                               | 10  | 5                                    | 0   | 4.5  | 4.5  | 0                                      | 0   | 7   | 7   | 0  | 16                 | 7                   | 10   | 20   | 0   | 91                  | 20             |
| 84                  | 18                   | 25                        | s east                  | Meadowbrook                        | Ten Mile             | Nine Mile            | 2                           | 4,400   | 16-17 CIP                     | 0   | 5                                    | 9   | 4.5  | 4.5  | 8                                      | 0   | 3.5   | 7   | 0  | 16                 | 7                   | 10   | 20   | 0   | 94.5                | 15             |
| 154                 | 19                   | 26                        | p south                 | Ten Mile                           | Orchard Hills North  |                      | 1                           | 914   |                               | 5   | 10                                   | 9   | 4.5  | 4.5  | 4                                      | 0   | 7   | 7   | 0  | 16                 | 7                   | 10   | 20   | 0   | 104                 | 8              |
| 16                  | 20                   | 11                        | p south                 | Thirteen Mile                      | Novi Rd.             | Holmes               | 1                           | 275   |                               | 5   | 0                                    | 9   | 0  | 9  | 8                                      | 0   | 3.5   | 7   | 7  | 16                 | 7                   | 10   | 20   | 0   | 102                 | 10             |
| 73                  | 21                   | 24                        | s east                  | Meadowbrook                        | Eleven Mile          | Grand River          | 1                           | 600   | 11-12 CIP                     | 10  | 5                                    | 9   | 4.5  | 4.5  | 0                                      | 0   | 3.5   | 3.5   | 0  | 16                 | 3.5                 | 10   | 0  | 15  | 84.5                | 21             |
| 4                   | 22                   | 2                         | s south                 | Fourteen Mile                      | Novi Rd.             | Beechwalk Apartments | 1                           | 200   | with Maple Manor              | 10  | 0                                    | 4.5   | 0  | 4.5  | 4                                      | 0   | 3.5   | 0   | 3.5  | 16                 | 7                   | 10   | 20   | 0   | 83                  | 22             |
| 70                  | 23                   | 23                        | p west                  | Meadowbrook                        | Eleven Mile          | Gateway Village      | 3                           | 900   |                               | 5   | 5                                    | 4.5   | 0  | 4.5  | 0                                      | 0   | 7   | 3.5   | 7  | 16                 | 3.5                 | 10   | 15   | 0   | 81                  | 23             |
| 39                  | 24                   | 17                        | p west                  | Beck                               | Eleven Mile          | Providence           | 1                           | 1,100   |                               | 5   | 5                                    | 9   | 9  | 4.5  | 4                                      | 9   | 3.5   | 0   | 0  | 8                  | 7                   | 0  | 15   | 0   | 79                  | 24             |
| 22                  | 25                   | 13                        | s east                  | Meadowbrook                        | Twelve Mile          | I-96                 | 2                           | 2,800   |                               | 0   | 5                                    | 4.5   | 0  | 9  | 0                                      | 0   | 0   | 3.5   | 7  | 16                 | 7                   | 10   | 0  | 15  | 77                  | 25             |
| 129                 | 25                   | 1                         | s south                 | Fourteen Mile                      | Haverhill Farms      | Maples of Novi       | 1                           | 600   |                               | 0   | 5                                    | 4.5   | 0  | 4.5  | 4                                      | 0   | 7   | 3.5   | 3.5  | 8                  | 7                   | 10   | 20   | 0   | 77                  | 25             |
| 5                   | 27                   | 2                         | s south                 | Fourteen Mile                      | Beechwalk Apartments | East Lake            | 1                           | 600   |                               | 0   | 0                                    | 4.5   | 0  | 4.5  | 4                                      | 0   | 3.5   | 3.5   | 3.5  | 16                 | 7                   | 10   | 20   | 0   | 76.5                | 27             |



**Proposed Pathway and Sidewalk Segments  
in right-of-way 2011 Update  
(data through 11/1/11)**

pathways outside of road right of ways not included

**Pathway/Sidewalk Analysis/Prioritization Worksheet**

printed 11/03/2011

**TIER 1 CATEGORIES**  
**Criteria Points**

| Segment Item Number | OVERALL SEGMENT RANK | Located in Section Number | Side of Street Location | Street that segment is adjacent to | From          | To                    | Number of pieces in segment | Segment Length (feet) excluding completed pieces and developer planned pieces | notes                         | TIER 1 CATEGORIES   |                                      |   |  |  |  |   |   |   |  |                    |                     |  |  | Total Tier 1 Points  | Tier 1 Ranking |  |      |    |
|---------------------|----------------------|---------------------------|-------------------------|------------------------------------|---------------|-----------------------|-----------------------------|---|-------------------------------|---|--------------------------------------|---|--|--|--|---|---|---|--|--------------------|---------------------|--|--|--|----------------|--|------|----|
|                     |                      |                           |                         |                                    |               |                       |                             |   |                               | BICYCLE AND PEDESTRIAN ACCIDENTS (intersection accidents only included when sidewalk or pathway connection is missing -1/98 to 12/10) | TRAFFIC COUNTS (Average Daily Trips) | ACCESS TO SCHOOLS - (number elementary & intermediate schools within 1 mile ) | ACCESS TO SCHOOLS - (number of middle & high schools within 2 miles) | ACCESS TO SCHOOLS - (number of private schools over 100 students within 2 miles) | ACCESS TO PARKS (number within 1 mile) | ACCESS TO LIBRARY & CITY HALL (connected continuously by sidewalk or pathway) | ACCESS TO SHOPPING (number of shopping areas within 1 mile) | ACCESS TO PLACES OF WORSHIP (number of places of worship within 1 mile) | CONNECTED TO NEIGHBORING SIDEWALK or REGIONAL TRAIL SYSTEM | POPULATION SERVED  | SEGMENT COMPLETION  | CONSIDERABLE PUBLIC INTEREST   | NonMotorized Master Plan Recommendation                          |  |                | Novi Wixom Transportation Study Recommendation |      |    |
|                     |                      |                           |                         |                                    |               |                       |                             |   | points available per category | 5 points = 1 accident   | 0 = <10K ADTs                        | 4.5 = 1 school  | 4.5 = 1 school   | 4.5 = 1 school   | 4 = 1 park                             | 9 = connected to Library/City Hall  | 3.5 = 1 shopping area                                       | 3.5 = 1 places of worship   | 3.5 = connected to neighboring sidewalk system             | 0 = low density    | 3.5 = 1/2 to 1 mile | 10 = top 15 survey responses, resident petitions and documented segments requested by groups and government agencies | 20 = initial investment<br>15 = major corridor                   | Recommended Timeframe<br>15 = 2012-2016<br>10 = 2017-2020<br>5 = 2021-2024 |                |  |      |    |
|                     |                      |                           |                         |                                    |               |                       |                             |   | CIP sched current budget      | 10 = 2 accidents  | 5 = 10K-20K ADTs                     | 9 = 2 or more schools   | 9 = 2 or more schools  | 9 = 2 or more schools  | 8 = 2 or more parks                    |   | 7 = 2 or more shopping areas                                | 7 = 2 or more places of worship   | 7 = connected to regional trail system                     | 8 = medium density | 7 = over 1 mile     |  | greater of either NoMo Recommendation or Novi Wixom Trans. Study |  |                |  |      |    |
|                     |                      |                           |                         |                                    |               |                       |                             |   |                               | 15 = 3 accidents  | 10 = >20K ADTs                       |   |  |  |  |   |   |   |  | 16 = high density  |                     |  |  |  |                |  |      |    |
|                     |                      |                           |                         |                                    |               |                       |                             |   |                               | 20 = 4 or more accidents  |                                      |   |  |  |  |   |   |   |  |                    |                     |  |  |  |                |  |      |    |
| 116                 | 27                   | 34                        | p                       | south                              | Nine Mile     | Chelsea               | Taft                        | 1   | 4,900                         |   | 5                                    | 0   | 9  | 9  | 0                                      | 8   | 9   | 3.5   | 0  | 0                  | 16                  | 7  | 10   | 0  | 0              | 76.5   | 27   |    |
| 64                  | 29                   | 22                        | s                       | east                               | Taft          | Ten Mile              | Eleven Mile                 | 2   | 4,200                         |   | 5                                    | 0   | 9  | 9  | 0                                      | 4   | 9   | 0   | 7  | 0                  | 16                  | 7  | 10   | 0  | 0              | 76   | 29   |    |
| 30                  | 30                   | 14                        | p                       | west                               | Meadowbrook   | Twelve Mile           | Bridge                      | 4   | 2,500                         | regional  | 0                                    | 5   | 4.5  | 4.5  | 9                                      | 0   | 0   | 7   | 3.5  | 7                  | 0                   | 7  | 10   | 15   | 0              | 72.5   | 30   |    |
| 21                  | 31                   | 13                        | p                       | south                              | Twelve Mile   | Meadowbrook           | Haggerty                    | 2   | 3,900                         |   | 15                                   | 10  | 4.5  | 0  | 9                                      | 0   | 0   | 0   | 3.5  | 3.5                | 8                   | 3.5  | 0  | 0  | 15             | 72   | 31   |    |
| 36                  | 32                   | 16                        | p                       | west                               | Taft          | Eleven Mile           | Andes                       | 2   | 495                           |   | 0                                    | 0   | 9  | 9  | 4.5                                    | 4   | 9   | 0   | 3.5  | 0                  | 0                   | 7  | 10   | 15   | 0              | 71   | 32   |    |
| 58                  | 33                   | 21                        | s                       | east                               | Beck          | Sierra                | Ashley                      | 1   | 3,800                         |   | 0                                    | 5   | 9  | 9  | 4.5                                    | 4   | 9   | 3.5   | 3.5  | 0                  | 16                  | 7  | 0  | 0  | 0              | 70.5   | 33   |    |
| 60B                 | 33                   | 22                        | p                       | south                              | Eleven Mile   | Clark                 | Creek Crossing              | 1   | 225                           |   | 0                                    | 0   | 9  | 4.5  | 0                                      | 9   | 7   | 3.5   | 3.5  | 0                  | 16                  | 7  | 10   | 0  | 0              | 70.5   | 33   |    |
| 88                  | 35                   | 26                        | s                       | north                              | Nine Mile     | RR crossing           | Novi Rd.                    | 2   | 1,900                         | 14-15 CIP   | 10                                   | 0   | 9  | 9  | 0                                      | 8   | 0   | 3.5   | 7  | 0                  | 16                  | 7  | 0  | 0  | 0              | 69.5   | 35   |    |
| 18                  | 36                   | 11                        | s                       | north                              | Twelve Mile   | Novi Rd.              | Meadowbrook                 | 1   | 5,280                         |   | 10                                   | 10  | 4.5  | 0  | 9                                      | 0   | 0   | 7   | 3.5  | 0                  | 8                   | 7  | 0  | 0  | 10             | 69   | 36   |    |
| 23                  | 36                   | 13                        | p                       | east                               | Meadowbrook   | over I-96             | through MDOT ROW            | 1   | 400                           |   | 0                                    | 5   | 0  | 0  | 9                                      | 0   | 0   | 0   | 0  | 0                  | 16                  | 7  | 10   | 0  | 0              | 15   | 69   | 36 |
| 1b                  | 36                   | 1                         | s                       | south                              | Fourteen Mile | M-5                   | Haverhill Farm              | 1   | 867                           |   | 0                                    | 5   | 0  | 0  | 4.5                                    | 4   | 0   | 3.5   | 0  | 7                  | 8                   | 7  | 10   | 20   | 0              | 69   | 36   |    |
| 44                  | 39                   | 18                        | p                       | east                               | Napier        | Knights Bridge        | Island Lake                 | 1   | 2,700                         |   | 5                                    | 0   | 4.5  | 9  | 4.5                                    | 4   | 0   | 0   | 0  | 0                  | 8                   | 3.5  | 10   | 20   | 0              | 68.5   | 39   |    |
| 113                 | 39                   | 33                        | p                       | south                              | Nine Mile     | Beck                  | Taft                        | 3   | 2,900                         |   | 5                                    | 0   | 9  | 9  | 0                                      | 0   | 9   | 0   | 3.5  | 0                  | 16                  | 7  | 10   | 0  | 0              | 68.5   | 39   |    |
| 6                   | 41                   | 3                         | p                       | west                               | West Park     | Bristol Corners       | Pontiac Trail               | 2   | 2,100                         |   | 20                                   | 5   | 0  | 9  | 0                                      | 4   | 0   | 3.5   | 0  | 3.5                | 16                  | 7  | 0  | 0  | 0              | 68   | 41   |    |
| 37                  | 42                   | 16                        | s                       | north                              | Eleven Mile   | Taft                  | Beck                        | 3   | 3,800                         |   | 0                                    | 0   | 9  | 9  | 4.5                                    | 4   | 9   | 3.5   | 3.5  | 0                  | 8                   | 7  | 10   | 0  | 0              | 67.5   | 42   |    |
| 25                  | 43                   | 13                        | s                       | west                               | Haggerty      | Twelve Mile           | section line                | 2   | 4,300                         |   | 10                                   | 5   | 0  | 0  | 9                                      | 0   | 0   | 3.5   | 0  | 3.5                | 16                  | 0  | 0  | 20   | 0              | 0  | 67   | 43 |
| 87                  | 44                   | 26                        | s                       | north                              | Nine Mile     | Meadowbrook           | Venture                     | 1   | 2,100                         |   | 0                                    | 5   | 4.5  | 9  | 0                                      | 8   | 0   | 3.5   | 7  | 0                  | 16                  | 3.5  | 10   | 0  | 0              | 66.5   | 44   |    |
| 127a                | 45                   | 27                        | s                       | east                               | Novi Way      | Ten Mile              | parking lot                 | 1   | 350                           | 12-13 CIP   | 0                                    | 0   | 4.5  | 9  | 0                                      | 8   | 4.5   | 3.5   | 3.5  | 0                  | 16                  | 7  | 10   | 0  | 0              | 66   | 45   |    |
| 127b                | 45                   | 27                        | s                       | east                               | Novi Way      | parking lot           | Power Park                  | 1   | 850                           |   | 0                                    | 0   | 4.5  | 9  | 0                                      | 8   | 4.5   | 3.5   | 3.5  | 0                  | 16                  | 7  | 10   | 0  | 0              | 66   | 45   |    |
| 16b                 | 45                   | 11                        | p                       | south                              | Thirteen Mile | Sunshine              | Holmes                      | 1   | 272                           |   | 5                                    | 0   | 9  | 0  | 9                                      | 4   | 0   | 3.5   | 3.5  | 7                  | 8                   | 7  | 10   | 0  | 0              | 66   | 45   |    |
| 53                  | 48                   | 20                        | p                       | west                               | Beck          | Eleven Mile           | Kirkway Place               | 1   | 1,300                         |   | 0                                    | 5   | 9  | 9  | 4.5                                    | 4   | 0   | 3.5   | 0  | 0                  | 16                  | 3.5  | 10   | 0  | 0              | 64.5   | 48   |    |
| 3                   | 49                   | 1                         | s                       | north                              | Thirteen Mile | Haggerty Rd.          | M-5                         | 2   | 1,800                         |   | 5                                    | 5   | 4.5  | 0  | 9                                      | 0   | 0   | 0   | 3.5  | 7                  | 8                   | 7  | 10   | 15   | 0              | 64   | 49   |    |
| 66                  | 49                   | 23                        | p                       | south                              | Grand River   | Novi Rd.              | Market                      | 3   | 1,000                         |   | 15                                   | 10  | 0  | 4.5  | 4.5                                    | 0   | 0   | 7   | 0  | 0                  | 16                  | 7  | 0  | 0  | 0              | 64   | 49   |    |
| 68                  | 51                   | 23                        | p                       | south                              | Grand River   | Funeral Home          | Meadowbrook                 | 1   | 800                           |   | 10                                   | 10  | 4.5  | 4.5  | 4.5                                    | 0   | 0   | 7   | 3.5  | 0                  | 16                  | 3.5  | 0  | 0  | 0              | 0  | 63.5 | 51 |
| 24                  | 52                   | 13                        | s                       | east                               | Meadowbrook   | I-96                  | Eleven Mile                 | 1   | 700                           |   | 0                                    | 5   | 0  | 0  | 9                                      | 0   | 0   | 0   | 0  | 7                  | 16                  | 0  | 10   | 0  | 15             | 62   | 52   |    |
| 115                 | 52                   | 34                        | s                       | west                               | Novi Rd.      | Timber Ridge developm | City Limits                 | 1   | 1,600                         |   | 5                                    | 5   | 9  | 9  | 0                                      | 4   | 0   | 7   | 0  | 0                  | 16                  | 7  | 0  | 0  | 0              | 62   | 52   |    |
| 82B                 | 52                   | 25                        | s                       | west                               | Haggerty      | Pavillion Ct Apart.   | Nine Mile                   | 1   | 492                           |   | 10                                   | 10  | 4.5  | 0  | 0                                      | 4   | 0   | 3.5   | 7  | 3.5                | 16                  | 3.5  | 0  | 0  | 0              | 62   | 52   |    |
|                     |                      |                           |                         |                                    |               |                       |                             |   | 13-14 CIP regional link       |   |                                      |   |  |  |  |   |   |   |  |                    |                     |  |  |  |                |  |      |    |
| 48                  | 55                   | 19                        | p                       | west                               | Wixom         | Ten Mile              | Island Lake                 | 1   | 500                           |   | 0                                    | 0   | 4.5  | 9  | 4.5                                    | 4   | 0   | 0   | 3.5  | 0                  | 8                   | 7  | 0  | 20   | 0              | 60.5   | 55   |    |
| 79                  | 55                   | 24                        | s                       | east                               | Meadowbrook   | Ten Mile              | Grand River                 | 3   | 2,000                         |   | 10                                   | 5   | 9  | 0  | 4.5                                    | 0   | 0   | 7   | 7  | 0                  | 8                   | 0  | 10   | 0  | 0              | 60.5   | 55   |    |
| 77                  | 57                   | 24                        | s                       | west                               | Haggerty      | Grand River           | section line                | 1   | 3,100                         |   | 5                                    | 5   | 4.5  | 0  | 4.5                                    | 4   | 0   | 7   | 0  | 3.5                | 8                   | 3.5  | 0  | 15   | 0              | 60   | 57   |    |
| 120                 | 57                   | 36                        | s                       | west                               | Haggerty      | Eight Mile            | Nine Mile                   | 4   | 2,800                         |   | 5                                    | 10  | 4.5  | 0  | 0                                      | 0   | 0   | 7   | 3.5  | 7                  | 16                  | 7  | 0  | 0  | 0              | 60   | 57   |    |



**Proposed Pathway and Sidewalk Segments  
in right-of-way 2011 Update  
(data through 11/1/11)**

pathways outside of road right of ways not included

**Pathway/Sidewalk Analysis/Prioritization Worksheet**

printed 11/03/2011

| Segment Item Number | OVERALL SEGMENT RANK | Located in Section Number | Side of Street Location | Street that segment is adjacent to | From        | To                     | Number of pieces in segment | Segment Length (feet) excluding completed pieces and developer planned pieces | notes | TIER 1 CATEGORIES   |                                      |   |  |  |  |   |   |   |  |                    |                     |  |  |   | Total Tier 1 Points | Tier 1 Ranking |  |  |
|---------------------|----------------------|---------------------------|-------------------------|------------------------------------|-------------|------------------------|-----------------------------|---|-------|---|--------------------------------------|---|--|--|--|---|---|---|--|--------------------|---------------------|--|--|---|---------------------|----------------|--|--|
|                     |                      |                           |                         |                                    |             |                        |                             |   |       | BICYCLE AND PEDESTRIAN ACCIDENTS (intersection accidents only included when sidewalk or pathway connection is missing -1/98 to 12/10) | TRAFFIC COUNTS (Average Daily Trips) | ACCESS TO SCHOOLS - (number elementary & intermediate schools within 1 mile ) | ACCESS TO SCHOOLS - (number of middle & high schools within 2 miles) | ACCESS TO SCHOOLS - (number of private schools over 100 students within 2 miles) | ACCESS TO PARKS (number within 1 mile) | ACCESS TO LIBRARY & CITY HALL (connected continuously by sidewalk or pathway) | ACCESS TO SHOPPING (number of shopping areas within 1 mile) | ACCESS TO PLACES OF WORSHIP (number of places of worship within 1 mile) | CONNECTED TO NEIGHBORING SIDEWALK or REGIONAL TRAIL SYSTEM | POPULATION SERVED  | SEGMENT COMPLETION  | CONSIDERABLE PUBLIC INTEREST   | NonMotorized Master Plan Recommendation        | Novi Wixom Transportation Study Recommendation                        |                     |                |  |  |
|                     |                      |                           |                         |                                    |             |                        |                             |   |       | 5 points = 1 accident   | 0 = <10K ADTs                        | 4.5 = 1 school  | 4.5 = 1 school   | 4.5 = 1 school   | 4 = 1 park                             | 9 = connected to Library/City Hall  | 3.5 = 1 shopping area                                       | 3.5 = 1 places of worship   | 3.5 = connected to neighboring sidewalk system             | 0 = low density    | 3.5 = 1/2 to 1 mile | 10 = top 15 survey responses, resident petitions and documented segments requested by groups and government agencies | 20 = initial investment<br>15 = major corridor | Recommended Timeframe 15 = 2012-2016<br>10= 2017-2020<br>5= 2021-2024 |                     |                |  |  |
|                     |                      |                           |                         |                                    |             |                        |                             |   |       | 10 = 2 accidents  | 5 = 10K-20K ADTs                     | 9 = 2 or more schools   | 9 = 2 or more schools  | 9 = 2 or more schools  | 8 = 2 or more parks                    |   | 7 = 2 or more shopping areas                                | 7 = 2 or more places of worship   | 7 = connected to regional trail system                     | 8 = medium density | 7 = over 1 mile     |  |  |   |                     |                |  |  |
|                     |                      |                           |                         |                                    |             |                        |                             |   |       | 15 = 3 accidents  | 10 = >20K ADTs                       |   |  |  |  |   |   |   |  | 16 = high density  |                     |  |  |   |                     |                |  |  |
|                     |                      |                           |                         |                                    |             |                        |                             |   |       | 20 = 4 or more accidents  |                                      |   |  |  |  |   |   |   |  |                    |                     |  |  |   |                     |                |  |  |
|                     |                      |                           |                         |                                    |             |                        |                             |   |       |   |                                      |   |  |  |  |   |   |   |  |                    |                     |  |  |   |                     |                |  |  |
| 31                  | 59                   | 15                        | s                       | south                              | Twelve Mile | Novi Rd.               | Taft                        | 2   | 2,000 |   |                                      |   |  |  |  |   |   |   |  |                    |                     |  |  |   |                     |                |  |  |
| 38                  | 59                   | 16                        | s                       | east                               | Beck        | Eleven Mile            | Grand River                 | 2   | 2,100 |   |                                      |   |  |  |  |   |   |   |  |                    |                     |  |  |   |                     |                |  |  |
| 168                 | 59                   | 14                        | p                       | east                               | Novi        | across 96              |                             | 1   | 2077  |   |                                      |   |  |  |  |   |   |   |  |                    |                     |  |  |   |                     |                |  |  |
| 7                   | 62                   | 3                         | s                       | south                              | South Lake  | Elm                    | Henning                     | 1   | 2,800 |   |                                      |   |  |  |  |   |   |   |  |                    |                     |  |  |   |                     |                |  |  |
| 52                  | 62                   | 20                        | p                       | south                              | Eleven Mile | Wixom                  | Beck                        | 1   | 5,000 |   |                                      |   |  |  |  |   |   |   |  |                    |                     |  |  |   |                     |                |  |  |
| 97                  | 62                   | 29                        | p                       | west                               | Beck        | Ten Mile               | Nine Mile                   | 3   | 3,400 |   |                                      |   |  |  |  |   |   |   |  |                    |                     |  |  |   |                     |                |  |  |
| 29                  | 65                   | 14                        | p                       | south                              | Twelve Mile | west of Meadowbrook    | Meadowbrook                 | 1   | 400   |   |                                      |   |  |  |  |   |   |   |  |                    |                     |  |  |   |                     |                |  |  |
| 169                 | 65                   | 17                        | p                       | west                               | Beck        | across 96              |                             | 1   | 1346  |   |                                      |   |  |  |  |   |   |   |  |                    |                     |  |  |   |                     |                |  |  |
| 72                  | 67                   | 23                        | p                       | north                              | Grand River | Town Center            | Amstaff building            | 1   | 1,000 |   |                                      |   |  |  |  |   |   |   |  |                    |                     |  |  |   |                     |                |  |  |
| 43                  | 68                   | 18                        | p                       | west                               | Wixom       | Twelve Mile            | Island Lake                 | 3   | 2,000 |   |                                      |   |  |  |  |   |   |   |  |                    |                     |  |  |   |                     |                |  |  |
| 19                  | 69                   | 12                        | s                       | north                              | Twelve Mile | Meadowbrook            | Cabot                       | 2   | 3,900 |   |                                      |   |  |  |  |   |   |   |  |                    |                     |  |  |   |                     |                |  |  |
| 12                  | 70                   | 9                         | s                       | north                              | Twelve Mile | West Park              | Liberty Park                | 1   | 2,770 |   |                                      |   |  |  |  |   |   |   |  |                    |                     |  |  |   |                     |                |  |  |
| 35                  | 71                   | 15                        | s                       | east                               | Taft        | Eleven Mile            | Grand River                 | 1   | 1,600 |   |                                      |   |  |  |  |   |   |   |  |                    |                     |  |  |   |                     |                |  |  |
| 75                  | 71                   | 24                        | p                       | north                              | Grand River | Seeley                 | Meadowbrook                 | 2   | 1,600 |   |                                      |   |  |  |  |   |   |   |  |                    |                     |  |  |   |                     |                |  |  |
| 32                  | 73                   | 15                        | s                       | west                               | Novi Rd.    | Twelve Mile            | I-96 south side             | 1   | 3,800 |   |                                      |   |  |  |  |   |   |   |  |                    |                     |  |  |   |                     |                |  |  |
| 14                  | 74                   | 10                        | s                       | north                              | Twelve Mile | Carlton Forest         | BP                          | 1   | 600   |   |                                      |   |  |  |  |   |   |   |  |                    |                     |  |  |   |                     |                |  |  |
| 51                  | 74                   | 20                        | s                       | north                              | Ten Mile    | Wixom                  | Woodham                     | 1   | 2,800 |   |                                      |   |  |  |  |   |   |   |  |                    |                     |  |  |   |                     |                |  |  |
| 114                 | 76                   | 34                        | s                       | east                               | Taft        | Nine Mile              | City Limits                 | 1   | 2,600 |   |                                      |   |  |  |  |   |   |   |  |                    |                     |  |  |   |                     |                |  |  |
| 8                   | 77                   | 4                         | p                       | west                               | West Park   | Bristol Corners        | West                        | 2   | 1,500 |   |                                      |   |  |  |  |   |   |   |  |                    |                     |  |  |   |                     |                |  |  |
| 78                  | 78                   | 24                        | p                       | south                              | Grand River | Meadowbrook            | Haggerty                    | 4   | 3,000 |   |                                      |   |  |  |  |   |   |   |  |                    |                     |  |  |   |                     |                |  |  |
| 67                  | 79                   | 23                        | p                       | south                              | Grand River | Fountain Park          | Funeral Home                | 1   | 1,100 |   |                                      |   |  |  |  |   |   |   |  |                    |                     |  |  |   |                     |                |  |  |
| 10                  | 80                   | 4                         | s                       | east                               | Beck        | K & S Plaza            | K & S Plaza                 | 1   | 200   | 13-14 CIP   |                                      |   |  |  |  |   |   |   |  |                    |                     |  |  |   |                     |                |  |  |
| 34                  | 80                   | 15                        | s                       | north                              | Eleven Mile | Clark                  | Taft                        | 1   | 2,600 |   |                                      |   |  |  |  |   |   |   |  |                    |                     |  |  |   |                     |                |  |  |
| 163                 | 80                   | 3                         | p                       | north                              | South Lake  | Lakeshore Park         | Landings Park               | 1   | 1304  |   |                                      |   |  |  |  |   |   |   |  |                    |                     |  |  |   |                     |                |  |  |
| 28                  | 83                   | 14                        | p                       | east                               | Novi Rd.    | south Twelve Oaks entr | North Twelve Oaks entra     | 1   | 1,300 |   |                                      |   |  |  |  |   |   |   |  |                    |                     |  |  |   |                     |                |  |  |
| 11                  | 84                   | 9                         | s                       | north                              | Twelve Mile | Novi Concrete          | West Park                   | 1   | 1,100 |   |                                      |   |  |  |  |   |   |   |  |                    |                     |  |  |   |                     |                |  |  |
| 69                  | 85                   | 23                        | s                       | south                              | Eleven Mile | Town Center            | Meadowbrook                 | 2   | 3,500 |   |                                      |   |  |  |  |   |   |   |  |                    |                     |  |  |   |                     |                |  |  |
| 112                 | 85                   | 33                        | s                       | east                               | Beck        | Nine Mile              | City Limits                 | 1   | 1,400 |   |                                      |   |  |  |  |   |   |   |  |                    |                     |  |  |   |                     |                |  |  |
| 17                  | 87                   | 11                        | s                       | east                               | Old Novi    | Novi Rd.               | Thirteen Mile               | 1   | 2,300 |   |                                      |   |  |  |  |   |   |   |  |                    |                     |  |  |   |                     |                |  |  |
| 153                 | 88                   | 36                        | s                       | east                               | Haggerty    | limits                 | south                       | 1   | 520   |   |                                      |   |  |  |  |   |   |   |  |                    |                     |  |  |   |                     |                |  |  |
| 33                  | 89                   | 15                        | s                       | west                               | Novi Rd.    | I-96                   | Crecent                     | 2   | 400   |   |                                      |   |  |  |  |   |   |   |  |                    |                     |  |  |   |                     |                |  |  |
| 162                 | 90                   | 3                         | s                       | north                              | South Lake  | Lakeshore Park         | West Park                   | 1   | 5177  |   |                                      |   |  |  |  |   |   |   |  |                    |                     |  |  |   |                     |                |  |  |
| 164                 | 90                   | 3                         | p                       | south                              | South Lake  | Lakeshore Park         | Elm                         | 1   | 918   |   |                                      |   |  |  |  |   |   |   |  |                    |                     |  |  |   |                     |                |  |  |



**Proposed Pathway and Sidewalk Segments  
in right-of-way 2011 Update  
(data through 11/1/11)**

pathways outside of road right of ways not included

**Pathway/Sidewalk Analysis/Prioritization Worksheet**

printed 11/03/2011

|                     |                      | <b>TIER 1 CATEGORIES</b>  |  |   |               |                     |                             |   |                          |   |                                      |   |  |  |  |   |   |   |  |                    |                     |  |  |  |                     |                |     |
|---------------------|----------------------|---------------------------|--|---|---------------|---------------------|-----------------------------|---|--------------------------|---|--------------------------------------|---|--|--|--|---|---|---|--|--------------------|---------------------|--|--|--|---------------------|----------------|-----|
|                     |                      | <b>Criteria Points</b>    |  |   |               |                     |                             |   |                          |   |                                      |   |  |  |  |   |   |   |  |                    |                     |  |  |  |                     |                |     |
| Segment Item Number | OVERALL SEGMENT RANK | Located in Section Number | Side of Street Location  | Street that segment is adjacent to  | From          | To                  | Number of pieces in segment | Segment Length (feet) excluding completed pieces and developer planned pieces | notes                    | BICYCLE AND PEDESTRIAN ACCIDENTS (intersection accidents only included when sidewalk or pathway connection is missing -1/98 to 12/10) | TRAFFIC COUNTS (Average Daily Trips) | ACCESS TO SCHOOLS - (number elementary & intermediate schools within 1 mile ) | ACCESS TO SCHOOLS - (number of middle & high schools within 2 miles) | ACCESS TO SCHOOLS - (number of private schools over 100 students within 2 miles) | ACCESS TO PARKS (number within 1 mile) | ACCESS TO LIBRARY & CITY HALL (connected continuously by sidewalk or pathway) | ACCESS TO SHOPPING (number of shopping areas within 1 mile) | ACCESS TO PLACES OF WORSHIP (number of places of worship within 1 mile) | CONNECTED TO NEIGHBORING SIDEWALK or REGIONAL TRAIL SYSTEM | POPULATION SERVED  | SEGMENT COMPLETION  | CONSIDERABLE PUBLIC INTEREST   | NonMotorized Master Plan Recommendation        | Novi Wixom Transportation Study Recommendation                             | Total Tier 1 Points | Tier 1 Ranking |     |
|                     |                      |                           | s= 6 ft. sidewalk - p= 8 ft. pathway c=crossing r=recreational trail |   |               |                     |                             |   |                          | points available per category   | 5 points = 1 accident                | 4.5 = 1 school  | 4.5 = 1 school   | 4.5 = 1 school   | 4 = 1 park                             | 9 = connected to Library/City Hall  | 3.5 = 1 shopping area                                       | 3.5 = 1 places of worship   | 3.5 = connected to neighboring sidewalk system             | 0 = low density    | 3.5 = 1/2 to 1 mile | 10 = top 15 survey responses, resident petitions and documented segments requested by groups and government agencies | 20 = initial investment<br>15 = major corridor | Recommended Timeframe<br>15 = 2012-2016<br>10 = 2017-2020<br>5 = 2021-2024 |                     |                |     |
|                     |                      |                           |  | equals segments with pathways or sidewalks on most of the opposite side of the street - note that these segments may be critical for system connectivity and must be analysed separately for connectivity     |               |                     |                             |   |                          | 10 = 2 accidents  | 5 = 10K-20K ADTs                     | 9 = 2 or more schools   | 9 = 2 or more schools  | 9 = 2 or more schools  | 8 = 2 or more parks                    |   | 7 = 2 or more shopping areas                                | 7 = 2 or more places of worship   | 7 = connected to regional trail system                     | 8 = medium density | 7 = over 1 mile     |  |  |  |                     |                |     |
|                     |                      |                           |  | equals segments with a higher ranking segment planned for the opposite side of the street - note that these segments may be critical for system connectivity and must be analysed separately for connectivity |               |                     |                             |   | CIP sched current budget | 15 = 3 accidents  | 10 = >20K ADTs                       |   |  |  |  |   |   |   |  | 16 = high density  |                     | greater of either NoMo Recommendation or Novi Wixom Trans. Study   |  |  |                     |                |     |
| 165                 | 90                   | 3                         | p  | south   | South Lake    | Henning             | Lakeshore Park              | 1   | 2055                     |   | 0                                    | 0   | 4.5  | 9  | 4.5                                    | 8   | 0   | 0   | 0  | 0                  | 16                  | 0  | 0  | 0  | 0                   | 42             | 90  |
| 1a                  | 90                   | 1                         | s  | south   | Fourteen Mile | Haggerty Rd.        | M-5                         | 1   | 1,620                    |   | 0                                    | 5   | 0  | 0  | 4.5                                    | 4   | 0   | 3.5   | 0  | 7                  | 8                   | 0  | 10   | 0  | 0                   | 42             | 90  |
| 40                  | 94                   | 17                        | p  | south   | Grand River   | Providence Hospital | Wixom                       | 3   | 900                      |   | 0                                    | 5   | 4.5  | 4.5  | 4                                      | 0   | 7   | 0   | 3.5  | 0                  | 7                   | 0  | 0  | 0  | 0                   | 40             | 94  |
| 76                  | 94                   | 24                        | p  | north   | Grand River   | Seeley              | Haggerty                    | 1   | 200                      | 16-17 CIP   | 0                                    | 5   | 4.5  | 0  | 4.5                                    | 4   | 0   | 7   | 0  | 3.5                | 8                   | 3.5  | 0  | 0  | 0                   | 40             | 94  |
| 149                 | 94                   | 15                        | p  | east  | Clark         | Eleven Mile         | Grand River                 | 1   | 208                      |   | 0                                    | 0   | 9  | 4.5  | 4.5                                    | 0   | 0   | 3.5   | 3.5  | 0                  | 8                   | 7  | 0  | 0  | 0                   | 40             | 94  |
| 74                  | 97                   | 24                        | s  | east  | Seeley        | Eleven Mile         | Grand River                 | 1   | 2,700                    |   | 0                                    | 0   | 4.5  | 0  | 4.5                                    | 4   | 0   | 7   | 3.5  | 0                  | 16                  | 0  | 0  | 0  | 0                   | 39.5           | 97  |
| 41                  | 98                   | 17                        | s  | east  | Wixom         | Target              | Deerfield Elementary        | 1   | 1,100                    |   | 0                                    | 5   | 4.5  | 4.5  | 4                                      | 9   | 3.5   | 0   | 0  | 0                  | 0                   | 3.5  | 0  | 0  | 0                   | 38.5           | 98  |
| 111                 | 99                   | 32                        | p  | south   | Nine Mile     | Garfield            | Beck                        | 2   | 6,000                    |   | 5                                    | 0   | 4.5  | 9  | 0                                      | 0   | 0   | 0   | 3.5  | 0                  | 0                   | 3.5  | 10   | 0  | 0                   | 35.5           | 99  |
| 98                  | 100                  | 29                        | s  | north   | Nine Mile     | Beck                | Garfield                    | 2   | 4,800                    |   | 0                                    | 0   | 4.5  | 9  | 0                                      | 0   | 0   | 0   | 0  | 0                  | 8                   | 3.5  | 10   | 0  | 0                   | 35             | 100 |
| 47                  | 101                  | 19                        | s  | north   | Ten Mile      | Napier              | Island Lake                 | 1   | 1,600                    |   | 0                                    | 5   | 0  | 9  | 4.5                                    | 4   | 0   | 0   | 3.5  | 0                  | 8                   | 0  | 0  | 0  | 0                   | 34             | 101 |
| 110                 | 101                  | 32                        | p  | west  | Beck          | Eight Mile          | Nine Mile                   | 2   | 3,800                    |   | 0                                    | 5   | 9  | 9  | 0                                      | 4   | 0   | 0   | 3.5  | 0                  | 0                   | 3.5  | 0  | 0  | 0                   | 34             | 101 |
| 50                  | 103                  | 20                        | s  | east  | Wixom         | Ten Mile            | Island Lake                 | 1   | 1,300                    |   | 0                                    | 0   | 4.5  | 9  | 4.5                                    | 4   | 0   | 0   | 3.5  | 0                  | 8                   | 0  | 0  | 0  | 0                   | 33.5           | 103 |
| 2                   | 104                  | 1                         | s  | west  | Haggerty      | Fourteen Mile       | Thirteen Mile               | 2   | 1,800                    |   | 0                                    | 5   | 0  | 4.5  | 0                                      | 0   | 3.5   | 0   | 3.5  | 0                  | 8                   | 3.5  | 0  | 0  | 0                   | 32.5           | 104 |
| 49                  | 104                  | 19                        | s  | north   | Ten Mile      | Wixom               | Island Lake                 | 1   | 200                      |   | 0                                    | 0   | 0  | 9  | 4.5                                    | 4   | 0   | 0   | 3.5  | 0                  | 8                   | 3.5  | 0  | 0  | 0                   | 32.5           | 104 |
| 26                  | 106                  | 13                        | s  | north   | Eleven Mile   | Meadowbrook         | Seeley                      | 1   | 900                      |   | 0                                    | 0   | 0  | 0  | 4.5                                    | 0   | 0   | 3.5   | 0  | 7                  | 16                  | 0  | 0  | 0  | 0                   | 31             | 106 |
| 161                 | 107                  | 16                        | p  | east  | Beck          | across 96           |                             | 1   | 1387                     |   | 0                                    | 5   | 0  | 4.5  | 0                                      | 0   | 0   | 3.5   | 0  | 0                  | 7                   | 10   | 0  | 0  | 0                   | 30             | 107 |
| 45                  | 108                  | 18                        | s  | south   | Twelve Mile   | Knights Bridge Gate | City Limits                 | 1   | 2,700                    |   | 0                                    | 0   | 4.5  | 4.5  | 4.5                                    | 4   | 0   | 3.5   | 0  | 0                  | 8                   | 0  | 0  | 0  | 0                   | 29             | 108 |
| 46                  | 109                  | 19                        | p  | east  | Napier        | Island Lake         | Ten Mile                    | 1   | 1,300                    |   | 0                                    | 0   | 0  | 9  | 4.5                                    | 0   | 0   | 0   | 3.5  | 0                  | 8                   | 3.5  | 0  | 0  | 0                   | 28.5           | 109 |
| 109                 | 110                  | 32                        | p  | north   | Eight Mile    | Garfield            | Beck                        | 3   | 2,600                    |   | 5                                    | 5   | 4.5  | 9  | 0                                      | 4   | 0   | 0   | 0  | 0                  | 0                   | 0  | 0  | 0  | 0                   | 27.5           | 110 |
| 155                 | 111                  | 30                        | p  | south   | Ten Mile      | Links of Novi       |                             | 1   | 1693                     |   | 0                                    | 5   | 0  | 4.5  | 4.5                                    | 4   | 0   | 0   | 7  | 0                  | 0                   | 0  | 0  | 0  | 0                   | 25             | 111 |
| 20                  | 112                  | 12                        | s  | west  | Haggerty      | Thirteen Mile       | Twelve Mile                 | 4   | 1,900                    |   | 0                                    | 5   | 4.5  | 0  | 4.5                                    | 0   | 0   | 0   | 0  | 3.5                | 0                   | 7  | 0  | 0  | 0                   | 24.5           | 112 |
| 105                 | 113                  | 31                        | p  | north   | Eight Mile    | Napier              | Garfield                    | 1   | 5,300                    |   | 5                                    | 5   | 0  | 4.5  | 0                                      | 8   | 0   | 0   | 0  | 0                  | 0                   | 0  | 0  | 0  | 0                   | 22.5           | 113 |
| 156                 | 114                  | 30                        | p  | south   | Ten Mile      | Links of Novi       |                             | 1   | 1008                     |   | 0                                    | 5   | 0  | 4.5  | 4.5                                    | 0   | 0   | 0   | 7  | 0                  | 0                   | 0  | 0  | 0  | 0                   | 21             | 114 |
| 157                 | 114                  | 30                        | p  | south   | Ten Mile      | Links of Novi       |                             | 1   | 1503                     |   | 0                                    | 5   | 0  | 4.5  | 4.5                                    | 0   | 0   | 0   | 7  | 0                  | 0                   | 0  | 0  | 0  | 0                   | 21             | 114 |
| 159                 | 114                  | 19                        | s  | north   | Ten Mile      | Oak Point Church    | Oak Point Church            | 1   | 309                      |   | 0                                    | 5   | 0  | 4.5  | 4.5                                    | 0   | 0   | 0   | 7  | 0                  | 0                   | 0  | 0  | 0  | 0                   | 21             | 114 |
| 160                 | 114                  | 19                        | s  | north   | Ten Mile      | Island Lake         | Oak Point Church            | 1   | 372                      |   | 0                                    | 5   | 0  | 4.5  | 4.5                                    | 0   | 0   | 0   | 7  | 0                  | 0                   | 0  | 0  | 0  | 0                   | 21             | 114 |
| 167                 | 118                  | 9                         | p  | south   | West          | West Park           | City Limits                 | 1   | 1377                     |   | 0                                    | 0   | 0  | 9  | 0                                      | 4   | 0   | 0   | 0  | 0                  | 0                   | 7  | 0  | 0  | 0                   | 20             | 118 |
| 27                  | 119                  | 14                        | p  | north   | Eleven Mile   | Pinnacle            | Town Center                 | 2   | 1,500                    |   | 0                                    | 0   | 0  | 0  | 4.5                                    | 0   | 0   | 7   | 0  | 0                  | 0                   | 0  | 0  | 0  | 0                   | 18.5           | 119 |
| 100                 | 119                  | 30                        | p  | south   | Ten Mile      | Wixom               | Napier                      | 4   | 1,200                    |   | 0                                    | 5   | 0  | 9  | 4.5                                    | 0   | 0   | 0   | 0  | 0                  | 0                   | 0  | 0  | 0  | 0                   | 18.5           | 119 |
| 103                 | 121                  | 31                        | p  | east  | Napier        | Park Place          | Community Sports Park       | 1   | 1,200                    |   | 0                                    | 0   | 0  | 4.5  | 0                                      | 8   | 0   | 0   | 0  | 0                  | 0                   | 3.5  | 0  | 0  | 0                   | 16             | 121 |
| 104                 | 121                  | 31                        | p  | east  | Napier        | Eight Mile          | Community Sports Park       | 1   | 2,100                    |   | 0                                    | 0   | 0  | 4.5  | 0                                      | 8   | 0   | 0   | 0  | 0                  | 0                   | 3.5  | 0  | 0  | 0                   | 16             | 121 |
| 158                 | 121                  | 30                        | p  | east  | Napier        | Links of Novi       |                             | 1   | 1321                     |   | 0                                    | 0   | 0  | 4.5  | 4.5                                    | 0   | 0   | 0   | 7  | 0                  | 0                   | 0  | 0  | 0  | 0                   | 16             | 121 |
| 106                 | 124                  | 31                        | p  | west  | Garfield      | Eight Mile          | Nine Mile                   | 1   | 5,300                    |   | 5                                    | 0   | 0  | 4.5  | 0                                      | 4   | 0   | 0   | 0  | 0                  | 0                   | 0  | 0  | 0  | 0                   | 13.5           | 124 |







**Proposed Pathway and Sidewalk Segments  
in right-of-way 2011 Update  
(data through 11/1/11)**

pathways outside of road right of ways not included

**Pathway/Sidewalk Analysis/Prioritization Worksheet**

printed 11/03/2011

| Segment Item Number | OVERALL SEGMENT RANK | Located in Section Number | Side of Street Location   | Street that segment is adjacent to  | From          | To                  | TIER 2 CATEGORIES Criteria Points<br>(only top 20 Tier 1 segments receive tier 2 points) |  |  |  |  | TOTALS              |              |                             | OTHER INFO                         |   |         |
|---------------------|----------------------|---------------------------|---|---|---------------|---------------------|--|--|--|--|--|---------------------|--------------|-----------------------------|------------------------------------|---|---------|
|                     |                      |                           |   |   |               |                     | EASE OF CONSTRUCTION (easy/hard)   | RIGHT-OF-WAY AVAILABILITY (based on % available) | OTHER FUNDING SOURCES (based on % available) | OPOSITE SIDE Sidewalk or Pathway - Road less than 12,000 ADT and 35 mph or less existing or planned with higher priority ranking | PRIVATE DEVELOPMENT POTENTIAL <Negative Points>  | TOTAL TIER 2 POINTS | TOTAL POINTS | TOTAL POINTS (OVERALL) RANK | Greenway/Pathway Study Survey Rank | Opposite side of road pathway or sidewalk |         |
|                     |                      |                           | s = 6 ft. sidewalk - p = 8 ft. pathway c = crossing rt=recreation trail |   |               |                     | 0 = hard   | 0 = 0%   | 0 = 0%                                       | -20 = complete Section link<br>-10 = one direction Section link  | 0 = little development potential<br>-2 = partial segment development potential within 10 years<br>-4 = development potential within 10 years<br>-8 = site plan submitted<br><br>-16 = development under construction |                     |              |                             |                                    |   |         |
|                     |                      |                           |   | equals segments with pathways or sidewalks on most of the opposite side of the street - note that these segments may be critical for system connectivity and must be analysed separately for connectivity     |               |                     | 8 = medium hard  | 4.5 = 25%  | 4.5 = 25%                                    |  |  |                     |              |                             |                                    |   |         |
|                     |                      |                           |   | equals segments with a higher ranking segment planned for the opposite side of the street - note that these segments may be critical for system connectivity and must be analysed separately for connectivity |               |                     | 16 = easy  | 9 = 50%  | 9 = 50%                                      |  |  |                     |              |                             |                                    |   |         |
| 65                  | 1                    | 23                        | p   | east  | Novi Rd.      | Grand River         | Ten Mile   | 16   | 18   | 18   | 0  | 0                   | 52           | 148.5                       | 1                                  | 31  | no      |
| 92                  | 2                    | 27                        | s   | west  | Novi Rd.      | Ten Mile            | Nine Mile  | 0  | 9  | 0  | 0  | 0                   | 9            | 132                         | 2                                  | 31  | no      |
| 61                  | 3                    | 22                        | s   | west  | Novi Rd.      | Cemetery            | Pine Ridge Center  | 8  | 13.5   | 18   | 0  | 0                   | 39.5         | 131.5                       | 3                                  | 31  | n/a     |
| 81                  | 4                    | 25                        | p   | south   | Ten Mile      | Meadowbrook         | Haggerty   | 8  | 9  | 0  | 0  | 0                   | 17           | 126                         | 4                                  | 14  | yes     |
| 145                 | 5                    | 23                        | s   | north   | Ten Mile      | Catherine Ind. Park | Brookhaven   | 8  | 9  | 0  | 0  | 0                   | 17           | 124.5                       | 5                                  | 14  | no      |
| 90                  | 6                    | 26                        | p   | south   | Ten Mile      | Novi Rd.            | Chipmunk   | 4  | 13.5   | 0  | 0  | 0                   | 17.5         | 121.5                       | 6                                  | 14  | no      |
| 9                   | 7                    | 4                         | s   | south   | Pontiac Trail | West Park           | Beck   | 16   | 0  | 0  | 0  | 0                   | 16           | 121                         | 7                                  | 31  | no      |
| 80B                 | 8                    | 24                        | s   | north   | Ten Mile      | Meadowbrook         | Willowbrook Estates  | 16   | 0  | 0  | 0  | 0                   | 16           | 120.5                       | 8                                  | 31  | no      |
| 89                  | 9                    | 26                        | p   | east  | Novi Rd.      | Ten Mile            | Ice Arena  | 0  | 18   | 0  | 0  | 0                   | 18           | 116                         | 9                                  | 31  | yes     |
| 93                  | 10                   | 27                        | s   | north   | Nine Mile     | Novi Rd.            | Taft   | 8  | 9  | 0  | 0  | 0                   | 17           | 113.5                       | 10                                 | 5   | no      |
| 119                 | 11                   | 36                        | s   | east  | Meadowbrook   | Eight Mile          | Nine Mile  | 16   | 13.5   | 0  | -20  | 0                   | 9.5          | 110                         | 11                                 | 14  | yes     |
| 62                  | 12                   | 22                        | s   | north   | Ten Mile      | Eaton Center        | Churchill Crossing   | 0  | 0  | 0  | 0  | 0                   | 0            | 109.5                       | 12                                 | 9   | yes     |
| 121                 | 12                   | 36                        | p   | south   | Nine Mile     | Meadowbrook         | Haggerty   | 4  | 18   | 0  | -20  | 0                   | 2            | 109.5                       | 12                                 | 1   | no      |
| 54                  | 14                   | 20                        | s   | north   | Ten Mile      | Beck                | Greenwood Oaks   | 16   | 0  | 0  | 0  | 0                   | 16           | 108                         | 14                                 | 14  | no      |
| 55                  | 14                   | 20                        | p   | west  | Beck          | Ten Mile            | Greenwood Oaks   | 16   | 0  | 0  | 0  | 0                   | 16           | 108                         | 14                                 | 9   | most    |
| 99                  | 16                   | 29                        | p   | south   | Ten Mile      | Beck                | Wixom  | 16   | 0  | 0  | 0  | 0                   | 16           | 107.5                       | 16                                 | 14  | no      |
| 144                 | 17                   | 23                        | p   | west  | Meadowbrook   | Grand River         | Cherry Hill  | 16   | 0  | 0  | 0  | 0                   | 16           | 107                         | 17                                 | none                                      | no      |
| 84                  | 18                   | 25                        | s   | east  | Meadowbrook   | Ten Mile            | Nine Mile  | 16   | 13.5   | 0  | -20  | 0                   | 9.5          | 104                         | 18                                 | 3   | yes     |
| 154                 | 19                   | 26                        | p   | south   | Ten Mile      | Orchard Hills North |  | 0  | 0  | 0  | 0  | -4                  | -4           | 100                         | 19                                 |   |         |
| 16                  | 20                   | 11                        | p   | south   | Thirteen Mile | Novi Rd.            | Holmes   | 16   | 0  | 0  | -20  | 0                   | -4           | 97.5                        | 20                                 | none                                      | yes     |
| 73                  | 21                   | 24                        | s   | east  | Meadowbrook   | Eleven Mile         | Grand River  |  |  |  |  |                     | 0            | 84.5                        | 21                                 | 14  | partial |
| 4                   | 22                   | 2                         | s   | south   | Fourteen Mile | Novi Rd.            | Beechwalk Apartments   |  |  |  |  |                     | 0            | 83                          | 22                                 | none                                      | no      |
| 70                  | 23                   | 23                        | p   | west  | Meadowbrook   | Eleven Mile         | Gateway Village  |  |  |  |  |                     | 0            | 81                          | 23                                 | 14  | most    |



**Proposed Pathway and Sidewalk Segments  
in right-of-way 2011 Update  
(data through 11/1/11)**

pathways outside of road right of ways not included

**Pathway/Sidewalk Analysis/Prioritization Worksheet**

printed 11/03/2011

| Segment Item Number | OVERALL SEGMENT RANK | Located in Section Number | Side of Street Location   | Street that segment is adjacent to  | From                  | To               | TIER 2 CATEGORIES Criteria Points<br>(only top 20 Tier 1 segments receive tier 2 points) |  |  |  |  | TOTALS              |              | OTHER INFO                  |                                    |   |
|---------------------|----------------------|---------------------------|---|---|-----------------------|------------------|--|--|--|--|--|---------------------|--------------|-----------------------------|------------------------------------|---|
|                     |                      |                           |   |   |                       |                  | EASE OF CONSTRUCTION (easy/hard)   | RIGHT-OF-WAY AVAILABILITY (based on % available) | OTHER FUNDING SOURCES (based on % available) | OPOSITE SIDE Sidewalk or Pathway - Road less than 12,000 ADT and 35 mph or less existing or planned with higher priority ranking | PRIVATE DEVELOPMENT POTENTIAL <Negative Points>  | TOTAL TIER 2 POINTS | TOTAL POINTS | TOTAL POINTS (OVERALL) RANK | Greenway/Pathway Study Survey Rank | Opposite side of road pathway or sidewalk |
|                     |                      |                           | s = 6 ft. sidewalk - p = 8 ft. pathway c = crossing rt=recreation trail |   |                       |                  | 0 = hard   | 0 = 0%   | 0 = 0%                                       | -20 = complete Section link<br>-10 = one direction Section link  | 0 = little development potential<br>-2 = partial segment development potential within 10 years<br>-4 = development potential within 10 years<br>-8 = site plan submitted |                     |              |                             |                                    |   |
|                     |                      |                           |   | equals segments with pathways or sidewalks on most of the opposite side of the street - note that these segments may be critical for system connectivity and must be analysed separately for connectivity     |                       |                  | 8 = medium hard  | 4.5 = 25%  | 4.5 = 25%                                    |  | -16 = development under construction   |                     |              |                             |                                    |   |
|                     |                      |                           |   | equals segments with a higher ranking segment planned for the opposite side of the street - note that these segments may be critical for system connectivity and must be analysed separately for connectivity |                       |                  | 16 = easy  | 9 = 50%  | 9 = 50%                                      |  |  |                     |              |                             |                                    |   |
| 39                  | 24                   | 17                        | p west  | Beck  | Eleven Mile           | Providence       |  |  |  |  |  | 0                   | 79           | 24                          | 31                                 | partial                                   |
| 22                  | 25                   | 13                        | s east  | Meadowbrook   | Twelve Mile           | I-96             |  |  |  |  |  | 0                   | 77           | 25                          | 14                                 | yes                                       |
| 129                 | 25                   | 1                         | s south   | Fourteen Mile   | Haverhill Farms       | Maples of Novi   |  |  |  |  |  | 0                   | 77           | 25                          | 31                                 | yes                                       |
| 5                   | 27                   | 2                         | s south   | Fourteen Mile   | Beechwalk Apartments  | East Lake        |  |  |  |  |  | 0                   | 76.5         | 27                          | none                               | yes                                       |
| 116                 | 27                   | 34                        | p south   | Nine Mile   | Chelsea               | Taft             |  |  |  |  |  | 0                   | 76.5         | 27                          | 5                                  | half                                      |
| 64                  | 29                   | 22                        | s east  | Taft  | Ten Mile              | Eleven Mile      |  |  |  |  |  | 0                   | 76           | 29                          | 14                                 | yes                                       |
| 30                  | 30                   | 14                        | p west  | Meadowbrook   | Twelve Mile           | Bridge           |  |  |  |  |  | 0                   | 72.5         | 30                          | 14                                 | no  |
| 21                  | 31                   | 13                        | p south   | Twelve Mile   | Meadowbrook           | Haggerty         |  |  |  |  |  | 0                   | 72           | 31                          | 31                                 | no  |
| 36                  | 32                   | 16                        | p west  | Taft  | Eleven Mile           | Andes            |  |  |  |  |  | 0                   | 71           | 32                          | 9                                  | no  |
| 58                  | 33                   | 21                        | s east  | Beck  | Sierra                | Ashley           |  |  |  |  |  | 0                   | 70.5         | 33                          | 31                                 | yes                                       |
| 60B                 | 33                   | 22                        | p south   | Eleven Mile   | Clark                 | Creek Crossing   |  |  |  |  |  | 0                   | 70.5         | 33                          | 31                                 | yes                                       |
| 88                  | 35                   | 26                        | s north   | Nine Mile   | RR crossing           | Novi Rd.         |  |  |  |  |  | 0                   | 69.5         | 35                          | 3                                  | yes                                       |
| 18                  | 36                   | 11                        | s north   | Twelve Mile   | Novi Rd.              | Meadowbrook      |  |  |  |  |  | 0                   | 69           | 36                          | 31                                 | most                                      |
| 23                  | 36                   | 13                        | p east  | Meadowbrook   | over I-96             | through MDOT ROW |  |  |  |  |  | 0                   | 69           | 36                          | 5                                  | 0   |
| 1b                  | 36                   | 1                         | s south   | Fourteen Mile   | M-5                   | Haverhill Farm   |  |  |  |  |  | 0                   | 69           | 36                          | none                               | no  |
| 44                  | 39                   | 18                        | p east  | Napier  | Knights Bridge        | Island Lake      |  |  |  |  |  | 0                   | 68.5         | 39                          | none                               | no  |
| 113                 | 39                   | 33                        | p south   | Nine Mile   | Beck                  | Taft             |  |  |  |  |  | 0                   | 68.5         | 39                          | 5                                  | no  |
| 6                   | 41                   | 3                         | p west  | West Park   | Bristol Corners       | Pontiac Trail    |  |  |  |  |  | 0                   | 68           | 41                          | none                               | yes                                       |
| 37                  | 42                   | 16                        | s north   | Eleven Mile   | Taft                  | Beck             |  |  |  |  |  | 0                   | 67.5         | 42                          | 9                                  | yes                                       |
| 25                  | 43                   | 13                        | s west  | Haggerty  | Twelve Mile           | section line     |  |  |  |  |  | 0                   | 67           | 43                          | none                               | most                                      |
| 87                  | 44                   | 26                        | s north   | Nine Mile   | Meadowbrook           | Venture          |  |  |  |  |  | 0                   | 66.5         | 44                          | 3                                  | no  |
| 127a                | 45                   | 27                        | s east  | Novi Way  | Ten Mile              | parking lot      |  |  |  |  |  | 0                   | 66           | 45                          | 31                                 | n/a                                       |
| 127b                | 45                   | 27                        | s east  | Novi Way  | parking lot           | Power Park       |  |  |  |  |  | 0                   | 66           | 45                          | 31                                 | n/a                                       |
| 16b                 | 45                   | 11                        | p south   | Thirteen Mile   | Sunshine              | Holmes           |  |  |  |  |  | 0                   | 66           | 45                          | none                               | yes                                       |
| 53                  | 48                   | 20                        | p west  | Beck  | Eleven Mile           | Kirkway Place    |  |  |  |  |  | 0                   | 64.5         | 48                          | 9                                  | partial                                   |
| 3                   | 49                   | 1                         | s north   | Thirteen Mile   | Haggerty Rd.          | M-5              |  |  |  |  |  | 0                   | 64           | 49                          | 31                                 | no  |
| 66                  | 49                   | 23                        | p south   | Grand River   | Novi Rd.              | Market           |  |  |  |  |  | 0                   | 64           | 49                          | 31                                 | no  |
| 68                  | 51                   | 23                        | p south   | Grand River   | Funeral Home          | Meadowbrook      |  |  |  |  |  | 0                   | 63.5         | 51                          | none                               | yes                                       |
| 24                  | 52                   | 13                        | s east  | Meadowbrook   | I-96                  | Eleven Mile      |  |  |  |  |  | 0                   | 62           | 52                          | 14                                 | no  |
| 115                 | 52                   | 34                        | s west  | Novi Rd.  | Timber Ridge developm | City Limits      |  |  |  |  |  | 0                   | 62           | 52                          | 31                                 | no  |



**Proposed Pathway and Sidewalk Segments  
in right-of-way 2011 Update  
(data through 11/1/11)**

pathways outside of road right of ways not included

**Pathway/Sidewalk Analysis/Prioritization Worksheet**

printed 11/03/2011

| Segment Item Number | OVERALL SEGMENT RANK | Located in Section Number | Side of Street Location | Street that segment is adjacent to | From        | To                  | TIER 2 CATEGORIES Criteria Points<br>(only top 20 Tier 1 segments receive tier 2 points) |  |  |  |  | TOTALS              |              |                             | OTHER INFO                         |   |
|---------------------|----------------------|---------------------------|-------------------------|------------------------------------|-------------|---------------------|--|--|--|--|--|---------------------|--------------|-----------------------------|------------------------------------|---|
|                     |                      |                           |                         |                                    |             |                     | EASE OF CONSTRUCTION (easy/hard)   | RIGHT-OF-WAY AVAILABILITY (based on % available) | OTHER FUNDING SOURCES (based on % available) | OPOSITE SIDE Sidewalk or Pathway - Road less than 12,000 ADT and 35 mph or less existing or planned with higher priority ranking | PRIVATE DEVELOPMENT POTENTIAL <Negative Points>  | TOTAL TIER 2 POINTS | TOTAL POINTS | TOTAL POINTS (OVERALL) RANK | Greenway/Pathway Study Survey Rank | Opposite side of road pathway or sidewalk |
|                     |                      |                           |                         |                                    |             |                     | 0 = hard   | 0 = 0%   | 0 = 0%                                       | -20 = complete Section link<br>-10 = one direction Section link  | 0 = little development potential<br>-2 = partial segment development potential within 10 years<br>-4 = development potential within 10 years<br>-8 = site plan submitted |                     |              |                             |                                    |   |
|                     |                      |                           |                         |                                    |             |                     | 8 = medium hard  | 4.5 = 25%  | 4.5 = 25%                                    |  |  |                     |              |                             |                                    |   |
|                     |                      |                           |                         |                                    |             |                     | 16 = easy  | 9 = 50%  | 9 = 50%                                      |  | -16 = development under construction   |                     |              |                             |                                    |   |
|                     |                      |                           |                         |                                    |             |                     |  | 18 = 100%  | 18 = 80%+                                    |  |  |                     |              |                             |                                    |   |
| 82B                 | 52                   | 25                        | s                       | west                               | Haggerty    | Pavillion Ct Apart. | Nine Mile  |  |  |  |  | 0                   | 62           | 52                          | none                               | partial                                   |
| 48                  | 55                   | 19                        | p                       | west                               | Wixom       | Ten Mile            | Island Lake  |  |  |  |  | 0                   | 60.5         | 55                          | none                               | no  |
| 79                  | 55                   | 24                        | s                       | east                               | Meadowbrook | Ten Mile            | Grand River  |  |  |  |  | 0                   | 60.5         | 55                          | 14                                 | no  |
| 77                  | 57                   | 24                        | s                       | west                               | Haggerty    | Grand River         | section line   |  |  |  |  | 0                   | 60           | 57                          | none                               | no  |
| 120                 | 57                   | 36                        | s                       | west                               | Haggerty    | Eight Mile          | Nine Mile  |  |  |  |  | 0                   | 60           | 57                          | none                               | no  |
| 31                  | 59                   | 15                        | s                       | south                              | Twelve Mile | Novi Rd.            | Taft   |  |  |  |  | 0                   | 59           | 59                          | 14                                 | partial                                   |
| 38                  | 59                   | 16                        | s                       | east                               | Beck        | Eleven Mile         | Grand River  |  |  |  |  | 0                   | 59           | 59                          | 31                                 | no  |
| 168                 | 59                   | 14                        | p                       | east                               | Novi        | across 96           |  |  |  |  |  | 0                   | 59           | 59                          |                                    |   |
| 7                   | 62                   | 3                         | s                       | south                              | South Lake  | Elm                 | Henning  |  |  |  |  | 0                   | 58.5         | 62                          | 31                                 | no  |
| 52                  | 62                   | 20                        | p                       | south                              | Eleven Mile | Wixom               | Beck   |  |  |  |  | 0                   | 58.5         | 62                          | 9                                  | yes                                       |
| 97                  | 62                   | 29                        | p                       | west                               | Beck        | Ten Mile            | Nine Mile  |  |  |  |  | 0                   | 58.5         | 62                          | 31                                 | no  |
| 29                  | 65                   | 14                        | p                       | south                              | Twelve Mile | west of Meadowbrook | Meadowbrook  |  |  |  |  | 0                   | 57.5         | 65                          | 31                                 | no  |
| 169                 | 65                   | 17                        | p                       | west                               | Beck        | across 96           |  |  |  |  |  | 0                   | 57.5         | 65                          |                                    |   |
| 72                  | 67                   | 23                        | p                       | north                              | Grand River | Town Center         | Amstaff building   |  |  |  |  | 0                   | 57           | 67                          | none                               | no  |
| 43                  | 68                   | 18                        | p                       | west                               | Wixom       | Twelve Mile         | Island Lake  |  |  |  |  | 0                   | 56.5         | 68                          | none                               | no  |
| 19                  | 69                   | 12                        | s                       | north                              | Twelve Mile | Meadowbrook         | Cabot  |  |  |  |  | 0                   | 56           | 69                          | 31                                 | yes                                       |
| 12                  | 70                   | 9                         | s                       | north                              | Twelve Mile | West Park           | Liberty Park   |  |  |  |  | 0                   | 55           | 70                          | 14                                 | yes                                       |
| 35                  | 71                   | 15                        | s                       | east                               | Taft        | Eleven Mile         | Grand River  |  |  |  |  | 0                   | 54.5         | 71                          | 9                                  | yes                                       |
| 75                  | 71                   | 24                        | p                       | north                              | Grand River | Seeley              | Meadowbrook  |  |  |  |  | 0                   | 54.5         | 71                          | none                               | no  |
| 32                  | 73                   | 15                        | s                       | west                               | Novi Rd.    | Twelve Mile         | I-96 south side  |  |  |  |  | 0                   | 53.5         | 73                          | 14                                 | no  |
| 14                  | 74                   | 10                        | s                       | north                              | Twelve Mile | Carlton Forest      | BP   |  |  |  |  | 0                   | 52.5         | 74                          | 14                                 | yes                                       |
| 51                  | 74                   | 20                        | s                       | north                              | Ten Mile    | Wixom               | Woodham  |  |  |  |  | 0                   | 52.5         | 74                          | 14                                 | no  |
| 114                 | 76                   | 34                        | s                       | east                               | Taft        | Nine Mile           | City Limits  |  |  |  |  | 0                   | 52           | 76                          | none                               | no  |
| 8                   | 77                   | 4                         | p                       | west                               | West Park   | Bristol Corners     | West   |  |  |  |  | 0                   | 51.5         | 77                          | none                               | no  |
| 78                  | 78                   | 24                        | p                       | south                              | Grand River | Meadowbrook         | Haggerty   |  |  |  |  | 0                   | 51           | 78                          | none                               | partial                                   |
| 67                  | 79                   | 23                        | p                       | south                              | Grand River | Fountain Park       | Funeral Home   |  |  |  |  | 0                   | 50           | 79                          | none                               | no  |
| 10                  | 80                   | 4                         | s                       | east                               | Beck        | K & S Plaza         | K & S Plaza  |  |  |  |  | 0                   | 49           | 80                          | none                               | no  |
| 34                  | 80                   | 15                        | s                       | north                              | Eleven Mile | Clark               | Taft   |  |  |  |  | 0                   | 49           | 80                          | 31                                 | no  |



**Proposed Pathway and Sidewalk Segments  
in right-of-way 2011 Update  
(data through 11/1/11)**

pathways outside of road right of ways not included

**Pathway/Sidewalk Analysis/Prioritization Worksheet**

printed 11/03/2011

| Segment Item Number | OVERALL SEGMENT RANK | Located in Section Number | Side of Street Location   | Street that segment is adjacent to  | From                   | To                      | TIER 2 CATEGORIES Criteria Points<br>(only top 20 Tier 1 segments receive tier 2 points) |  |  |   |   | TOTALS              |              | OTHER INFO                  |                                    |   |  |  |  |  |
|---------------------|----------------------|---------------------------|---|---|------------------------|-------------------------|--|--|--|---|---|---------------------|--------------|-----------------------------|------------------------------------|---|--|--|--|--|
|                     |                      |                           |   |   |                        |                         | EASE OF CONSTRUCTION (easy/hard)   | RIGHT-OF-WAY AVAILABILITY (based on % available) | OTHER FUNDING SOURCES (based on % available) | OPOSITE SIDE Sidewalk or Pathway - Road less than 12,000 ADT and 35 mph or less existing or planned with higher priority ranking  | PRIVATE DEVELOPMENT POTENTIAL <Negative Points> | TOTAL TIER 2 POINTS | TOTAL POINTS | TOTAL POINTS (OVERALL) RANK | Greenway/Pathway Study Survey Rank | Opposite side of road pathway or sidewalk |  |  |  |  |
|                     |                      |                           | s = 6 ft. sidewalk - p = 8 ft. pathway c = crossing rt=recreation trail |   |                        |                         | 0 = hard   | 0 = 0%   | 0 = 0%                                       | -20 = complete Section link<br>-10 = one direction Section link<br><br>-4 = development potential within 10 years<br>-8 = site plan submitted<br><br>-16 = development under construction |   |                     |              |                             |                                    |   |  |  |  |  |
|                     |                      |                           |   | equals segments with pathways or sidewalks on most of the opposite side of the street - note that these segments may be critical for system connectivity and must be analysed separately for connectivity     | 8 = medium hard        | 4.5 = 25%               | 4.5 = 25%  |  |  |   |   |                     |              |                             |                                    |   |  |  |  |  |
|                     |                      |                           |   | equals segments with a higher ranking segment planned for the opposite side of the street - note that these segments may be critical for system connectivity and must be analysed separately for connectivity | 16 = easy              | 9 = 50%                 | 9 = 50%  |  |  |   |   |                     |              |                             |                                    |   |  |  |  |  |
| 163                 | 80                   | 3p                        | north   | South Lake  | Lakeshore Park         | Landings Park           |  |  |  |   | 0   | 49                  | 80           |                             |                                    |   |  |  |  |  |
| 28                  | 83                   | 14p                       | east  | Novi Rd.  | south Twelve Oaks entr | North Twelve Oaks entra |  |  |  |   | 0   | 47.5                | 83           | 14                          | no                                 |   |  |  |  |  |
| 11                  | 84                   | 9s                        | north   | Twelve Mile   | Novi Concrete          | West Park               |  |  |  |   | 0   | 46.5                | 84           | 14                          | no                                 |   |  |  |  |  |
| 69                  | 85                   | 23s                       | south   | Eleven Mile   | Town Center            | Meadowbrook             |  |  |  |   | 0   | 46                  | 85           | none                        | no                                 |   |  |  |  |  |
| 112                 | 85                   | 33s                       | east  | Beck  | Nine Mile              | City Limits             |  |  |  |   | 0   | 46                  | 85           | none                        | no                                 |   |  |  |  |  |
| 17                  | 87                   | 11s                       | east  | Old Novi  | Novi Rd.               | Thirteen Mile           |  |  |  |   | 0   | 44.5                | 87           | 31                          | n/a                                |   |  |  |  |  |
| 153                 | 88                   | 36s                       | east  | Haggerty  | limits                 | south                   |  |  |  |   | 0   | 43.5                | 88           |                             |                                    |   |  |  |  |  |
| 33                  | 89                   | 15s                       | west  | Novi Rd.  | I-96                   | Crecent                 |  |  |  |   | 0   | 43                  | 89           | 14                          | no                                 |   |  |  |  |  |
| 162                 | 90                   | 3s                        | north   | South Lake  | Lakeshore Park         | West Park               |  |  |  |   | 0   | 42                  | 90           |                             |                                    |   |  |  |  |  |
| 164                 | 90                   | 3p                        | south   | South Lake  | Lakeshore Park         | Elm                     |  |  |  |   | 0   | 42                  | 90           |                             |                                    |   |  |  |  |  |
| 165                 | 90                   | 3p                        | south   | South Lake  | Henning                | Lakeshore Park          |  |  |  |   | 0   | 42                  | 90           |                             |                                    |   |  |  |  |  |
| 1a                  | 90                   | 1s                        | south   | Fourteen Mile   | Haggerty Rd.           | M-5                     |  |  |  |   | 0   | 42                  | 90           | none                        | no                                 |   |  |  |  |  |
| 40                  | 94                   | 17p                       | south   | Grand River   | Providence Hospital    | Wixom                   |  |  |  |   | 0   | 40                  | 94           | none                        | most                               |   |  |  |  |  |
| 76                  | 94                   | 24p                       | north   | Grand River   | Seeley                 | Haggerty                |  |  |  |   | 0   | 40                  | 94           | none                        | no                                 |   |  |  |  |  |
| 149                 | 94                   | 15p                       | east  | Clark   | Eleven Mile            | Grand River             |  |  |  |   | 0   | 40                  | 94           | 31                          | 0                                  |   |  |  |  |  |
| 74                  | 97                   | 24s                       | east  | Seeley  | Eleven Mile            | Grand River             |  |  |  |   | 0   | 39.5                | 97           | none                        | n/a                                |   |  |  |  |  |
| 41                  | 98                   | 17s                       | east  | Wixom   | Target                 | Deerfield Elementary    |  |  |  |   | 0   | 38.5                | 98           | none                        | 0                                  |   |  |  |  |  |
| 111                 | 99                   | 32p                       | south   | Nine Mile   | Garfield               | Beck                    |  |  |  |   | 0   | 35.5                | 99           | 14                          | no                                 |   |  |  |  |  |
| 98                  | 100                  | 29s                       | north   | Nine Mile   | Beck                   | Garfield                |  |  |  |   | 0   | 35                  | 100          | 14                          | no                                 |   |  |  |  |  |
| 47                  | 101                  | 19s                       | north   | Ten Mile  | Napier                 | Island Lake             |  |  |  |   | 0   | 34                  | 101          | none                        | no                                 |   |  |  |  |  |
| 110                 | 101                  | 32p                       | west  | Beck  | Eight Mile             | Nine Mile               |  |  |  |   | 0   | 34                  | 101          | none                        | 0                                  |   |  |  |  |  |
| 50                  | 103                  | 20s                       | east  | Wixom   | Ten Mile               | Island Lake             |  |  |  |   | 0   | 33.5                | 103          | none                        | no                                 |   |  |  |  |  |
| 2                   | 104                  | 1s                        | west  | Haggerty  | Fourteen Mile          | Thirteen Mile           |  |  |  |   | 0   | 32.5                | 104          | none                        | yes                                |   |  |  |  |  |
| 49                  | 104                  | 19s                       | north   | Ten Mile  | Wixom                  | Island Lake             |  |  |  |   | 0   | 32.5                | 104          | 31                          | no                                 |   |  |  |  |  |
| 26                  | 106                  | 13s                       | north   | Eleven Mile   | Meadowbrook            | Seeley                  |  |  |  |   | 0   | 31                  | 106          | none                        | no                                 |   |  |  |  |  |
| 161                 | 107                  | 16p                       | east  | Beck  | across 96              |                         |  |  |  |   | 0   | 30                  | 107          |                             |                                    |   |  |  |  |  |
| 45                  | 108                  | 18s                       | south   | Twelve Mile   | Knights Bridge Gate    | City Limits             |  |  |  |   | 0   | 29                  | 108          | none                        | most                               |   |  |  |  |  |
| 46                  | 109                  | 19p                       | east  | Napier  | Island Lake            | Ten Mile                |  |  |  |   | 0   | 28.5                | 109          | none                        | no                                 |   |  |  |  |  |
| 109                 | 110                  | 32p                       | north   | Eight Mile  | Garfield               | Beck                    |  |  |  |   | 0   | 27.5                | 110          | none                        | no                                 |   |  |  |  |  |
| 155                 | 111                  | 30p                       | south   | Ten Mile  | Links of Novi          |                         |  |  |  |   | 0   | 25                  | 111          |                             |                                    |   |  |  |  |  |



**Proposed Pathway and Sidewalk Segments  
in right-of-way 2011 Update  
(data through 11/1/11)**

pathways outside of road right of ways not included

**Pathway/Sidewalk Analysis/Prioritization Worksheet**

printed 11/03/2011

| Segment Item Number | OVERALL SEGMENT RANK | Located in Section Number | Side of Street Location   | Street that segment is adjacent to  | From        | To               | TIER 2 CATEGORIES Criteria Points<br>(only top 20 Tier 1 segments receive tier 2 points) |  |  |   |   | TOTALS              |              |                             | OTHER INFO                         |   |           |           |
|---------------------|----------------------|---------------------------|---|---|-------------|------------------|--|--|--|---|---|---------------------|--------------|-----------------------------|------------------------------------|---|-----------|-----------|
|                     |                      |                           |   |   |             |                  | EASE OF CONSTRUCTION (easy/hard)   | RIGHT-OF-WAY AVAILABILITY (based on % available) | OTHER FUNDING SOURCES (based on % available) | OPOSITE SIDE Sidewalk or Pathway - Road less than 12,000 ADT and 35 mph or less existing or planned with higher priority ranking  | PRIVATE DEVELOPMENT POTENTIAL <Negative Points> | TOTAL TIER 2 POINTS | TOTAL POINTS | TOTAL POINTS (OVERALL) RANK | Greenway/Pathway Study Survey Rank | Opposite side of road pathway or sidewalk |           |           |
|                     |                      |                           | s = 6 ft. sidewalk - p = 8 ft. pathway c = crossing rt=recreation trail |   |             |                  | 0 = hard   | 0 = 0%   | 0 = 0%                                       | -20 = complete Section link<br>-10 = one direction Section link<br><br>-4 = development potential within 10 years<br>-8 = site plan submitted<br><br>-16 = development under construction |   |                     |              |                             |                                    |   |           |           |
|                     |                      |                           |   | 8 = medium hard   | 4.5 = 25%   | 4.5 = 25%        |  |  |  |   |   |                     |              |                             |                                    |   |           |           |
|                     |                      |                           |   | 16 = easy   | 9 = 50%     | 9 = 50%          |  |  |  |   |   |                     |              |                             |                                    |   | 18 = 100% | 18 = 80%+ |
|                     |                      |                           |   | equals segments with pathways or sidewalks on most of the opposite side of the street - note that these segments may be critical for system connectivity and must be analysed separately for connectivity     |             |                  |  |  |  |   |   |                     |              |                             |                                    |   |           |           |
|                     |                      |                           |   | equals segments with a higher ranking segment planned for the opposite side of the street - note that these segments may be critical for system connectivity and must be analysed separately for connectivity |             |                  |  |  |  |   |   |                     |              |                             |                                    |   |           |           |
| 20                  | 112                  | 12                        | s   | west  | Haggerty    | Thirteen Mile    | Twelve Mile  |  |  |   |   | 0                   | 24.5         | 112                         | none                               | yes                                       |           |           |
| 105                 | 113                  | 31                        | p   | north   | Eight Mile  | Napier           | Garfield   |  |  |   |   | 0                   | 22.5         | 113                         | none                               | no  |           |           |
| 156                 | 114                  | 30                        | p   | south   | Ten Mile    | Links of Novi    |  |  |  |   |   | 0                   | 21           | 114                         |                                    |   |           |           |
| 157                 | 114                  | 30                        | p   | south   | Ten Mile    | Links of Novi    |  |  |  |   |   | 0                   | 21           | 114                         |                                    |   |           |           |
| 159                 | 114                  | 19                        | s   | north   | Ten Mile    | Oak Point Church | Oak Point Church   |  |  |   |   | 0                   | 21           | 114                         |                                    |   |           |           |
| 160                 | 114                  | 19                        | s   | north   | Ten Mile    | Island Lake      | Oak Point Church   |  |  |   |   | 0                   | 21           | 114                         |                                    |   |           |           |
| 167                 | 118                  | 9                         | p   | south   | West        | West Park        | City Limits  |  |  |   |   | 0                   | 20           | 118                         |                                    |   |           |           |
| 27                  | 119                  | 14                        | p   | north   | Eleven Mile | Pinnacle         | Town Center  |  |  |   |   | 0                   | 18.5         | 119                         | none                               | n/a                                       |           |           |
| 100                 | 119                  | 30                        | p   | south   | Ten Mile    | Wixom            | Napier   |  |  |   |   | 0                   | 18.5         | 119                         | 31                                 | no  |           |           |
| 103                 | 121                  | 31                        | p   | east  | Napier      | Park Place       | Community Sports Park  |  |  |   |   | 0                   | 16           | 121                         | 31                                 | no  |           |           |
| 104                 | 121                  | 31                        | p   | east  | Napier      | Eight Mile       | Community Sports Park  |  |  |   |   | 0                   | 16           | 121                         | 31                                 | no  |           |           |
| 158                 | 121                  | 30                        | p   | east  | Napier      | Links of Novi    |  |  |  |   |   | 0                   | 16           | 121                         |                                    |   |           |           |
| 106                 | 124                  | 31                        | p   | west  | Garfield    | Eight Mile       | Nine Mile  |  |  |   |   | 0                   | 13.5         | 124                         | none                               | no  |           |           |
| 108                 | 124                  | 32                        | s   | east  | Garfield    | Eight Mile       | Nine Mile  |  |  |   |   | 0                   | 13.5         | 124                         | none                               | most                                      |           |           |
| 166                 | 126                  | 4                         | p   | north   | West        | Hudson           | City Limits  |  |  |   |   | 0                   | 13           | 126                         |                                    |   |           |           |
| 170                 | 126                  | 4                         | s   | north   | West        | West Park        | Hudson   |  |  |   |   | 0                   | 13           | 126                         |                                    |   |           |           |
| 101                 | 128                  | 30                        | p   | east  | Napier      | Ten Mile         | Nine Mile  |  |  |   |   | 0                   | 12.5         | 128                         | none                               | no  |           |           |
| 102                 | 129                  | 30                        | s   | north   | Nine Mile   | Napier           | Garfield   |  |  |   |   | 0                   | 8.5          | 129                         | none                               | no  |           |           |
| 107                 | 129                  | 31                        | p   | south   | Nine Mile   | Garfield         | Hillside   |  |  |   |   | 0                   | 8.5          | 129                         | 31                                 | no  |           |           |
| 147                 | 129                  | 31                        | s   | south   | Nine Mile   | Hillside         | Napier   |  |  |   |   | 0                   | 8.5          | 129                         | none                               |   |           |           |
| Total               |                      |                           |   |   |             |                  |  |  |  |   |   |                     |              |                             |                                    |   |           |           |



## Top 20 Ranked Proposed Segments

### 2011 Update (data updated through 11/1/11) Pathway/Sidewalk Analysis/Prioritization Worksheet

printed 11/03/2011

| Segment Item Number | OVERALL SEGMENT RANK | Located in Section Number |   | Side of Street Location | Street that segment is adjacent to  | From                | To                  | Number of pieces in segment | Segment Length (feet) excluding completed pieces and developer planned pieces | notes              |
|---------------------|----------------------|---------------------------|---|-------------------------|---|---------------------|---------------------|-----------------------------|---|--------------------|
|                     |                      |                           |   |                         |   |                     |                     |                             |   |                    |
|                     |                      |                           |   |                         | equals segments with pathways or sidewalks on most of the opposite side of the street - note that these segments may be critical for system connectivity and must be analysed separately for connectivity     |                     |                     |                             |   |                    |
|                     |                      |                           |   |                         | equals segments with a higher ranking segment planned for the opposite side of the street - note that these segments may be critical for system connectivity and must be analysed separately for connectivity |                     |                     |                             |   |                    |
| 65                  | 1                    | 23                        | p | east                    | <b>Novi Rd.</b>   | Grand River         | Ten Mile            | 1                           | 3,500   | Under Construction |
| 92                  | 2                    | 27                        | s | west                    | <b>Novi Rd.</b>   | Ten Mile            | Nine Mile           | 2                           | 2,135   | 12-13 CIP          |
| 61                  | 3                    | 22                        | s | west                    | <b>Novi Rd.</b>   | Cemetery            | Pine Ridge Center   | 1                           | 3,600   | Under Construction |
| 81                  | 4                    | 25                        | p | south                   | <b>Ten Mile</b>   | Meadowbrook         | Haggerty            | 1                           | 5,300   |                    |
| 145                 | 5                    | 23                        | s | north                   | <b>Ten Mile</b>   | Catherine Ind. Park | Brookhaven          | 1                           | 1,143   | Sched. 2011/2012   |
| 90                  | 6                    | 26                        | p | south                   | <b>Ten Mile</b>   | Novi Rd.            | Chipmunk            | 1                           | 2,400   | 15-16 CIP          |
| 9                   | 7                    | 4                         | s | south                   | <b>Pontiac Trail</b>  | West Park           | Beck                | 3                           | 5,000   |                    |
| 80B                 | 8                    | 24                        | s | north                   | <b>Ten Mile</b>   | Meadowbrook         | Willowbrook Estates | 1                           | 189   |                    |
| 89                  | 9                    | 26                        | p | east                    | <b>Novi Rd.</b>   | Ten Mile            | Ice Arena           | 1                           | 500   | 12-13 CIP          |
| 93                  | 10                   | 27                        | s | north                   | <b>Nine Mile</b>  | Novi Rd.            | Taft                | 3                           | 3,300   | 13-14 CIP          |
| 119                 | 11                   | 36                        | s | east                    | <b>Meadowbrook</b>  | Eight Mile          | Nine Mile           | 2                           | 3,800   | 15-16 CIP          |
| 62                  | 12                   | 22                        | s | north                   | <b>Ten Mile</b>   | Eaton Center        | Churchill Crossing  | 1                           | 400   | 14-15 CIP          |
| 121                 | 12                   | 36                        | p | south                   | <b>Nine Mile</b>  | Meadowbrook         | Haggerty            | 1                           | 5,280   |                    |
| 54                  | 14                   | 20                        | s | north                   | <b>Ten Mile</b>   | Beck                | Greenwood Oaks      | 1                           | 935   | 16-17 CIP          |
| 55                  | 14                   | 20                        | p | west                    | <b>Beck</b>   | Ten Mile            | Greenwood Oaks      | 1                           | 470   | 16-17 CIP          |
| 99                  | 16                   | 29                        | p | south                   | <b>Ten Mile</b>   | Beck                | Wixom               | 2                           | 4,000   | 10-11 CIP          |
| 144                 | 17                   | 23                        | p | west                    | <b>Meadowbrook</b>  | Grand River         | Cherry Hill         | 1                           | 700   |                    |
| 84                  | 18                   | 25                        | s | east                    | <b>Meadowbrook</b>  | Ten Mile            | Nine Mile           | 2                           | 4,400   | 16-17 CIP          |
| 154                 | 19                   | 26                        | p | south                   | <b>Ten Mile</b>   | Orchard Hills North |                     | 1                           | 914   |                    |
| 16                  | 20                   | 11                        | p | south                   | <b>Thirteen Mile</b>  | Novi Rd.            | Holmes              | 1                           | 275   |                    |

total 48,241



# Proposed Off-Road Recreational Pathways & On-Road Regional Pathways

from 2011 Non-Motorized Master Plan

2011 Update (data through 11/1/11)

## Pathway/Sidewalk Analysis/Prioritization Worksheet

printed 11/03/2011

| Segment Item Number | Located in Section Number | No/Mo Phase - 0=former Top 20 1=Initial 2=Major Corridor 3=Neighborhood Connectors | Type | Location | From / To | LENGTH | WIDTH | SURFACE | CLASSIFICATION | NOTES |
|---------------------|---------------------------|--|------|----------|-----------|--------|-------|---------|----------------|-------|
|---------------------|---------------------------|--|------|----------|-----------|--------|-------|---------|----------------|-------|

### Off-Road Trails and Paths

|      |        |   |                    |                                 |                                |           |       |          |          |                   |
|------|--------|---|--------------------|---------------------------------|--------------------------------|-----------|-------|----------|----------|-------------------|
| 4295 | 27     | 0 | Planned Paved      | Civic Center                    | Novi Way to play ground        | 676.0     | 5     | concrete | park     |                   |
| 4296 | 27     | 0 | Planned Paved      | Civic Center                    | Novi to Novi Way               | 419.6     | 5     | concrete | park     |                   |
| 4036 | 2      | 1 | Planned Paved      | Hickory Woods                   | Novi to East Lake              | 1,025.4   | 10    | asphalt  | local    | CIP 11-12         |
| 4338 | 17     | 1 | Planned Regional   | Medilodge                       | ITC to Providence              | 859.0     | 10    | asphalt  | regional | Medilodge project |
| 4339 | 17     | 1 | Planned Regional   | ITC Medilodge                   | 11 Mile to Medilodge           | 894.0     | 10    | asphalt  | regional | Medilodge project |
| 4077 | 23     | 1 | Planned Paved      | Main St path                    | Capitol to Cherry Hill         | 779.3     | 10    | asphalt  | park     | CIP 12-13         |
| 4019 | 25     | 1 | Planned Paved      | Brookfarm Park                  | Ripple Creel to school         | 632.8     | 10    | asphalt  | local    | CIP 14-15         |
| 4030 | 26     | 1 | Planned Paved      | Orchard Hills West              | Mallot to Chattman             | 859.9     | 10    | asphalt  | local    |                   |
| 4010 | 3      | 2 | Planned Regional   | Lakeshore Park                  | Parking lot to 12 1/2          | 3,513.2   | 10    | asphalt  | local    |                   |
| 4011 | 3      | 2 | Planned Regional   | Lakeshore Park                  | West Park to parking lot       | 5,758.6   | 10    | asphalt  | regional |                   |
| 4066 | 3      | 2 | Planned Regional   | Lakeshore Park                  | parking to South Lake          | 1,388.4   | 10    | asphalt  | regional |                   |
| 4067 | 3      | 2 | Planned Regional   | Lakeshore Park                  | trail head to parking          | 291.2     | 10    | asphalt  | regional |                   |
| 4049 | 4      | 2 | Planned Regional   | Beck North                      | Spring Lake to West Park       | 4,208.5   | 10    | asphalt  | regional |                   |
| 4050 | 4      | 2 | Planned Regional   | The Springs Apartments          | Fireside to Beck North         | 1,255.9   | 10    | asphalt  | regional |                   |
| 4012 | 15     | 2 | Planned Paved      | I-96                            | RR to Meadowbrook              | 9,677.4   | 10    | asphalt  | local    |                   |
| 4013 | 17     | 2 | Planned Regional   | Medilodge Providence            | Medilodge to Beck              | 3,203.1   | 10    | asphalt  | regional | CIP 11-12         |
| 4028 | 17     | 2 | Planned Paved      | Beck to ITC                     | ITC to Cheltenham              | 1,877.9   | 10    | asphalt  | local    |                   |
| 4062 | 17     | 2 | Planned Regional   | ITC Corridor                    | Medilodge                      | 1,511.2   | 10    | asphalt  | regional |                   |
| 4020 | 25     | 2 | Planned Paved      | Village Wood Lake               | Meadowbrook to Village Wood    | 1,146.9   | 10    | asphalt  | local    |                   |
| 4037 | 26     | 2 | Planned Paved      | Orchard Hills West              | Meadowbrook to Balcombe        | 1,804.2   | 10    | asphalt  | local    |                   |
| 4039 | 26     | 2 | Planned Paved      | Novi Ridge Orchard Hills        | Balcombe to RR                 | 1,068.0   | 10    | asphalt  | local    |                   |
| 4040 | 26     | 2 | Planned Paved      | Ice Arena                       | RR to River Oaks               | 1,539.7   | 10    | asphalt  | local    |                   |
| 4022 | 27     | 2 | Planned Paved      | Power Park                      | Taft to existing path          | 1,772.3   | 10    | asphalt  | park     |                   |
| 4023 | 27     | 2 | Planned Paved      | Power Park                      | Johnathan to park path         | 1,079.2   | 10    | asphalt  | park     |                   |
| 4002 | 30     | 2 | Planned Regional   | Undeveloped Park/ITC Corridor   | 9 to 10 Mile                   | 3,646.9   | 10    | asphalt  | regional | CIP 12-14         |
| 4003 | 31     | 2 | Planned Regional   | ITC Corridor                    | ITC Park to 9 Mile             | 8,153.1   | 10    | asphalt  | regional | CIP 11-12         |
| 4064 | 31     | 2 | Planned Regional   | ITC Sports Center Park          | ITC to 8 Mile                  | 3,258.9   | 10    | asphalt  | regional |                   |
| 4031 | 2      | 3 | Planned Paved      | Maples Chateau Estates          | Independence to La Roi         | 1,270.0   | 10    | asphalt  | local    |                   |
| 4116 | 4      | 3 | Planned Regional   | Portsmouth                      | Pontiac Trail to Spring Lake   | 1,198.4   | 8     | asphalt  | regional |                   |
| 4025 | 11     | 3 | Planned Paved      | Tollgate Farms                  | Steinbeck to 12 Mile           | 4,406.9   | 10    | asphalt  | local    |                   |
| 4051 | 11     | 3 | Planned Paved      | Tollgate Woods                  | Steinbeck to west              | 164.3     | 10    | asphalt  | local    |                   |
| 4052 | 11     | 3 | Planned Paved      | Tollgate Woods to Vista         | Steinbeck to Sandstone         | 645.8     | 10    | asphalt  | local    |                   |
| 4047 | 15     | 3 | Planned Paved      | CSX                             | under 96                       | 403.0     | 10    | asphalt  | local    |                   |
| 4048 | 15     | 3 | Planned Paved      | I-96                            | Taft to RR                     | 2,064.7   | 10    | asphalt  | local    |                   |
| 4063 | 16     | 3 | Planned Paved      | Taft Rd                         | GR to 96                       | 1,373.1   | 10    | asphalt  | local    |                   |
| 4005 | 17     | 3 | Planned Paved      | ITC Corridor                    | s. Providence to Mid Providenc | 1,999.2   | 10    | asphalt  | local    |                   |
| 4006 | 17     | 3 | Planned Paved      | ITC Corridor                    | Grand River to 12 Mile         | 772.8     | 10    | asphalt  | regional |                   |
| 4007 | 17     | 3 | Planned Paved      | Providence Park Hospital        | Central Providence to Grand R  | 1,366.1   | 10    | asphalt  | regional |                   |
| 4014 | 17     | 3 | Planned Paved      | Wildlife Woods Park             | ITC to Wixom                   | 3,393.1   | 10    | asphalt  | park     |                   |
| 4045 | 19     | 3 | Planned Paved      | Knightsbridge Old Dutch         | Victoria to Island Lake        | 2,832.3   | 10    | asphalt  | local    |                   |
| 4016 | 20     | 3 | Planned Paved      | Mockingbird                     | Sandpiper to ITC               | 557.3     | 10    | asphalt  | local    |                   |
| 4026 | 21     | 3 | Planned Paved      | Yorkshire to Taft Rd            | Emerald Forest to Taft         | 767.4     | 10    | asphalt  | local    |                   |
| 4053 | 21     | 3 | Planned Paved      | Walden Simmons Orchard          | Arcadia to Cidermill           | 1,137.2   | 10    | asphalt  | local    |                   |
| 4017 | 22     | 3 | Planned Paved      | East of Taft Rd.                | Kerri to Taft a                | 1,590.2   | 10    | asphalt  | local    |                   |
| 4018 | 22     | 3 | Planned Paved      | Cedar Springs                   | Kerri to Taft b                | 312.0     | 10    | asphalt  | local    |                   |
| 4046 | 22     | 3 | Planned Paved      | Churchill to Clark              | Clark to Thatcher              | 146.9     | 10    | asphalt  | local    |                   |
| 4054 | 22     | 3 | Planned Paved      | Legacy Park                     | 10 Mile to Laurel              | 2,766.3   | 10    | asphalt  | local    |                   |
| 4055 | 22     | 3 | Planned Paved      | Churchill to Novi Rd            | Thatcher to Novi               | 1,624.3   | 10    | asphalt  | local    |                   |
| 4042 | 25     | 3 | Planned Paved      | Willowbrook                     | Le Bost to Park                | 323.9     | 10    | asphalt  | local    |                   |
| 4021 | 26     | 3 | Planned Paved      | River Oaks                      | Portage Way east boundary      | 353.4     | 10    | asphalt  | local    |                   |
| 4035 | 26     | 3 | Planned Paved      | Whispering Meadows Orchard Hill | Sovoito to Orchard Hills       | 1,324.3   | 10    | asphalt  | local    |                   |
| 4041 | 26     | 3 | Planned Paved      | Orchard Hill                    | Tammera to Aspen               | 578.2     | 10    | asphalt  | local    |                   |
| 4024 | 27     | 3 | Planned Paved      | Dunbarton Pines                 | midway to Park                 | 2,001.9   | 10    | asphalt  | local    |                   |
| 4033 | 27     | 3 | Planned Paved      | Orchard Ridge Arrowon           | Greening to Algonquin          | 787.0     | 10    | asphalt  | local    |                   |
| 4038 | 27     | 3 | Planned Paved      | Arrowon Pines                   | Algonquin to Mystic Forest     | 134.7     | 10    | asphalt  | local    |                   |
| 4015 | 29     | 3 | Planned Paved      | Nottingham Woods                | Woodworth to ITC               | 1,776.8   | 10    | asphalt  | local    |                   |
| 4198 | 30     | 3 | Planned Paved      | Singh Trail                     | 10 to 9 mile                   | 10,105.7  | 10    | asphalt  | local    |                   |
| 4027 | 35     | 3 | Planned Paved      | Chase to Novi Rd.               | Novi to Asbury                 | 306.2     | 10    | asphalt  | local    |                   |
| 4044 | 36     | 3 | Planned Paved      | Haverhill Maples                | Collingdale to Kingsley        | 2,807.4   | 10    | asphalt  | local    |                   |
| 4004 | 20, 29 | 3 | Planned Foot Trail | ITC Corridor                    | 9 1/2 to 11 Mile               | 8,100.6   | 10    | dirt     | local    |                   |
|      |        |   |                    |                                 |                                | 121,691.9 | total |          |          |                   |





## Proposed Off-Road Recreational Pathways & On-Road Regional Pathways

from 2011 Non-Motorized Master Plan

**2011 Update (data through 11/1/11)**

### Pathway/Sidewalk Analysis/Prioritization Worksheet

printed 11/03/2011

| Segment Item Number | Located in Section Number | No/Mo Phase - 0=former Top 20 1=Initial 2=Major Corridor 3=Neighborhood Connectors | Type | Location | From / To | LENGTH | WIDTH | SURFACE | CLASSIFICATION | NOTES |
|---------------------|---------------------------|--|------|----------|-----------|--------|-------|---------|----------------|-------|
|                     |                           |  |      |          |           |        |       |         |                |       |

**Planned On-Road Regional Upgrade**

|                      |    |   |                                  |               |                           |        |    |         |          |       |
|----------------------|----|---|----------------------------------|---------------|---------------------------|--------|----|---------|----------|-------|
| 4342                 | 14 | 1 | Planned On-Road Regional Upgrade | Meadowbrook   | 12 Mile to Bridge         | 4742.1 | 10 | asphalt | regional | west  |
| 4340                 | 12 | 2 | Planned On-Road Regional Upgrade | Thirteen Mile | M-5 to Meadowbrook        | 2817.4 | 10 | asphalt | regional | south |
| 4345                 | 9  | 3 | Planned On-Road Regional Upgrade | West Park     | West to 12 Mile           | 4982   | 10 | asphalt | regional | west  |
| 4341                 | 11 | 3 | Planned On-Road Regional Upgrade | Meadowbrook   | 12 to 13 Mile             | 5116.8 | 10 | asphalt | regional | west  |
| 4343                 | 17 | 3 | Planned On-Road Regional Upgrade | Eleven mile   | IITC to Wixom             | 2549.6 | 10 | asphalt | regional | north |
| 4344                 | 19 | 3 | Planned On-Road Regional Upgrade | Wixom         | 10 to 11 Mile             | 5437.2 | 10 | asphalt | regional | west  |
| 4345                 | 17 | 3 | Planned On-Road Regional Upgrade | Beck          | Providence to Grand River |        | 10 | asphalt | regional | west  |
| <b>25645.1 total</b> |    |   |                                  |               |                           |        |    |         |          |       |

**Dirt trails to be paved**

|                    |    |   |                  |             |  |      |    |         |      |  |
|--------------------|----|---|------------------|-------------|--|------|----|---------|------|--|
| 4297               | 27 | 2 | Dirt to be paved | Power Park  |  | 1185 | 10 | asphalt | park |  |
| 4298               | 27 | 2 | Dirt to be paved | Power Park  |  | 853  | 10 | asphalt | park |  |
| 4299               | 35 | 3 | Dirt to be paved | Rotary Park |  | 3294 | 10 | asphalt | park |  |
| 4300               | 35 | 3 | Dirt to be paved | Chase Farms |  | 596  | 10 | asphalt | park |  |
| 4301               | 35 | 3 | Dirt to be paved | Rotary Park |  | 2577 | 10 | asphalt | park |  |
| 4302               | 35 | 3 | Dirt to be paved | Chase Farms |  | 2831 | 10 | asphalt | park |  |
| 4303               | 35 | 3 | Dirt to be paved | Rotary Park |  | 750  | 10 | asphalt | park |  |
| <b>12086 total</b> |    |   |                  |             |  |      |    |         |      |  |

**Completed**

|                    |      |   |          |               |               |       |    |         |          |         |
|--------------------|------|---|----------|---------------|---------------|-------|----|---------|----------|---------|
| 123a               | done | 1 | regional | M-5 Extension | 14 to 13 Mile | 5,280 | 10 | asphalt | regional | Done 10 |
| <b>5,280 total</b> |      |   |          |               |               |       |    |         |          |         |



**Proposed Short Sections (400 feet or less)**

2010 Update (data through 11/1/10)

**Pathway/Sidewalk Analysis/Prioritization Worksheet**

printed

11/03/2011

| Segment Item Number   | OVERALL SEGMENT RANK | Located in Section Number | s=sidewalk - p=pathway c=crossing rt=recreation/l trail | Side of Street Location | Street that segment is adjacent to | From                    | To                   | Number of pieces in segment | Segment Length (feet) excluding completed pieces and developer planned pieces | notes            |
|-----------------------|----------------------|---------------------------|---|-------------------------|------------------------------------|-------------------------|----------------------|-----------------------------|---|------------------|
| <b>Short Segments</b> |                      |                           |   |                         |                                    |                         |                      |                             |   |                  |
| 80B                   | 9                    | 24                        | s   | north                   | <b>Ten Mile</b>                    | Meadowbrook             | Willowbrook Estates  | 1                           | 189   |                  |
| 62                    | 13                   | 22                        | s   | north                   | <b>Ten Mile</b>                    | Eaton Center            | Churchill Crossing   | 1                           | 400   | 14-15 CIP        |
| 16                    | 20                   | 11                        | p   | south                   | <b>Thirteen Mile</b>               | Novi Rd.                | Holmes               | 1                           | 275   |                  |
| 4                     | 23                   | 2                         | s   | south                   | <b>Fourteen Mile</b>               | Novi Rd.                | Beechwalk Apartments | 1                           | 200   | with Maple Manor |
| 60B                   | 34                   | 22                        | p   | south                   | <b>Eleven Mile</b>                 | Clark                   | Creek Crossing       | 1                           | 225   |                  |
| 23                    | 37                   | 13                        | p   | east                    | <b>Meadowbrook</b>                 | over I-96               | through MDOT ROW     | 1                           | 400   |                  |
| 127a                  | 46                   | 27                        | s   | east                    | <b>Novi Way</b>                    | Ten Mile                | parking lot          | 1                           | 350   | 12-13 CIP        |
| 16b                   | 46                   | 11                        | p   | south                   | <b>Thirteen Mile</b>               | Sunshine                | Holmes               | 1                           | 272   |                  |
| 29                    | 66                   | 14                        | p   | south                   | <b>Twelve Mile</b>                 | west of Meadowbrook Off | Meadowbrook          | 1                           | 400   |                  |
| 10                    | 82                   | 4                         | s   | east                    | <b>Beck</b>                        | K & S Plaza             | K & S Plaza          | 1                           | 200   | 13-14 CIP        |
| 33                    | 91                   | 15                        | s   | west                    | <b>Novi Rd.</b>                    | I-96                    | Crecent              | 2                           | 400   |                  |
| 76                    | 96                   | 24                        | p   | north                   | <b>Grand River</b>                 | Seeley                  | Haggerty             | 1                           | 200   | 16-17 CIP        |
| 149                   | 96                   | 15                        | p   | east                    | <b>Clark</b>                       | Eleven Mile             | Grand River          | 1                           | 208   |                  |
| 49                    | 106                  | 19                        | s   | north                   | <b>Ten Mile</b>                    | Wixom                   | Island Lake          | 1                           | 200   |                  |
| 159                   | 116                  | 19                        | s   | n                       | <b>Ten Mile</b>                    | Oak Point Church        | Oak Point Church     | 1                           | 309   |                  |
| 160                   | 116                  | 19                        | s   | n                       | <b>Ten Mile</b>                    | Island Lake             | Oak Point Church     | 1                           | 372   |                  |
| 166                   | 128                  | 4                         | p   | n                       | <b>West</b>                        | Hudson                  | City Limits          | 1                           | 368   |                  |
| 147                   | 131                  | 31                        | s   | south                   | <b>Nine Mile</b>                   | Hillside                | Napier               | 1                           | 118   |                  |
|                       |                      |                           |   |                         |                                    |                         |                      |                             | 5,086 total feet  |                  |



Completed Sidewalk and Pathway Segments 10/31/06 - 11/01/11

2011 Update

Pathway/Sidewalk Analysis/Prioritization Worksheet

printed 11/03/2011

| Segment Item Number | Located in Section Number | Side of Street Location | Street that segment is adjacent to                  | From                | To                 | Number of pieces in segment | Segment Length (feet) excluding completed pieces and developer planned pieces | notes      |            |
|---------------------|---------------------------|-------------------------|---|---------------------|--------------------|-----------------------------|---|------------|------------|
|                     |                           |                         |   |                     |                    |                             |   |            |            |
|                     |                           |                         | note: does not include privately completed segments |                     |                    |                             |   |            |            |
| 83                  | done                      | 25                      | s north   | Nine Mile           | Meadowbrook        | Haggerty                    | 2   | 3,800      | Done 11    |
| 15                  | done                      | 11                      | s south   | Thirteen Mile       | Novi Rd.           | Old Novi Rd.                | 1   | 350        | done 11    |
| 146                 | done                      | 11                      | c west  | Old Novi            | South Lake         | crossing                    | 2   | 100        | done 11    |
|                     |                           |                         |   |                     |                    |                             | 4,250   | total feet |            |
| 71                  | done                      | 23                      | s north   | Ten Mile            | Hampton Hill       | Brookhaven                  | 1   | 822        | done 10    |
| 139                 | done                      | 25                      | s east  | Willowbrook         | Oaktree            | Guilford                    | 2   | 400        | done 10    |
| 141                 | done                      | 24                      | c crossing  | Ten Mile            | Nilan              | sw to nw                    | 1   | 100        | done 10    |
| 82C                 | done                      | 25                      | s west  | Haggerty            | Ten Mile           | Dunkin Donuts               | 3   | 220        | done 10    |
| 140                 | done                      | 23                      | c crossing  | Hampton Hill        | Ten Mile           | ne to nw                    | 2   | 100        | done 10    |
| 123a                | done                      | 1                       | rt regional   | M-5 Extension       | Fourteen Mile      | Thirteen Mile               | 1   | 5,280      | done 10    |
|                     |                           |                         |   |                     |                    |                             | 6,922   | total feet |            |
| 59                  | done                      | 22                      | p south   | Eleven Mile         | Taft               | Cedar Spring Estates        | 1   | 1,300      | done 09    |
| 125                 | done                      | 15                      | s west  | Clark               | Eleven Mile        | Grand River                 | 1   | 205        | done 09    |
| 75                  | part                      | 24                      | p north   | Grand River         | Measowbrook        | Seeley                      | 1   | 310        | done 09    |
| 80A                 | done                      | 24                      | s north   | Ten Mile            | Meadowbrook        | Haggerty                    | 2   | 411        | done 09    |
| 82A                 | done                      | 25                      | s west  | Haggerty            | Dunkin Dognuts     | Oak Ridge Place             | 3   | 1,180      | done 09    |
| 60A                 | done                      | 22                      | p south   | Eleven Mile         | Clark              | Cedar Spring Estates        | 1   | 300        | done 09    |
|                     |                           |                         |   |                     |                    |                             | 3,706   | total feet |            |
| 136                 | done                      | 21                      | s west  | Bramblewood         | Cidermill          | subdivision                 | 1   | 210        | done 08-09 |
| 63                  | done                      | 22                      | s north   | Ten Mile            | Wildcat            | Taft                        | 1   | 1,580      | done 08-09 |
| 91                  | done                      | 26                      | p south   | Ten Mile            | Meadowbrook        | Orchard Hills North         | 2   | 800        | done 08-09 |
| 96                  | done                      | 28                      | p south   | Ten Mile            | Beck               | Broadmoor Park              | 1   | 250        | done 08-09 |
| 95                  | done                      | 28                      | s east  | Beck                | Ten Mile           | Baker                       | 1   | 300        | done 08-09 |
|                     | done                      | 36                      | s south   | Orchard Hills Place | Haggerty           | west                        | 1   | 375        | done 08-09 |
| 54, 55              | part                      | 20, 29                  | p all   | Ten & Beck legs     |                    |                             |   | 910        | done 08-09 |
| 27                  | part                      | 14                      | s north   | 11 Mile             | Meadowbrook        | west                        |   | 356        | done 08-09 |
|                     |                           |                         |   |                     |                    |                             | 4,781   | total feet |            |
| 42                  | done                      | 17                      | s north   | Eleven Mile         | Novi Middle School | Beck                        | 1   | 3,700      | done 06-07 |
| 56                  | done                      | 21                      | p south   | Eleven Mile         | Beck               | Taft                        | 1   | 1,700      | done 06-07 |
| 57                  | done                      | 21                      | s north   | Ten Mile            | Roma ridge         | Homestead                   | 1   | 770        | done 07-08 |



# Completed Sidewalk and Pathway Segments 10/31/06 - 11/01/11

2011 Update

## Pathway/Sidewalk Analysis/Prioritization Worksheet

printed 11/03/2011

| Segment Item Number  | Located in Section Number | s=sidewalk - p=pathway c=crossing rt=recreation trail |   | Side of Street Location | Street that segment is adjacent to | From              | To                | Number of pieces in segment | Segment Length (feet) excluding completed pieces and developer planned pieces | notes                |
|--|---------------------------|---|---|-------------------------|------------------------------------|-------------------|-------------------|-----------------------------|---|----------------------|
| <b>note: does not include privately completed segments</b> |                           |   |   |                         |                                    |                   |                   |                             |   |                      |
| 85   | done                      | 26  | p | west                    | Meadowbrook                        | Ten Mile          | Mallot            | 2                           | 1,050   | done 07-08           |
| 86   | done                      | 26  | p | west                    | Meadowbrook                        | Chattman          | Nine Mile         | 1                           | 2,025   | done 07-08           |
| 94   | done                      | 28  | s | north                   | Nine Mile                          | Taft              | Beck              | 2                           | 640   | done 07-08           |
| 117  | done                      | 35  | p | west                    | Meadowbrook                        | Mission Pines     | Mirabella Estates | 1                           | 450   | done 07-08           |
| 118  | done                      | 35  | p | west                    | Meadowbrook                        | Mirabella Estates | Eight Mile        | 1                           | 480   | done 07-08           |
|  |                           |   |   |                         |                                    |                   |                   |                             | 10,815  | total feet           |
|  |                           |   |   |                         |                                    |                   |                   |                             | 28,832  | completed public     |
|  |                           |   |   |                         |                                    |                   |                   |                             | 5,766   | completed / year avg |



## Proposed Crossings

from 2011 Non-Motorized Master Plan & 2010 PSPAP

**2010 Update (data through 11/1/10)**

### Pathway/Sidewalk Analysis/Prioritization Worksheet

printed 11/03/2011

| Crossing No. | No Mo Phase | Proposed            | Location                         | Notes  |
|--------------|-------------|---------------------|----------------------------------|--|
| 5130         | 0           | ramps crosswalks    | Thirteen Mile & M-5              | NW to NE previously identified in PSPAP  |
| 5131         | 0           | ramps crosswalks    | Twelve Mile & Haggerty           | NW to NE, NW to SW & SW to SE previously identified in PSPAP   |
| 5132         | 0           | ramps crosswalks    | Beck & Eleven Mile               | NW to NE & NE to SE previously identified in PSPAP   |
| 5133         | 0           | ramps crosswalks    | Wixom & Eleven Mile              | NW to NE & SW to SE previously identified in PSPAP CIP 11-12   |
| 5142         | 0           | ramps crosswalks    | Ten Mile & Churchill             | NW to SW & NE to SE previously identified in PSPAP   |
| 5009         | 1           | ramps crosswalks    | Haggerty & Villagewood           | with road project or bike route seg 9049   |
| 5024         | 1           | crosswalk & signals | Twelve Mile & Donelson           | CIP 2013   |
| 5026         | 1           | crosswalk & signals | Twelve Mile & Caboret            | CIP 2013   |
| 5038         | 1           | ramps signage       | Pontiac Trail & Middle School    | with pathway project segment 9   |
| 5059         | 1           | ramps cross signals | M-5 & Fourteen Mile west         | SW to SE with pathway seg 1  |
| 5060         | 1           | ramps cross signals | M-5 & Fourteen Mile east         | SW to SE with pathway seg 1 NE to SE with Commerce   |
| 5061         | 1           | crosswalk & signals | Haggerty & JR                    | NW to NE with seg 25   |
| 5064         | 1           | ramps crosswalk     | Twelve Mile & Meadowbrook south  | SW-NW w/path seg 30 or 29 previously identified w/Twelve Mile sidewalk with Grand River road project |
| 5001         | 2           | mid-block           | Novi & Algonquin                 | with bike route seg 9067   |
| 5012         | 2           | mid-block           | Meadowbrook north of Chattman    | with local off road path seg 3020 & 3037   |
| 5014         | 2           | bike crossing signs | Beck & Cidermill                 | with bike route 9021   |
| 5016         | 2           | mid-block           | Beck & White Pines               | with bike route seg 9047   |
| 5027         | 2           | mid-block           | Eleven Mile & ITC path           | with foot trail seg 3004   |
| 5029         | 2           | ramps signs         | Nine Mile & ITC path             | with regional trail seg 3003   |
| 5030         | 2           | ramps signs         | Garfield & ITC path              | with regional trail seg 3003   |
| 5033         | 2           | ramps cross signs   | Meadowbrook & Bridge St          | with regional trail seg 123  |
| 5034         | 2           | mid-block           | Eight Mile at Sports Center Park | with regional trail seg 3064   |
| 5039         | 2           | bike crossing signs | Twelve mile & West Park          | with regional trail seg 122d   |
| 5048         | 2           | mid-block           | Taft & White Pines               | with bike route seg 9006   |
| 5049         | 2           | mid-block           | Taft at Novi HS                  | with road project  |
| 5056         | 2           | NW to SW & NE to SE | West Park & West                 | NW- SW w/regional seg 3049 NE-SE w/path seg 8  |
| 5065         | 2           | ramps crosswalks    | Twelve Mile & Meadowbrook north  | SW-SE w/ seg 21 or 22 SE-NE w/seg 19   |
| 5002         | 3           | mid-block           | Nine Mile west of Center         | with bike route seg 9128   |
| 5003         | 3           | mid-block           | Nine Mile & Ennshore             | with local path seg 3034 or bike route seg 9058  |
| 5004         | 3           | mid-block           | Nine Mile & Heatherbrae          | with bike route 9043   |
| 5005         | 3           | mid-block           | Ten Mile west of Ripple Creek    | with bike route seg 9124   |
| 5006         | 3           | mid-block           | Ten Mile & Hampton Hill          | with bike route seg 9007 & 9070  |
| 5007         | 3           | mid-block           | Grand River & Joseph/Sealey      | Scheduled with Grand River road project  |
| 5008         | 3           | crosswalk & signs   | Thirteen & Plateau               | with bike route 9052   |
| 5010         | 3           | mid-block           | Meadowbrook & Marks              | with bike route seg 9043 or 9103   |
| 5011         | 3           | mid-block           | Novi & Galway                    | with bike route seg 9071   |
| 5013         | 3           | ramps signs         | Nine Mile & Singh                | with foot trail seg 3001   |
| 5015         | 3           | mid-block           | Wixom & Delmont                  | with bike route seg 9016   |
| 5017         | 3           | mid-block           | Taft & Galway                    | with bike route seg 9046   |
| 5018         | 3           | mid-block           | Taft & Addington                 | with local off-road path seg 3022  |
| 5019         | 3           | mid-block           | Taft & Novi Woods                | with off-road path 4017  |
| 5020         | 3           | ramps cross signs   | West Park & Bristol              | with bike route signage  |
| 5021         | 3           | mid-block           | Nine Mile & Darcey               | with bike route seg 9046   |
| 5022         | 3           | mid-block           | Ten Mile & Simmons               | with bike route seg 9020   |
| 5023         | 3           | mid-block           | Fourteen Mile & Kingswood        | with road project  |
| 5025         | 3           | ramps cross signals | Twelve Mile & Twelve Oaks        | with local off road trail seg 3025   |
| 5028         | 3           | mid-block           | Ten mile & ITC path              | with foot trail seg 3004   |
| 5031         | 3           | mid-block crossing  | Twelve Mile & ITC path           | with regional trail segment 3006   |
| 5032         | 3           | mid-block crossing  | Grand River & ITC path           | with regional trail segment 3006   |
| 5035         | 3           | mid-block           | Eight Mile & Garfield            | with bike route seg 9111   |
| 5036         | 3           | ramps crosswalk     | Eleven Mile & Arcadia            | with bike route seg 9053   |
| 5037         | 3           | mid-block           | Taft & Jacob                     | with road project  |
| 5040         | 3           | crosswalk & signals | Twelve Mile & Taft               | with road project  |
| 5041         | 3           | mid-block           | Grand River & Fountain Park      | with road project  |
| 5042         | 3           | mid-block           | Grand River west of Karim        | with road project  |
| 5043         | 3           | mid-block           | Nine Mile & Sunrise              | with road project  |
| 5044         | 3           | ramps cross signal  | Novi at Post Office              | with local off road path seg 3055  |
| 5045         | 3           | mid-block           | Taft north of Byrne              | with road project  |
| 5046         | 3           | mid-block           | Nine Mile west of Connemara      | with road project  |
| 5047         | 3           | mid-block           | Taft & Dunbarton                 | with road project  |
| 5050         | 3           | mid-block           | Ten Mile & Bramblewood           | with road project  |



## Proposed Crossings

from 2011 Non-Motorized Master Plan & 2010 PSPAP

2010 Update (data through 11/1/10)

### Pathway/Sidewalk Analysis/Prioritization Worksheet

printed 11/03/2011

| Crossing No. | No Mo Phase | Proposed           | Location                      | Notes                                     |
|--------------|-------------|--------------------|-------------------------------|---|
| 5051         | 3           | mid-block          | Ten Mile & Linwood            | with road project                         |
| 5052         | 3           | mid-block          | Nine Mile & Autumn Park       | with road project                         |
| 5053         | 3           | mid-block          | Beck north of Stratford       | with road project                         |
| 5054         | 3           | ramps crosswalk    | Wixom & Glenwood or Deerfield | CIP 2011 was seg 133                      |
| 5055         | 3           | mid-block          | Novi & Ledgeview              | with road project                         |
| 5057         | 3           | ramps crosswalk    | Fourteen & Novi               | SE to NE with Walled Lake pathway project |
| 5058         | 3           | ramps cross signal | Fourteen & Welch              | with road project?                        |
| 5062         | 3           | ramp signal improv | Beck & Pontiac Trail          | with ADA project                          |
| 5063         | 3           | crosswalk signs    | Beck & Tamarack               | with road project                         |

70 total planned crossing improvements



**Proposed Bike Routes**  
from 2011 Non-Motorized Master Plan  
**2010 Update (data through 11/1/10)**

**Pathway/Sidewalk Analysis/Prioritization Worksheet**

printed 11/03/2011

| Segment No. | Non-Motorized Master Plan Priority | Location              | From_To                       | Length in feet | Notes               |
|-------------|------------------------------------|-----------------------|-------------------------------|----------------|---------------------|
| 9067        | 0                                  | AlgonquinLittleFalls  | Little Rapids west            | 2,521          |                     |
| 9060        | 0                                  | Bristol               | West Park to Pennington       | 1,713          |                     |
| 9113        | 0                                  | Caberet               | 12 to Fountainwalk            | 2,427          |                     |
| 9047        | 0                                  | Chellenham            | Novi west                     | 2,120          |                     |
| 9112        | 0                                  | Dixon                 | 12 to 12 1/2 Mile             | 2,688          |                     |
| 9071        | 0                                  | Galway                | Center to Novi                | 2,715          |                     |
| 9069        | 0                                  | High Meadow           | Greening to Johnathan         | 1,017          |                     |
| 9008        | 0                                  | Jonathan              | High Meadow to west end       | 297            |                     |
| 9079        | 0                                  | New Ct                | East Lake to school           | 296            |                     |
| 9031        | 0                                  | Village Wood          | Heatherbrie to School         | 876            |                     |
| 9049        | 0                                  | Village Wood          | park to Haggerty              | 3,720          |                     |
| 9006        | 0                                  | White Pine            | Taft to Moorgate              | 2,778          | scheduled 2011-2012 |
| 9009        | 0                                  | White Pine            | Beck to Moorgate              | 3,488          | scheduled 2011-2012 |
| 9034        | 1                                  | Addington             | Taft to Devonshire            | 602            |                     |
| 9019        | 1                                  | AddingtonJaslyn       | Wstmont 10 to Devonshire      | 2,917          |                     |
| 9123        | 1                                  | BethanyCherryHill     | Brenda to Highlands           | 5,984          |                     |
| 9124        | 1                                  | BethanyRippleCreek    | MaudeLea toBrenda             | 3,238          |                     |
| 9103        | 1                                  | Broquet_GlennHaven    | Meadowbrook to 8 Mile         | 4,287          |                     |
| 9094        | 1                                  | Center                | Galway to northville          | 483            |                     |
| 9127        | 1                                  | Christina Sussex      | Sullivan to Churchill link    | 715            |                     |
| 9021        | 1                                  | Cidermill             | Beck to Riverview Ln          | 3,972          | scheduled 2011-2012 |
| 9145        | 1                                  | Clark                 | 11 Mile south end             | 2,613          |                     |
| 9082        | 1                                  | Congress              | Constitution to Capitol       | 759            |                     |
| 9057        | 1                                  | CortlandHickoryGrove  | 10 mile to Russet Power Park  | 1,596          |                     |
| 9025        | 1                                  | Eleven_Clark          | Taft to G.River               | 3,739          |                     |
| 9140        | 1                                  | Emerald Forest        | school link to west end       | 1,037          | scheduled 2011-2012 |
| 9029        | 1                                  | Flint                 | bend to G.River               | 213            |                     |
| 9028        | 1                                  | Flint_Main            | Potomic to bend in Flint      | 2,595          |                     |
| 9046        | 1                                  | Galway                | Hillridge to Dartmouth        | 7,058          |                     |
| 9075        | 1                                  | Galway                | 9 Mile to Dartmoor            | 530            |                     |
| 9129        | 1                                  | Galway                | Center to Hillridge           | 621            |                     |
| 9043        | 1                                  | HeatherbraeMarks      | Meadowbrook to Villagewood    | 6,138          |                     |
| 9054        | 1                                  | Kerri_Sullivan        | west end to Christine         | 1,012          |                     |
| 9072        | 1                                  | Moorsgate             | White Pine to Thornton School | 713            |                     |
| 9027        | 1                                  | Potomic               | Main to Congress              | 1,025          |                     |
| 9020        | 1                                  | RiverviewSimmons      | 10 to Cidermill               | 3,596          |                     |
| 9126        | 1                                  | SealyJosephBrenda     | 11 mile to Bethany            | 4,604          |                     |
| 9041        | 1                                  | Seely_Old11           | 11 to 275 trail               | 713            |                     |
| 9056        | 1                                  | ThatcherCavendish     | Sussex link to 10 Mile        | 2,631          |                     |
| 9090        | 2                                  | 11 Mile               | verizon access to Town Center | 1,860          |                     |
| 9125        | 2                                  | 11 Mile               | Meadowbrook to Sealey         | 2,726          |                     |
| 9053        | 2                                  | Arcadia               | 11 Mile to end                | 1,569          |                     |
| 9134        | 2                                  | Arcadia               | Cordoba to west end           | 1,675          |                     |
| 9119        | 2                                  | Bristol               | West Park west part off road  | 3,060          |                     |
| 9012        | 2                                  | Brownstone            | Meadowbrook to Hemingway      | 1,105          |                     |
| 9058        | 2                                  | Chase                 | Reindeer to 9 Mile            | 1,436          |                     |
| 9026        | 2                                  | CresentwoodDrakes Bay | Glenwood ReyesPoint loop      | 16,523         |                     |
| 9001        | 2                                  | Eleven Mile           | Meadowbrook to Verizon access | 1,880          |                     |
| 9042        | 2                                  | Ennishore Balcombe    | 9 Mile to Chattman            | 2,699          |                     |
| 9044        | 2                                  | FawnReinDeer          | Meadowbrook to 9 Mile         | 1,867          |                     |
| 9111        | 2                                  | Garfield              | ITC to 8 Mile                 | 5,596          |                     |
| 9007        | 2                                  | HamptonHill Ridge     | Cherry Hill to Ten Mile       | 2,563          |                     |
| 9052        | 2                                  | Liberty Montmorency   | Chateau to LaRoi              | 2,435          |                     |
| 9128        | 2                                  | NorthHill Midway      | Danbarton to Galway           | 3,983          |                     |
| 9011        | 2                                  | PlateauHemingway Wolf | Burroughs to Liberty          | 2,474          |                     |
| 9070        | 2                                  | QuinceyTamara         | 10 mile to school             | 1,252          |                     |
| 9015        | 2                                  | Reeds Pointe Kelsey   | Drakes Bay to Wixom           | 1,894          |                     |
| 9066        | 2                                  | Silvery               | Borchart to Orchard Park cut  | 940            |                     |
| 9010        | 2                                  | Steinbeck             | Crane to Burroughs            | 1,418          |                     |
| 9098        | 2                                  | Thatcher              | at eyebrow                    | 179            |                     |
| 9143        | 2                                  | Thatcher              | Clark link to Novi link       | 899            |                     |



**Proposed Bike Routes**  
 from 2011 Non-Motorized Master Plan  
**2010 Update (data through 11/1/10)**

**Pathway/Sidewalk Analysis/Prioritization Worksheet**

printed 11/03/2011

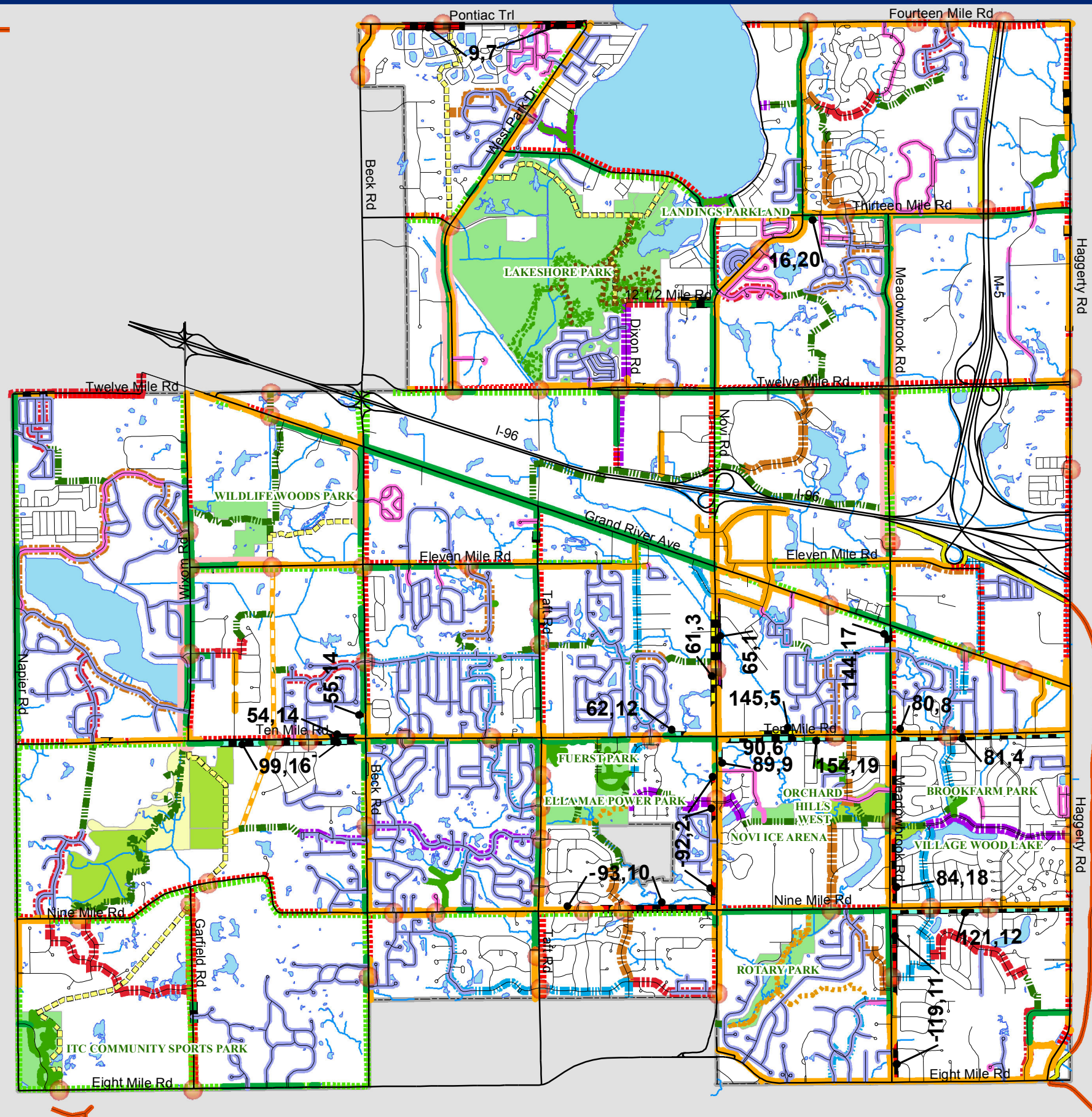
| Segment No. | Non-Motorized Master Plan Priority | Location             | From_To                        | Length in feet | Notes |
|-------------|------------------------------------|----------------------|--------------------------------|----------------|-------|
| 9101        | 2                                  | TownCenter Main      | 11 Mile to Potomic             | 1,417          |       |
| 9122        | 2                                  | Twelve Oaks          | east loop                      | 4,093          |       |
| 9133        | 2                                  | WaverlyIndependan ce | Novi to Chateau link           | 581            |       |
| 9121        | 3                                  | 12 1/2 Mile          | all                            | 2,696          |       |
| 9013        | 3                                  | 12 Mile              | G.River to Napier              | 4,616          |       |
| 9107        | 3                                  | AlbertKnightsbridge  | 12 Mile Island Lake link       | 2,416          |       |
| 9051        | 3                                  | AmyLadeneSavoie      | OrchardHill link to Meridian   | 4,051          |       |
| 9014        | 3                                  | ApplebrookeRoberts   | Deer Run to 9 Mile             | 2,885          |       |
| 9018        | 3                                  | CiderMill Sandpiper  | Beck to ITC connector          | 2,688          |       |
| 9110        | 3                                  | Deer Run             | Garfield to Applebrooke        | 2,238          |       |
| 9016        | 3                                  | Delmont              | Wixom to Woodworth             | 1,545          |       |
| 9093        | 3                                  | Galway               | Novi to Center                 | 2,715          |       |
| 9139        | 3                                  | Hillside Sunday      | 9 Mile to Roberts              | 2,242          |       |
| 9132        | 3                                  | Independance         | Sleepy Hollow to Chateau link  | 606            |       |
| 9106        | 3                                  | KingswoodKingsley    | 14 Mile Chateau link           | 2,380          |       |
| 9138        | 3                                  | LaurelTorino         | 9 Mile to Links of Novi        | 3,531          |       |
| 9142        | 3                                  | Orchard Hill         | 8 Mile to Whispering link      | 2,314          |       |
| 9120        | 3                                  | Sandstone            | Novi to Tollgate link          | 2,040          |       |
| 9104        | 3                                  | SleepyHollowColling  | Independance to HaverHill link | 1,743          |       |
| 9136        | 3                                  | Terra Del Mar        | 10 Mile to Drakes Bay          | 2,900          |       |
| 9017        | 3                                  | Woodworth            | Delmont to ITC loop            | 542            |       |

total planned bike routes (feet) 200,318



# City of Novi Pathway and Sidewalk Prioritization Analysis and Process

As of November 1, 2011



### Map Legend

|  |                                    |
|--|------------------------------------|
| <b>Existing On-Road Pathways &amp; Sidewalks</b> | Planned Crossing Improvement       |
| Existing Major Road Pathway                      |                                    |
| Existing Major Road Sidewalk                     | <b>Off Road Paths Trails</b>       |
| Local Sidewalk Both Sides                        | Existing Regional Path             |
| Local Sidewalk One Side                          | Planned Regional Path              |
| <b>Proposed On-Road Pathways &amp; Sidewalks</b> | Exist Neighboring Regional Path    |
| Scheduled Pathway                                | Existing Paved Local Path          |
| Top 20 Priority Pathway                          | Planned Paved Local Path           |
| Pathway by Developer                             | Exist Unpaved Path Planned to Pave |
| Other Proposed Pathway                           | Exist Unpaved Path                 |
| Scheduled Sidewalk                               | Planned Unpaved Path               |
| Top 20 Priority Sidewalk                         | Mountain Bike Path                 |
| Sidewalk by Developer                            | <b>Bike Routes</b>                 |
| Other Proposed Sidewalk                          | <b>Priority Rank</b>               |
| Planned On-Road Regional Upgrade                 | 0                                  |
| <b>XX, XX = Top 20 Segments</b>                  | 1                                  |
|  | 2                                  |
|  | 3                                  |



**City of Novi**  
 Dept. of Community Development  
 City Hall / Civic Center  
 45175 W Ten Mile Rd  
 Novi, MI 48375  
 cityofnovi.org

Map Author: Mark Spencer  
 Date: 11/3/11  
 Project: Non-Motorized Planning Map  
 Version #:1.0



1 inch = 3,583 feet

**MAP INTERPRETATION NOTICE**

Map information depicted is not intended to replace or substitute for any official or primary source. This map was intended to meet National Map Accuracy Standards and use the most recent, accurate sources available to the people of the City of Novi. Boundary measurements and area calculations are approximate and should not be construed as survey measurements performed by a licensed Michigan Surveyor as defined in Michigan Public Act 132 of 1970 as amended. Please contact the City GIS Manager to confirm source and accuracy information related to this map.

