



WALKABLE NOVI COMMITTEE

AGENDA

July 11 2019 at 6:00 p.m.

Novi Civic Center

Mayors Conference Room

45175 W. Ten Mile, Novi, MI 48375

(248) 347-0475

Members: John Avdoulos, Supriya Joshi Dave Staudt, Julie Maday and Andrew Mutch

Staff Support: Sri Komaragiri, Planner, Community Development
Barbara McBeth, City Planner, Community Development
Hannah Smith, Planning Assistant, Community Development
Jeff Muck, Director of Parks, Recreation and Cultural Services
Kate Richardson, Plan Review Engineer

ROLL CALL

APPROVAL OF AGENDA

AUDIENCE PARTICIPATION

MATTERS FOR DISCUSSION

- a. Discussion of Draft Top 20 segments for Annual Non-Motorized Prioritization Update

STAFF UPDATES

1. Planning Update
 - a. 2018-2019 Pedestrian Bike Accidents in Novi
2. Engineering Update
 - b. Active Non-Motorized Project Portfolio for Engineering Division
3. Parks, Recreation and Cultural Service Update

COMMUNICATIONS

ADJOURN

MEMORANDUM



TO: WALKABLE NOVI COMMITTEE
FROM: SRI KOMARAGIRI, PLANNER
SUBJECT: ANNUAL NON-MOTORIZED PRIORITIZATION: TOP 20 SEGMENTS
DATE: JULY 08, 2019

This memo provides a brief summary of documents included in the packet for Walkable Novi Committee meeting on July 11, 2019. As discussed at the last meeting the schedule for 2019-20 Annual Non-motorized prioritization update has been pushed forward to align with the City draft budget schedule. Following documents are included in the packet:

1. A list of all sidewalks that are either scheduled for construction, or are under construction or are approved as part of site plan reviews are identified. Site plans which are at the final stamping set approval phase are selected for this list. These segments are removed from the master list that is rated for rankings.
2. The ratings for 'Segment Completion' item under Tier 1 category is updated as discussed at the last meeting. Rest of the ratings remains unchanged.
3. This table provides a summary of changes made to the master list. Changes include, removal of sidewalks as noted in item 1, splitting sidewalks as noted in the table and identifying sidewalks that include a highway crossing or a railroad crossing. Refer to the table for more notes. The summary is provided by Sections within the City.
4. A graph that provides the total length of sidewalk gaps per each section is attached.
5. A map is provided with the same information as above with a zoning map overlay. This would help us identify the sections with predominantly residential use and related information about sidewalk gaps.
6. A table that lists the draft Top 20 segments. There is no significant difference in rankings due to change to 'Segment Completion' category. Four new segments made it to Top 20. Rests of them are carried over from last year.
7. Tier 1 and Tier 2 category ratings and ranks for all missing segments within City of Novi.
8. A list of pedestrian accidents from July 1, 2018 to June 30, 2019 provided by the City of Novi Police Department.

If the Committee approves the draft Top 20, staff will complete the draft report and present at the next Walkable Novi Committee meeting in August, a date to be determined at the upcoming meeting.

TABLE 2.1: 2019-2020 Completed Non-Motorized Improvements or under construction or scheduled for construction (at time of report)

Segment Item #	Section #	Type	Side of Street/ Other	Location		Segment Length (ft.)
City Projects						
39	17	S	West	Beck Road	City Project	363
43	18	S	West	Wixom Road	City Project	644
45	18	S	South	Twelve Mile Road	Northwest Neighborhood Park (Parks project)	332
52c (part)	20	S	South	Eleven Mile	Bosco Park (City Project)	375
53	20	S	West	Beck Road	Bosco Park (City Project)	1150
102b (part)	30	P	North	Nine Mile	ITC Parthway	487
98b	30	P	North	Nine Mile	ITC Parthway	830
120A*	36	S	West	Haggerty	City Project (Eight Mile to Orchard Hill)	1390
120B*	36	S	West	Haggerty	City Project (Orchard Hill to High Point)	375
120c*	36	S	West	Haggerty	City Project (High Point to Nine Mile)	600
2017-18 City of Novi Total						6,546
Private Development Projects						
1a (part)	1	S	South	Fourteen Mile	Berkshire E-Supply	637
2a (part)	1	S	West	Haggerty	Berkshire E-Supply	808
1a (part)	1	S	South	Fourteen Mile	Speedway	134
2a (part)	1	S	West	Haggerty	Speedway	111
18a (part)	11	S	north	Twelve Mile	Novi Senior Living	322
20	12	S	West	Haggerty Road	Hillside Office Park	451
62	22	S	North	Ten Mile	Emerson Park off-site boardwalk	383
68	23	S	South	Grand River Avenue	Jaguar	345
70	23	P	West	Meadowbrook	City Project (between Grand River and Eleven Mile)	961
77 (part)	24	S	West	Haggerty Road	Regency Lot 7	1031
88 (part)	26	S	North	Nine Mile	Woodbridge Park	502
99b	29	S	South	Ten Mile	Valencia Estates	1059
2017-18 Development Total						6,744

TABLE 3.1: Tier and Tier 2 Categories

All proposed adjacent to road pathway & sidewalk segments are reviewed against a set of Tier 1 criteria & assigned points based on the segment's potential service benefits to the citizens of the City, the segments are ranked by the Tier 1 points & the segments receiving the top 20 points are assigned Tier 2 points

TIER 1 CATEGORIES

1 BICYCLE & PED. ACCIDENTS
 (intersection accidents only included when sidewalk or pathway connection is missing, 1/98 to 9/13)
 5 = 1 accident; 10 = 2 accidents; 15 = 3 accidents
 20 = 4 or more accidents

TRAFFIC SAFETY

Each segment is given a weightage based on the Counts. The values are then multiplied by a multiplier based on respective speed limits to get the final rating

2 TRAFFIC COUNTS
 (ADT) 2010 Non-Motorized MP

0 = <10K ADT	TRAFFIC SPEED
5 = 10K-20K ADT	< 30 mph = x 1
10 = >20K ADT	35-40 mph= x 1.2
	>=45 mph = x 1.5

ACCESS TO SCHOOLS

All three categories are grouped into one to simplify and avoid double counts.

3 Final rating would be based on number of schools with the same criteria. i.e. # elem & intermediate schools w/in 1 mile and so on)
 4.5 = 1 school
 9 = 2+ schools

(# elem & intermediate schools w/in 1 mile)	(# middle & high schools w/in 2 miles)	(# private schools over 100 students w/in 2 miles)
4.5 = 1 school	4.5 = 1 school	4.5 = 1 school
9 = 2+ schools	9 = 2+ schools	9 = 2+ schools

ACCESS TO PARKS

4 (# w/in 1 mile)
 6 = 1 park;
 12 = 2+ parks

ACCESS TO HOTELS

5 # shopping areas w/in 1 mile)
 2 = 1 Hotel;
 4 = 2+ Hotels

ACCESS TO SHOPPING

6 (# shopping areas w/in 1 mile)
 3.5 = 1 shopping area; 7 = 2+ shopping areas

ACCESS TO PLACES OF WORSHIP

8 (# places of worship w/in 1 mile)
 2 = 1 places of worship;
 4 = 2+ places of worship

9	CONNECTED TO NEIGHBORING SIDEWALK/ REGIONAL TRAIL SYSTEM 7 = connected to neighboring sidewalk system 14 = connected to regional trail system	
10	POPULATION SERVED 0 = low density; 8 = medium density; 16 = high density	
11	SEGMENT COMPLETION 3.5 = 1/2 to 1 mile; 7 = over 1 mile	Current Rating revised with this update 5 = 1/2 to 1 mile; 10 = 1 to 2 miles; 15 = over 2 miles
12	CONSIDERABLE PUBLIC INTEREST 5 = top 15 survey responses, resident petitions & documented segments requested by groups & govt agencies	
13	NON-MOTORIZED MASTER PLAN 20 = initial investment 15 = major corridor	
TIER 2 CATEGORIES (only Top 20 Tier 1 segments receive tier 2 points)		
1	EASE OF CONSTRUCTION (easy/hard) 0 = hard; 8 = medium hard; 16 = easy	
2	RIGHT-OF-WAY AVAILABILITY (based on % available) 0 = 0%; 4.5 = 25%; 9 = 50%; 13.5 = 75%; 18 = 100%	
3	OTHER FUNDING SOURCES (based on % available) 0 = 0%; 4.5 = 25%; 9 = 50%; 18 = 80%+	
4	OPPOSITE SIDE SIDEWALK OR PATHWAY (road < 12,000 ADT & 35 mph < existing or planned with higher priority ranking) -20 = complete section link ; -10 = one direction section link	
5	PRIVATE DEVELOPMENT POTENTIAL (Positive Points) 8 = little potential 4 = partial potential within 10 years 2 = dev potential within 10 years 0 = SP submitted	
6	EVIDENCE OF EXTENSIVE PEDESTRIAN USE 0 = No Evidence 10 = Worn Path	
	* This a new category added based on previous discussions. Engineering department will perform site visits to identify if pedestrians are using the unbuilt paths.	

SUMMARY OF UPDATES TO THE LIST OF MISSING SEGMENTS (BY SECTION)

	Segments less than 400 feet
	Further split into multiple segments for reasons listed under 'Notes'
	Segment includes a Highway or a Railroad crossing
	Full or partial sidewalks on the other side of the street
	Assigned CIP Year
	Deferred until construction
Text in Red	Updated based on current changes

Notes	2018-19 Rank	2019-20 Rank	Segment Item #	S= 6 ft. P= 8 ft.	Side of Street	Location	From	To	# of Pieces	Segment Length (ft.) excluding Developer Planned & Completed Pieces	CIP YEAR
SECTION 1									7	5,953	
Split into 2	97	100	1a	S	south	Fourteen Mile	Haggerty Rd.	M-5	1	1,659	
Remaining piece west of Berkshire project till M-5		100	1b	S	north	Fourteen Mile	Berkshire	M-5 (crossing)	1	347	
	114	123	2b	S	west	Haggerty	Thirteen Mile	39525 McKenzie Drive	1	424	
Split into 2; 2c is the remaining piece between Berkshire and Speedway project	114	123	2a	S	west	Haggerty	Berkshire	39500 Mackenzie Dr	1	1,518	
		123	2c	S	west	Haggerty	Speedway	50-22-01-200-039	1	215	
Split into 2; Segment 3 had two pieces which are far apart	77	78	3a	S	north	Thirteen Mile	Haggerty Rd.	39550 Thirteen Mile Rd	1	278	
		78	3b	S	north	Thirteen Mile	Cabot Drive	M-5 (crossing)	1	1,512	
SECTION 3									5	9,242	

Notes	2018-19 Rank	2019-20 Rank	Segment Item #	S= 6 ft. P= 8 ft.	Side of Street	Location	From	To	# of Pieces	Segment Length (ft.) excluding Developer Planned & Completed Pieces	CIP YEAR
	90	106	163	P	north	South Lake	Lakeshore Park	Landings Park	1	1,180	
	90	106	164	P	south	South Lake	Lakeshore Park	Elm	1	720	
	102	115	165	P	south	South Lake	Henning	Lakeshore Park	1	2,160	
	73	74	162a	S	north	South Lake	West Park	E of Lilley Trail	1	2,000	
	102	115	162b	S	north	South Lake	E of Lilley Trail	Lakeshore Park	1	3,182	
SECTION 4									6	4,589	
	105	118	8	P	west	West Park	Bristol Corners	West	2	1,648	
	125	138	166	P	north	West	Hudson	City Limits	1	354	
	125	138	170	S	north	West	West Park	American Interiors	1	389	
Split into 2; ; Segment 6 had two pieces which are far apart	25	27	6a	P	west	West Park	Pontiac Trail	45182 West Park Dr	1	418	
		27	6b	P	west	West Park	45182 West Park Dr	Bristol Corners	1	1,780	
SECTION 9									4	4,833	
	82	91	11	S	north	Twelve Mile	Novi Concrete	West Park	1	1,334	
	120	131	167	P	south	West	West Park	City Limits	1	1,312	
	107	91	12a	S	north	Twelve Mile	West Park (railroad)	Liberty Park	1	1,838	
	86	110	12b	S	north	Twelve Mile	Liberty Park	Liberty Park	1	349	
SECTION 10									2	1,326	
	101	86	14a	S	north	Twelve Mile	Carlton Forest	BP	1	997	
	112	120	14b	S	north	Twelve Mile	Stoneridge	end of adjacent parcel	1	329	

Notes	2018-19 Rank	2019-20 Rank	Segment Item #	S= 6 ft. P= 8 ft.	Side of Street	Location	From	To	# of Pieces	Segment Length (ft.) excluding Developer Planned & Completed Pieces	CIP YEAR
SECTION 11									4	6,251	
	72	66	17	S	east	Old Novi	Linhart Avenue	Thirteen Mile	1	1,611	
	7	3	18a	S	north	Twelve Mile	Twelve Oaks	Meadowbrook	2	2,613	
	20	15	18b	S	north	Twelve Mile	Novi Rd.	Twelve Oaks	1	2,027	
SECTION 12									4	4,602	
Split into 2; One segment involved ITC corridor, other involves a highway crossing	34	52	19a	S	north	Twelve Mile	27925 Summit Dr	40020 Twelve Mile Rd	1	2,519	
		52	19b	S	north	Twelve Mile	ITC Corridor		1	100	
Split into 2; Segment 20 had three pieces which are far apart	118	114	20a	S	west	Haggerty	39600 Lewis Dr	Twelve Mile		1,795	
		127	20b	S	west	Haggerty	29199 Haggerty Rd	29199 Haggerty Rd	4	188	
SECTION 13									6	8,938	
Split into 2; Two pieces are far apart and one of them involves a highway crossing	42	43	25a	S	west	Haggerty	Twelve Mile	Novi Research Park	1	1,019	
		43	25b	S	west	Haggerty	Novi Research Park	section line	1	3,167	
	88	103	26	S	north	Eleven Mile	Campus Tech	Seeley	1	966	
	88	22	21a	P	south	Twelve Mile	Meadowbrook	Energy Way	2	3,451	
	39	57	21b	P	south	Twelve Mile	Energy Way	Haggerty	1	335	
SECTION 14									6	5,889	
Part of segment is part of Chick-Fil-A which is under review	63	71	28	P	east	Novi Rd.	south Twelve Oaks entrance	North Twelve Oaks entrance	2	988	
	52	24	168	P	east	Novi Rd.	across 96		1	1,957	

Notes	2018-19 Rank	2019-20 Rank	Segment Item #	S= 6 ft. P= 8 ft.	Side of Street	Location	From	To	# of Pieces	Segment Length (ft.) excluding Developer Planned & Completed Pieces	CIP YEAR
	36	40	30a	P	west	Meadowbrook	26901 Meadowbrook Rd	41500 Gardenbrook Rd(I-96 Crossing)	1	2,034	
	44	54	30b	P	west	Meadowbrook	27551 Meadowbrook Rd	27421 Meadowbrook Rd	2	910	
SECTION 15									10	7,929	
	39	38	33	S	west	Novi Rd.	I-96	Crescent	2	840	
	74	111	34	S	north	Eleven Mile	Clark	Taft	2	2,770	
	58	65	35	S	east	Taft	Eleven Mile	Grand River	2	1,648	
	79	84	149	P	east	Clark	Eleven Mile	Grand River	1	601	
		35	32a	S	west	Novi Rd.	Twelve Mile	West Oaks	2	1,347	
		40	32b	S	west	Novi Rd.	I-96 north side	I-96 south side	1	723	
SECTION 16									11	12,152	
Split into 2; Two pieces are far apart, along two different roads and one of them involves a highway crossing; 169b was redrawn to keep within the City limits	31	47	169a	P	south	Twelve Mile	46675 Twelve Mile Rd	I-96	1	2,357	
		47	169b	P	west	Beck/I-96	I-96 ROW		2	1,189	
Split into 2; Two pieces are far apart and one of them involves a railroad crossing	50	57	31a	S	south	Twelve Mile	Cabaret Dr	Hino Motors (railroad crossing)	1	2,035	
		69	31b	S	south	Twelve Mile	Hino Motors	West Park Drive	1	1,449	
	65	70	37a	S	north	Eleven Mile	Beck	Mandalay Cir E	4	2,392	
	62	61	37b	S	north	Eleven Mile	Mandalay Cir E	Taft	1	496	
	4	6	38	S	east	Beck	Grand River	Eleven Mile	1	2,234	23-24

Notes	2018-19 Rank	2019-20 Rank	Segment Item #	S= 6 ft. P= 8 ft.	Side of Street	Location	From	To	# of Pieces	Segment Length (ft.) excluding Developer Planned & Completed Pieces	CIP YEAR
SECTION 17									7	3,040	
	58	51	40	P	south	Grand River	Providence Hospital	Wixom	3	843	
	44	39	41	S	east	Wixom	Target	Deerfield Elementary	2	1,516	
	53	46	150	s	north	Grand River	Sams Way	Providence	2	681	
SECTION 18									1	2,626	
	48	33	44	P	east	Napier	Knights Bridge	Island Lake	1	2,626	
SECTION 19									2	504	
	111	100	49	S	north	Ten Mile	Wixom	Island Lake	1	203	
	118	99	159	S	north	Ten Mile	Oak Point Church	Oak Point Church	1	301	
SECTION 20									5	5,722	
	39	50	51	S	north	Ten Mile	Dinser	Woodham	1	1,799	23-24
	27	29	52a	P	south	Eleven Mile	Wixom	E side ITC Corridor	2	2,566	
	31	35	52b	P	south	Eleven Mile	Oberlin	Bosco	1	641	
	44	47	52c	P	south	Eleven Mile	Beck	Entrance to Bosco Park	1	716	
SECTION 21									2	3,781	
	21	12	58a	S	east	Beck	Ashley	Cider Mill	1	1,228	
	18	12	58b	S	east	Beck	Cider Mill	Sierra	1	2,553	
SECTION 22									3	4,462	
	49	67	60	P	south	Eleven Mile	Clark	Creek Crossing	1	244	

Notes	2018-19 Rank	2019-20 Rank	Segment Item #	S= 6 ft. P= 8 ft.	Side of Street	Location	From	To	# of Pieces	Segment Length (ft.) excluding Developer Planned & Completed Pieces	CIP YEAR
	23	21	64	S	east	Taft	Ten Mile	Eleven Mile	2	4,218	23-24
SECTION 23									4	1,427	
	6	9	66	P	south	Grand River	Sixth Gate	Main Street	2	293	20-21
Will be timed when the private developer builds Jaguar	15	11	68	P	south	Grand River	Funeral Home	Meadowbrook	1	457	
Part of Sakura Way project, which is under review	27	19	72	P	north	Grand River	Town Center	Amstaff building	1	677	
SECTION 24									12	10,405	
	96	106	74	S	east	Seeley	Eleven Mile	Grand River	1	2,655	
	55	54	75	P	north	Grand River	Seeley	Meadowbrook	1	1,038	
Split into 2; Segment 77 had two pieces which are far apart	81	113	77a	S	west	Haggerty	Regency Lot 7	Section Line	1	1,037	
		85	77b		west	Haggerty	Grand River	Regency Lot 7	1	499	
	54	67	78a	P	south	Grand River	Meadowbrook	Joseph	1	1,967	
	74	86	78b	P	south	Grand River	Joseph	Bashian	1	290	
	74	86	78c	P	south	Grand River	Olde Orchard	Karim	1	279	
	58	86	78d	P	south	Grand River	Karim	Haggerty	1	383	
Split into 2; Segment 79 had three pieces which are far apart; One involves wetlands	38	29	79a	S	east	Meadowbrook	Ten Mile	Clermont Ave	1	526	
		29	79b	S	east	Meadowbrook	Clermont Avenue	Scarborough Lane	1	661	
		29	79c	S	east	Meadowbrook	Scarborough Lane	Grand River	1	872	
	1	1	80b	S	north	Ten Mile	Meadowbrook	Willowbrook Estates	1	198	

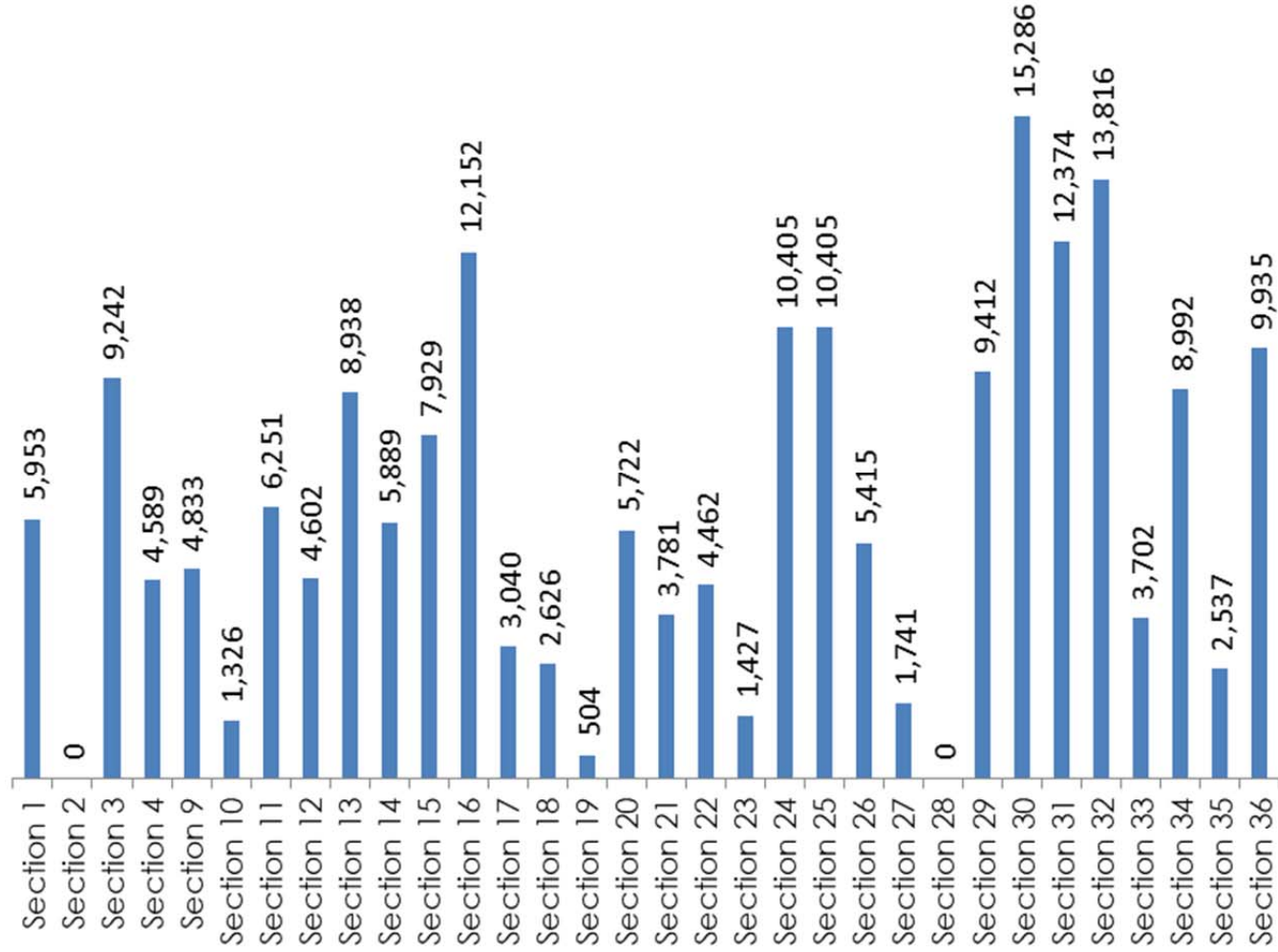
Notes	2018-19 Rank	2019-20 Rank	Segment Item #	S= 6 ft. P= 8 ft.	Side of Street	Location	From	To	# of Pieces	Segment Length (ft.) excluding Developer Planned & Completed Pieces	CIP YEAR
SECTION 25									7	10,405	
	3	2	81a	P	south	Ten Mile	Meadowbrook	Willowbrook	1	2,529	
	2	4	81b	P	south	Ten Mile	Willowbrook	Haggerty	3	2,634	
	19	17	82b	S	west	Haggerty	Pavilion Ct Apartments	Nine Mile	1	539	
	12	14	84a	S	east	Meadowbrook	Ten Mile	Chattman	1	2,323	23-24
	10	15	84b	S	east	Meadowbrook	Nine Mile	Chattman	1	2,380	23-24
SECTION 26									3	5,415	
	50	57	87	S	north	Nine Mile	Meadowbrook	Venture	1	2,128	
	31	35	88	S	north	Nine Mile	RR crossing	Shiro	1	1,165	23-24
	17	5	90	P	south	Ten Mile	Maly Dental	Novi Ridge Apartments	1	2,122	23-24
SECTION 27									3	1,741	
	13	10	93a	S	north	Nine Mile	Novi Rd.	Plaisance	1	1,122	23-24
	8	8	93b	S	north	Nine Mile	Plaisance	Taft	2	619	23-24
SECTION 29									7	9,412	
	61	62	97a	P	west	Beck	Nine Mile	Cheltenham	1	858	
	27	22	97b	P	west	Beck	Cheltenham	Iriquois	1	1,059	
	55	62	98a	S	north	Nine Mile	Kensington	Vasilios Court	1	2,589	
	55	62	98b	S	north	Nine Mile	Vasilios Court	ITC Pathway	2	2,167	
	14	7	99a	P	south	Ten Mile	Wixom	400' E of Lynwood	2	2,739	23-24

Notes	2018-19 Rank	2019-20 Rank	Segment Item #	S = 6 ft. P = 8 ft.	Side of Street	Location	From	To	# of Pieces	Segment Length (ft.) excluding Developer Planned & Completed Pieces	CIP YEAR
SECTION 30									18	15,286	
	108	120	155	P	south	Ten Mile	Links of Novi		1	1,693	
	122	132	156	P	south	Ten Mile	50577 Ten Mile Road	50155 Ten Mile Road	1	1,007	
	122	132	157	P	south	Ten Mile	50155 Ten Mile Road	Fire Station 4 Parkland	1	1,709	
	112	123	158	P	east	Napier	Links of Novi		1	1,321	
Split into 4; each piece of previous segment fronts a different single family property and are far apart	122	134	100a	P	south	Ten Mile	Wixom	Fire Station 4 Parkland	4	143	
		134	100b	P	south	Ten Mile	50155 Ten Mile Road		1	148	
		134	100c	P	south	Ten Mile	50577 Ten Mile Road		1	148	
		134	100d	P	south	Ten Mile	51395 Ten Mile Road	Napier	1	147	
	93	80	101a	P	east	Napier	Ten Mile	Links of Novi	1	1,015	
	86	103	101b	P	east	Napier	Links of Novi	Nine Mile	1	4,127	
	93	103	102a	S	north	Nine Mile	Napier	W of Evergreen Ct	2	3,012	
	93	72	102b	S	north	Nine Mile	E of Evergreen Ct	Garfield	3	816	
SECTION 31									6	12,374	
	82	91	104	P	east	Napier	Eight Mile	Community Sports Park	1	2,552	
	102	115	107	P	south	Nine Mile	Garfield	Hillside	3	4,157	
	121	130	106a	P	west	Garfield	Eight Mile	Deer Run	1	3,006	
	97	109	106b	P	west	Garfield	Deer Run	Nine Mile	1	2,659	
SECTION 32									8	13,816	

Notes	2018-19 Rank	2019-20 Rank	Segment Item #	S = 6 ft. P = 8 ft.	Side of Street	Location	From	To	# of Pieces	Segment Length (ft.) excluding Developer Planned & Completed Pieces	CIP YEAR
	114	128	108a	S	east	Garfield	Eight Mile	Chianti	1	1,941	
	114	128	108b	S	east	Garfield	Chianti	Nine Mile	1	3,558	
	82	91	110a	P	west	Beck	Eight Mile	Casa Loma	1	1,473	
	79	95	110b	P	west	Beck	Casa Loma	Nine Mile	2	1,257	
	65	74	111a	P	south	Nine Mile	Beck	Garfield Conservation area	1	2,654	
	65	74	111b	P	west	Nine Mile	Garfield Conservation area	Vasilios Court	1	1,224	
	65	74	111c	P	south	Nine Mile	Vasilios Court	ITC Pathway	1	1,709	
SECTION 33									5	3,702	
	44	57	112	S	east	Beck	Nine Mile	City Limits	2	1,114	
	97	96	113a	P	south	Nine Mile	Beck	Barclay	1	641	
	85	96	113b	P	south	Nine Mile	Galway	Anna Maria	1	1,537	
	97	112	113c	P	south	Nine Mile	Anna Maria	Taft	1	410	
SECTION 34									5	8,992	
	36	40	115	S	west	Novi Rd.	Timber Ridge development	City Limits	1	1,591	
	106	119	114a	S	east	Taft	Byrne	City Limits	1	1,113	
	92	98	114b	S	east	Taft	Nine Mile	Byrne	1	1,423	
	88	73	116a	P	south	Nine Mile	Chelsea	Center	1	2,183	
	77	86	116b	P	south	Nine Mile	Center	Taft	1	2,682	

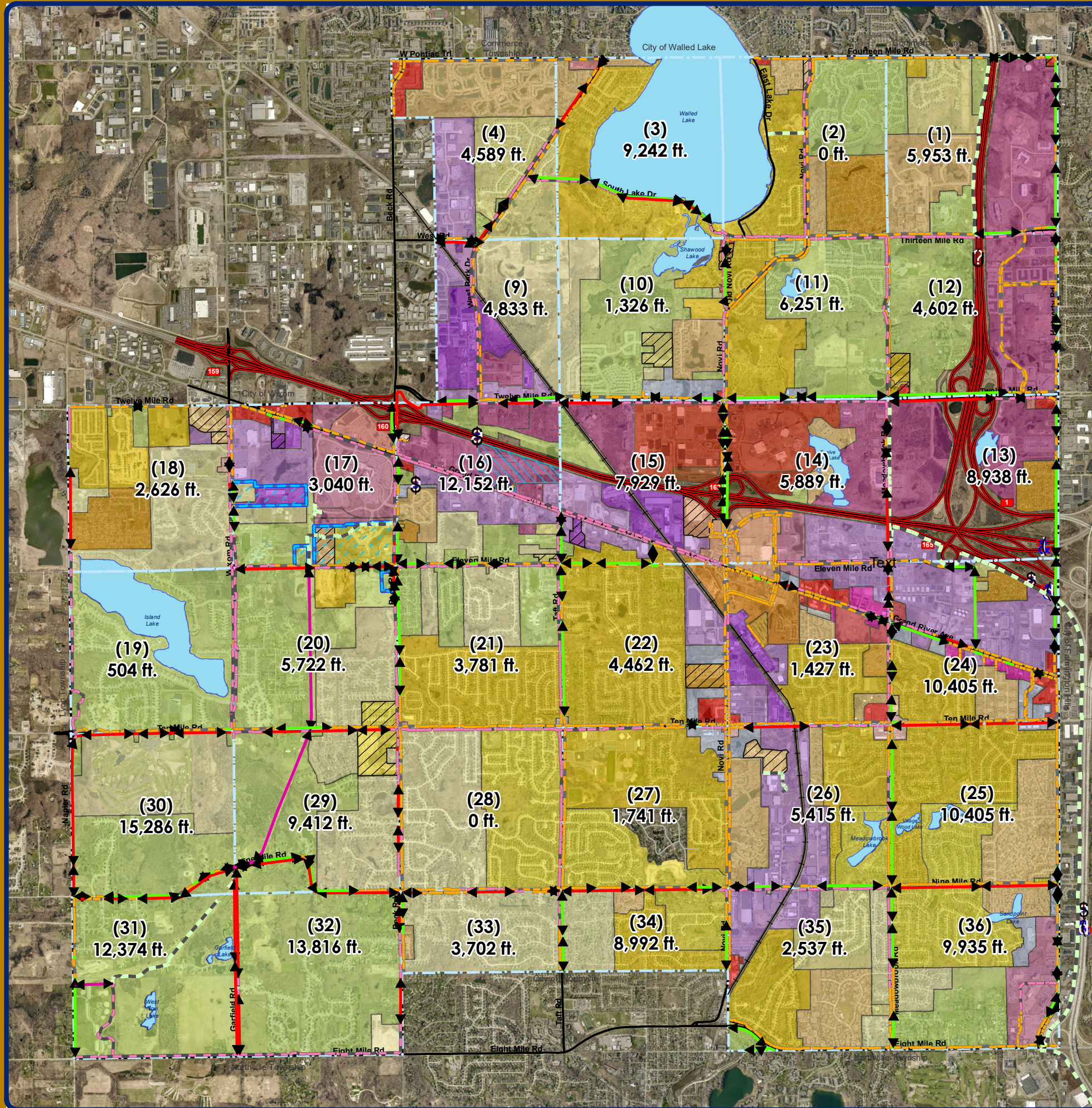
Notes	2018-19 Rank	2019-20 Rank	Segment Item #	S= 6 ft. P= 8 ft.	Side of Street	Location	From	To	# of Pieces	Segment Length (ft.) excluding Developer Planned & Completed Pieces	CIP YEAR
SECTION 35									4	2,537	
	65	80	171	P	south	Eight Mile	Griswold	City Limits	1	1,439	
	108	120	172	P	west	Griswold	Eight Mile	City Limits	1	727	
	65	80	174	P	south	Griswold	Eight Mile	City Limits	1	143	
	65	80	175	P	south	Eight Mile	Griswold	City Limits	1	228	
SECTION 36									7	9,935	
	5	18	153	S	east	Haggerty	City limits	Taco Bell	1	501	
	64	54	173	S	west	Haggerty	Eight Mile	Big Boy Restaurant	1	349	
	16	24	119a	S	east	Meadowbrook	Nine Mile	Singh Blvd	1	1,075	21-22
	42	43	119b	S	east	Meadowbrook	Singh Blvd	N of Llewelyn	1	1,438	
	24	24	119c	S	east	Meadowbrook	Eight Mile	N of Llewelyn	1	1,191	
	22	19	121a	P	south	Nine Mile	Meadowbrook	Sunrise	1	2,899	
	34	34	121b	P	south	Nine Mile	Sunrise	Haggerty	1	2,482	

Total Length of Future Sidewalk Segments per Section



Future Segments by Section

City of Novi, Michigan



Zoning Districts

- ◆ Future Pathway Major
- ◆ Future Sidewalk Major
- ◆ Future Pathway Multi-Use
- Existing Major Pathway
- Existing Pathway Multi-Use
- Existing Major Sidewalk
- Sections
- Freeway
- Major Streets
- R-A: Residential Acreage
- R-1: One-Family Residential
- R-2: One-Family Residential
- R-3: One-Family Residential
- R-4: One-Family Residential
- RT: Two-Family Residential
- RM-1: Low-Density Multiple-Family
- RM-2: High-Density Multiple-Family
- MH: Mobile Home
- B-1: Local Business
- B-2: Community Business
- B-3: General Business
- C: Conference
- EXPO: Expo
- GE: Gateway East
- FS: Freeway Service
- I-1: Light Industrial
- I-2: General Industrial
- NCC: Non-Center Commercial
- OS-1: Office Service
- OSC: Office Service Commercial
- OST: Office Service Technology
- EXO: OST District with EXO Overlay
- RC: Regional Center
- P-1: Vehicular Parking
- TC: Town Center
- TC-1: Town Center-1

Zoning Overlay

Overlay Name

- Exposition (EXO)
- Planned Suburban Low-Rise (PSLR)
- Planned Rezoning (PRO)



City of Novi
 Community Development Dept. &
 Integrated Solutions Team
 City Hall
 45175 Ten Mile Rd
 Novi, MI 48375
 cityofnovi.org



Copyright 2019, City of Novi, Michigan

No part of this product shall be reproduced or transmitted in any form or any means, electronic or mechanical, for any purpose without prior written permission from the City of Novi.

This map complies with the National Map Accuracy Standards. The City of Novi and its Department of Information Technology assume no legal responsibility for the content and/or inappropriate use of this document.

ADOPTED BY:	NOVI CITY COUNCIL
ADOPTION DATE:	MAY 7, 2018
EFFECTIVE DATE:	MAY 22, 2018
MAYOR:	ROBERT J. GATT
CITY MANAGER:	PETER AUGER
CITY CLERK:	CORTNEY HANSON
MAP PRINTING DATE:	JUNE 19, 2019

TABLE 3.2: 2018-19 Top 20 Priority Pathway and Sidewalk Segments including deferred segments

Overall Segment Rank	Segment Item #	Section #	Type	Side of Street	Location	From	To	# of Pieces in Segment	Segment Length (ft.) excluding Developer Planned & Completed pieces	Projected CIP Year
1	80b	24	S	north	Ten Mile	Meadowbrook	Willowbrook Estates	1	198	
2	81a	25	P	south	Ten Mile	Meadowbrook	Willowbrook	1	2,529	
3	18a	11	S	north	Twelve Mile	Twelve Oaks	Meadowbrook	2	2,613	
4	81b	25	P	south	Ten Mile	Willowbrook	Haggerty	3	2,634	
5	90	26	P	south	Ten Mile	Maly Dental	Novi Ridge Apartments	1	2,122	23-24
6	38	16	S	east	Beck	Grand River	Eleven Mile	1	2,234	23-24
7	99a	29	P	south	Ten Mile	Wixom	400' E of Lynwood	2	2,739	23-24
8	93b	27	S	north	Nine Mile	Plaisance	Taft	2	619	23-24
9	66	23	P	south	Grand River	Sixth Gate	Main Street	2	293	20-21
10	93a	27	S	north	Nine Mile	Novi Rd.	Plaisance	1	1,122	23-24
11	68	23	P	south	Grand River	Funeral Home	Meadowbrook	1	457	
12	58a	21	S	east	Beck	Ashley	Cider Mill	1	1,228	
12	58b	21	S	east	Beck	Cider Mill	Sierra	1	2,553	
14	84a	25	S	east	Meadowbrook	Ten Mile	Chattman	1	2,323	23-24
15	18b	11	S	north	Twelve Mile	Novi Rd.	Twelve Oaks	1	2,027	
15	84b	25	S	east	Meadowbrook	Nine Mile	Chattman	1	2,380	23-24
17	82b	25	S	west	Haggerty	Pavilion Ct Apartments	Nine Mile	1	539	
18	153	36	S	east	Haggerty	City limits	Taco Bell	1	501	
19	72	23	P	north	Grand River	Town Center	Amstaff building	1	677	
19	121a	36	P	south	Nine Mile	Meadowbrook	Sunrise	1	2,899	
21	64	22	S	east	Taft	Ten Mile	Eleven Mile	2	4,218	23-24
22	21a	13	P	south	Twelve Mile	Meadowbrook	Energy Way	2	3,451	

Legend S= 6 ft. sidewalk P= 8 ft. pathway

- Segments with pathways or sidewalks on most of the opposite side of the street - *note that these segments may be critical for system connectivity & must be analyzed separately for connectivity*
- Segments which involve a highway crossing or a railroad crossing
- Short Segments
- CIP Budget Year
- Segments included in last years Top 20
- Deferred

TABLE 4.5: Proposed Adjacent to Major Roads Pathway and Sidewalk Segments: Tier 1 Category Rankings

All proposed adjacent to road pathway & sidewalk segments are reviewed against a set of Tier 1 criteria & assigned points based on the segment's potential service benefits to the citizens of the City, the segments are ranked by the Tier 1 points & the segments receiving the top 20 points are assigned Tier 2 points

TIER 1 CATEGORIES

OVERALL SEGMENT RANK	Segment Item #	SECTION #	S= 6 ft. sidewalk P= 8 ft. pathway	Side of Street	Location	From	To	of Pieces in Segment	Segment Length (ft.)	Notes	BICYCLE & PEDESTRIAN ACCIDENTS (intersection accidents only included when sidewalk or pathway connection is missing (1/98 to 9/14)	TRAFFIC SAFETY (ADT) 2010 Non-Motorized MP & Traffic Speed	ACCESS TO SCHOOLS (# elem & intermediate schools within 1 mile); (# middle & high schools within 2 miles); (# private schools over 100 students within 2 miles)	ACCESS TO PARKS (# within 1 mile)	ACCESS TO HOTELS (# hotels within 1 mile)	ACCESS TO SHOPPING (# shopping areas within 1 mile)	ACCESS TO PLACES OF WORSHIP (# places of worship within 1 mile)	CONNECTED TO NEIGHBORING SIDEWALK/ REGIONAL TRAIL SYSTEM	POPULATION SERVED	SEGMENT COMPLETION	CONSIDERABLE PUBLIC INTEREST	NON-MOTORIZED MASTER PLAN	TOTAL TIER 1 POINTS	TIER 1 RANKING																
																									points available per category															
																									Short Segments (400 ft. or less)	CIP Budget Year	5 points = 1 accident 10 = 2 accidents 15 = 3 accidents 20 = 4 or more accidents	0 = <10K ADTs, 5 = 10K-20K ADTs 10 = >20K ADTs Then multiplied by 1.2 for 35-40mph & 1.5 for >=45 mph	4.5 = 1 school 9 = 2+ schools	4 = 1 park 8 = 2+ parks	3.5 = 1 hotel 7 = 2+ hotels	3.5 = 1 shopping area 7 = 2+ shopping areas	3.5 = 1 places of worship 7 = 2+ places of worship	3.5 = connected to neighboring sidewalk system 7 = connected to regional trail system	0 = low density 8 = medium density 16 = high density	3.5 = 1/2 to 1 mile 7 = over 1 mile	5 = top 15 survey responses, resident petitions & documented segments requested by groups & govt agencies	20 = initial investment 15 = major corridor		
1	80b	24	S	north	Ten Mile	Meadowbrook	Willowbrook Estates	1	198		10	7.5	9	6	0	7	4	0	14	15	5	20	97.5	1																
2	81a	25	P	south	Ten Mile	Meadowbrook	Willowbrook	1	2,529		20	7.5	9	0	0	7	4	0	14	5	5	20	91.5	2																
3	18a	11	S	north	Twelve Mile	Twelve Oaks	Meadowbrook	2	2,613		10	7.5	9	12	4	7	2	14	7	15	0	0	87.5	3																
4	81b	25	P	south	Ten Mile	Willowbrook	Haggerty	3	2,634		20	7.5	4.5	0	0	7	4	0	14	5	5	20	87	4																
5	90	26	P	south	Ten Mile	Maly Dental	Novi Ridge Apartments	1	2,122	23-24	5	7.5	0	6	0	7	4	0	14	15	5	20	83.5	5																
6	38	16	S	east	Beck	Grand River	Eleven Mile	1	2,234	23-24	15	15	9	6	2	3.5	0	14	7	10	0	0	81.5	6																
7	99a	29	P	south	Ten Mile	Wixom	400' E of Lynwood	2	2,739	23-24	5	7.5	0	0	0	3.5	4	14	7	15	5	20	81	7																
8	93b	27	S	north	Nine Mile	Plaisance	Taft	2	619	23-24	10	0	4.5	6	0	3.5	0	0	14	15	5	20	78	8																
9	66	23	P	south	Grand River	Sixth Gate	Main Street	2	293	20-21	15	7.5	9	6	4	7	0	0	14	15	0	0	77.5	9																
10	93a	27	S	north	Nine Mile	Novi Rd.	Plaisance	1	1,122	23-24	10	0	0	6	0	7	0	0	14	15	5	20	77	10																
11	68	23	P	south	Grand River	Funeral Home	Meadowbrook	1	457		10	7.5	4.5	0	2	7	2	14	14	15	0	0	76	11																
12	58a	21	S	east	Beck	Ashley	Cider Mill	1	1,228		0	7.5	9	6	0	3.5	0	14	14	15	5	0	74	12																
12	58b	21	S	east	Beck	Cider Mill	Sierra	1	2,553		0	7.5	9	6	0	3.5	0	14	14	15	5	0	74	12																
14	84a	25	S	east	Meadowbrook	Ten Mile	Chattman	1	2,323	23-24	0	6	9	0	0	7	4	0	14	5	5	20	70	14																
15	18b	11	S	north	Twelve Mile	Novi Rd.	Twelve Oaks	1	2,027		10	7.5	4.5	12	4	7	2	0	7	15	0	0	69	15																

Legend S= 6 ft. sidewalk P= 8 ft. pathway

- Segments with pathways or sidewalks on most of the opposite side of the street - note that these segments may be critical for system connectivity & must be analyzed separately for connectivity
- Segments with a higher ranking segment planned for the opposite side of the street - note that these segments may be critical for system connectivity & must be analyzed separately for connectivity
- Short Segments (400 ft. or less)
- CIP Budget Year
- Deferred until construction

TABLE 4.5: Proposed Adjacent to Major Roads Pathway and Sidewalk Segments: Tier 1 Category Rankings

All proposed adjacent to road pathway & sidewalk segments are reviewed against a set of Tier 1 criteria & assigned points based on the segment's potential service benefits to the citizens of the City, the segments are ranked by the Tier 1 points & the segments receiving the top 20 points are assigned Tier 2 points

TIER 1 CATEGORIES																																									
OVERALL SEGMENT RANK	Segment Item #	Section #	S= 6 ft. sidewalk P= 8 ft. pathway	Side of Street	Location	From	To	of Pieces in Segment	Segment Length (ft.)	Notes	BICYCLE & PEDESTRIAN ACCIDENTS (intersection accidents only included when sidewalk or pathway connection is missing (1/98 to 9/14)	TRAFFIC SAFETY (ADT) 2010 Non-Motorized MP & Traffic Speed	ACCESS TO SCHOOLS (# elem & intermediate schools within 1 mile); (# middle & high schools within 2 miles); (# private schools over 100 students within 2 miles)	ACCESS TO PARKS (# within 1 mile)	ACCESS TO HOTELS (# hotels within 1 mile)	ACCESS TO SHOPPING (# shopping areas within 1 mile)	ACCESS TO PLACES OF WORSHIP (# places of worship within 1 mile)	CONNECTED TO NEIGHBORING SIDEWALK/ REGIONAL TRAIL SYSTEM	POPULATION SERVED	SEGMENT COMPLETION	CONSIDERABLE PUBLIC INTEREST	NON-MOTORIZED MASTER PLAN	TOTAL TIER 1 POINTS	TIER 1 RANKING																	
																									points available per category																
																									Short Segments (400 ft or less)	CIP Budget Year	5 points = 1 accident 10 = 2 accidents 15 = 3 accidents 20 = 4 or more accidents	0 = <10K ADTs*, 5 = 10K-20K ADTs 10 = >20K ADTs Then multiplied by 1<35mph, 1.2 for 35-40mph & 1.5 for >=45 mph	4.5 = 1 school 9 = 2+ schools	4 = 1 park 8 = 2+ parks	3.5 = 1 hotel 7 = 2+ hotels	3.5 = 1 shopping area 7 = 2+ shopping areas	3.5 = 1 places of worship 7 = 2+ places of worship	3.5 = connecte d to neighboring sidewalk system 7 = connecte d to regional trail system	0 = low density 8 = medium density 16 = high density	3.5 = 1/2 to 1 mile 7 = over 1 mile	5 = top 15 survey responses , resident petitions & documente d segments requeste d by groups & govt agencies	20 = initial investme nt 15 = major corridor			
15	84b	25	S	east	Meadowbrook	Nine Mile	Chattman	1	2,380	23-24	0	5	9	0	0	7	4	0	14	5	5	20	69	15																	
17	82b	25	S	west	Haggerty	Pavilion Ct Apartments	Nine Mile	1	539		10	15	0	0	4	0	4	0	14	15	5	0	67	17																	
18	153	36	S	east	Haggerty	City limits	Taco Bell	1	501		10	15	0	0	0	3.5	0	14	14	10	0	0	66.5	18																	
19	72	23	P	north	Grand River	Town Center	Amstaff building	1	677		10	7.5	0	6	4	7	0	0	14	15	0	0	63.5	19																	
19	121a	36	P	south	Nine Mile	Meadowbrook	Sunrise	1	2,899		5	0	4.5	6	0	0	4	0	14	5	5	20	63.5	19																	
21	64	22	S	east	Taft	Ten Mile	Eleven Mile	2	4,218	23-24	5	0	9	12	2	0	4	0	14	10	5	0	61	21																	
22	21a	13	P	south	Twelve Mile	Meadowbrook	Energy Way	2	3,451		15	7.5	9	6	2	0	2	7	7	5	0	0	60.5	22																	
22	97b	29	P	west	Beck	Cheltenham	Iriquois	1	1,059		15	7.5	4.5	0	0	3.5	4	14	7	5	0	0	60.5	22																	
24	168	14	P	east	Novi Rd.	across 96		1	1,957		0	15	0	0	4	7	0	0	14	15	5	0	60	24																	
24	119a	36	S	east	Meadowbrook	Nine Mile	Singh Blvd	1	1,075	21-22	5	0	0	12	0	0	4	0	14	0	5	20	60	24																	
24	119c	36	S	east	Meadowbrook	Eight Mile	N of Llewelyn	1	1,191		5	0	0	0	2	0	4	0	14	10	5	20	60	24																	
27	6a	4	P	west	West Park	Pontiac Trail	45182 West Park Dr	1	418		20	0	4.5	0	0	3.5	2	0	14	10	5	0	59	27																	
27	6b	4	P	west	West Park	45182 West Park Dr	Bristol Corners	1	1,780		20	0	4.5	0	0	3.5	2	0	14	10	5	0	59	27																	
29	52a	20	P	south	Eleven Mile	Wixom	E side ITC Corridor	2	2,566		0	0	9	6	2	3.5	2	14	7	10	5	0	58.5	29																	
29	79a	24	S	east	Meadowbrook	Ten Mile	Clermont Ave	1	526		10	6	4.5	0	0	7	4	0	7	15	5	0	58.5	29																	
29	79b	24	S	east	Meadowbrook	Clermont Avenue	Scarborough Lane	1	661		10	6	4.5	0	0	7	4	0	7	15	5	0	58.5	29																	

Legend S= 6 ft. sidewalk P= 8 ft. pathway

- Segments with pathways or sidewalks on most of the opposite side of the street - note that these segments may be critical for system connectivity & must be analyzed separately for connectivity
- Segments with a higher ranking segment planned for the opposite side of the street - note that these segments may be critical for system connectivity & must be analyzed separately for connectivity
- Short Segments (400 ft. or less)
- CIP Budget Year
- Deferred until construction

TABLE 4.5: Proposed Adjacent to Major Roads Pathway and Sidewalk Segments: Tier 1 Category Rankings

All proposed adjacent to road pathway & sidewalk segments are reviewed against a set of Tier 1 criteria & assigned points based on the segment's potential service benefits to the citizens of the City, the segments are ranked by the Tier 1 points & the segments receiving the top 20 points are assigned Tier 2 points

TIER 1 CATEGORIES

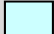


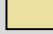

OVERALL SEGMENT RANK	Segment Item #	Section #	S= 6 ft. sidewalk P= 8 ft. pathway	Side of Street	Location	From	To	Segment Length (ft.)	Notes	BICYCLE & PEDESTRIAN ACCIDENTS (intersection accidents only included when sidewalk or pathway connection is missing (1/98 to 9/14)	TRAFFIC SAFETY (ADT) 2010 Non-Motorized MP & Traffic Speed	ACCESS TO SCHOOLS (# elem & intermediate schools within 1 mile); (# middle & high schools within 2 miles); (# private schools over 100 students within 2 miles)	ACCESS TO PARKS (# within 1 mile)	ACCESS TO HOTELS (# hotels within 1 mile)	ACCESS TO SHOPPING (# shopping areas within 1 mile)	ACCESS TO PLACES OF WORSHIP (# places of worship within 1 mile)	CONNECTED TO NEIGHBORING SIDEWALK/ REGIONAL TRAIL SYSTEM	POPULATION SERVED	SEGMENT COMPLETION	CONSIDERABLE PUBLIC INTEREST	NON-MOTORIZED MASTER PLAN	TOTAL TIER 1 POINTS	TIER 1 RANKING																			
																								of Pieces in Segment	Short Segments (400 ft or less)	CIP Budget Year	points available per category															
																											5 points = 1 accident 10 = 2 accidents 15 = 3 accidents 20 = 4 or more accidents	0 = <10K ADTs*, 5 = 10K-20K ADTs 10 = >20K ADTs Then multiplied by 1<35mph, 1.2 for 35-40mph & 1.5 for >=45 mph	4.5 = 1 school 9 = 2+ schools	4 = 1 park 8 = 2+ parks	3.5 = 1 hotel 7 = 2+ hotels	3.5 = 1 shopping area 7 = 2+ shopping areas	3.5 = 1 places of worship 7 = 2+ places of worship	3.5 = connecte d to neighboring sidewalk system 7 = connecte d to regional trail system	0 = low density 8 = medium density 16 = high density	3.5 = 1/2 to 1 mile 7 = over 1 mile	5 = top 15 survey responses , resident petitions & documente d segments requeste d by groups & govt agencies	20 = initial investme nt 15 = major corridor				
				Segments with pathways or sidewalks on most of the opposite side of the street - note that these segments may be critical for system connectivity & must be analyzed separately for connectivity																																						
				Segments which would require construction of a highway crossing or railroad crossing for completion																																						
Legend S= 6 ft. sidewalk P= 8 ft. pathway  Segments with pathways or sidewalks on most of the opposite side of the street - note that these segments may be critical for system connectivity & must be analyzed separately for connectivity  Segments with a higher ranking segment planned for the opposite side of the street - note that these segments may be critical for system connectivity & must be analyzed separately for connectivity  Short Segments (400 ft. or less)  CIP Budget Year  Deferred until construction																																										
29	79c	24	S	east	Meadowbrook	Scarborough Lane	Grand River	872		10	6	4.5	0	0	7	4	0	7	15	5	0	58.5	29																			
33	44	18	P	east	Napier	Knights Bridge	Island Lake	1,262		10	0	0	6	0	0	0	0	7	15	0	20	58	33																			
34	121b	36	P	south	Nine Mile	Sunrise	Haggerty	1,248		5	0	4.5	0	0	0	4	0	14	5	5	20	57.5	34																			
35	32a	15	S	west	Novi Rd.	Twelve Mile	West Oaks	1,347		15	15	0	6	4	7	0	0	0	5	5	0	57	35																			
35	52b	20	P	south	Eleven Mile	Oberlin	Bosco	1,641		0	0	9	12	0	0	0	14	7	10	5	0	57	35																			
35	88	26	S	north	Nine Mile	RR crossing	Shiro	1,165	23-24	10	0	0	12	0	7	4	0	14	10	0	0	57	35																			
38	33	15	S	west	Novi Rd.	I-96	Crescent	840		0	15	4.5	6	4	7	0	0	0	15	5	0	56.5	38																			
39	41	17	S	east	Wixom	Target	Deerfield Elementary	1,516		0	5	9	12	2	3.5	0	0	3.5	15	5	0	55	39																			
40	30a	14	P	west	Meadowbrook	26901 Meadowbrook Rd	41500 Gardenbrook Rd(I-	1,203		5	6	9	6	4	7	0	7	0	10	0	0	54	40																			
40	32b	15	S	west	Novi Rd.	I-96 north side	I-96 south side	723		15	7.5	4.5	6	4	7	0	0	0	5	5	0	54	40																			
40	115	34	S	west	Novi Rd.	Timber Ridge development	City Limits	1,591		5	7.5	4.5	6	0	7	0	0	14	10	0	0	54	40																			
43	25a	13	S	west	Haggerty	Twelve Mile	Novi Research Park	1,019		0	7.5	4.5	0	2	0	0	0	14	5	0	20	53	43																			
43	25b	13	S	west	Haggerty	Novi Research Park	section line	3,167		0	7.5	4.5	0	2	0	0	0	14	5	0	20	53	43																			
43	119b	36	S	east	Meadowbrook	Singh Blvd	N of Llewelyn	1,438		5	0	0	0	0	0	4	0	14	5	5	20	53	43																			
46	150	17	S	north	Grand River	Sams Way	Providence	681		0	7.5	0	6	2	7	0	0	0	15	0	15	52.5	46																			
47	169a	16	P	south	Twelve Mile	46675 Twelve Mile Rd	I-96	2,357		5	15	0	0	0	7	0	0	0	5	5	15	52	47																			

TABLE 4.5: Proposed Adjacent to Major Roads Pathway and Sidewalk Segments: Tier 1 Category Rankings

All proposed adjacent to road pathway & sidewalk segments are reviewed against a set of Tier 1 criteria & assigned points based on the segment's potential service benefits to the citizens of the City, the segments are ranked by the Tier 1 points & the segments receiving the top 20 points are assigned Tier 2 points

TIER 1 CATEGORIES																																									
OVERALL SEGMENT RANK	Segment Item #	Section #	S= 6 ft. sidewalk P= 8 ft. pathway	Side of Street	Location	From	To	of Pieces in Segment	Segment Length (ft.)	Notes	BICYCLE & PEDESTRIAN ACCIDENTS (intersection accidents only included when sidewalk or pathway connection is missing (1/98 to 9/14)	TRAFFIC SAFETY (ADT) 2010 Non-Motorized MP & Traffic Speed	ACCESS TO SCHOOLS (# elem & intermediate schools within 1 mile); (# middle & high schools within 2 miles); (# private schools over 100 students within 2 miles)	ACCESS TO PARKS (# within 1 mile)	ACCESS TO HOTELS (# hotels within 1 mile)	ACCESS TO SHOPPING (# shopping areas within 1 mile)	ACCESS TO PLACES OF WORSHIP (# places of worship within 1 mile)	CONNECTED TO NEIGHBORING SIDEWALK/ REGIONAL TRAIL SYSTEM	POPULATION SERVED	SEGMENT COMPLETION	CONSIDERABLE PUBLIC INTEREST	NON-MOTORIZED MASTER PLAN	TOTAL TIER 1 POINTS	TIER 1 RANKING																	
																									points available per category																
																									Short Segments (400 ft or less)	CIP Budget Year	5 points = 1 accident 10 = 2 accidents 15 = 3 accidents 20 = 4 or more accidents	0 = <10K ADTs*, 5 = 10K-20K ADTs 10 = >20K ADTs Then multiplied by 1<35mph, 1.2 for 35-40mph & 1.5 for >=45 mph	4.5 = 1 school 9 = 2+ schools	4 = 1 park 8 = 2+ parks	3.5 = 1 hotel 7 = 2+ hotels	3.5 = 1 shopping area 7 = 2+ shopping areas	3.5 = 1 places of worship 7 = 2+ places of worship	3.5 = connected to neighboring sidewalk system 7 = connected to regional trail system	0 = low density 8 = medium density 16 = high density	3.5 = 1/2 to 1 mile 7 = over 1 mile	5 = top 15 survey responses, resident petitions & documented segments requested by groups & govt agencies	20 = initial investment 15 = major corridor			
Legend				S= 6 ft. sidewalk P= 8 ft. pathway																																					
				Segments with pathways or sidewalks on most of the opposite side of the street - note that these segments may be critical for system connectivity & must be analyzed separately for connectivity																																					
				Segments with a higher ranking segment planned for the opposite side of the street - note that these segments may be critical for system connectivity & must be analyzed separately for connectivity																																					
				Short Segments (400 ft. or less) CIP Budget Year Deferred until construction																																					
47	169b	16	P	west	Beck/I-96	I-96 ROW		2	1,189		5	15	0	0	0	7	0	0	0	0	5	5	15	52	47																
47	52c	20	P	south	Eleven Mile	Beck	Entrance to Bosco Park	1	716		0	0	9	12	0	0	0	14	7	5	5	0	52	47																	
50	51	20	S	north	Ten Mile	Dinser	Woodham	1	1,799	23-24	0	7.5	0	6	0	0	2	14	7	10	5	0	51.5	50																	
51	40	17	P	south	Grand River	Providence Hospital	Wixom	3	843		5	7.5	4.5	12	2	0	0	0	0	15	5	0	51	51																	
52	19a	12	S	north	Twelve Mile	27925 Summit Dr	40020 Twelve Mile Rd	1	2,519		5	7.5	9	6	2	0	2	14	0	5	0	0	50.5	52																	
52	19b	12	S	north	Twelve Mile	ITC Corridor		1	100		5	7.5	9	6	2	0	2	14	0	5	0	0	50.5	52																	
54	30b	14	P	west	Meadowbrook	27551 Meadowbrook Rd	27421 Meadowbrook Rd	2	910		5	6	9	6	0	7	0	7	0	10	0	0	50	54																	
54	75	24	P	north	Grand River	Seeley	Meadowbrook	1	1,038		10	7.5	4.5	0	2	7	2	0	7	10	0	0	50	54																	
54	173	36	S	west	Haggerty	Eight Mile	Big Boy Restaurant	1	349		0	0	13.5	0	4	3.5	0	14	0	15	0	0	50	54																	
57	21b	13	P	south	Twelve Mile	Energy Way	Haggerty	1	335		15	7.5	9	6	2	0	2	0	7	0	0	0	48.5	57																	
57	31a	15	S	south	Twelve Mile	Cabaret Dr	Hino Motors (railroad crossing)	1	2,035		15	7.5	0	0	4	7	0	0	10	5	0	0	48.5	57																	
57	87	26	S	north	Nine Mile	Meadowbrook	Venture	1	2,128		0	0	4.5	6	0	7	2	0	14	10	5	0	48.5	57																	
57	112	33	S	east	Beck	Nine Mile	City Limits	2	1,114		10	15	4.5	0	0	0	0	0	14	5	0	0	48.5	57																	
61	37b	16	S	north	Eleven Mile	Mandalay Cir E	Taft	1	496		0	0	9	6	2	0	4	0	7	15	5	0	48	61																	
62	97a	29	P	west	Beck	Nine Mile	Cheltenham	1	858		15	7.5	4.5	0	0	3.5	4	0	7	5	0	0	46.5	62																	
62	98a	29	S	north	Nine Mile	Kensington	Vasilios Court	1	2,589		0	0	4.5	6	0	0	0	14	7	10	5	0	46.5	62																	

TABLE 4.5: Proposed Adjacent to Major Roads Pathway and Sidewalk Segments: Tier 1 Category Rankings

All proposed adjacent to road pathway & sidewalk segments are reviewed against a set of Tier 1 criteria & assigned points based on the segment's potential service benefits to the citizens of the City, the segments are ranked by the Tier 1 points & the segments receiving the top 20 points are assigned Tier 2 points

TIER 1 CATEGORIES																																								
OVERALL SEGMENT RANK	Segment Item #	Section #	S= 6 ft. sidewalk P= 8 ft. pathway	Side of Street	Location	From	To	of Pieces in Segment	Segment Length (ft.)	Notes	BICYCLE & PEDESTRIAN ACCIDENTS (intersection accidents only included when sidewalk or pathway connection is missing (1/98 to 9/14)	TRAFFIC SAFETY (ADT) 2010 Non-Motorized MP & Traffic Speed	ACCESS TO SCHOOLS (# elem & intermediate schools within 1 mile); (# middle & high schools within 2 miles); (# private schools over 100 students within 2 miles)	ACCESS TO PARKS (# within 1 mile)	ACCESS TO HOTELS (# hotels within 1 mile)	ACCESS TO SHOPPING (# shopping areas within 1 mile)	ACCESS TO PLACES OF WORSHIP (# places of worship within 1 mile)	CONNECTED TO NEIGHBORING SIDEWALK/ REGIONAL TRAIL SYSTEM	POPULATION SERVED	SEGMENT COMPLETION	CONSIDERABLE PUBLIC INTEREST	NON-MOTORIZED MASTER PLAN	TOTAL TIER 1 POINTS	TIER 1 RANKING																
																									points available per category															
																									Short Segments (400 ft or less)	CIP Budget Year	5 points = 1 accident 10 = 2 accidents 15 = 3 accidents 20 = 4 or more accidents	0 = <10K ADTs*, 5 = 10K-20K ADTs 10 = >20K ADTs Then multiplied by 1<35mph, 1.2 for 35-40mph & 1.5 for >=45 mph	4.5 = 1 school 9 = 2+ schools	4 = 1 park 8 = 2+ parks	3.5 = 1 hotel 7 = 2+ hotels	3.5 = 1 shopping area 7 = 2+ shopping areas	3.5 = 1 places of worship 7 = 2+ places of worship	3.5 = connecte d to neighboring sidewalk system 7 = connecte d to regional trail system	0 = low density 8 = medium density 16 = high density	3.5 = 1/2 to 1 mile 7 = over 1 mile	5 = top 15 survey responses , resident petitions & documente d segments requeste d by groups & govt agencies	20 = initial investme nt 15 = major corridor		
Legend S= 6 ft. sidewalk P= 8 ft. pathway Segments with pathways or sidewalks on most of the opposite side of the street - note that these segments may be critical for system connectivity & must be analyzed separately for connectivity Segments with a higher ranking segment planned for the opposite side of the street - note that these segments may be critical for system connectivity & must be analyzed separately for connectivity Short Segments (400 ft. or less) CIP Budget Year Deferred until construction																																								
62	98b	29	S	north	Nine Mile	Vasilios Court	ITC Pathway	2	2,167		0	0	4.5	6	0	0	0	14	7	10	5	0	46.5	62																
65	35	15	S	east	Taft	Eleven Mile	Grand River	2	1,648		0	0	9	0	4	7	4	0	7	10	5	0	46	65																
66	17	11	S	east	Old Novi	Linhart Avenue	Thirteen Mile	1	1,611		5	0	4.5	12	2	0	0	0	7	15	0	0	45.5	66																
67	60	22	P	south	Eleven Mile	Clark	Creek Crossing	1	244		0	0	9	0	0	7	4	0	14	5	5	0	44	67																
67	78a	24	P	south	Grand River	Meadowbrook	Joseph	1	1,967		10	7.5	4.5	6	2	7	0	0	7	0	0	0	44	67																
69	31b	16	S	south	Twelve Mile	Hino Motors	West Park Drive	1	1,449		15	7.5	0	0	4	7	0	0	0	5	5	0	43.5	69																
70	37a	16	S	north	Eleven Mile	Beck	Mandalay Cir E	4	2,392		0	0	9	6	0	0	4	7	7	5	5	0	43	70																
71	28	14	P	east	Novi Rd.	south Twelve Oaks entrance	North Twelve Oaks entrance	2	988		0	7.5	9	0	4	7	0	0	0	10	5	0	42.5	71																
72	102b	30	S	north	Nine Mile	E of Evergreen Ct	Garfield	3	816		0	0	0	12	0	0	0	14	0	15	0	0	41	72																
73	116b	34	P	south	Nine Mile	Center	Taft	1	2,682		5	0	4.5	0	0	7	0	0	14	5	5	0	40.5	73																
74	162a	3	S	north	South Lake	West Park	E of Lilley Trail	1	2,000		0	0	0	12	0	3.5	0	0	14	10	0	0	39.5	74																
74	111a	32	P	south	Nine Mile	Beck	Garfield Conservation area	1	2,654		5	0	4.5	6	0	0	0	14	0	5	5	0	39.5	74																
74	111b	32	P	west	Nine Mile	Garfield Conservation area	Vasilios Court	1	1,224		5	0	4.5	6	0	0	0	14	0	5	5	0	39.5	74																
74	111c	32	P	south	Nine Mile	Vasilios Court	ITC Pathway	1	1,709		5	0	4.5	6	0	0	0	14	0	5	5	0	39.5	74																
78	3a	1	S	north	Thirteen Mile	Haggerty Rd.	39550 Thirteen Mile Rd	1	278		0	0	4.5	0	0	0	2	0	7	10	0	15	38.5	78																
78	3b	1	S	north	Thirteen Mile	Cabot Drive	M-s (crossing)	1	1,512		0	0	4.5	0	0	0	2	0	7	10	0	15	38.5	78																

TABLE 4.5: Proposed Adjacent to Major Roads Pathway and Sidewalk Segments: Tier 1 Category Rankings

All proposed adjacent to road pathway & sidewalk segments are reviewed against a set of Tier 1 criteria & assigned points based on the segment's potential service benefits to the citizens of the City, the segments are ranked by the Tier 1 points & the segments receiving the top 20 points are assigned Tier 2 points

TIER 1 CATEGORIES																																									
OVERALL SEGMENT RANK	Segment Item #	Section #	S= 6 ft. sidewalk P= 8 ft. pathway	Side of Street	Location	From	To	of Pieces in Segment	Segment Length (ft.)	Notes	BICYCLE & PEDESTRIAN ACCIDENTS (intersection accidents only included when sidewalk or pathway connection is missing (1/98 to 9/14)	TRAFFIC SAFETY (ADT) 2010 Non-Motorized MP & Traffic Speed	ACCESS TO SCHOOLS (# elem & intermediate schools within 1 mile); (# middle & high schools within 2 miles); (# private schools over 100 students within 2 miles)	ACCESS TO PARKS (# within 1 mile)	ACCESS TO HOTELS (# hotels within 1 mile)	ACCESS TO SHOPPING (# shopping areas within 1 mile)	ACCESS TO PLACES OF WORSHIP (# places of worship within 1 mile)	CONNECTED TO NEIGHBORING SIDEWALK/ REGIONAL TRAIL SYSTEM	POPULATION SERVED	SEGMENT COMPLETION	CONSIDERABLE PUBLIC INTEREST	NON-MOTORIZED MASTER PLAN	TOTAL TIER 1 POINTS	TIER 1 RANKING																	
																									points available per category																
																									Short Segments (400 ft or less)	CIP Budget Year	5 points = 1 accident 10 = 2 accidents 15 = 3 accidents 20 = 4 or more accidents	0 = <10K ADTs*, 5 = 10K-20K ADTs 10 = >20K ADTs Then multiplied by 1<35mph, 1.2 for 35-40mph & 1.5 for >=45 mph	4.5 = 1 school 9 = 2+ schools	4 = 1 park 8 = 2+ parks	3.5 = 1 hotel 7 = 2+ hotels	3.5 = 1 shopping area 7 = 2+ shopping areas	3.5 = 1 places of worship 7 = 2+ places of worship	3.5 = connecte d to neighboring sidewalk system 7 = connecte d to regional trail system	0 = low density 8 = medium density 16 = high density	3.5 = 1/2 to 1 mile 7 = over 1 mile	5 = top 15 survey responses , resident petitions & documente d segments requeste d by groups & govt agencies	20 = initial investme nt 15 = major corridor			
Legend S= 6 ft. sidewalk P= 8 ft. pathway Segments with pathways or sidewalks on most of the opposite side of the street - <i>note that these segments may be critical for system connectivity & must be analyzed separately for connectivity</i> Segments with a higher ranking segment planned for the opposite side of the street - <i>note that these segments may be critical for system connectivity & must be analyzed separately for connectivity</i> Short Segments (400 ft. or less) CIP Budget Year Deferred until construction																																									
80	101b	30	P	east	Napier	Links of Novi	Nine Mile	1	4,127		0	0	0	12	0	0	2	14	0	10	0	0	38	80																	
80	171	35	P	south	Eight Mile	Griswold	City Limits	1	1,439		0	15	9	0	0	7	0	0	7	0	0	0	38	80																	
80	174	35	P	south	Griswold	Eight Mile	City Limits	1	143		0	15	9	0	0	7	0	0	7	0	0	0	38	80																	
80	175	35	P	south	Eight Mile	Griswold	City Limits	1	228		0	15	9	0	0	7	0	0	7	0	0	0	38	80																	
84	149	15	P	east	Clark	Eleven Mile	Grand River	1	601		0	0	9	0	0	7	4	0	7	10	0	0	37	84																	
85	77b	24		west	Haggerty	Grand River	Regency Lot 7	1	499		5	7.5	0	0	0	7	0	0	7	10	0	0	36.5	85																	
86	14a	10	S	north	Twelve Mile	Carlton Forest	BP	1	997		5	0	0	0	4	7	0	0	0	15	5	0	36	86																	
86	78b	24	P	south	Grand River	Joseph	Bashian	1	290		10	7.5	4.5	0	0	7	0	0	7	0	0	0	36	86																	
86	78c	24	P	south	Grand River	Olde Orchard	Karim	1	279		10	7.5	4.5	0	0	7	0	0	7	0	0	0	36	86																	
86	78d	24	P	south	Grand River	Karim	Haggerty	1	383		10	7.5	4.5	0	0	7	0	0	7	0	0	0	36	86																	
86	116a	34	P	south	Nine Mile	Chelsea	Center	1	2,183		5	0	0	0	0	7	0	0	14	5	5	0	36	86																	
91	11	9	S	north	Twelve Mile	Novi Concrete	West Park	1	1,334		0	7.5	0	0	2	0	0	0	0	5	5	15	34.5	91																	
91	12b	9	S	north	Twelve Mile	Liberty Park	Liberty Park	1	349		10	7.5	0	0	2	0	0	0	10	5	0	0	34.5	91																	
91	104	31	P	east	Napier	Eight Mile	Community Sports Park	1	2,552		0	0	0	12	0	3.5	0	14	0	5	0	0	34.5	91																	
91	110a	32	P	west	Beck	Eight Mile	Casa Loma	1	1,473		10	15	4.5	0	0	0	0	0	0	5	0	0	34.5	91																	
95	110b	32	P	west	Beck	Casa Loma	Nine Mile	2	1,257		10	15	9	0	0	0	0	0	0	0	0	0	34	95																	

TABLE 4.5: Proposed Adjacent to Major Roads Pathway and Sidewalk Segments: Tier 1 Category Rankings

All proposed adjacent to road pathway & sidewalk segments are reviewed against a set of Tier 1 criteria & assigned points based on the segment's potential service benefits to the citizens of the City, the segments are ranked by the Tier 1 points & the segments receiving the top 20 points are assigned Tier 2 points

TIER 1 CATEGORIES																																								
OVERALL SEGMENT RANK	Segment Item #	Section #	S= 6 ft. sidewalk P= 8 ft. pathway	Side of Street	Location	From	To	of Pieces in Segment	Segment Length (ft.)	Notes	BICYCLE & PEDESTRIAN ACCIDENTS (intersection accidents only included when sidewalk or pathway connection is missing (1/98 to 9/14)	TRAFFIC SAFETY (ADT) 2010 Non-Motorized MP & Traffic Speed	ACCESS TO SCHOOLS (# elem & intermediate schools within 1 mile); (# middle & high schools within 2 miles); (# private schools over 100 students within 2 miles)	ACCESS TO PARKS (# within 1 mile)	ACCESS TO HOTELS (# hotels within 1 mile)	ACCESS TO SHOPPING (# shopping areas within 1 mile)	ACCESS TO PLACES OF WORSHIP (# places of worship within 1 mile)	CONNECTED TO NEIGHBORING SIDEWALK/ REGIONAL TRAIL SYSTEM	POPULATION SERVED	SEGMENT COMPLETION	CONSIDERABLE PUBLIC INTEREST	NON-MOTORIZED MASTER PLAN	TOTAL TIER 1 POINTS	TIER 1 RANKING																
																									points available per category															
																									Short Segments (400 ft or less)	CIP Budget Year	5 points = 1 accident 10 = 2 accidents 15 = 3 accidents 20 = 4 or more accidents	0 = <10K ADTs*, 5 = 10K-20K ADTs 10 = >20K ADTs Then multiplied by 1<35mph, 1.2 for 35-40mph & 1.5 for >=45 mph	4.5 = 1 school 9 = 2+ schools	4 = 1 park 8 = 2+ parks	3.5 = 1 hotel 7 = 2+ hotels	3.5 = 1 shopping area 7 = 2+ shopping areas	3.5 = 1 places of worship 7 = 2+ places of worship	3.5 = connecte d to neighboring sidewalk system 7 = connecte d to regional trail system	0 = low density 8 = medium density 16 = high density	3.5 = 1/2 to 1 mile 7 = over 1 mile	5 = top 15 survey responses , resident petitions & documente d segments requeste d by groups & govt agencies	20 = initial investme nt 15 = major corridor		
Legend				S= 6 ft. sidewalk P= 8 ft. pathway																																				
				Segments with pathways or sidewalks on most of the opposite side of the street - note that these segments may be critical for system connectivity & must be analyzed separately for connectivity																																				
				Segments with a higher ranking segment planned for the opposite side of the street - note that these segments may be critical for system connectivity & must be analyzed separately for connectivity																																				
				Short Segments (400 ft. or less) CIP Budget Year Deferred until construction																																				
96	113a	33	P	south	Nine Mile	Beck	Barclay	1	641		5	0	4.5	0	0	0	0	0	14	5	5	0	33.5	96																
96	113b	33	P	south	Nine Mile	Galway	Anna Maria	1	1,537		5	0	4.5	0	0	0	0	0	14	5	5	0	33.5	96																
98	114b	34	S	east	Taft	Nine Mile	Byrne	1	1,423		0	0	9	0	0	0	0	0	14	10	0	0	33	98																
99	159	19	S	north	Ten Mile	Oak Point Church	Oak Point Church	1	301		0	7.5	4.5	0	0	0	2	0	3.5	15	0	0	32.5	99																
100	1a	1	S	south	Fourteen Mile	Haggerty Rd.	M-5	1	1,659		0	7.5	0	0	0	0	2	0	7	10	5	0	31.5	100																
100	1c	1	S	north	Fourteen Mile	Berkshire	M-5 (crossing)	1	347		0	7.5	0	0	0	0	2	0	7	10	5	0	31.5	100																
100	49	19	S	north	Ten Mile	Wixom	Island Lake	1	203		0	7.5	0	0	0	0	2	0	7	15	0	0	31.5	100																
103	26	13	S	north	Eleven Mile	Campus Tech	Seeley	1	966		0	0	4.5	0	2	3.5	0	7	14	0	0	0	31	103																
103	101a	30	P	east	Napier	Ten Mile	Links of Novi	1	1,015		0	0	0	12	0	0	0	14	0	5	0	0	31	103																
103	102a	30	S	north	Nine Mile	Napier	W of Evergreen Ct	2	3,012		0	0	0	12	0	0	0	14	0	5	0	0	31	103																
106	163	3	P	north	South Lake	Lakeshore Park	Landings Park	1	1,180		0	0	4.5	12	0	0	0	0	14	0	0	0	30.5	106																
106	164	3	P	south	South Lake	Lakeshore Park	Elm	1	720		0	0	4.5	12	0	0	0	0	14	0	0	0	30.5	106																
106	74	24	S	east	Seeley	Eleven Mile	Grand River	1	2,655		0	0	4.5	0	0	7	0	0	14	5	0	0	30.5	106																
109	106b	31	P	west	Garfield	Deer Run	Nine Mile	1	2,659		5	0	0	6	0	0	0	14	0	5	0	0	30	109																
110	12a	9	S	north	Twelve Mile	West Park (railroad)	Liberty Park	1	1,838		0	7.5	0	0	2	0	0	0	0	15	5	0	29.5	110																
111	34	15	S	north	Eleven Mile	Clark	Taft	2	2,770		0	0	9	0	2	7	4	0	7	0	0	0	29	111																

TABLE 4.5: Proposed Adjacent to Major Roads Pathway and Sidewalk Segments: Tier 1 Category Rankings

All proposed adjacent to road pathway & sidewalk segments are reviewed against a set of Tier 1 criteria & assigned points based on the segment's potential service benefits to the citizens of the City, the segments are ranked by the Tier 1 points & the segments receiving the top 20 points are assigned Tier 2 points

TIER 1 CATEGORIES

OVERALL SEGMENT RANK	Segment Item #	Section #	S= 6 ft. sidewalk P= 8 ft. pathway	Side of Street	Location	From	To	of Pieces in Segment	Segment Length (ft.)	Notes	BICYCLE & PEDESTRIAN ACCIDENTS (intersection accidents only included when sidewalk or pathway connection is missing (1/98 to 9/14)	TRAFFIC SAFETY (ADT) 2010 Non-Motorized MP & Traffic Speed	ACCESS TO SCHOOLS (# elem & intermediate schools within 1 mile); (# middle & high schools within 2 miles); (# private schools over 100 students within 2 miles)	ACCESS TO PARKS (# within 1 mile)	ACCESS TO HOTELS (# hotels within 1 mile)	ACCESS TO SHOPPING (# shopping areas within 1 mile)	ACCESS TO PLACES OF WORSHIP (# places of worship within 1 mile)	CONNECTED TO NEIGHBORING SIDEWALK/ REGIONAL TRAIL SYSTEM	POPULATION SERVED	SEGMENT COMPLETION	CONSIDERABLE PUBLIC INTEREST	NON-MOTORIZED MASTER PLAN	TOTAL TIER 1 POINTS	TIER 1 RANKING																	
																									points available per category																
																									Short Segments (400 ft or less)	CIP Budget Year	5 points = 1 accident 10 = 2 accidents 15 = 3 accidents 20 = 4 or more accidents	0 = <10K ADTs, 5 = 10K-20K ADTs 10 = >20K ADTs Then multiplied by 1<35mph, 1.2 for 35-40mph & 1.5 for >=45 mph	4.5 = 1 school 9 = 2+ schools	4 = 1 park 8 = 2+ parks	3.5 = 1 hotel 7 = 2+ hotels	3.5 = 1 shopping area 7 = 2+ shopping areas	3.5 = 1 places of worship 7 = 2+ places of worship	3.5 = connecte d to neighboring sidewalk system 7 = connecte d to regional trail system	0 = low density 8 = medium density 16 = high density	3.5 = 1/2 to 1 mile 7 = over 1 mile	5 = top 15 survey responses, resident petitions & documented segments requested by groups & govt agencies	20 = initial investme nt 15 = major corridor			
				Segments with pathways or sidewalks on most of the opposite side of the street - note that these segments may be critical for system connectivity & must be analyzed separately for connectivity																																					
				Segments which would require construction of a highway crossing or railroad crossing for completion																																					
Legend S= 6 ft. sidewalk P= 8 ft. pathway Segments with pathways or sidewalks on most of the opposite side of the street - note that these segments may be critical for system connectivity & must be analyzed separately for connectivity Segments with a higher ranking segment planned for the opposite side of the street - note that these segments may be critical for system connectivity & must be analyzed separately for connectivity Short Segments (400 ft. or less) CIP Budget Year Deferred until construction																																									
112	113c	33	P	south	Nine Mile	Anna Maria	Taft	1	410		5	0	4.5	0	0	0	0	0	14	0	5	0	28.5	112																	
113	77a	24	S	west	Haggerty	Regency Lot 7	Section Line	1	1,037		5	7.5	0	0	0	7	0	0	7	0	0	0	26.5	113																	
114	20b	12	S	west	Haggerty	29199 Haggerty Rd	29199 Haggerty Rd	4	188		0	0	6.75	6	0	3.5	0	0	0	5	5	0	26.3	114																	
115	165	3	P	south	South Lake	Henning	Lakeshore Park	1	2,160		0	0	0	12	0	0	0	0	14	0	0	0	26	115																	
115	162b	3	S	north	South Lake	E of Lilley Trail	Lakeshore Park	1	3,182		0	0	0	12	0	0	0	0	14	0	0	0	26	115																	
115	107	31	P	south	Nine Mile	Garfield	Hillside	3	4,157		0	0	0	12	0	0	0	14	0	0	0	0	26	115																	
118	8	4	P	west	West Park	Bristol Corners	West	2	1,648		0	0	0	6	0	0	0	0	14	5	0	0	25	118																	
119	114a	34	S	east	Taft	Byrne	City Limits	1	1,113		0	0	9	0	0	0	0	0	14	0	0	0	23	119																	
120	14b	10	S	north	Twelve Mile	Stoneridge	end of adjacent parcel	1	329		5	0	0	0	4	7	0	0	0	5	0	0	21	120																	
120	155	30	P	south	Ten Mile	Links of Novi		1	1,693		0	7.5	0	6	0	0	4	0	3.5	0	0	0	21	120																	
120	172	35	P	west	Griswold	Eight Mile	City Limits	1	727		5	0	9	0	0	0	0	0	7	0	0	0	21	120																	
123	2a	1	S	west	Haggerty	Berkshire	39500 Mackenzie Dr	1	1,518		0	7.5	0	0	0	0	0	0	7	5	0	0	19.5	123																	
123	2b	1	S	west	Haggerty	Thirteen Mile	39525 McKenzie Drive	1	424		0	7.5	0	0	0	0	0	0	7	5	0	0	19.5	123																	
123	2c	1	S	west	Haggerty	Speedway	50-22-01-200-039	1	215		0	7.5	0	0	0	0	0	0	7	5	0	0	19.5	123																	
123	158	30	P	east	Napier	Links of Novi		1	1,321		0	0	0	12	0	0	4	0	3.5	0	0	0	19.5	123																	
127	20a	12	S	west	Haggerty	39600 Lewis Dr	Twelve Mile		1,795		0	7.5	4.5	0	2	0	0	0	0	5	0	0	19	127																	

TABLE 4.5: Proposed Adjacent to Major Roads Pathway and Sidewalk Segments: Tier 1 Category Rankings

All proposed adjacent to road pathway & sidewalk segments are reviewed against a set of Tier 1 criteria & assigned points based on the segment's potential service benefits to the citizens of the City, the segments are ranked by the Tier 1 points & the segments receiving the top 20 points are assigned Tier 2 points

TIER 1 CATEGORIES

OVERALL SEGMENT RANK	Segment Item #	Section #	S= 6 ft. sidewalk P= 8 ft. pathway	Side of Street	Location	From	To	of Pieces in Segment	Segment Length (ft.)	Notes	BICYCLE & PEDESTRIAN ACCIDENTS (intersection accidents only included when sidewalk or pathway connection is missing (1/98 to 9/14)	TRAFFIC SAFETY (ADT) 2010 Non-Motorized MP & Traffic Speed	ACCESS TO SCHOOLS (# elem & intermediate schools within 1 mile); (# middle & high schools within 2 miles); (# private schools over 100 students within 2 miles)	ACCESS TO PARKS (# within 1 mile)	ACCESS TO HOTELS (# hotels within 1 mile)	ACCESS TO SHOPPING (# shopping areas within 1 mile)	ACCESS TO PLACES OF WORSHIP (# places of worship within 1 mile)	CONNECTED TO NEIGHBORING SIDEWALK/ REGIONAL TRAIL SYSTEM	POPULATION SERVED	SEGMENT COMPLETION	CONSIDERABLE PUBLIC INTEREST	NON-MOTORIZED MASTER PLAN	TOTAL TIER 1 POINTS	TIER 1 RANKING																
																									points available per category															
																									Short Segments (400 ft or less)	CIP Budget Year	5 points = 1 accident 10 = 2 accidents 15 = 3 accidents 20 = 4 or more accidents	0 = <10K ADTs, 5 = 10K-20K ADTs 10 = >20K ADTs Then multiplied by 1<35mph, 1.2 for 35-40mph & 1.5 for >=45 mph	4.5 = 1 school 9 = 2+ schools	4 = 1 park 8 = 2+ parks	3.5 = 1 hotel 7 = 2+ hotels	3.5 = 1 shopping area 7 = 2+ shopping areas	3.5 = 1 places of worship 7 = 2+ places of worship	3.5 = connecte d to neighboring sidewalk system 7 = connecte d to regional trail system	0 = low density 8 = medium density 16 = high density	3.5 = 1/2 to 1 mile 7 = over 1 mile	5 = top 15 survey responses , resident petitions & documente d segments requeste d by groups & govt agencies	20 = initial investme nt 15 = major corridor		
Legend				S= 6 ft. sidewalk P= 8 ft. pathway																																				
				Segments with pathways or sidewalks on most of the opposite side of the street - note that these segments may be critical for system connectivity & must be analyzed separately for connectivity																																				
				Segments with a higher ranking segment planned for the opposite side of the street - note that these segments may be critical for system connectivity & must be analyzed separately for connectivity																																				
				Short Segments (400 ft. or less) CIP Budget Year Deferred until construction																																				
128	108a	32	S	east	Garfield	Eight Mile	Chianti	1	1,941		5	0	0	6	0	0	0	7	0	0	0	0	18	128																
128	108b	32	S	east	Garfield	Chianti	Nine Mile	1	3,558		5	0	0	6	0	0	0	7	0	0	0	0	18	128																
130	106a	31	P	west	Garfield	Eight Mile	Deer Run	1	3,006		5	0	0	6	0	0	0	0	0	5	0	0	16	130																
131	167	9	P	south	West	West Park	City Limits	1	1,312		0	0	0	6	0	3.5	0	0	0	5	0	0	14.5	131																
132	156	30	P	south	Ten Mile	50577 Ten Mile Road	50155 Ten Mile Road	1	1,007		0	7.5	0	0	0	0	2	0	3.5	0	0	0	13	132																
132	157	30	P	south	Ten Mile	50155 Ten Mile Road	200' west of Wixom	1	1,709		0	7.5	0	0	0	0	2	0	3.5	0	0	0	13	132																
134	100a	30	P	south	Ten Mile	Wixom	Fire Station 4 Parkland	4	143		0	7.5	0	0	0	0	2	0	0	0	0	0	9.5	134																
134	100b	30	P	south	Ten Mile	50155 Ten Mile Road		1	148		0	7.5	0	0	0	0	2	0	0	0	0	0	9.5	134																
134	100b	30	P	south	Ten Mile	50155 Ten Mile Road		1	148		0	7.5	0	0	0	0	2	0	0	0	0	0	9.5	134																
134	100c	30	P	south	Ten Mile	50577 Ten Mile Road		1	148		0	7.5	0	0	0	0	2	0	0	0	0	0	9.5	134																
134	100d	30	P	south	Ten Mile	51395 Ten Mile Road	Napier	1	147		0	7.5	0	0	0	0	2	0	0	0	0	0	9.5	134																
138	166	4	P	north	West	Hudson	City Limits	1	354		0	0	0	6	0	0	0	0	0	0	0	0	6	138																
138	170	4	S	north	West	West Park	American Interiors	1	389		0	0	0	6	0	0	0	0	0	0	0	0	6	138																
Total Length in feet for all missing segments in the City as of 2019									189,312																															

TABLE 4.6 Proposed Adjacent to Major Roads Pathway and Sidewalk Segments: Tier 2 Category Rankings

Top 20 Tier 1 segments are reviewed against a set of Tier 2 criteria & assigned points based on financial considerations to give priority to segments that provide more economical value

OVERALL SEGMENT RANK	Segment Item #	Section #	S= 6 ft. sidewalk P= 8 ft. pathway	Side of Street	Location	From	To	# of Pieces in Segment	Segment Length (ft.)	Notes	TIER 2 CATEGORIES Criteria Points (only top 20 Tier 1 segments receive tier 2 points)						TOTALS				
											EASE OF CONSTRUCTION (easy/hard)	RIGHT-OF-WAY AVAILABILITY (based on % available)	OTHER FUNDING SOURCES (based on % available)	OPPOSITE SIDE SIDEWALK OR PATHWAY (road < 12,000 ADT & 35 mph < existing or planned with higher priority ranking)	PRIVATE DEVELOPMENT POTENTIAL	EVIDENCE OF EXTENSIVE PEDESTRIAN USE 0 = No Evidence; 10 = Worn Path	TOTAL TIER 1 POINTS	TIER 1 RANKING	TOTAL TIER 2 POINTS	TOTAL POINTS	TOTAL POINTS (OVERALL) RANK FOR TOP 20
					Segments with pathways or sidewalks on most of the opposite side of the street - note that these segments may be critical for system connectivity & must be analyzed separately for connectivity						0 = hard 8 = medium 16 = hard easy	0 = 0% 4.5 = 25% 9 = 50% 13.5 = 75% 18 = 100%	0 = 0% 4.5 = 25% 9 = 50% 18 = 80%+	-20 = complete section link -10 = one direction section link	8 = little potential 4 = partial potential within 10 years 2 = dev potential within 10 years 0= SP submitted	0 = No Evidence 10 = Worn Path					
					Segments with a higher ranking segment planned for the opposite side of the street - note that these segments may be critical for system connectivity & must be analyzed separately for connectivity																
1	80b	24	S	north	Ten Mile	Meadowbrook	Willowbrook Estates	1	198								29.5	127	1	8	13.5
2	81a	25	P	south	Ten Mile	Meadowbrook	Willowbrook	1	2,529								19.5	111	2	8	13.5
3	18a	11	S	north	Twelve Mile	Twelve Oaks	Meadowbrook	2	2,613								9.5	97	6	8	13.5
4	81b	25	P	south	Ten Mile	Willowbrook	Haggerty	3	2,634								19.5	106.5	3	8	13.5
5	90	26	P	south	Ten Mile	Maly Dental	Novi Ridge Apartments	1	2,122	23-24							-7.5	76	15	0	4.5
6	38	16	S	east	Beck	Grand River	Eleven Mile	1	2,234	23-24							19	100.5	4	0	0
7	99a	29	P	south	Ten Mile	Wixom	400' E of	2	2,739	23-24							10.5	91.5	9	8	4.5
8	93b	27	S	north	Nine Mile	Plaisance	Taft	2	619	23-24							18.5	96.5	7	0	4.5
9	66	23	P	south	Grand River	Sixth Gate	Main Street	2	293	20-21							20	97.5	5	16	0
10	93a	27	S	north	Nine Mile	Novi Rd.	Plaisance	1	1,122	23-24							8	85	12	0	0
11	68	23	P	south	Grand River	Funeral Home	Meadowbrook	1	457								9.5	85.5	11	16	13.5
12	58a	21	S	east	Beck	Ashley	Cider Mill	1	1,228								-10	64	20	0	0
13	58b	21	S	east	Beck	Cider Mill	Sierra	1	2,553								-1	73	16	0	0
14	84a	25	S	east	Meadowbrook	Ten Mile	Chattman	1	2,323	23-24							14	84	13	8	18
15	18b	11	S	north	Twelve Mile	Novi Rd.	Twelve Oaks	1	2,027								-3	66	19	8	0
16	84b	25	S	east	Meadowbrook	Nine Mile	Chattman	1	2,380	23-24							14	83	14	8	18
17	82b	25	S	west	Haggerty	Pavilion Ct Apartments	Nine Mile	1	539								2	69	18	0	0
18	153	36	S	east	Haggerty	City limits	Taco Bell	1	501								29.5	96	8	8	13.5
19	72	23	P	north	Grand River	Town Center	Amstaff building	1	677								7	70.5	17	16	4.5
20	121a	36	P	south	Nine Mile	Meadowbrook	Sunrise	1	2,899								-9	54.5	22	0	0
21	64	22	S	east	Taft	Ten Mile	Eleven Mile	2	4,218	23-24							0.5	61.5	21	8	4.5
	21a	13	P	south	Twelve Mile	Meadowbrook	Energy Way	2	3,451								31	91.5	22	0	18
Total Length in feet									31,887												

City of Novi
Pedestrian and Bicycle Accidents

July 1, 2018 and June 30, 2019

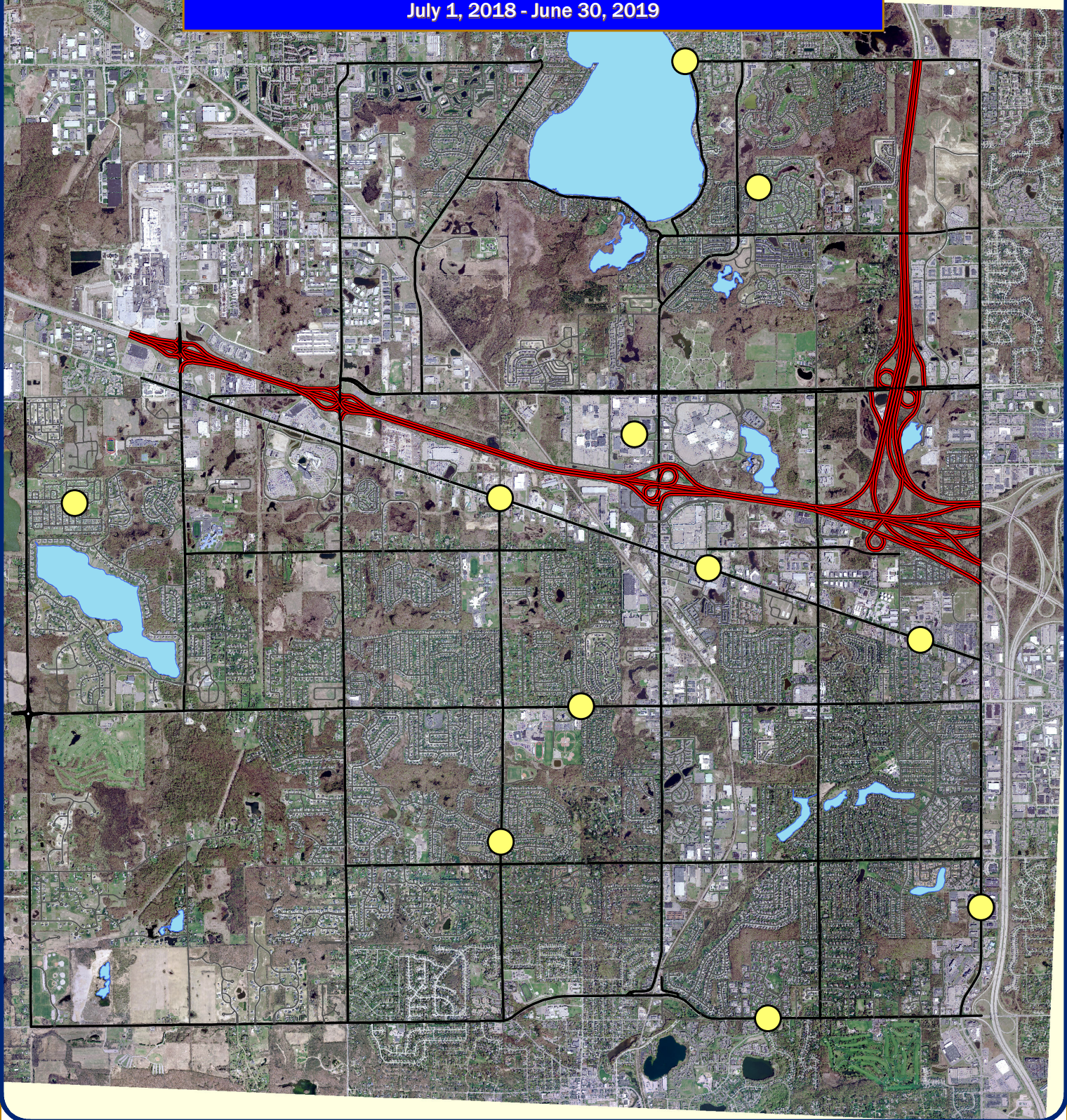
(Source: Kevin Gilmore, Detective Sergeant, City of Novi Police Department)

Between July 1, 2018 and June 30, 2019, the Novi Police Department responded to 11 accidents that involved a pedestrian or bicycle. All 11 involved caused an injury, but none resulted in a fatality.

Incident Number	Pedestrian or Bicycle Involved	Date	Time	Location
180037768	Bicycle	7/2/2018	14:28	W Glen Haven & Eight Mile
180040068	Pedestrian	7/13/2018	10:37	Fourteen Mile & East Lake
180051626	Pedestrian	9/11/2018	21:08	Dunbarton & Taft
180054141	Bicycle	9/26/2018	21:07	30164 Montmorency Dr
180058040	Bicycle	10/19/2018	12:50	Grand River & Taft
180063289	Pedestrian	11/15/2018	21:12	63289 West Oaks
180070370	Pedestrian	12/20/2018	21:35	Ten Mile & Christina
180072254	Pedestrian	12/31/2018	15:48	40000 Highpointe Blvd & Haggerty
190013776	Pedestrian	3/9/2019	21:11	Grand River & Town Center
190019518	Bicycle	4/9/2019	15:50	Montana & Indiana
190025019	Pedestrian	5/6/2019	19:30	Grand River & Olde Orchard

Pedestrian or Bicycle Related Accidents in Novi

July 1, 2018 - June 30, 2019



Map Author: Yuliya Harris
 Date: 07/05/2019
 Project: Accident Map
 Version #: 1

Amended By:
 Date:
 Department:

MAP INTERPRETATION NOTICE
 Map information depicted is not intended to replace or substitute for any official or primary source. This map was intended to meet National Map Accuracy Standards and use the most recent, accurate sources available to the people of the City of Novi. Boundary measurements and area calculations are approximate and should not be construed as survey measurements performed by a licensed Michigan Surveyor as defined in Michigan Public Act 132 of 1970 as amended. Please contact the City GIS Manager to confirm source and accuracy information related to this map.

Map Legend

Pedestrian or Bicycle Related Accident



City of Novi
 Police Department
 45145 Ten Mile Road
 Novi, MI 48375
cityofnovi.org

